

Converting Colors

Android(4293499050)

Have a look what the booklet for
Android(4293499050) contains.

Android(4293499050)	3
<i>Conversions</i>	4
<i>Details</i>	6
<i>Harmonies</i>	11
<i>Previews</i>	23
<i>Color Blindness Simulation</i>	26
<i>CSS Examples</i>	29

Color

Android(4293499050)

Conversions

Conversions Part 1

Format	Color
Hex	E998AA
RGB	233, 152, 170
RGB Percent	91%, 60%, 67%
CMY	0.0863, 0.4039, 0.3333
CMYK	0.00, 0.35, 0.27, 0.09
HSL	347°, 65%, 75%
HSV	347°, 35%, 91%
XYZ	52.0882, 42.6824, 43.5234
YIQ	178.2710, 42.4980, 22.7700

Conversions

Conversions Part 2

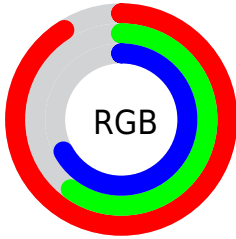
Format	Color
R_{YB}	233, 152, 170
Decimal	15308970
CIE _{Lab}	71.34, 32.71, 3.26
CIE _{LCh}	71, 32.871, 5.686
Yxy	42.6824, 0.3766, 0.3086
Android (android.graphics.Color)	4293499050 (0xFFE998AA)
YUV	178.2710, -4.0776, 47.9973
Hunter-Lab	65.3318, 27.9853, 6.2338

Details

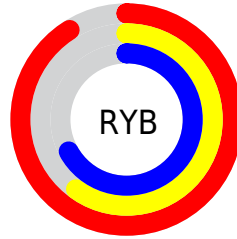
The Android color `4293499050` is a light color, and the websafe version is hex `FF9999`. A complement of this color would be `4288211415`, and the grayscale version is `4289901234`.

A 20% lighter version of the original color is `4294954977`, and `4289750134` is the 20% darker color. If you saturate the color by 10%, you get `4293493144`, and if you desaturate by 10%, it is `4293504956`.

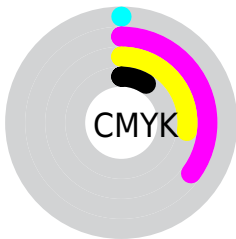
Distribution



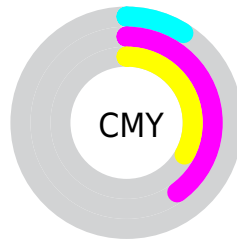
- Red (91%)
- Green (60%)
- Blue (67%)



- Red (91%)
- Yellow (60%)
- Blue (67%)



- Cyan (0%)
- Magenta (35%)
- Yellow (27%)
- Black (9%)



- Cyan (9%)
- Magenta (40%)
- Yellow (33%)

Brightness & Saturation Gradients

These gradients show how the Android color 4293499050 changes by changing the brightness by 10 percent. The first figure shows a shift by +10% for each color and the second figure -10%.

Similar to the brightness gradients but the following saturation gradients show a change of the Android color 4293499050 by changing the saturation by 10% instead.

 4293499050

 4293499050

4294967295

 4291591824

 4294954977

 4289750134

 4294962430

 4287908701

 4286132806

 4284357168

 4282646555

 4281270273

 4278190080

 4293499050

 4293499050

 4293493144

 4293504956

 4293486982

 4293511118

 4293481076

 4293517024

 4293475170

 4293522930

 4293469263

 4293525503

 4293463101

 4293460020

Harmonies

Analogous

The Analogous color harmony consists of three colors that are next to each other on the color wheel.



4292517064



4293499050



4293434509

Triad

The Triadic color harmony groups three colors that are evenly spaced from another and form a triangle on the color wheel.



4293499050



4288526205



4284659941

Complementary

The Complementary color scheme is a pair of colors which are on the opposite of each other on the color wheel.



4293499050



4288211415

Split Complementary

Split-complementary colors differ from the complementary color scheme. The scheme consists of three colors, the original color and two neighbors of the complement color.



4283023057



4293499050



4286234005

Square

The Square scheme is like the rectangle color scheme, but the four colors are evenly spaced on the color wheel.



4293499050



4290686835



4284006324



4287607018

Rectangle

The Rectangle color scheme consists of four colors that form a rectangle on the color wheel.



4293499050



4292845950



4284006324



4283874271

Sweetspot

The Sweet Spot groups the original color and five complimentary colors.



4293499050



4294960875



4292253929



4286607476



4278190080



4286611584

Same Dimension

The Same Dimension uses a secret algorithm to generate beautiful new colors.



4293499050



4294939820



4293504664



4285885036



4290052136



4281729036

Inverse Universe

The Inverse Universe completely reimagines the original color for something new.



4293499050



4294939820



4288205801



4285885036



4290052136



4281729036

Previews

White Background



This preview shows how the Android color 4293499050 looks on a white background.

Color Contrast Check

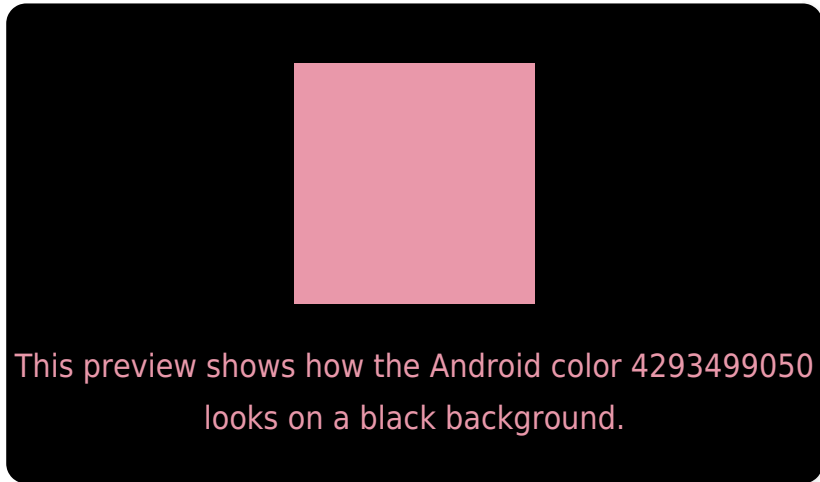
Large Text (above 18pt) WCAG AA × Fail

Any Text WCAG AA × Fail

Large Text (above 18pt) WCAG AAA × Fail

Any Text WCAG AAA × Fail

Black Background



Color Contrast Check

Large Text (above 18pt) WCAG AA ✓ Pass

Any Text WCAG AA ✓ Pass

Large Text (above 18pt) WCAG AAA ✓ Pass

Any Text WCAG AAA ✓ Pass

If you want to check with other color combinations, try the [Color Contrast Checker](#).

Android 4293499050 Background



This preview shows how black text looks on a background with the Android color 4293499050.



This preview shows how white text looks on a background with the Android color 4293499050.

Color Blindness Simulation

Color vision deficiency is a very complex topic, and I could not describe the different causes any better than Wikipedia does, so if you want to learn more, you should check out their [article about color blindness](#).

Dichromacy

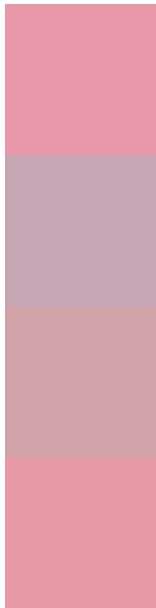


Original Color
4293499050

Protanopia
4289769143

Deuteranopia
4291013031

Trichromacy



Original Color
4293499050

Protanomaly
4291143346

Deuteranomaly
4291929000

Tritanomaly
4293433766

Monochromacy



Original Color
4293499050

Achromatopsia
4289901234

Achromatomaly
4291209647

CSS Examples

Text

The CSS property to change the color of the text to Android 4293499050 is called "color". The color property can be set on classes, ids or directly on the HTML element.

This example shows how text in the color `rgb(233, 152, 170)` looks like.

```
.text, #text, p{  
    color:rgb(233, 152, 170)  
}
```

If you want to add a text shadow in that color use the text-shadow property, you can generate a text shadow directly with our [CSS Text Shadow Generator](#).

Here you see how black text with a 4 pixel rgb(233, 152, 170) colored shadow looks like.

```
.shadow{ text-shadow: 4px 4px 2px rgb(233, 152, 170) }
```

Border

The CSS property to change the border of an element to Android 4293499050 is called "border". The border property can be set on classes, ids or directly on the HTML element.

This example shows the color as border, it can be applied via the CSS property "border" or "border-color".

```
.border, #border, table{ border:4px solid rgb(233, 152, 170) }
```

If only the border color should be changed use the property `border-color`.

```
.border{ border-color:rgb(233, 152, 170) }
```

If you want to add a box shadow in that color use:

Here you see how a box with a 4 pixel `rgb(233, 152, 170)` colored shadow looks like.

```
.boxshadow{ -moz-box-shadow:4px 4px 4px  
4px rgb(233, 152, 170); -webkit-box-  
shadow:4px 4px 4px 4px rgb(233, 152, 170);  
box-shadow:4px 4px 4px 4px rgb(233, 152,  
170) }
```

Background

The CSS property to change the background color of an element to Android 4293499050 is called "background". The background property can be set on classes, ids or directly on the HTML element.

```
.background, #background, body{  
background: rgb(233, 152, 170) }
```

If only the background color should be changed can be used:

```
.background{ background-color: rgb(233,  
152, 170) }
```

This example shows the color as background, it is applied via the CSS property "background".

To optimize and compress your CSS code, you can use our [online CSS compressor and optimizer](#) based on csstidy. If you want to create a linear or radial gradient as background or border, check our [CSS Gradient Generator](#).

Hey! You found this booklet interesting? Support Converting Colors with the new Membership Option!

The pro membership hides all ads, plus gives you double the colors in the color bucket, and more awesome pro features!

[Learn more, Memberships starting at \\$2.50/m!](#)

**Follow me
on Twitter!**

@ConvertingColor