

Converting Colors

Android(4293514464)

Have a look what the booklet for
Android(4293514464) contains.

Android(4293514464)	3
<i>Conversions</i>	4
<i>Details</i>	6
<i>Harmonies</i>	11
<i>Previews</i>	23
<i>Color Blindness Simulation</i>	26
<i>CSS Examples</i>	29

Color

Android(4293514464)

Conversions

Conversions Part 1

Format	Color
Hex	E9D4E0
RGB	233, 212, 224
RGB Percent	91%, 83%, 88%
CMY	0.0863, 0.1686, 0.1216
CMYK	0.00, 0.09, 0.04, 0.09
HSL	326°, 32%, 87%
HSV	326°, 9%, 91%
XYZ	70.6023, 69.7924, 80.2712
YIQ	219.6470, 8.6640, 8.1840

Conversions

Conversions Part 2

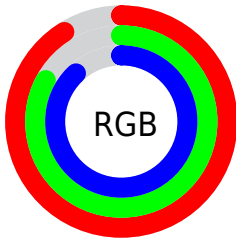
Format	Color
R_{YB}	233, 212, 224
Decimal	15324384
CIE Lab	86.89, 9.31, -3.27
CIE LCh	87, 9.869, 340.655
Yxy	69.7924, 0.3200, 0.3163
Android (android.graphics.Color)	4293514464 (0xFFE9D4E0)
YUV	219.6470, 2.1460, 11.7106
Hunter-Lab	83.5419, 4.6544, 1.5105

Details

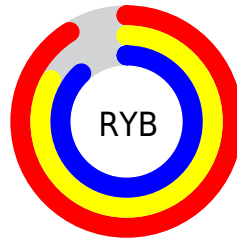
The Android color `4293514464` is a light color, and the websafe version is hex `CCCCCC`. A complement of this color would be `4292143581`, and the grayscale version is `4292664540`.

A 20% lighter version of the original color is `4294967295`, and `4289830313` is the 20% darker color. If you saturate the color by 10%, you get `4293508566`, and if you desaturate by 10%, it is `4293520362`.

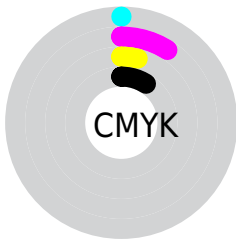
Distribution



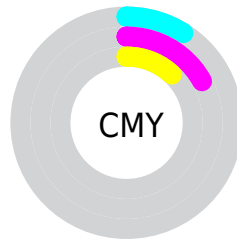
- Red (91%)
- Green (83%)
- Blue (88%)



- Red (91%)
- Yellow (83%)
- Blue (88%)



- Cyan (0%)
- Magenta (9%)
- Yellow (4%)
- Black (9%)



- Cyan (9%)
- Magenta (17%)
- Yellow (12%)

Brightness & Saturation Gradients

These gradients show how the Android color 4293514464 changes by changing the brightness by 10 percent. The first figure shows a shift by +10% for each color and the second figure -10%.

Similar to the brightness gradients but the following saturation gradients show a change of the Android color 4293514464 by changing the saturation by 10% instead.

 4293514464

 4293514464

4294967295

 4291672260

 4289830313

 4288119694

 4286409333

 4284764764

 4283185989

 4281673006

 4280226074

 4278190080

 4293514464

 4293514464

 4293508566

 4293520362

 4293502412

 4293525492

 4293496514

 4293525502

 4293490616

 4293525503

 4293484718

 4293478564

 4293472666

 4293466768

 4293460614

Harmonies

Analogous

The Analogous color harmony consists of three colors that are next to each other on the color wheel.



4292925160



4293514464



4293841878

Triad

The Triadic color harmony groups three colors that are evenly spaced from another and form a triangle on the color wheel.



4293514464



4292795079



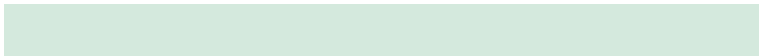
4291026661

Complementary

The Complementary color scheme is a pair of colors which are on the opposite of each other on the color wheel.



4293514464



4292143581

Split Complementary

Split-complementary colors differ from the complementary color scheme. The scheme consists of three colors, the original color and two neighbors of the complement color.



4291026909



4293514464



4292074955

Square

The Square scheme is like the rectangle color scheme, but the four colors are evenly spaced on the color wheel.



4293514464



4293384136



4291420115



4291484907

Rectangle

The Rectangle color scheme consists of four colors that form a rectangle on the color wheel.



4293514464



4293842128



4291420115



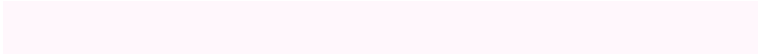
4291026915

Sweetspot

The Sweet Spot groups the original color and five complimentary colors.



4293514464



4294965244



4292728041



4286610045



4278190080



4286611584

Same Dimension

The Same Dimension uses a secret algorithm to generate beautiful new colors.



4293514464



4294960115



4293514454



4285885040



4290052199



4281729055

Inverse Universe

The Inverse Universe completely reimagines the original color for something new.



4293514464



4294960115



4292143591



4285885040



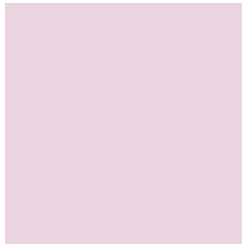
4290052199



4281729055

Previews

White Background



This preview shows how the Android color 4293514464 looks on a white background.

Color Contrast Check

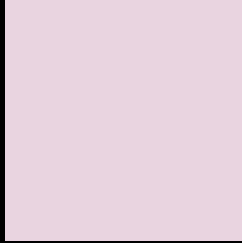
Large Text (above 18pt) WCAG AA × Fail

Any Text WCAG AA × Fail

Large Text (above 18pt) WCAG AAA × Fail

Any Text WCAG AAA × Fail

Black Background



This preview shows how the Android color 4293514464 looks on a black background.

Color Contrast Check

Large Text (above 18pt) WCAG AA ✓ Pass

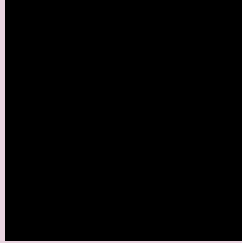
Any Text WCAG AA ✓ Pass

Large Text (above 18pt) WCAG AAA ✓ Pass

Any Text WCAG AAA ✓ Pass

If you want to check with other color combinations, try the [Color Contrast Checker](#).

Android 4293514464 Background



This preview shows how black text looks on a background with the Android color 4293514464.



This preview shows how white text looks on a background with the Android color 4293514464.

Color Blindness Simulation

Color vision deficiency is a very complex topic, and I could not describe the different causes any better than Wikipedia does, so if you want to learn more, you should check out their [article about color blindness](#).

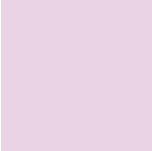
Dichromacy



Original Color
4293514464

Protanopia
4292597987

Deuteranopia
4293710816



Tritanopia
4293579748

Trichromacy



Original Color

4293514464

Protanomaly

4292925410

Deuteranomaly

4293645280

Tritanomaly

4293579747

Monochromacy



Original Color

4293514464

Achromatopsia

4292664540

Achromatomaly

4292991453

CSS Examples

Text

The CSS property to change the color of the text to Android 4293514464 is called "color". The color property can be set on classes, ids or directly on the HTML element.

This example shows how text in the color `rgb(233, 212, 224)` looks like.

```
.text, #text, p{  
    color:rgb(233, 212, 224)  
}
```

If you want to add a text shadow in that color use the text-shadow property, you can generate a text shadow directly with our [CSS Text Shadow Generator](#).

Here you see how black text with a 4 pixel rgb(233, 212, 224) colored shadow looks like.

```
.shadow{ text-shadow: 4px 4px 2px rgb(233, 212, 224) }
```

Border

The CSS property to change the border of an element to Android 4293514464 is called "border". The border property can be set on classes, ids or directly on the HTML element.

This example shows the color as border, it can be applied via the CSS property "border" or "border-color".

```
.border, #border, table{ border:4px solid rgb(233, 212, 224) }
```

If only the border color should be changed use the property `border-color`.

```
.border{ border-color:rgb(233, 212, 224) }
```

If you want to add a box shadow in that color use:

Here you see how a box with a 4 pixel `rgb(233, 212, 224)` colored shadow looks like.

```
.boxshadow{ -moz-box-shadow:4px 4px 4px  
4px rgb(233, 212, 224); -webkit-box-  
shadow:4px 4px 4px 4px rgb(233, 212, 224);  
box-shadow:4px 4px 4px 4px rgb(233, 212,  
224) }
```

Background

The CSS property to change the background color of an element to Android 4293514464 is called "background". The background property can be set on classes, ids or directly on the HTML element.

```
.background, #background, body{  
background: rgb(233, 212, 224) }
```

If only the background color should be changed can be used:

```
.background{ background-color: rgb(233,  
212, 224) }
```

This example shows the color as background, it is applied via the CSS property "background".

To optimize and compress your CSS code, you can use our [online CSS compressor and optimizer](#) based on csstidy. If you want to create a linear or radial gradient as background or border, check our [CSS Gradient Generator](#).

Hey! You found this booklet interesting? Support Converting Colors with the new Membership Option!

The pro membership hides all ads, plus gives you double the colors in the color bucket, and more awesome pro features!

[Learn more, Memberships starting at \\$2.50/m!](#)

**Follow me
on Twitter!**

@ConvertingColor