

Converting Colors

Android(4293543284)

Have a look what the booklet for
Android(4293543284) contains.

Android(4293543284)	3
<i>Conversions</i>	4
<i>Details</i>	6
<i>Harmonies</i>	11
<i>Previews</i>	23
<i>Color Blindness Simulation</i>	26
<i>CSS Examples</i>	29

Color

Android(4293543284)

Conversions

Conversions Part 1

Format	Color
Hex	EA4574
RGB	234, 69, 116
RGB Percent	92%, 27%, 45%
CMY	0.0824, 0.7294, 0.5451
CMYK	0.00, 0.71, 0.50, 0.08
HSL	343°, 80%, 59%
HSV	343°, 71%, 92%
XYZ	39.2122, 23.0096, 18.8976
YIQ	123.6930, 83.2530, 49.5970

Conversions

Conversions Part 2

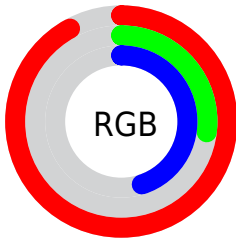
Format	Color
R_{YB}	234, 69, 116
Decimal	15353204
CIE Lab	55.08, 65.83, 10.99
CIE LCh	55, 66.741, 9.482
Yxy	23.0096, 0.4834, 0.2837
Android (android.graphics.Color)	4293543284 (0xFFEA4574)
YUV	123.6930, -3.7926, 96.7392
Hunter-Lab	47.9683, 61.9720, 10.2200

Details

The Android color **4293543284** is a dark color, and the websafe version is hex **CC3366**. The color can be described as middle muted rose. A complement of this color would be **4282772155**, and the grayscale version is **4286348412**.

A 20% lighter version of the original color is **4294934696**, and **4289462340** is the 20% darker color. If you saturate the color by 10%, you get **4293537379**, and if you desaturate by 10%, it is **4293549189**.

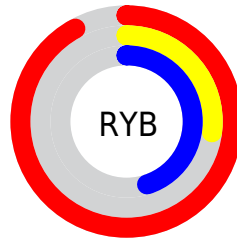
Distribution



Red (92%)

Green (27%)

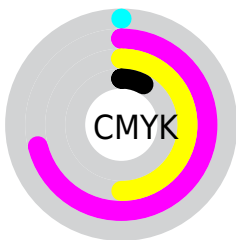
Blue (45%)



Red (92%)

Yellow (27%)

Blue (45%)

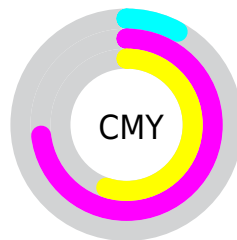


Cyan (0%)

Magenta (71%)

Yellow (50%)

Black (8%)



Cyan (8%)

Magenta (73%)

Yellow (55%)

Brightness & Saturation Gradients

These gradients show how the Android color 4293543284 changes by changing the brightness by 10 percent. The first figure shows a shift by +10% for each color and the second figure -10%.

Similar to the brightness gradients but the following saturation gradients show a change of the Android color 4293543284 by changing the saturation by 10% instead.

 4293543284

 4293543284

4294967295

 4291502684

 4294934696

 4289462340

 4294942147

 4287496238

 4294949599

 4285530138

 4294957051

 4283629570

 4294964735

 4281663490

 4278452224

 4278190080

 4293543284

 4293543284

 4293537379

 4293549189

 4293531219

 4293555349

 4293525571

 4293561254

 4293567415

 4293573320

 4293579224

 4293585385

 4293591034

 4293591039

Harmonies

Analogous

The Analogous color harmony consists of three colors that are next to each other on the color wheel.



4292235438



4293543284



4292827197

Triad

The Triadic color harmony groups three colors that are evenly spaced from another and form a triangle on the color wheel.



4293543284



4283274269



4278228464

Complementary

The Complementary color scheme is a pair of colors which are on the opposite of each other on the color wheel.



4293543284



4282772155

Split Complementary

Split-complementary colors differ from the complementary color scheme. The scheme consists of three colors, the original color and two neighbors of the complement color.



4278230476



4293543284



4278230105

Square

The Square scheme is like the rectangle color scheme, but the four colors are evenly spaced on the color wheel.



4293543284



4287530752



4278230677



4278224375

Rectangle

The Rectangle color scheme consists of four colors that form a rectangle on the color wheel.



4293543284



4291521048



4278230677



4278229223

Sweetspot

The Sweet Spot groups the original color and five complimentary colors.



4293543284



4294953433



4290332138



4286603369



4278190080



4286611584

Same Dimension

The Same Dimension uses a secret algorithm to generate beautiful new colors.



4293543284



4294911588



4293551685



4285885037



4290052148



4281729039

Inverse Universe

The Inverse Universe completely reimagines the original color for something new.



4293543284



4294911588



4282763754



4285885037



4290052148



4281729039

Previews

White Background



This preview shows how the Android color 4293543284 looks on a white background.

Color Contrast Check

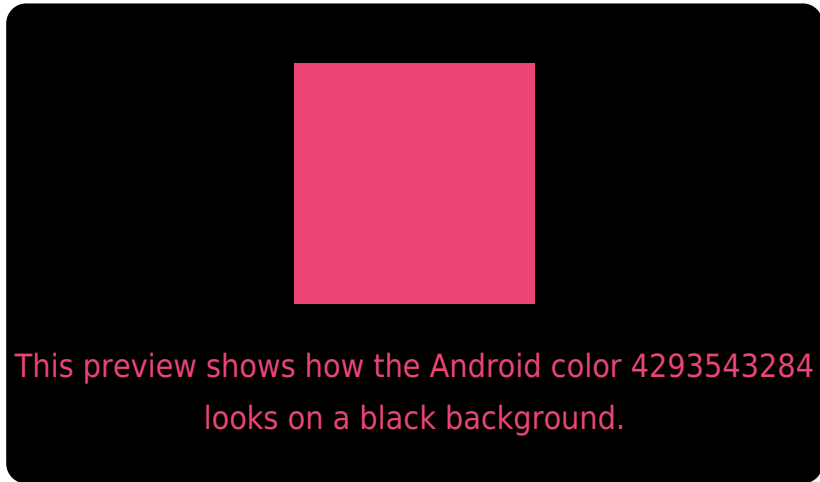
Large Text (above 18pt) WCAG AA ✓ Pass

Any Text WCAG AA ✗ Fail

Large Text (above 18pt) WCAG AAA ✗ Fail

Any Text WCAG AAA ✗ Fail

Black Background



Color Contrast Check

Large Text (above 18pt) WCAG AA ✓ Pass

Any Text WCAG AA ✓ Pass

Large Text (above 18pt) WCAG AAA ✓ Pass

Any Text WCAG AAA × Fail

If you want to check with other color combinations, try the [Color Contrast Checker](#).

Android 4293543284 Background



This preview shows how black text looks on a background with the Android color 4293543284.



This preview shows how white text looks on a background with the Android color 4293543284.

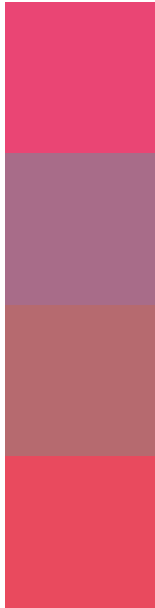
Color Blindness Simulation

Color vision deficiency is a very complex topic, and I could not describe the different causes any better than Wikipedia does, so if you want to learn more, you should check out their [article about color blindness](#).

Dichromacy



Trichromacy



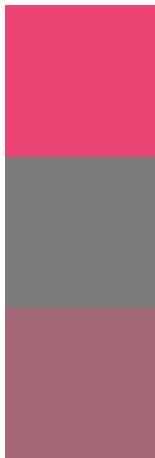
Original Color
4293543284

Protanomaly
4289227913

Deuteranomaly
4290144879

Tritanomaly
4293479006

Monochromacy



Original Color
4293543284

Achromatopsia
4286348412

Achromatomaly
4288964729

CSS Examples

Text

The CSS property to change the color of the text to Android 4293543284 is called "color". The color property can be set on classes, ids or directly on the HTML element.

This example shows how text in the color `rgb(234, 69, 116)` looks like.

```
.text, #text, p{  
    color:rgb(234, 69, 116)  
}
```

If you want to add a text shadow in that color use the text-shadow property, you can generate a text shadow directly with our [CSS Text Shadow Generator](#).

Here you see how black text with a 4 pixel rgb(234, 69, 116) colored shadow looks like.

```
.shadow{ text-shadow: 4px 4px 2px rgb(234, 69, 116) }
```

Border

The CSS property to change the border of an element to Android 4293543284 is called "border". The border property can be set on classes, ids or directly on the HTML element.

This example shows the color as border, it can be applied via the CSS property "border" or "border-color".

```
.border, #border, table{ border:4px solid rgb(234, 69, 116) }
```

If only the border color should be changed use the property `border-color`.

```
.border{ border-color:rgb(234, 69, 116) }
```

If you want to add a box shadow in that color use:

Here you see how a box with a 4 pixel `rgb(234, 69, 116)` colored shadow looks like.

```
.boxshadow{ -moz-box-shadow:4px 4px 4px  
4px rgb(234, 69, 116); -webkit-box-  
shadow:4px 4px 4px 4px rgb(234, 69, 116);  
box-shadow:4px 4px 4px 4px rgb(234, 69,  
116) }
```

Background

The CSS property to change the background color of an element to Android 4293543284 is called "background". The background property can be set on classes, ids or directly on the HTML element.

```
.background, #background, body{  
background: rgb(234, 69, 116) }
```

If only the background color should be changed can be used:

```
.background{ background-color: rgb(234, 69,  
116) }
```

This example shows the color as background, it is applied via the CSS property "background".

To optimize and compress your CSS code, you can use our [online CSS compressor and optimizer](#) based on csstidy. If you want to create a linear or radial gradient as background or border, check our [CSS Gradient Generator](#).

Hey! You found this booklet interesting? Support Converting Colors with the new Membership Option!

The pro membership hides all ads, plus gives you double the colors in the color bucket, and more awesome pro features!

[Learn more, Memberships starting at \\$2.50/m!](#)

**Follow me
on Twitter!**

@ConvertingColor