

Converting Colors

Android(4293543786)

Have a look what the booklet for
Android(4293543786) contains.

Android(4293543786)	3
<i>Conversions</i>	4
<i>Details</i>	6
<i>Harmonies</i>	11
<i>Previews</i>	23
<i>Color Blindness Simulation</i>	26
<i>CSS Examples</i>	29

Color

Android(4293543786)

Conversions

Conversions Part 1

Format	Color
Hex	EA476A
RGB	234, 71, 106
RGB Percent	92%, 28%, 42%
CMY	0.0824, 0.7216, 0.5843
CMYK	0.00, 0.70, 0.55, 0.08
HSL	347°, 80%, 60%
HSV	347°, 70%, 92%
XYZ	38.7864, 23.0395, 16.0385
YIQ	123.7270, 85.9130, 45.4410

Conversions

Conversions Part 2

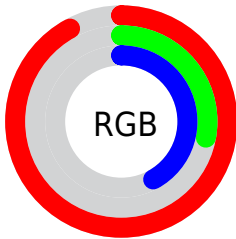
Format	Color
R_{YB}	234, 71, 106
Decimal	15353706
CIE _{Lab}	55.11, 64.34, 16.98
CIE _{LCh}	55, 66.548, 14.786
Yxy	23.0395, 0.4981, 0.2959
Android (android.graphics.Color)	4293543786 (0xFFEA476A)
YUV	123.7270, -8.7394, 96.7094
Hunter-Lab	47.9995, 60.2395, 13.7886

Details

The Android color **4293543786** is a dark color, and the websafe version is hex **CC3366**. The color can be described as middle muted rose. A complement of this color would be **4282903239**, and the grayscale version is **4286348412**.

A 20% lighter version of the original color is **4294934941**, and **4289462331** is the 20% darker color. If you saturate the color by 10%, you get **4293537880**, and if you desaturate by 10%, it is **4293549692**.

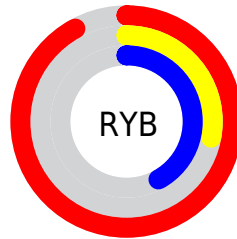
Distribution



Red (92%)

Green (28%)

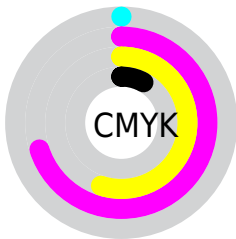
Blue (42%)



Red (92%)

Yellow (28%)

Blue (42%)

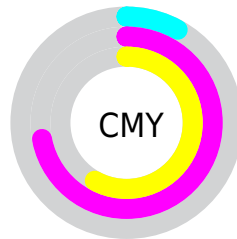


Cyan (0%)

Magenta (70%)

Yellow (55%)

Black (8%)



Cyan (8%)

Magenta (72%)

Yellow (58%)

Brightness & Saturation Gradients


These gradients show how the Android color 4293543786 changes by changing the brightness by 10 percent. The first figure shows a shift by +10% for each color and the second figure -10%.

Similar to the brightness gradients but the following saturation gradients show a change of the Android color 4293543786 by changing the saturation by 10% instead.

 4293543786

 4293543786

4294967295

 4291503442

 4294934941

 4289462331

 4294942392

 4287430694

 4294949843

 4285464594

 4294957296

 4283564033

 4294964991

 4281597954

 4278190080

 4293543786

 4293543786

 4293537880

 4293549692

 4293531717

 4293555855

 4293525811

 4293561761

 4293525554

 4293567924

 4293573830

 4293579736

 4293585899

 4293591037

 4293591039

Harmonies

Analogous

The Analogous color harmony consists of three colors that are next to each other on the color wheel.



4292627620



4293543786



4292566324

Triad

The Triadic color harmony groups three colors that are evenly spaced from another and form a triangle on the color wheel.



4293543786



4282291753



4278227956

Complementary

The Complementary color scheme is a pair of colors which are on the opposite of each other on the color wheel.



4293543786



4282903239

Split Complementary

Split-complementary colors differ from the complementary color scheme. The scheme consists of three colors, the original color and two neighbors of the complement color.



4278230228



4293543786



4278230116

Square

The Square scheme is like the rectangle color scheme, but the four colors are evenly spaced on the color wheel.



4293543786



4286876160



4278230688



4281762292

Rectangle

The Rectangle color scheme consists of four colors that form a rectangle on the color wheel.



4293543786



4291063309



4278230688



4278228972

Sweetspot

The Sweet Spot groups the original color and five complimentary colors.



4293543786



4294953429



4291250154



4286603366



4278190080



4286611584

Same Dimension

The Same Dimension uses a secret algorithm to generate beautiful new colors.



4293543786



4294912343



4293555527



4285885036



4290052135



4281729035

Inverse Universe

The Inverse Universe completely reimagines the original color for something new.



4293543786



4294912343



4282891498



4285885036



4290052135



4281729035

Previews

White Background



This preview shows how the Android color 4293543786 looks on a white background.

Color Contrast Check

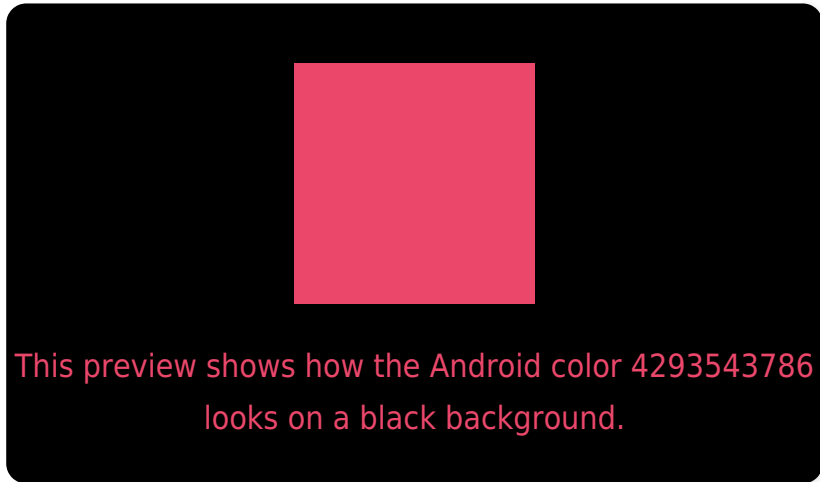
Large Text (above 18pt) WCAG AA ✓ Pass

Any Text WCAG AA × Fail

Large Text (above 18pt) WCAG AAA × Fail

Any Text WCAG AAA × Fail

Black Background



Color Contrast Check

Large Text (above 18pt) WCAG AA ✓ Pass

Any Text WCAG AA ✓ Pass

Large Text (above 18pt) WCAG AAA ✓ Pass

Any Text WCAG AAA × Fail

If you want to check with other color combinations, try the [Color Contrast Checker](#).

Android 4293543786 Background



This preview shows how black text looks on a background with the Android color 4293543786.



This preview shows how white text looks on a background with the Android color 4293543786.

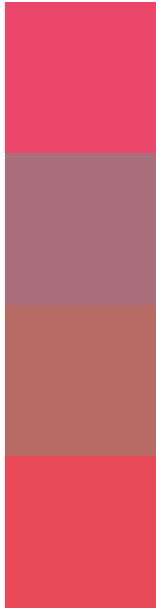
Color Blindness Simulation

Color vision deficiency is a very complex topic, and I could not describe the different causes any better than Wikipedia does, so if you want to learn more, you should check out their [article about color blindness](#).

Dichromacy



Trichromacy



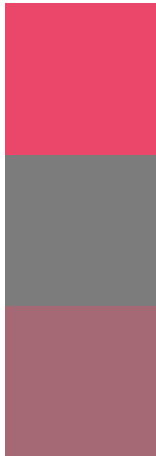
Original Color
4293543786

Protanomaly
4289359485

Deuteranomaly
4290276197

Tritanomaly
4293479001

Monochromacy



Original Color
4293543786

Achromatopsia
4286348412

Achromatomaly
4288964981

CSS Examples

Text

The CSS property to change the color of the text to Android 4293543786 is called "color". The color property can be set on classes, ids or directly on the HTML element.

This example shows how text in the color `rgb(234, 71, 106)` looks like.

```
.text, #text, p{  
    color:rgb(234, 71, 106)  
}
```

If you want to add a text shadow in that color use the text-shadow property, you can generate a text shadow directly with our [CSS Text Shadow Generator](#).

Here you see how black text with a 4 pixel rgb(234, 71, 106) colored shadow looks like.

```
.shadow{ text-shadow: 4px 4px 2px rgb(234, 71, 106) }
```

Border

The CSS property to change the border of an element to Android 4293543786 is called "border". The border property can be set on classes, ids or directly on the HTML element.

This example shows the color as border, it can be applied via the CSS property "border" or "border-color".

```
.border, #border, table{ border:4px solid rgb(234, 71, 106) }
```

If only the border color should be changed use the property border-color.

```
.border{ border-color:rgb(234, 71, 106) }
```

If you want to add a box shadow in that color use:

Here you see how a box with a 4 pixel rgb(234, 71, 106) colored shadow looks like.

```
.boxshadow{ -moz-box-shadow:4px 4px 4px  
4px rgb(234, 71, 106); -webkit-box-  
shadow:4px 4px 4px 4px rgb(234, 71, 106);  
box-shadow:4px 4px 4px 4px rgb(234, 71,  
106) }
```

Background

The CSS property to change the background color of an element to Android 4293543786 is called "background". The background property can be set on classes, ids or directly on the HTML element.

```
.background, #background, body{  
background: rgb(234, 71, 106) }
```

If only the background color should be changed can be used:

```
.background{ background-color: rgb(234, 71,  
106) }
```

This example shows the color as background, it is applied via the CSS property "background".

To optimize and compress your CSS code, you can use our [online CSS compressor and optimizer](#) based on csstidy. If you want to create a linear or radial gradient as background or border, check our [CSS Gradient Generator](#).

Hey! You found this booklet interesting? Support Converting Colors with the new Membership Option!

The pro membership hides all ads, plus gives you double the colors in the color bucket, and more awesome pro features!

[Learn more, Memberships starting at \\$2.50/m!](#)

**Follow me
on Twitter!**

@ConvertingColor