

# Converting Colors

Android(4293545333)

Have a look what the booklet for  
Android(4293545333) contains.

<b>Android(4293545333)</b> .....	3
<b><i>Conversions</i></b> .....	4
<b><i>Details</i></b> .....	6
<b><i>Harmonies</i></b> .....	11
<b><i>Previews</i></b> .....	23
<b><i>Color Blindness Simulation</i></b> .....	26
<b><i>CSS Examples</i></b> .....	29

**Color**

**Android(4293545333)**

# Conversions

## Conversions Part 1

Format	Color
Hex	EA4D75
RGB	234, 77, 117
RGB Percent	92%, 30%, 46%
CMY	0.0824, 0.6980, 0.5412
CMYK	0.00, 0.67, 0.50, 0.08
HSL	345°, 79%, 61%
HSV	345°, 67%, 92%
XYZ	39.7964, 24.0845, 19.3809
YIQ	128.5030, 80.7320, 45.7240

# Conversions

## Conversions Part 2

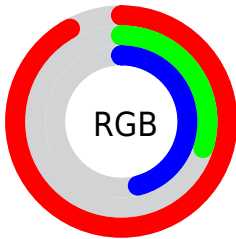
<b>Format</b>	<b>Color</b>
<b>RYB</b>	234, 77, 117
Decimal	15355253
CIELab	56.17, 62.97, 11.93
CIELCh	56, 64.090, 10.729
Yxy	24.0845, 0.4780, 0.2893
Android (android.graphics.Color)	4293545333 (0xFFEA4D75)
YUV	128.5030, -5.6710, 92.5209
Hunter-Lab	49.0760, 58.8653, 10.9386

# Details

The Android color **4293545333** is a dark color, and the websafe version is hex **CC3366**. The color can be described as middle muted rose. A complement of this color would be **4283296450**, and the grayscale version is **4286677377**.

A 20% lighter version of the original color is **4294936489**, and **4289527877** is the 20% darker color. If you saturate the color by 10%, you get **4293539428**, and if you desaturate by 10%, it is **4293551238**.

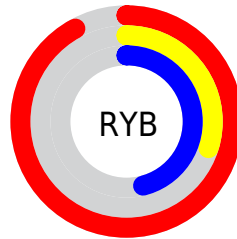
# Distribution



Red (92%)

Green (30%)

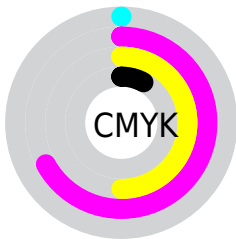
Blue (46%)



Red (92%)

Yellow (30%)

Blue (46%)

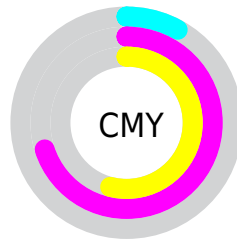


Cyan (0%)

Magenta (67%)

Yellow (50%)

Black (8%)



Cyan (8%)

Magenta (70%)

Yellow (54%)

# Brightness & Saturation Gradients

These gradients show how the Android color 4293545333 changes by changing the brightness by 10 percent. The first figure shows a shift by +10% for each color and the second figure -10%.

Similar to the brightness gradients but the following saturation gradients show a change of the Android color 4293545333 by changing the saturation by 10% instead.



 4293545333

 4293545333

4294967295

 4291505501

 4294936489

 4289527877

 4294943684

 4287496239

 4294951136

 4285595675

 4294958588

 4283695105

 4294966271

 4281794562

 4278779904

 4278190080

 4293545333

 4293545333

 4293539428

 4293551238

 4293533266

 4293557400

 4293527361

 4293563305

 4293525564

 4293569467

 4293575372

 4293581278

 4293587439

 4293591039

# Harmonies

## Analogous

The Analogous color harmony consists of three colors that are next to each other on the color wheel.



4292367789



4293545333



4292828736

# Triad

The Triadic color harmony groups three colors that are evenly spaced from another and form a triangle on the color wheel.



4293545333



4283471657



4278228976

# Complementary

The Complementary color scheme is a pair of colors which are on the opposite of each other on the color wheel.



4293545333



4283296450

# Split Complementary

Split-complementary colors differ from the complementary color scheme. The scheme consists of three colors, the original color and two neighbors of the complement color.



4278230990



4293545333



4278230624

# Square

The Square scheme is like the rectangle color scheme, but the four colors are evenly spaced on the color wheel.



4293545333



4287597056



4278231194



4280256501

# Rectangle

The Rectangle color scheme consists of four colors that form a rectangle on the color wheel.



4293545333



4291522336



4278231194



4278229736



# Sweetspot

The Sweet Spot groups the original color and five complimentary colors.



4293545333



4294954201



4290792938



4286603625



4278190080



4286611584



# Same Dimension

The Same Dimension uses a secret algorithm to generate beautiful new colors.



4293545333



4294914149



4293554765



4285885037



4290052142



4281729038



# Inverse Universe

The Inverse Universe completely reimagines the original color for something new.



4293545333



4294914149



4283287018



4285885037



4290052142



4281729038



# Previews

## White Background



This preview shows how the Android color 4293545333 looks on a white background.

## Color Contrast Check

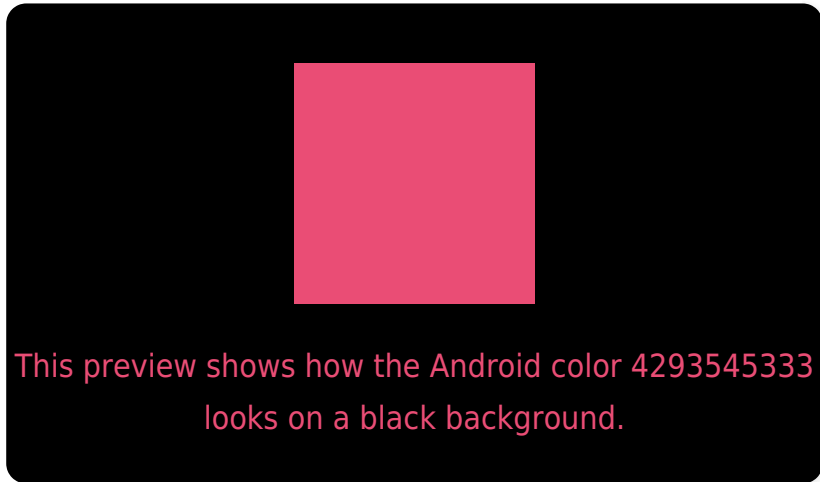
Large Text (above 18pt) WCAG AA ✓ Pass

Any Text WCAG AA ✗ Fail

Large Text (above 18pt) WCAG AAA ✗ Fail

Any Text WCAG AAA ✗ Fail

# Black Background



## Color Contrast Check

Large Text (above 18pt) WCAG AA ✓ Pass

Any Text WCAG AA ✓ Pass

Large Text (above 18pt) WCAG AAA ✓ Pass

Any Text WCAG AAA × Fail

If you want to check with other color combinations, try the [Color Contrast Checker](#).



# Android 4293545333 Background



This preview shows how black text looks on a background with the Android color 4293545333.



This preview shows how white text looks on a background with the Android color 4293545333.

# Color Blindness Simulation

Color vision deficiency is a very complex topic, and I could not describe the different causes any better than Wikipedia does, so if you want to learn more, you should check out their [article about color blindness](#).

## Dichromacy



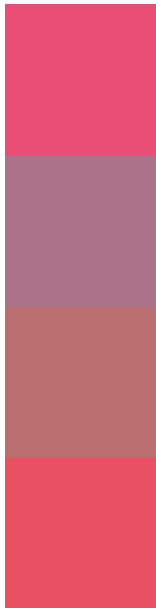
**Original Color**  
4293545333

**Protanopia**  
4287006356

**Deuteranopia**  
4288512621



# Trichromacy



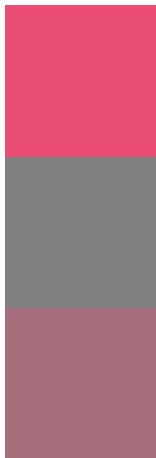
**Original Color**  
4293545333

**Protanomaly**  
4289360265

**Deuteranomaly**  
4290342768

**Tritanomaly**  
4293480803

# Monochromacy



**Original Color**  
4293545333

**Achromatopsia**  
4286677377

**Achromatomaly**  
4289162877

# CSS Examples

## Text

The CSS property to change the color of the text to Android 4293545333 is called "color". The color property can be set on classes, ids or directly on the HTML element.

This example shows how text in the color `rgb(234, 77, 117)` looks like.

```
.text, #text, p{  
    color:rgb(234, 77, 117)  
}
```

If you want to add a text shadow in that color use the text-shadow property, you can generate a text shadow directly with our [CSS Text Shadow Generator](#).

Here you see how black text with a 4 pixel rgb(234, 77, 117) colored shadow looks like.

```
.shadow{ text-shadow: 4px 4px 2px rgb(234, 77, 117) }
```

## Border

The CSS property to change the border of an element to Android 4293545333 is called "border". The border property can be set on classes, ids or directly on the HTML element.

This example shows the color as border, it can be applied via the CSS property "border" or "border-color".

```
.border, #border, table{ border:4px solid rgb(234, 77, 117) }
```

If only the border color should be changed use the property border-color.

```
.border{ border-color:rgb(234, 77, 117) }
```

If you want to add a box shadow in that color use:

Here you see how a box with a 4 pixel rgb(234, 77, 117) colored shadow looks like.

```
.boxshadow{ -moz-box-shadow:4px 4px 4px  
4px rgb(234, 77, 117); -webkit-box-  
shadow:4px 4px 4px 4px rgb(234, 77, 117);  
box-shadow:4px 4px 4px 4px rgb(234, 77,  
117) }
```

# Background

The CSS property to change the background color of an element to Android 4293545333 is called "background". The background property can be set on classes, ids or directly on the HTML element.

```
.background, #background, body{  
background: rgb(234, 77, 117) }
```

If only the background color should be changed can be used:

```
.background{ background-color: rgb(234, 77,  
117) }
```

This example shows the color as background, it is applied via the CSS property "background".

To optimize and compress your CSS code, you can use our [online CSS compressor and optimizer](#) based on csstidy. If you want to create a linear or radial gradient as background or border, check our [CSS Gradient Generator](#).



Hey! You found this booklet interesting? Support Converting Colors with the new Membership Option!

The pro membership hides all ads, plus gives you double the colors in the color bucket, and more awesome pro features!

**[Learn more, Memberships starting at \\$2.50/m!](#)**

**Follow me  
on Twitter!**

@ConvertingColor