

Converting Colors

Android(4293547154)

Have a look what the booklet for
Android(4293547154) contains.

Android(4293547154)	3
<i>Conversions</i>	4
<i>Details</i>	6
<i>Harmonies</i>	11
<i>Previews</i>	23
<i>Color Blindness Simulation</i>	26
<i>CSS Examples</i>	29

Color

Android(4293547154)

Conversions

Conversions Part 1

Format	Color
Hex	EA5492
RGB	234, 84, 146
RGB Percent	92%, 33%, 57%
CMY	0.0824, 0.6706, 0.4275
CMYK	0.00, 0.64, 0.38, 0.08
HSL	335°, 78%, 62%
HSV	335°, 64%, 92%
XYZ	42.2903, 25.9084, 29.9660
YIQ	135.9180, 69.4980, 51.0820

Conversions

Conversions Part 2

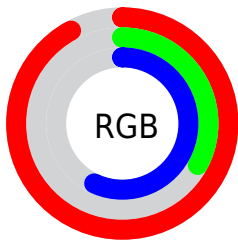
Format	Color
R_{YB}	234, 84, 146
Decimal	15357074
CIE _{Lab}	57.95, 62.96, -2.59
CIE _{LCh}	58, 63.017, 357.642
Yxy	25.9084, 0.4308, 0.2639
Android (android.graphics.Color)	4293547154 (0xFFEA5492)
YUV	135.9180, 4.9704, 86.0179
Hunter-Lab	50.9003, 59.2305, 0.7250

Details

The Android color **4293547154** is a light color, and the websafe version is hex **FF6699**. The color can be described as light muted rose. A complement of this color would be **4283755180**, and the grayscale version is **4287137928**.

A 20% lighter version of the original color is **4294938056**, and **4289596512** is the 20% darker color. If you saturate the color by 10%, you get **4293541252**, and if you desaturate by 10%, it is **4293553056**.

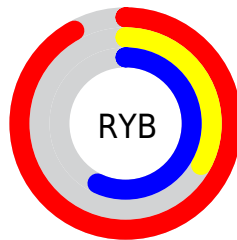
Distribution



Red (92%)

Green (33%)

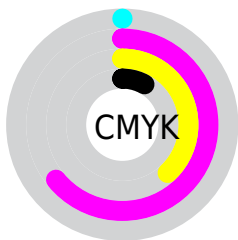
Blue (57%)



Red (92%)

Yellow (33%)

Blue (57%)

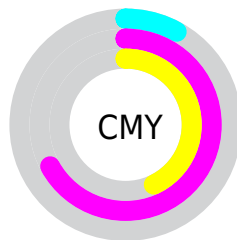


Cyan (0%)

Magenta (64%)

Yellow (38%)

Black (8%)



Cyan (8%)

Magenta (67%)

Yellow (43%)

Brightness & Saturation Gradients

These gradients show how the Android color 4293547154 changes by changing the brightness by 10 percent. The first figure shows a shift by +10% for each color and the second figure -10%.

Similar to the brightness gradients but the following saturation gradients show a change of the Android color 4293547154 by changing the saturation by 10% instead.

 4293547154

 4293547154

4294967295

 4291573368

 4294938056

 4289596512

 4294945508

 4287627336

 4294952959

 4285726770

 4294960383

 4283826205

 4282187779

 4279697408

 4278190080

 4293547154

 4293547154

 4293541252

 4293553056

 4293535095

 4293559213

 4293529193

 4293565115

 4293525601

 4293571273

 4293577175

 4293583076

 4293589234

 4293591039

Harmonies

Analogous

The Analogous color harmony consists of three colors that are next to each other on the color wheel.



4291388871



4293547154



4293614428

Triad

The Triadic color harmony groups three colors that are evenly spaced from another and form a triangle on the color wheel.



4293547154



4285830938



4278231016

Complementary

The Complementary color scheme is a pair of colors which are on the opposite of each other on the color wheel.



4293547154



4283755180

Split Complementary

Split-complementary colors differ from the complementary color scheme. The scheme consists of three colors, the original color and two neighbors of the complement color.



4278232509



4293547154



4279541837

Square

The Square scheme is like the rectangle color scheme, but the four colors are evenly spaced on the color wheel.



4293547154



4289365760



4278232197



4278227962

Rectangle

The Rectangle color scheme consists of four colors that form a rectangle on the color wheel.



4293547154



4292766011



4278232197



4278231772

Sweetspot

The Sweet Spot groups the original color and five complimentary colors.



4293547154



4294954979



4289418474



4286603886



4278190080



4286611584

Same Dimension

The Same Dimension uses a secret algorithm to generate beautiful new colors.



4293547154



4294917004



4293550420



4285885038



4290052171



4281729046

Inverse Universe

The Inverse Universe completely reimagines the original color for something new.



4293547154



4294917004



4283752170



4285885038



4290052171



4281729046

Previews

White Background



This preview shows how the Android color 4293547154 looks on a white background.

Color Contrast Check

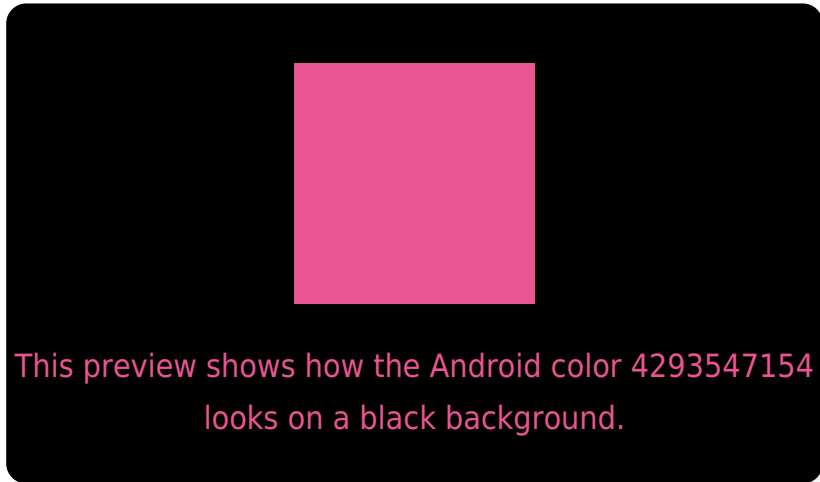
Large Text (above 18pt) WCAG AA ✓ Pass

Any Text WCAG AA ✗ Fail

Large Text (above 18pt) WCAG AAA ✗ Fail

Any Text WCAG AAA ✗ Fail

Black Background



Color Contrast Check

Large Text (above 18pt) WCAG AA ✓ Pass

Any Text WCAG AA ✓ Pass

Large Text (above 18pt) WCAG AAA ✓ Pass

Any Text WCAG AAA × Fail

If you want to check with other color combinations, try the [Color Contrast Checker](#).

Android 4293547154 Background



This preview shows how black text looks on a background with the Android color 4293547154.



This preview shows how white text looks on a background with the Android color 4293547154.

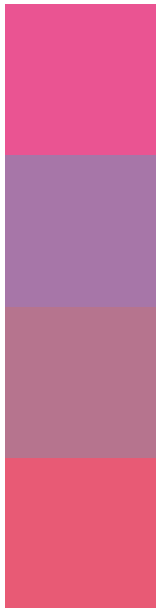
Color Blindness Simulation

Color vision deficiency is a very complex topic, and I could not describe the different causes any better than Wikipedia does, so if you want to learn more, you should check out their [article about color blindness](#).

Dichromacy



Trichromacy



Original Color
4293547154

Protanomaly
4289164968

Deuteranomaly
4290147470

Tritanomaly
4293417589

Monochromacy



Original Color
4293547154

Achromatopsia
4287137928

Achromatomaly
4289492364

CSS Examples

Text

The CSS property to change the color of the text to Android 4293547154 is called "color". The color property can be set on classes, ids or directly on the HTML element.

This example shows how text in the color `rgb(234, 84, 146)` looks like.

```
.text, #text, p{  
    color:rgb(234, 84, 146)  
}
```

If you want to add a text shadow in that color use the text-shadow property, you can generate a text shadow directly with our [CSS Text Shadow Generator](#).

Here you see how black text with a 4 pixel rgb(234, 84, 146) colored shadow looks like.

```
.shadow{ text-shadow: 4px 4px 2px rgb(234, 84, 146) }
```

Border

The CSS property to change the border of an element to Android 4293547154 is called "border". The border property can be set on classes, ids or directly on the HTML element.

This example shows the color as border, it can be applied via the CSS property "border" or "border-color".

```
.border, #border, table{ border:4px solid rgb(234, 84, 146) }
```

If only the border color should be changed use the property `border-color`.

```
.border{ border-color:rgb(234, 84, 146) }
```

If you want to add a box shadow in that color use:

Here you see how a box with a 4 pixel `rgb(234, 84, 146)` colored shadow looks like.

```
.boxshadow{ -moz-box-shadow:4px 4px 4px  
4px rgb(234, 84, 146); -webkit-box-  
shadow:4px 4px 4px 4px rgb(234, 84, 146);  
box-shadow:4px 4px 4px 4px rgb(234, 84,  
146) }
```

Background

The CSS property to change the background color of an element to Android 4293547154 is called "background". The background property can be set on classes, ids or directly on the HTML element.

```
.background, #background, body{  
background: rgb(234, 84, 146) }
```

If only the background color should be changed can be used:

```
.background{ background-color: rgb(234, 84,  
146) }
```

This example shows the color as background, it is applied via the CSS property "background".

To optimize and compress your CSS code, you can use our [online CSS compressor and optimizer](#) based on csstidy. If you want to create a linear or radial gradient as background or border, check our [CSS Gradient Generator](#).

Hey! You found this booklet interesting? Support Converting Colors with the new Membership Option!

The pro membership hides all ads, plus gives you double the colors in the color bucket, and more awesome pro features!

[Learn more, Memberships starting at \\$2.50/m!](#)

**Follow me
on Twitter!**

@ConvertingColor