

# Converting Colors

Android(4293550977)

Have a look what the booklet for  
Android(4293550977) contains.

<b>Android(4293550977)</b> .....	3
<i><b>Conversions</b></i> .....	4
<i><b>Details</b></i> .....	6
<i><b>Harmonies</b></i> .....	11
<i><b>Previews</b></i> .....	23
<i><b>Color Blindness Simulation</b></i> .....	26
<i><b>CSS Examples</b></i> .....	29

# **Color**

**Android(4293550977)**

# Conversions

## Conversions Part 1

Format	Color
Hex	EA6381
RGB	234, 99, 129
RGB Percent	92%, 39%, 51%
CMY	0.0824, 0.6118, 0.4941
CMYK	0.00, 0.58, 0.45, 0.08
HSL	347°, 76%, 65%
HSV	347°, 58%, 92%
XYZ	42.3560, 28.0011, 23.9412
YIQ	142.7850, 70.8300, 37.9500

# Conversions

## Conversions Part 2

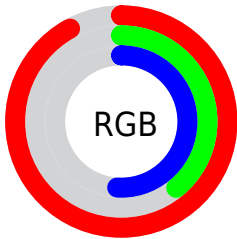
<b>Format</b>	<b>Color</b>
<b>R<sub>YB</sub></b>	234, 99, 129
Decimal	15360897
CIE <sub>Lab</sub>	59.89, 54.80, 10.13
CIE <sub>LCh</sub>	60, 55.728, 10.473
Yxy	28.0011, 0.4492, 0.2969
Android (android.graphics.Color)	4293550977 (0xFFEA6381)
YUV	142.7850, -6.7960, 79.9956
Hunter-Lab	52.9161, 50.2749, 10.2162

# Details

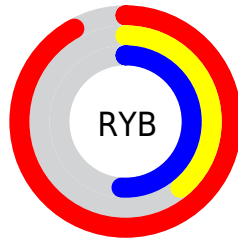
The Android color **4293550977** is a light color, and the websafe version is hex **FF6699**. A complement of this color would be **4284738252**, and the grayscale version is **4287598479**.

A 20% lighter version of the original color is **4294941366**, and **4289604176** is the 20% darker color. If you saturate the color by 10%, you get **4293545071**, and if you desaturate by 10%, it is **4293556883**.

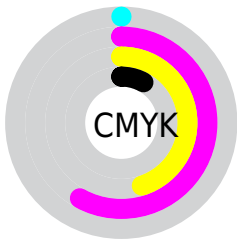
# Distribution



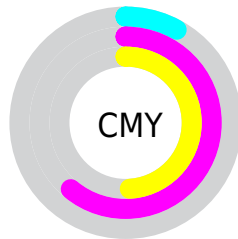
- Red (92%)
- Green (39%)
- Blue (51%)



- Red (92%)
- Yellow (39%)
- Blue (51%)



- Cyan (0%)
- Magenta (58%)
- Yellow (45%)
- Black (8%)



- Cyan (8%)
- Magenta (61%)
- Yellow (49%)

# Brightness & Saturation Gradients

These gradients show how the Android color 4293550977 changes by changing the brightness by 10 percent. The first figure shows a shift by +10% for each color and the second figure -10%.

Similar to the brightness gradients but the following saturation gradients show a change of the Android color 4293550977 by changing the saturation by 10% instead.





4293550977



4293550977

4294967295



4291577704



4294941366



4289604176



4294948817



4287627321



4294956013



4285726756



4294963711



4283826191



4282187779



4279762945



4278190080



4293550977



4293550977

 4293545071

 4293556883

 4293538909

 4293563045

 4293533002

 4293568952

 4293526840

 4293575114

 4293525556

 4293581020

 4293586926

 4293591039

# Harmonies

## Analogous

The Analogous color harmony consists of three colors that are next to each other on the color wheel.



4292438450



4293550977



4292964179

# Triad

The Triadic color harmony groups three colors that are evenly spaced from another and form a triangle on the color wheel.



4293550977



4284849985



4278230764

# Complementary

The Complementary color scheme is a pair of colors which are on the opposite of each other on the color wheel.



4293550977



4284738252

# Split Complementary

Split-complementary colors differ from the complementary color scheme. The scheme consists of three colors, the original color and two neighbors of the complement color.



4278232783



4293550977



4278232686

# Square

The Square scheme is like the rectangle color scheme, but the four colors are evenly spaced on the color wheel.



4293550977



4288320294



4278233249



4283470065

# Rectangle

The Rectangle color scheme consists of four colors that form a rectangle on the color wheel.



4293550977



4291853370



4278233249



4278231781



# Sweetspot

The Sweet Spot groups the original color and five complimentary colors.



4293550977



4294956253



4291519466



4286604908



4278190080



4286611584



# Same Dimension

The Same Dimension uses a secret algorithm to generate beautiful new colors.



4293550977



4294922102



4293560163



4285885036



4290052136



4281729036



# Inverse Universe

The Inverse Universe completely reimagines the original color for something new.



4293550977



4294922102



4284729066



4285885036



4290052136



4281729036



# Previews

## White Background



This preview shows how the Android color 4293550977 looks on a white background.

## Color Contrast Check

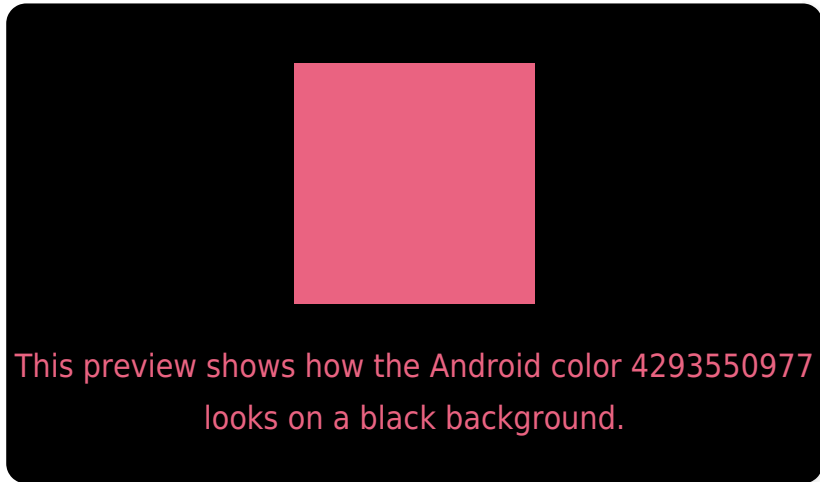
Large Text (above 18pt) WCAG AA ✓ Pass

Any Text WCAG AA ✗ Fail

Large Text (above 18pt) WCAG AAA ✗ Fail

Any Text WCAG AAA ✗ Fail

# Black Background



## Color Contrast Check

Large Text (above 18pt) WCAG AA ✓ Pass

Any Text WCAG AA ✓ Pass

Large Text (above 18pt) WCAG AAA ✓ Pass

Any Text WCAG AAA × Fail

If you want to check with other color combinations, try the [Color Contrast Checker](#).



# Android 4293550977 Background



This preview shows how black text looks on a background with the Android color 4293550977.

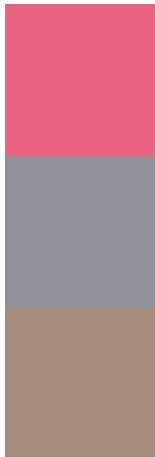


This preview shows how white text looks on a background with the Android color 4293550977.

# Color Blindness Simulation

Color vision deficiency is a very complex topic, and I could not describe the different causes any better than Wikipedia does, so if you want to learn more, you should check out their [article about color blindness](#).

## Dichromacy



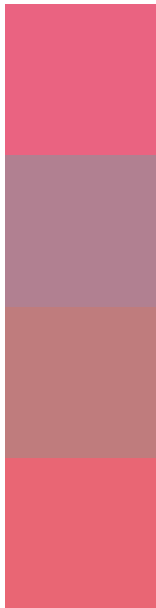
**Original Color**  
4293550977

**Protanopia**  
4287729818

**Deuteranopia**  
4289104763



# Trichromacy



**Original Color**  
4293550977

**Protanomaly**  
4289822865

**Deuteranomaly**  
4290739325

**Tritanomaly**  
4293486196

# Monochromacy



**Original Color**  
4293550977

**Achromatopsia**  
4287598479

**Achromatomaly**  
4289757066

# CSS Examples

## Text

The CSS property to change the color of the text to Android 4293550977 is called "color". The color property can be set on classes, ids or directly on the HTML element.

This example shows how text in the color `rgb(234, 99, 129)` looks like.

```
.text, #text, p{  
    color:rgb(234, 99, 129)  
}
```

If you want to add a text shadow in that color use the text-shadow property, you can generate a text shadow directly with our [CSS Text Shadow Generator](#).

Here you see how black text with a 4 pixel rgb(234, 99, 129) colored shadow looks like.

```
.shadow{ text-shadow: 4px 4px 2px rgb(234, 99, 129) }
```

## Border

The CSS property to change the border of an element to Android 4293550977 is called "border". The border property can be set on classes, ids or directly on the HTML element.

This example shows the color as border, it can be applied via the CSS property "border" or "border-color".

```
.border, #border, table{ border:4px solid rgb(234, 99, 129) }
```

If only the border color should be changed use the property `border-color`.

```
.border{ border-color:rgb(234, 99, 129) }
```

If you want to add a box shadow in that color use:

Here you see how a box with a 4 pixel `rgb(234, 99, 129)` colored shadow looks like.

```
.boxshadow{ -moz-box-shadow:4px 4px 4px  
4px rgb(234, 99, 129); -webkit-box-  
shadow:4px 4px 4px 4px rgb(234, 99, 129);  
box-shadow:4px 4px 4px 4px rgb(234, 99,  
129) }
```

# Background

The CSS property to change the background color of an element to Android 4293550977 is called "background". The background property can be set on classes, ids or directly on the HTML element.

```
.background, #background, body{  
background: rgb(234, 99, 129) }
```

If only the background color should be changed can be used:

```
.background{ background-color: rgb(234, 99,  
129) }
```

This example shows the color as background, it is applied via the CSS property "background".

To optimize and compress your CSS code, you can use our [online CSS compressor and optimizer](#) based on csstidy. If you want to create a linear or radial gradient as background or border, check our [CSS Gradient Generator](#).



Hey! You found this booklet interesting? Support Converting Colors with the new Membership Option!

The pro membership hides all ads, plus gives you double the colors in the color bucket, and more awesome pro features!

**[Learn more, Memberships starting at \\$2.50/m!](#)**

**Follow me  
on Twitter!**

@ConvertingColor