

# Converting Colors

Android(4293553562)

Have a look what the booklet for  
Android(4293553562) contains.

<b>Android(4293553562)</b> .....	3
<b><i>Conversions</i></b> .....	4
<b><i>Details</i></b> .....	6
<b><i>Harmonies</i></b> .....	11
<b><i>Previews</i></b> .....	23
<b><i>Color Blindness Simulation</i></b> .....	26
<b><i>CSS Examples</i></b> .....	29

# **Color**

**Android(4293553562)**

# Conversions

## Conversions Part 1

Format	Color
Hex	EA6D9A
RGB	234, 109, 154
RGB Percent	92%, 43%, 60%
CMY	0.0824, 0.5725, 0.3961
CMYK	0.00, 0.53, 0.34, 0.08
HSL	338°, 75%, 67%
HSV	338°, 53%, 92%
XYZ	45.2331, 30.7628, 34.1256
YIQ	151.5050, 60.0550, 40.4950

# Conversions

## Conversions Part 2

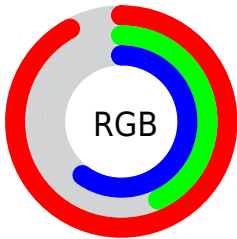
<b>Format</b>	<b>Color</b>
<b>R<sub>YB</sub></b>	234, 109, 154
Decimal	15363482
CIE <sub>Lab</sub>	62.31, 52.84, -0.84
CIE <sub>LCh</sub>	62, 52.847, 359.088
Yxy	30.7628, 0.4108, 0.2794
Android (android.graphics.Color)	4293553562 (0xFFEA6D9A)
YUV	151.5050, 1.2300, 72.3481
Hunter-Lab	55.4642, 48.5108, 2.3454

# Details

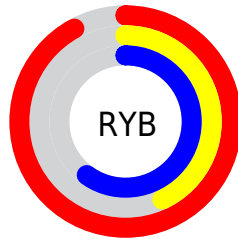
The Android color `4293553562` is a light color, and the websafe version is hex `FF6699`. A complement of this color would be `4285393597`, and the grayscale version is `4288124823`.

A 20% lighter version of the original color is `4294943952`, and `4289672807` is the 20% darker color. If you saturate the color by 10%, you get `4293547659`, and if you desaturate by 10%, it is `4293559465`.

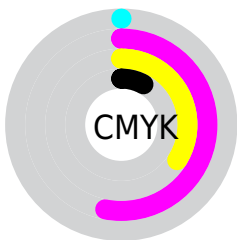
# Distribution



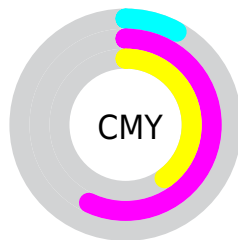
- Red (92%)
- Green (43%)
- Blue (60%)



- Red (92%)
- Yellow (43%)
- Blue (60%)



- Cyan (0%)
- Magenta (53%)
- Yellow (34%)
- Black (8%)



- Cyan (8%)
- Magenta (57%)
- Yellow (40%)

# Brightness & Saturation Gradients

These gradients show how the Android color 4293553562 changes by changing the brightness by 10 percent. The first figure shows a shift by +10% for each color and the second figure -10%.

Similar to the brightness gradients but the following saturation gradients show a change of the Android color 4293553562 by changing the saturation by 10% instead.



 4293553562

 4293553562

4294967295

 4291580544

 4294943952

 4289672807

 4294951149

 4287763791

 4294958591

 4285857848

 4294966271

 4284088355

 4282384397

 4280352769

 4278190080

 4293553562

 4293553562

 4293547659

 4293559465

 4293541500

 4293565624

 4293535597

 4293571527

 4293529438

 4293577686

 4293525588

 4293583589

 4293589492

 4293591039

# Harmonies

## Analogous

The Analogous color harmony consists of three colors that are next to each other on the color wheel.



4291786952



4293553562



4293620332

# Triad

The Triadic color harmony groups three colors that are evenly spaced from another and form a triangle on the color wheel.



4293553562



4286816576



4278233318

# Complementary

The Complementary color scheme is a pair of colors which are on the opposite of each other on the color wheel.



4293553562



4285393597

# Split Complementary

Split-complementary colors differ from the complementary color scheme. The scheme consists of three colors, the original color and two neighbors of the complement color.



4278234563



4293553562



4282624612

# Square

The Square scheme is like the rectangle color scheme, but the four colors are evenly spaced on the color wheel.



4293553562



4289893427



4278234772



4280589556

# Rectangle

The Rectangle color scheme consists of four colors that form a rectangle on the color wheel.



4293553562



4292836433



4278234772



4278233820



# Sweetspot

The Sweet Spot groups the original color and five complimentary colors.



4293553562



4294956773



4290538986



4286605168



4278190080



4286611584



# Same Dimension

The Same Dimension uses a secret algorithm to generate beautiful new colors.



4293553562



4294925463



4293557869



4285885038



4290052161



4281729043



# Inverse Universe

The Inverse Universe completely reimagines the original color for something new.



4293553562



4294925463



4285389290



4285885038



4290052161



4281729043



# Previews

## White Background



This preview shows how the Android color 4293553562 looks on a white background.

## Color Contrast Check

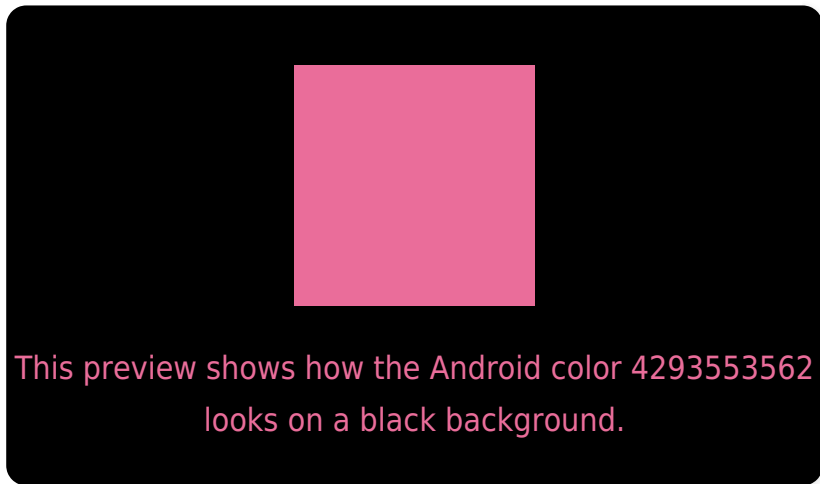
Large Text (above 18pt) WCAG AA × Fail

Any Text WCAG AA × Fail

Large Text (above 18pt) WCAG AAA × Fail

Any Text WCAG AAA × Fail

# Black Background



## Color Contrast Check

Large Text (above 18pt) WCAG AA ✓ Pass

Any Text WCAG AA ✓ Pass

Large Text (above 18pt) WCAG AAA ✓ Pass

Any Text WCAG AAA ✓ Pass

If you want to check with other color combinations, try the [Color Contrast Checker](#).



# Android 4293553562 Background



This preview shows how black text looks on a background with the Android color 4293553562.



This preview shows how white text looks on a background with the Android color 4293553562.

# Color Blindness Simulation

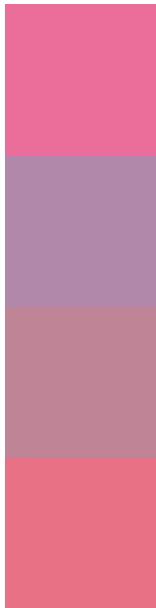
Color vision deficiency is a very complex topic, and I could not describe the different causes any better than Wikipedia does, so if you want to learn more, you should check out their [article about color blindness](#).

## Dichromacy





# Trichromacy



**Original Color**  
4293553562

**Protanomaly**  
4289824682

**Deuteranomaly**  
4290741654

**Tritanomaly**  
4293423494

# Monochromacy



**Original Color**  
4293553562

**Achromatopsia**  
4288190616

**Achromatomaly**  
4290152601

# CSS Examples

## Text

The CSS property to change the color of the text to Android 4293553562 is called "color". The color property can be set on classes, ids or directly on the HTML element.

This example shows how text in the color `rgb(234, 109, 154)` looks like.

```
.text, #text, p{  
    color:rgb(234, 109, 154)  
}
```

If you want to add a text shadow in that color use the text-shadow property, you can generate a text shadow directly with our [CSS Text Shadow Generator](#).

Here you see how black text with a 4 pixel rgb(234, 109, 154) colored shadow looks like.

```
.shadow{ text-shadow: 4px 4px 2px rgb(234, 109, 154) }
```

## Border

The CSS property to change the border of an element to Android 4293553562 is called "border". The border property can be set on classes, ids or directly on the HTML element.

This example shows the color as border, it can be applied via the CSS property "border" or "border-color".

```
.border, #border, table{ border:4px solid rgb(234, 109, 154) }
```

If only the border color should be changed use the property border-color.

```
.border{ border-color:rgb(234, 109, 154) }
```

If you want to add a box shadow in that color use:

Here you see how a box with a 4 pixel rgb(234, 109, 154) colored shadow looks like.

```
.boxshadow{ -moz-box-shadow:4px 4px 4px  
4px rgb(234, 109, 154); -webkit-box-  
shadow:4px 4px 4px 4px rgb(234, 109, 154);  
box-shadow:4px 4px 4px 4px rgb(234, 109,  
154) }
```

# Background

The CSS property to change the background color of an element to Android 4293553562 is called "background". The background property can be set on classes, ids or directly on the HTML element.

```
.background, #background, body{  
background: rgb(234, 109, 154) }
```

If only the background color should be changed can be used:

```
.background{ background-color: rgb(234,  
109, 154) }
```

This example shows the color as background, it is applied via the CSS property "background".

To optimize and compress your CSS code, you can use our [online CSS compressor and optimizer](#) based on csstidy. If you want to create a linear or radial gradient as background or border, check our [CSS Gradient Generator](#).



Hey! You found this booklet interesting? Support Converting Colors with the new Membership Option!

The pro membership hides all ads, plus gives you double the colors in the color bucket, and more awesome pro features!

**[Learn more, Memberships starting at \\$2.50/m!](#)**

**Follow me  
on Twitter!**

@ConvertingColor