

Converting Colors

Android(4293555333)

Have a look what the booklet for
Android(4293555333) contains.

Android(4293555333)	3
<i>Conversions</i>	4
<i>Details</i>	6
<i>Harmonies</i>	11
<i>Previews</i>	23
<i>Color Blindness Simulation</i>	26
<i>CSS Examples</i>	29

Color

Android(4293555333)

Conversions

Conversions Part 1

Format	Color
Hex	EA7485
RGB	234, 116, 133
RGB Percent	92%, 45%, 52%
CMY	0.0824, 0.5451, 0.4784
CMYK	0.00, 0.50, 0.43, 0.08
HSL	351°, 74%, 69%
HSV	351°, 50%, 92%
XYZ	44.4107, 31.6767, 25.9638
YIQ	153.2200, 64.8710, 30.3030

Conversions

Conversions Part 2

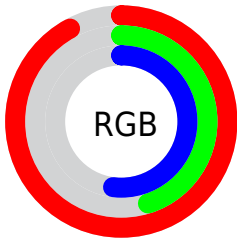
Format	Color
R_{YB}	234, 116, 133
Decimal	15365253
CIE _{Lab}	63.07, 47.15, 12.31
CIE _{LCh}	63, 48.731, 14.636
Yxy	31.6767, 0.4352, 0.3104
Android (android.graphics.Color)	4293555333 (0xFFEA7485)
YUV	153.2200, -9.9685, 70.8441
Hunter-Lab	56.2820, 42.3563, 12.0460

Details

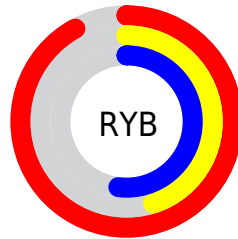
The Android color `4293555333` is a light color, and the websafe version is hex `CC6666`. A complement of this color would be `4285852377`, and the grayscale version is `4288256409`.

A 20% lighter version of the original color is `4294945722`, and `4289609556` is the 20% darker color. If you saturate the color by 10%, you get `4293549425`, and if you desaturate by 10%, it is `4293561241`.

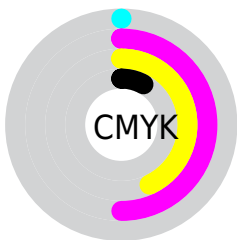
Distribution



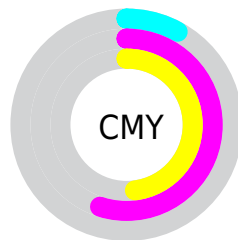
- Red (92%)
- Green (45%)
- Blue (52%)



- Red (92%)
- Yellow (45%)
- Blue (52%)



- Cyan (0%)
- Magenta (50%)
- Yellow (43%)
- Black (8%)



- Cyan (8%)
- Magenta (55%)
- Yellow (48%)

Brightness & Saturation Gradients


These gradients show how the Android color 4293555333 changes by changing the brightness by 10 percent. The first figure shows a shift by +10% for each color and the second figure -10%.

Similar to the brightness gradients but the following saturation gradients show a change of the Android color 4293555333 by changing the saturation by 10% instead.

 4293555333

 4293555333

4294967295

 4291582316

 4294945722

 4289609556

 4294952918

 4287701821

 4294960370

 4285857831

 4283957267

 4282253313

 4280221697

 4278190080

 4293555333

 4293555333

 4293549425

 4293561241

 4293543261

 4293567405

 4293537353

 4293573313

 4293531189

 4293579477

 4293525538

 4293585385

 4293591037

 4293591039

Harmonies

Analogous

The Analogous color harmony consists of three colors that are next to each other on the color wheel.



4292704177



4293555333



4292902494

Triad

The Triadic color harmony groups three colors that are evenly spaced from another and form a triangle on the color wheel.



429355333



4285376344



4278232300

Complementary

The Complementary color scheme is a pair of colors which are on the opposite of each other on the color wheel.



429355333



4285852377

Split Complementary

Split-complementary colors differ from the complementary color scheme. The scheme consists of three colors, the original color and two neighbors of the complement color.



4278234324



4293555333



4280003968

Square

The Square scheme is like the rectangle color scheme, but the four colors are evenly spaced on the color wheel.



429355333



4288519489



4278235053



4285896428

Rectangle

The Rectangle color scheme consists of four colors that form a rectangle on the color wheel.



4293555333



4291791178



4278235053



4278233062

Sweetspot

The Sweet Spot groups the original color and five complimentary colors.



4293555333



4294957534



4292375786



4286605676



4278190080



4286611584

Same Dimension

The Same Dimension uses a secret algorithm to generate beautiful new colors.



4293555333



4294927226



4293565812



4285885035



4290052122



4281729032

Inverse Universe

The Inverse Universe completely reimagines the original color for something new.



4293555333



4294927226



4285841898



4285885035



4290052122



4281729032

Previews

White Background



This preview shows how the Android color 4293555333 looks on a white background.

Color Contrast Check

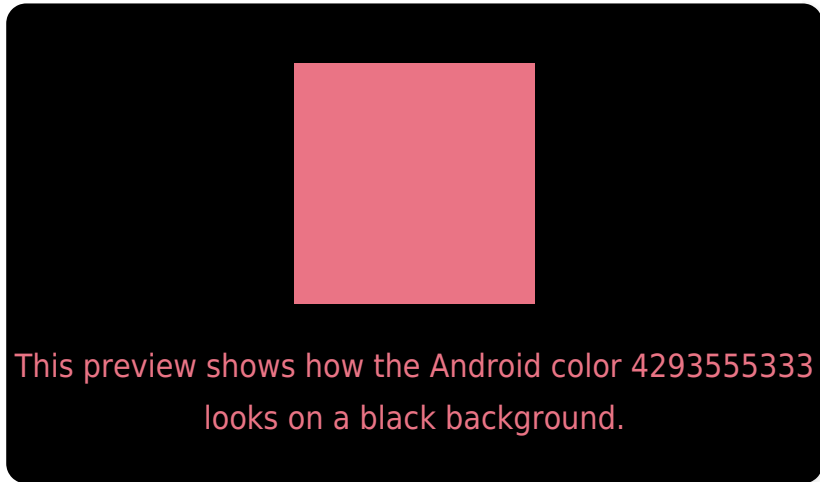
Large Text (above 18pt) WCAG AA × Fail

Any Text WCAG AA × Fail

Large Text (above 18pt) WCAG AAA × Fail

Any Text WCAG AAA × Fail

Black Background



Color Contrast Check

Large Text (above 18pt) WCAG AA ✓ Pass

Any Text WCAG AA ✓ Pass

Large Text (above 18pt) WCAG AAA ✓ Pass

Any Text WCAG AAA ✓ Pass

If you want to check with other color combinations, try the [Color Contrast Checker](#).

Android 4293555333 Background



This preview shows how black text looks on a background with the Android color 4293555333.



This preview shows how white text looks on a background with the Android color 4293555333.

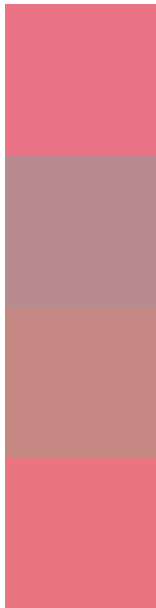
Color Blindness Simulation

Color vision deficiency is a very complex topic, and I could not describe the different causes any better than Wikipedia does, so if you want to learn more, you should check out their [article about color blindness](#).

Dichromacy



Trichromacy



Original Color
4293555333

Protanomaly
4290284433

Deuteranomaly
4291201154

Tritanomaly
4293490049

Monochromacy



Original Color
4293555333

Achromatopsia
4288256409

Achromatomaly
4290153618

CSS Examples

Text

The CSS property to change the color of the text to Android 4293555333 is called "color". The color property can be set on classes, ids or directly on the HTML element.

This example shows how text in the color `rgb(234, 116, 133)` looks like.

```
.text, #text, p{  
    color:rgb(234, 116, 133)  
}
```

If you want to add a text shadow in that color use the text-shadow property, you can generate a text shadow directly with our [CSS Text Shadow Generator](#).

Here you see how black text with a 4 pixel rgb(234, 116, 133) colored shadow looks like.

```
.shadow{ text-shadow: 4px 4px 2px rgb(234, 116, 133) }
```

Border

The CSS property to change the border of an element to Android 4293555333 is called "border". The border property can be set on classes, ids or directly on the HTML element.

This example shows the color as border, it can be applied via the CSS property "border" or "border-color".

```
.border, #border, table{ border:4px solid rgb(234, 116, 133) }
```

If only the border color should be changed use the property `border-color`.

```
.border{ border-color:rgb(234, 116, 133) }
```

If you want to add a box shadow in that color use:

Here you see how a box with a 4 pixel `rgb(234, 116, 133)` colored shadow looks like.

```
.boxshadow{ -moz-box-shadow:4px 4px 4px  
4px rgb(234, 116, 133); -webkit-box-  
shadow:4px 4px 4px 4px rgb(234, 116, 133);  
box-shadow:4px 4px 4px 4px rgb(234, 116,  
133) }
```

Background

The CSS property to change the background color of an element to Android 4293555333 is called "background". The background property can be set on classes, ids or directly on the HTML element.

```
.background, #background, body{  
background: rgb(234, 116, 133) }
```

If only the background color should be changed can be used:

```
.background{ background-color: rgb(234,  
116, 133) }
```

This example shows the color as background, it is applied via the CSS property "background".

To optimize and compress your CSS code, you can use our [online CSS compressor and optimizer](#) based on csstidy. If you want to create a linear or radial gradient as background or border, check our [CSS Gradient Generator](#).

Hey! You found this booklet interesting? Support Converting Colors with the new Membership Option!

The pro membership hides all ads, plus gives you double the colors in the color bucket, and more awesome pro features!

[Learn more, Memberships starting at \\$2.50/m!](#)

**Follow me
on Twitter!**

@ConvertingColor