

Converting Colors

Android(4293560989)

Have a look what the booklet for
Android(4293560989) contains.

Android(4293560989)	3
<i>Conversions</i>	4
<i>Details</i>	6
<i>Harmonies</i>	11
<i>Previews</i>	23
<i>Color Blindness Simulation</i>	26
<i>CSS Examples</i>	29

Color

Android(4293560989)

Conversions

Conversions Part 1

Format	Color
Hex	EA8A9D
RGB	234, 138, 157
RGB Percent	92%, 54%, 62%
CMY	0.0824, 0.4588, 0.3843
CMYK	0.00, 0.41, 0.33, 0.08
HSL	348°, 70%, 73%
HSV	348°, 41%, 92%
XYZ	49.1060, 38.1037, 36.6649
YIQ	168.8700, 51.1170, 26.2610

Conversions

Conversions Part 2

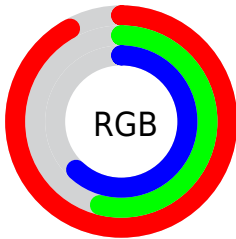
Format	Color
RYB	234, 138, 157
Decimal	15370909
CIELab	68.10, 38.72, 5.85
CIElCh	68, 39.160, 8.595
Yxy	38.1037, 0.3964, 0.3076
Android (android.graphics.Color)	4293560989 (0xFFEA8A9D)
YUV	168.8700, -5.8519, 57.1190
Hunter-Lab	61.7282, 33.9758, 7.9931

Details

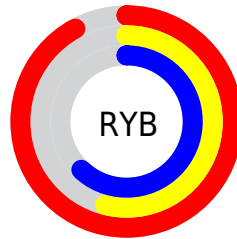
The Android color `4293560989` is a light color, and the websafe version is hex `FF9999`. A complement of this color would be `4287294167`, and the grayscale version is `4289309097`.

A 20% lighter version of the original color is `4294951379`, and `4289746538` is the 20% darker color. If you saturate the color by 10%, you get `4293555082`, and if you desaturate by 10%, it is `4293566896`.

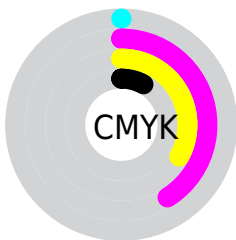
Distribution



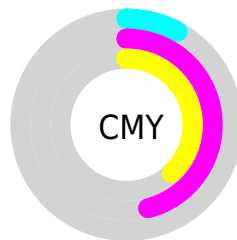
- Red (92%)
- Green (54%)
- Blue (62%)



- Red (92%)
- Yellow (54%)
- Blue (62%)



- Cyan (0%)
- Magenta (41%)
- Yellow (33%)
- Black (8%)



- Cyan (8%)
- Magenta (46%)
- Yellow (38%)

Brightness & Saturation Gradients

These gradients show how the Android color 4293560989 changes by changing the brightness by 10 percent. The first figure shows a shift by +10% for each color and the second figure -10%.

Similar to the brightness gradients but the following saturation gradients show a change of the Android color 4293560989 by changing the saturation by 10% instead.

 4293560989

 4293560989

4294967295

 4291653763

 4294951379

 4289746538

 4294958576

 4287905106

 4294966015

 4286063419

 4284285989

 4282515472

 4281008129

 4278190080

 4293560989

 4293560989

 4293555082

 4293566896

 4293548919

 4293573059

 4293543013

 4293578965

 4293536850

 4293585128

 4293530943

 4293591035

 4293525550

 4293591039

Harmonies

Analogous

The Analogous color harmony consists of three colors that are next to each other on the color wheel.



4292513473



4293560989



4293300348

Triad

The Triadic color harmony groups three colors that are evenly spaced from another and form a triangle on the color wheel.



4293560989



4287476077



4282364391

Complementary

The Complementary color scheme is a pair of colors which are on the opposite of each other on the color wheel.



4293560989



4287294167

Split Complementary

Split-complementary colors differ from the complementary color scheme. The scheme consists of three colors, the original color and two neighbors of the complement color.



4278237137



4293560989



4284528523

Square

The Square scheme is like the rectangle color scheme, but the four colors are evenly spaced on the color wheel.



4293560989



4289963871



4280596911



4286752492

Rectangle

The Rectangle color scheme consists of four colors that form a rectangle on the color wheel.



4293560989



4292515691



4280596911



4280398817

Sweetspot

The Sweet Spot groups the original color and five complimentary colors.



4293560989



4294959334



4292315882



4286606961



4278190080



4286611584

Same Dimension

The Same Dimension uses a secret algorithm to generate beautiful new colors.



4293560989



4294935195



4293568394



4285885036



4290052132



4281729035

Inverse Universe

The Inverse Universe completely reimagines the original color for something new.



4293560989



4294935195



4287286762



4285885036



4290052132



4281729035

Previews

White Background



This preview shows how the Android color 4293560989 looks on a white background.

Color Contrast Check

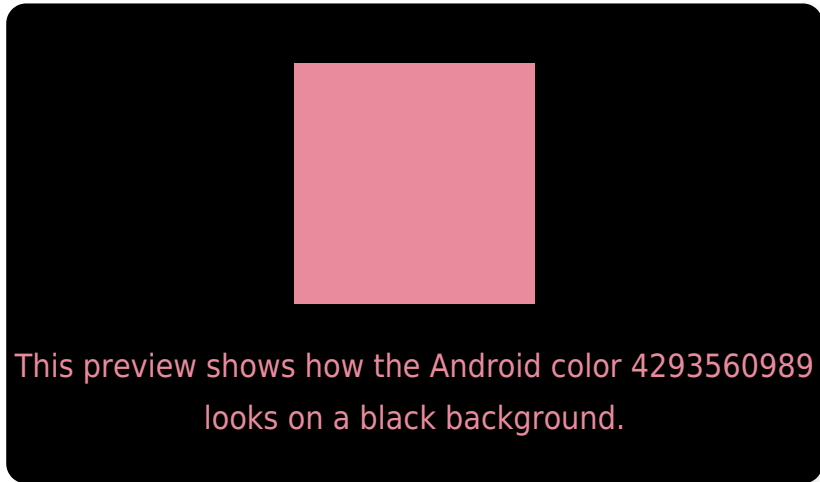
Large Text (above 18pt) WCAG AA × Fail

Any Text WCAG AA × Fail

Large Text (above 18pt) WCAG AAA × Fail

Any Text WCAG AAA × Fail

Black Background



Color Contrast Check

Large Text (above 18pt) WCAG AA ✓ Pass

Any Text WCAG AA ✓ Pass

Large Text (above 18pt) WCAG AAA ✓ Pass

Any Text WCAG AAA ✓ Pass

If you want to check with other color combinations, try the [Color Contrast Checker](#).

Android 4293560989 Background



This preview shows how black text looks on a background with the Android color 4293560989.



This preview shows how white text looks on a background with the Android color 4293560989.

Color Blindness Simulation

Color vision deficiency is a very complex topic, and I could not describe the different causes any better than Wikipedia does, so if you want to learn more, you should check out their [article about color blindness](#).

Dichromacy

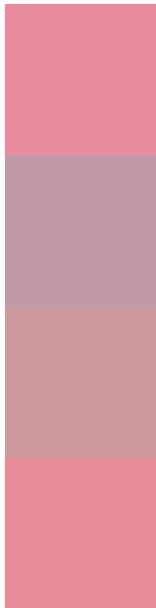


Original Color
4293560989

Protanopia
4289242541

Deuteranopia
4290486681

Trichromacy



Original Color
4293560989

Protanomaly
4290812839

Deuteranomaly
4291598746

Tritanomaly
4293495705

Monochromacy



Original Color
4293560989

Achromatopsia
4289309097

Achromatomaly
4290879141

CSS Examples

Text

The CSS property to change the color of the text to Android 4293560989 is called "color". The color property can be set on classes, ids or directly on the HTML element.

This example shows how text in the color `rgb(234, 138, 157)` looks like.

```
.text, #text, p{  
    color:rgb(234, 138, 157)  
}
```

If you want to add a text shadow in that color use the text-shadow property, you can generate a text shadow directly with our [CSS Text Shadow Generator](#).

Here you see how black text with a 4 pixel rgb(234, 138, 157) colored shadow looks like.

```
.shadow{ text-shadow: 4px 4px 2px rgb(234, 138, 157) }
```

Border

The CSS property to change the border of an element to Android 4293560989 is called "border". The border property can be set on classes, ids or directly on the HTML element.

This example shows the color as border, it can be applied via the CSS property "border" or "border-color".

```
.border, #border, table{ border:4px solid rgb(234, 138, 157) }
```

If only the border color should be changed use the property `border-color`.

```
.border{ border-color:rgb(234, 138, 157) }
```

If you want to add a box shadow in that color use:

Here you see how a box with a 4 pixel `rgb(234, 138, 157)` colored shadow looks like.

```
.boxshadow{ -moz-box-shadow:4px 4px 4px  
4px rgb(234, 138, 157); -webkit-box-  
shadow:4px 4px 4px 4px rgb(234, 138, 157);  
box-shadow:4px 4px 4px 4px rgb(234, 138,  
157) }
```

Background

The CSS property to change the background color of an element to Android 4293560989 is called "background". The background property can be set on classes, ids or directly on the HTML element.

```
.background, #background, body{  
background: rgb(234, 138, 157) }
```

If only the background color should be changed can be used:

```
.background{ background-color: rgb(234,  
138, 157) }
```

This example shows the color as background, it is applied via the CSS property "background".

To optimize and compress your CSS code, you can use our [online CSS compressor and optimizer](#) based on csstidy. If you want to create a linear or radial gradient as background or border, check our [CSS Gradient Generator](#).

Hey! You found this booklet interesting? Support Converting Colors with the new Membership Option!

The pro membership hides all ads, plus gives you double the colors in the color bucket, and more awesome pro features!

[Learn more, Memberships starting at \\$2.50/m!](#)

**Follow me
on Twitter!**

@ConvertingColor