

Converting Colors

Android(4293576370)

Have a look what the booklet for
Android(4293576370) contains.

Android(4293576370)	3
<i>Conversions</i>	4
<i>Details</i>	6
<i>Harmonies</i>	11
<i>Previews</i>	23
<i>Color Blindness Simulation</i>	26
<i>CSS Examples</i>	29

Color

Android(4293576370)

Conversions

Conversions Part 1

Format	Color
Hex	EAC6B2
RGB	234, 198, 178
RGB Percent	92%, 78%, 70%
CMY	0.0824, 0.2235, 0.3020
CMYK	0.00, 0.15, 0.24, 0.08
HSL	21°, 57%, 81%
HSV	21°, 24%, 92%
XYZ	62.1616, 61.0949, 50.6357
YIQ	206.4840, 27.8760, 1.4120

Conversions

Conversions Part 2

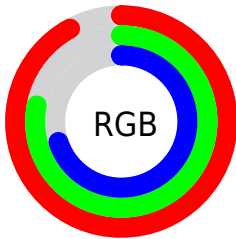
Format	Color
RYB	234, 209, 178
Decimal	15386290
CIELab	82.43, 9.74, 14.76
CIElCh	82, 17.681, 56.565
Yxy	61.0949, 0.3575, 0.3513
Android (android.graphics.Color)	4293576370 (0xFFEAC6B2)
YUV	206.4840, -14.0426, 24.1315
Hunter-Lab	78.1633, 5.1717, 16.3050

Details

The Android color `4293576370` is a light color, and the websafe version is hex `FFCCCC`. A complement of this color would be `4289910506`, and the grayscale version is `4291809231`.

A 20% lighter version of the original color is `4294967274`, and `4289892477` is the 20% darker color. If you saturate the color by 10%, you get `4293572507`, and if you desaturate by 10%, it is `4293580233`.

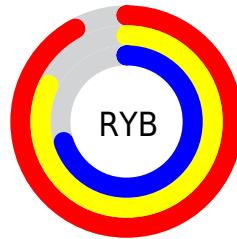
Distribution



Red (92%)

Green (78%)

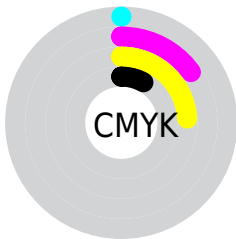
Blue (70%)



Red (92%)

Yellow (82%)

Blue (70%)

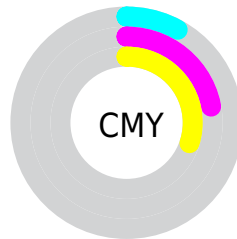


Cyan (0%)

Magenta (15%)

Yellow (24%)

Black (8%)



Cyan (8%)

Magenta (22%)

Yellow (30%)

Brightness & Saturation Gradients


These gradients show how the Android color 4293576370 changes by changing the brightness by 10 percent. The first figure shows a shift by +10% for each color and the second figure -10%.

Similar to the brightness gradients but the following saturation gradients show a change of the Android color 4293576370 by changing the saturation by 10% instead.

 4293576370

 4293576370

4294967295

 4291668887

 4294967274

 4289892477

 4288051044

 4286340684

 4284630582

 4283052064

 4281473802

 4280025344

 4278190080

 4293576370

 4293576370

 4293572507

 4293580233

 4293568643

 4293584097

 4293564780

 4293587960

 4293560916

 4293591039

 4293557053

 4293553190

 4293549326

 4293547008

Harmonies

Analogous

The Analogous color harmony consists of three colors that are next to each other on the color wheel.



4293968575



4293576370



4292660140

Triad

The Triadic color harmony groups three colors that are evenly spaced from another and form a triangle on the color wheel.



4293576370



4289255370



4291742443

Complementary

The Complementary color scheme is a pair of colors which are on the opposite of each other on the color wheel.



4293576370



4289910506

Split Complementary

Split-complementary colors differ from the complementary color scheme. The scheme consists of three colors, the original color and two neighbors of the complement color.



4290367470



4293576370



4288861915

Square

The Square scheme is like the rectangle color scheme, but the four colors are evenly spaced on the color wheel.



4293576370



4290237882



4289254632



4292986336

Rectangle

The Rectangle color scheme consists of four colors that form a rectangle on the color wheel.



4293576370



4291940269



4289254632



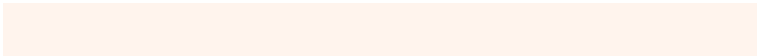
4291283949

Sweetspot

The Sweet Spot groups the original color and five complimentary colors.



4293576370



4294964461



4293571286



4286609781



4278190080



4286611584

Same Dimension

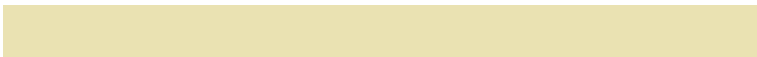
The Same Dimension uses a secret algorithm to generate beautiful new colors.



4293576370



4294954933



4293583538



4285886058



4290068736



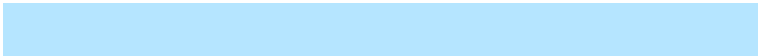
4281733888

Inverse Universe

The Inverse Universe completely reimagines the original color for something new.



4289910506



4290110975



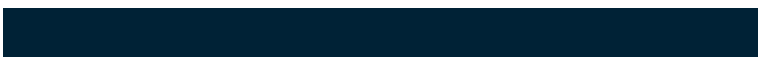
4289903338



4285165941



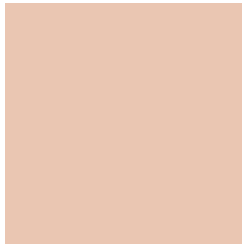
4278219957



4278198838

Previews

White Background



This preview shows how the Android color 4293576370 looks on a white background.

Color Contrast Check

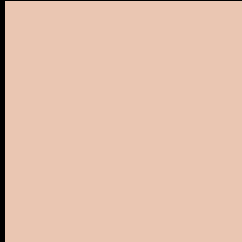
Large Text (above 18pt) WCAG AA × Fail

Any Text WCAG AA × Fail

Large Text (above 18pt) WCAG AAA × Fail

Any Text WCAG AAA × Fail

Black Background



This preview shows how the Android color 4293576370 looks on a black background.

Color Contrast Check

Large Text (above 18pt) WCAG AA ✓ Pass

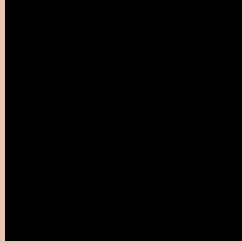
Any Text WCAG AA ✓ Pass

Large Text (above 18pt) WCAG AAA ✓ Pass

Any Text WCAG AAA ✓ Pass

If you want to check with other color combinations, try the [Color Contrast Checker](#).

Android 4293576370 Background



This preview shows how black text looks on a background with the Android color 4293576370.




This preview shows how white text looks on a background with the Android color 4293576370.

Color Blindness Simulation

Color vision deficiency is a very complex topic, and I could not describe the different causes any better than Wikipedia does, so if you want to learn more, you should check out their [article about color blindness](#).

Dichromacy

	Original Color 4293576370
	Protanopia 4292332981
	Deuteranopia 4293641906



Tritanopia
4293837521

Trichromacy



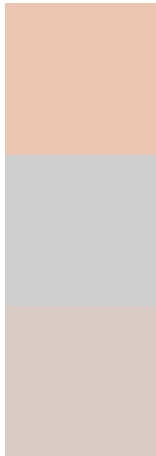
Original Color
4293576370

Protanomaly
4292790964

Deuteranomaly
4293641906

Tritanomaly
4293772230

Monochromacy



Original Color
4293576370

Achromatopsia
4291743438

Achromatomaly
4292398020

CSS Examples

Text

The CSS property to change the color of the text to Android 4293576370 is called "color". The color property can be set on classes, ids or directly on the HTML element.

This example shows how text in the color `rgb(234, 198, 178)` looks like.

```
.text, #text, p{  
    color:rgb(234, 198, 178)  
}
```

If you want to add a text shadow in that color use the text-shadow property, you can generate a text shadow directly with our [CSS Text Shadow Generator](#).

Here you see how black text with a 4 pixel rgb(234, 198, 178) colored shadow looks like.

```
.shadow{ text-shadow: 4px 4px 2px rgb(234, 198, 178) }
```

Border

The CSS property to change the border of an element to Android 4293576370 is called "border". The border property can be set on classes, ids or directly on the HTML element.

This example shows the color as border, it can be applied via the CSS property "border" or "border-color".

```
.border, #border, table{ border:4px solid rgb(234, 198, 178) }
```

If only the border color should be changed use the property border-color.

```
.border{ border-color:rgb(234, 198, 178) }
```

If you want to add a box shadow in that color use:

Here you see how a box with a 4 pixel rgb(234, 198, 178) colored shadow looks like.

```
.boxshadow{ -moz-box-shadow:4px 4px 4px  
4px rgb(234, 198, 178); -webkit-box-  
shadow:4px 4px 4px 4px rgb(234, 198, 178);  
box-shadow:4px 4px 4px 4px rgb(234, 198,  
178) }
```

Background

The CSS property to change the background color of an element to Android 4293576370 is called "background". The background property can be set on classes, ids or directly on the HTML element.

```
.background, #background, body{  
background: rgb(234, 198, 178) }
```

If only the background color should be changed can be used:

```
.background{ background-color: rgb(234,  
198, 178) }
```

This example shows the color as background, it is applied via the CSS property "background".

To optimize and compress your CSS code, you can use our [online CSS compressor and optimizer](#) based on csstidy. If you want to create a linear or radial gradient as background or border, check our [CSS Gradient Generator](#).

Hey! You found this booklet interesting? Support Converting Colors with the new Membership Option!

The pro membership hides all ads, plus gives you double the colors in the color bucket, and more awesome pro features!

[Learn more, Memberships starting at \\$2.50/m!](#)

**Follow me
on Twitter!**

@ConvertingColor