

Converting Colors

Android(4293577912)

Have a look what the booklet for
Android(4293577912) contains.

Android(4293577912)	3
<i>Conversions</i>	4
<i>Details</i>	6
<i>Harmonies</i>	11
<i>Previews</i>	23
<i>Color Blindness Simulation</i>	26
<i>CSS Examples</i>	29

Color

Android(4293577912)

Conversions

Conversions Part 1

Format	Color
Hex	EACCB8
RGB	234, 204, 184
RGB Percent	92%, 80%, 72%
CMY	0.0824, 0.2000, 0.2784
CMYK	0.00, 0.13, 0.21, 0.08
HSL	24°, 54%, 82%
HSV	24°, 21%, 92%
XYZ	64.1763, 64.1388, 54.3450
YIQ	210.6900, 24.3000, 0.1400

Conversions

Conversions Part 2

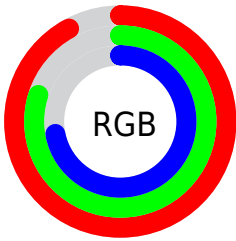
Format	Color
RYB	234, 217, 184
Decimal	15387832
CIELab	84.04, 7.45, 13.83
CIElCh	84, 15.711, 61.698
Yxy	64.1388, 0.3513, 0.3511
Android (android.graphics.Color)	4293577912 (0xFFEACCB8)
YUV	210.6900, -13.1582, 20.4429
Hunter-Lab	80.0867, 2.8865, 15.8279

Details

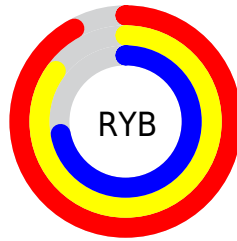
The Android color `4293577912` is a light color, and the websafe version is hex `FFCCCC`. A complement of this color would be `4290303722`, and the grayscale version is `4292072403`.

A 20% lighter version of the original color is `4294967280`, and `4289894019` is the 20% darker color. If you saturate the color by 10%, you get `4293574305`, and if you desaturate by 10%, it is `4293581519`.

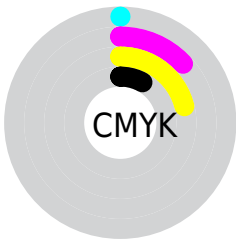
Distribution



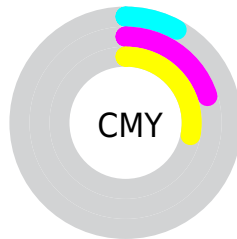
- Red (92%)
- Green (80%)
- Blue (72%)



- Red (92%)
- Yellow (85%)
- Blue (72%)



- Cyan (0%)
- Magenta (13%)
- Yellow (21%)
- Black (8%)



- Cyan (8%)
- Magenta (20%)
- Yellow (28%)

Brightness & Saturation Gradients

These gradients show how the Android color 4293577912 changes by changing the brightness by 10 percent. The first figure shows a shift by +10% for each color and the second figure -10%.

Similar to the brightness gradients but the following saturation gradients show a change of the Android color 4293577912 by changing the saturation by 10% instead.

 4293577912

 4293577912

4294967295

 4291735965

 4294967280

 4289894019

 4288117866

 4286341970

 4284697402

 4283053349

 4281540368

 4280158208

 4278190080

 4293577912

 4293577912

 4293574305

 4293581519

 4293570697

 4293585127

 4293567090

 4293588734

 4293563482

 4293591039

 4293559875

 4293556268

 4293552660

 4293549568

Harmonies

Analogous

The Analogous color harmony consists of three colors that are next to each other on the color wheel.



4294035651



4293577912



4292727220

Triad

The Triadic color harmony groups three colors that are evenly spaced from another and form a triangle on the color wheel.



4293577912



4289714898



4292267755

Complementary

The Complementary color scheme is a pair of colors which are on the opposite of each other on the color wheel.



4293577912



4290303722

Split Complementary

Split-complementary colors differ from the complementary color scheme. The scheme consists of three colors, the original color and two neighbors of the complement color.



4291023855



4293577912



4289518305

Square

The Square scheme is like the rectangle color scheme, but the four colors are evenly spaced on the color wheel.



4293577912



4290566595



4289976299



4293315040

Rectangle

The Rectangle color scheme consists of four colors that form a rectangle on the color wheel.



4293577912



4292007094



4289976299



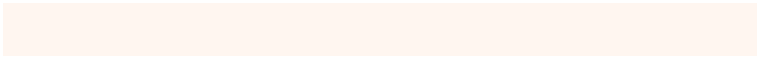
4291809261

Sweetspot

The Sweet Spot groups the original color and five complimentary colors.



4293577912



4294964976



4293572822



4286610039



4278190080



4286611584

Same Dimension

The Same Dimension uses a secret algorithm to generate beautiful new colors.



4293577912



4294956989



4293584312



4285886058



4290070528



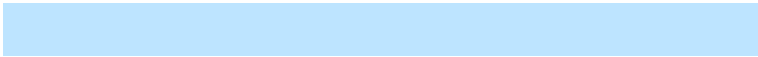
4281734400

Inverse Universe

The Inverse Universe completely reimagines the original color for something new.



4290303722



4290635007



4290297322



4285165941



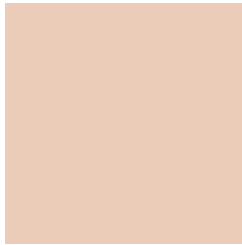
4278218165



4278198326

Previews

White Background



This preview shows how the Android color 4293577912 looks on a white background.

Color Contrast Check

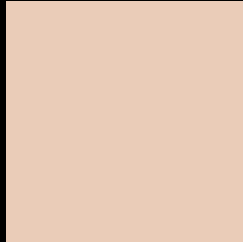
Large Text (above 18pt) WCAG AA × Fail

Any Text WCAG AA × Fail

Large Text (above 18pt) WCAG AAA × Fail

Any Text WCAG AAA × Fail

Black Background



This preview shows how the Android color 4293577912 looks on a black background.

Color Contrast Check

Large Text (above 18pt) WCAG AA ✓ Pass

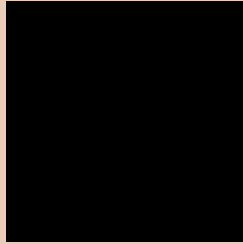
Any Text WCAG AA ✓ Pass

Large Text (above 18pt) WCAG AAA ✓ Pass

Any Text WCAG AAA ✓ Pass

If you want to check with other color combinations, try the [Color Contrast Checker](#).

Android 4293577912 Background



This preview shows how black text looks on a background with the Android color 4293577912.



This preview shows how white text looks on a background with the Android color 4293577912.

Color Blindness Simulation

Color vision deficiency is a very complex topic, and I could not describe the different causes any better than Wikipedia does, so if you want to learn more, you should check out their [article about color blindness](#).

Dichromacy



Original Color
4293577912

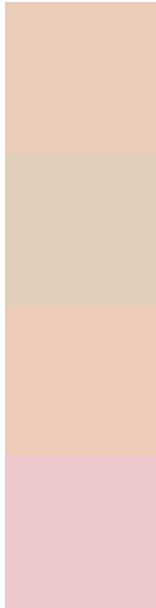
Protanopia
4292596155

Deuteranopia
4293905080



Tritanopia
4293838807

Trichromacy



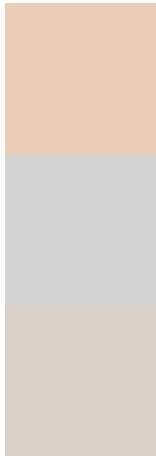
Original Color
4293577912

Protanomaly
4292923322

Deuteranomaly
4293774264

Tritanomaly
4293773772

Monochromacy



Original Color
4293577912

Achromatopsia
4292072403

Achromatomaly
4292595913

CSS Examples

Text

The CSS property to change the color of the text to Android 4293577912 is called "color". The color property can be set on classes, ids or directly on the HTML element.

This example shows how text in the color `rgb(234, 204, 184)` looks like.

```
.text, #text, p{  
    color:rgb(234, 204, 184)  
}
```

If you want to add a text shadow in that color use the text-shadow property, you can generate a text shadow directly with our [CSS Text Shadow Generator](#).

Here you see how black text with a 4 pixel rgb(234, 204, 184) colored shadow looks like.

```
.shadow{ text-shadow: 4px 4px 2px rgb(234, 204, 184) }
```

Border

The CSS property to change the border of an element to Android 4293577912 is called "border". The border property can be set on classes, ids or directly on the HTML element.

This example shows the color as border, it can be applied via the CSS property "border" or "border-color".

```
.border, #border, table{ border:4px solid rgb(234, 204, 184) }
```

If only the border color should be changed use the property `border-color`.

```
.border{ border-color:rgb(234, 204, 184) }
```

If you want to add a box shadow in that color use:

Here you see how a box with a 4 pixel `rgb(234, 204, 184)` colored shadow looks like.

```
.boxshadow{ -moz-box-shadow:4px 4px 4px  
4px rgb(234, 204, 184); -webkit-box-  
shadow:4px 4px 4px 4px rgb(234, 204, 184);  
box-shadow:4px 4px 4px 4px rgb(234, 204,  
184) }
```

Background

The CSS property to change the background color of an element to Android 4293577912 is called "background". The background property can be set on classes, ids or directly on the HTML element.

```
.background, #background, body{  
background: rgb(234, 204, 184) }
```

If only the background color should be changed can be used:

```
.background{ background-color: rgb(234,  
204, 184) }
```

This example shows the color as background, it is applied via the CSS property "background".

To optimize and compress your CSS code, you can use our [online CSS compressor and optimizer](#) based on csstidy. If you want to create a linear or radial gradient as background or border, check our [CSS Gradient Generator](#).

Hey! You found this booklet interesting? Support Converting Colors with the new Membership Option!

The pro membership hides all ads, plus gives you double the colors in the color bucket, and more awesome pro features!

[Learn more, Memberships starting at \\$2.50/m!](#)

**Follow me
on Twitter!**

@ConvertingColor