

Converting Colors

Android(4293579201)

Have a look what the booklet for
Android(4293579201) contains.

Android(4293579201)	3
<i>Conversions</i>	4
<i>Details</i>	6
<i>Harmonies</i>	11
<i>Previews</i>	23
<i>Color Blindness Simulation</i>	26
<i>CSS Examples</i>	29

Color

Android(4293579201)

Conversions

Conversions Part 1

Format	Color
Hex	EAD1C1
RGB	234, 209, 193
RGB Percent	92%, 82%, 76%
CMY	0.0824, 0.1804, 0.2431
CMYK	0.00, 0.11, 0.18, 0.08
HSL	23°, 49%, 84%
HSV	23°, 18%, 92%
XYZ	66.3578, 66.9436, 59.8761
YIQ	214.6510, 20.0360, 0.3240

Conversions

Conversions Part 2

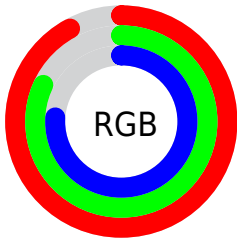
Format	Color
R_{YB}	234, 219, 193
Decimal	15389121
CIE _{Lab}	85.48, 6.17, 11.10
CIE _{LCh}	85, 12.700, 60.945
Yxy	66.9436, 0.3435, 0.3465
Android (android.graphics.Color)	4293579201 (0xFFEAD1C1)
YUV	214.6510, -10.6739, 16.9691
Hunter-Lab	81.8191, 1.5856, 13.8843

Details

The Android color `4293579201` is a light color, and the websafe version is hex `FFCCCC`. A complement of this color would be `4290894570`, and the grayscale version is `4292335575`.

A 20% lighter version of the original color is `4294967289`, and `4289895307` is the 20% darker color. If you saturate the color by 10%, you get `4293575594`, and if you desaturate by 10%, it is `4293582808`.

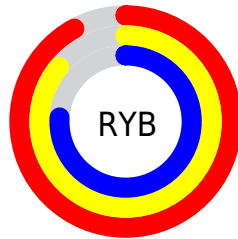
Distribution



Red (92%)

Green (82%)

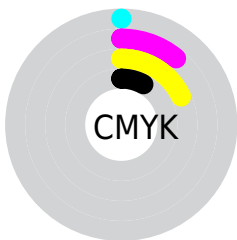
Blue (76%)



Red (92%)

Yellow (86%)

Blue (76%)

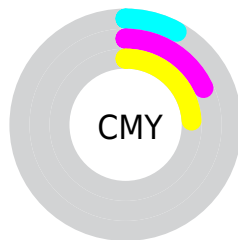


Cyan (0%)

Magenta (11%)

Yellow (18%)

Black (8%)



Cyan (8%)

Magenta (18%)

Yellow (24%)

Brightness & Saturation Gradients

These gradients show how the Android color 4293579201 changes by changing the brightness by 10 percent. The first figure shows a shift by +10% for each color and the second figure -10%.

Similar to the brightness gradients but the following saturation gradients show a change of the Android color 4293579201 by changing the saturation by 10% instead.



4293579201



4293579201

4294967295



4291736998



4294967289



4289895307



4288119154



4286408793



4284763970



4283119916



4281606935



4280290816



4278190080

 4293579201

 4293579201

 4293575594

 4293582808

 4293571730

 4293586672

 4293568123

 4293590271

 4293564515

 4293591039

 4293560908

 4293557045

 4293553437

 4293549830

 4293548800

Harmonies

Analogous

The Analogous color harmony consists of three colors that are next to each other on the color wheel.



4293906122



4293579201



4292859326

Triad

The Triadic color harmony groups three colors that are evenly spaced from another and form a triangle on the color wheel.



4293579201



4290436566



4292465386

Complementary

The Complementary color scheme is a pair of colors which are on the opposite of each other on the color wheel.



4293579201



4290894570

Split Complementary

Split-complementary colors differ from the complementary color scheme. The scheme consists of three colors, the original color and two neighbors of the complement color.



4291483373



4293579201



4290305249

Square

The Square scheme is like the rectangle color scheme, but the four colors are evenly spaced on the color wheel.



4293579201



4291091658



4290632426



4293316577

Rectangle

The Rectangle color scheme consists of four colors that form a rectangle on the color wheel.



4293579201



4292270015



4290632426



4292138220

Sweetspot

The Sweet Spot groups the original color and five complimentary colors.



4293579201



4294965234



4293575130



4286610296



4278190080



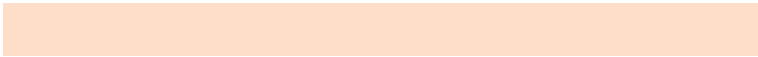
4286611584

Same Dimension

The Same Dimension uses a secret algorithm to generate beautiful new colors.



4293579201



4294958793



4293584321



4285886058



4290070272



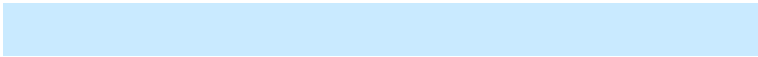
4281734400

Inverse Universe

The Inverse Universe completely reimagines the original color for something new.



4290894570



4291422975



4290889450



4285165941



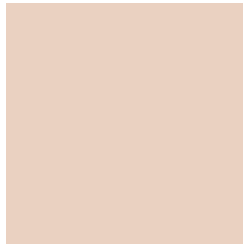
4278218421



4278198582

Previews

White Background



This preview shows how the Android color 4293579201 looks on a white background.

Color Contrast Check

Large Text (above 18pt) WCAG AA × Fail

Any Text WCAG AA × Fail

Large Text (above 18pt) WCAG AAA × Fail

Any Text WCAG AAA × Fail

Black Background



This preview shows how the Android color 4293579201 looks on a black background.

Color Contrast Check

Large Text (above 18pt) WCAG AA ✓ Pass

Any Text WCAG AA ✓ Pass

Large Text (above 18pt) WCAG AAA ✓ Pass

Any Text WCAG AAA ✓ Pass

If you want to check with other color combinations, try the [Color Contrast Checker](#).

Android 4293579201 Background



This preview shows how black text looks on a background with the Android color 4293579201.



This preview shows how white text looks on a background with the Android color 4293579201.

Color Blindness Simulation

Color vision deficiency is a very complex topic, and I could not describe the different causes any better than Wikipedia does, so if you want to learn more, you should check out their [article about color blindness](#).


Dichromacy



Original Color
4293579201

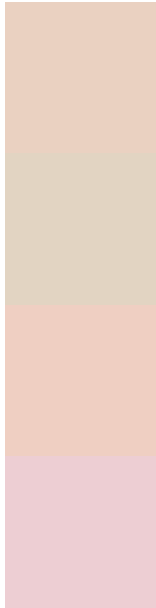
Protanopia
4292793795

Deuteranopia
4294102722



Tritanopia
4293840349

Trichromacy



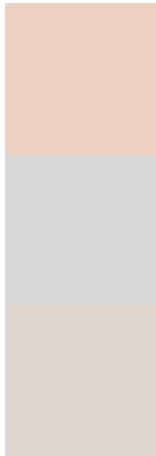
Original Color
4293579201

Protanomaly
4293055682

Deuteranomaly
4293906370

Tritanomaly
4293775059

Monochromacy



Original Color
4293579201

Achromatopsia
4292335575

Achromatomaly
4292793807

CSS Examples

Text

The CSS property to change the color of the text to Android 4293579201 is called "color". The color property can be set on classes, ids or directly on the HTML element.

This example shows how text in the color `rgb(234, 209, 193)` looks like.

```
.text, #text, p{  
    color:rgb(234, 209, 193)  
}
```

If you want to add a text shadow in that color use the text-shadow property, you can generate a text shadow directly with our [CSS Text Shadow Generator](#).

Here you see how black text with a 4 pixel rgb(234, 209, 193) colored shadow looks like.

```
.shadow{ text-shadow: 4px 4px 2px rgb(234, 209, 193) }
```

Border

The CSS property to change the border of an element to Android 4293579201 is called "border". The border property can be set on classes, ids or directly on the HTML element.

This example shows the color as border, it can be applied via the CSS property "border" or "border-color".

```
.border, #border, table{ border:4px solid rgb(234, 209, 193) }
```

If only the border color should be changed use the property `border-color`.

```
.border{ border-color:rgb(234, 209, 193) }
```

If you want to add a box shadow in that color use:

Here you see how a box with a 4 pixel `rgb(234, 209, 193)` colored shadow looks like.

```
.boxshadow{ -moz-box-shadow:4px 4px 4px  
4px rgb(234, 209, 193); -webkit-box-  
shadow:4px 4px 4px 4px rgb(234, 209, 193);  
box-shadow:4px 4px 4px 4px rgb(234, 209,  
193) }
```

Background

The CSS property to change the background color of an element to Android 4293579201 is called "background". The background property can be set on classes, ids or directly on the HTML element.

```
.background, #background, body{  
background: rgb(234, 209, 193) }
```

If only the background color should be changed can be used:

```
.background{ background-color: rgb(234,  
209, 193) }
```

This example shows the color as background, it is applied via the CSS property "background".

To optimize and compress your CSS code, you can use our [online CSS compressor and optimizer](#) based on csstidy. If you want to create a linear or radial gradient as background or border, check our [CSS Gradient Generator](#).

Hey! You found this booklet interesting? Support Converting Colors with the new Membership Option!

The pro membership hides all ads, plus gives you double the colors in the color bucket, and more awesome pro features!

[Learn more, Memberships starting at \\$2.50/m!](#)

**Follow me
on Twitter!**

@ConvertingColor