

# Converting Colors

Android(4293579206)

Have a look what the booklet for  
Android(4293579206) contains.

<b>Android(4293579206)</b> .....	3
<b><i>Conversions</i></b> .....	4
<b><i>Details</i></b> .....	6
<b><i>Harmonies</i></b> .....	11
<b><i>Previews</i></b> .....	23
<b><i>Color Blindness Simulation</i></b> .....	26
<b><i>CSS Examples</i></b> .....	29

# **Color**

**Android(4293579206)**

# Conversions

## Conversions Part 1

Format	Color
Hex	EAD1C6
RGB	234, 209, 198
RGB Percent	92%, 82%, 78%
CMY	0.0824, 0.1804, 0.2235
CMYK	0.00, 0.11, 0.15, 0.08
HSL	18°, 46%, 85%
HSV	18°, 15%, 92%
XYZ	66.9252, 67.1706, 62.8640
YIQ	215.2210, 18.4310, 1.8790

# Conversions

## Conversions Part 2

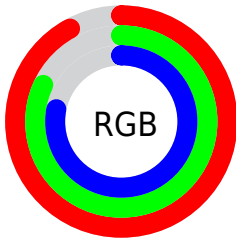
<b>Format</b>	<b>Color</b>
R <sub>Y</sub> B	234, 214, 198
Decimal	15389126
CIE Lab	85.59, 6.93, 8.62
CIE LCh	86, 11.062, 51.177
Yxy	67.1706, 0.3398, 0.3410
Android (android.graphics.Color)	4293579206 (0xFFEAD1C6)
YUV	215.2210, -8.4900, 16.4692
Hunter-Lab	81.9577, 2.3341, 11.8932

# Details

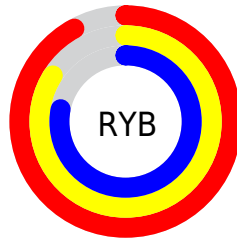
The Android color `4293579206` is a light color, and the websafe version is hex `FFCCCC`. A complement of this color would be `4291223530`, and the grayscale version is `4292335575`.

A 20% lighter version of the original color is `4294967295`, and `4289895312` is the 20% darker color. If you saturate the color by 10%, you get `4293575087`, and if you desaturate by 10%, it is `4293583325`.

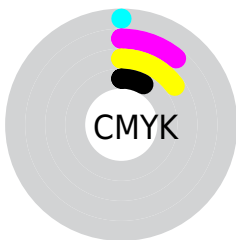
# Distribution



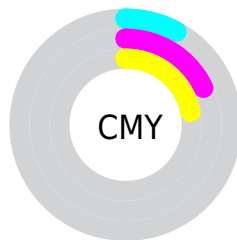
- Red (92%)
- Green (82%)
- Blue (78%)



- Red (92%)
- Yellow (84%)
- Blue (78%)



- Cyan (0%)
- Magenta (11%)
- Yellow (15%)
- Black (8%)



- Cyan (8%)
- Magenta (18%)
- Yellow (22%)

# Brightness & Saturation Gradients

These gradients show how the Android color 4293579206 changes by changing the brightness by 10 percent. The first figure shows a shift by +10% for each color and the second figure -10%.

Similar to the brightness gradients but the following saturation gradients show a change of the Android color 4293579206 by changing the saturation by 10% instead.



 4293579206

 4293579206

4294967295

 4291737003

 4289895312

 4288119159

 4286408798

 4284763974

 4283119920

 4281606939

 4280290816

 4278190080

 4293579206

 4293579206

 4293575087

 4293583325

 4293570967

 4293587701

 4293566592

 4293591039

 4293562472

 4293558353

 4293553978

 4293549858

 4293545739

 4293543680

# Harmonies

## Analogous

The Analogous color harmony consists of three colors that are next to each other on the color wheel.



4293775311



4293579206



4293055681

# Triad

The Triadic color harmony groups three colors that are evenly spaced from another and form a triangle on the color wheel.



4293579206



4290895058



4292138217

# Complementary

The Complementary color scheme is a pair of colors which are on the opposite of each other on the color wheel.



4293579206



4291223530

# Split Complementary

Split-complementary colors differ from the complementary color scheme. The scheme consists of three colors, the original color and two neighbors of the complement color.



4291352810



4293579206



4290567389

# Square

The Square scheme is like the rectangle color scheme, but the four colors are evenly spaced on the color wheel.



4293579206



4291484361



4290763750



4292989411

# Rectangle

The Rectangle color scheme consists of four colors that form a rectangle on the color wheel.



4293579206



4292597441



4290763750



4291876330



# Sweetspot

The Sweet Spot groups the original color and five complimentary colors.



4293579206



4294964978



4293576415



4286610040



4278190080



4286611584

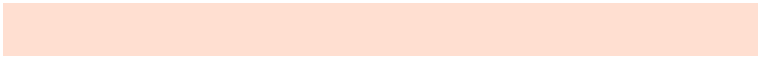


# Same Dimension

The Same Dimension uses a secret algorithm to generate beautiful new colors.



4293579206



4294959057



4293583814



4285885802



4290066176



4281733120

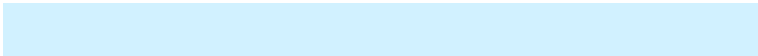


# Inverse Universe

The Inverse Universe completely reimagines the original color for something new.



4291223530



4291949055



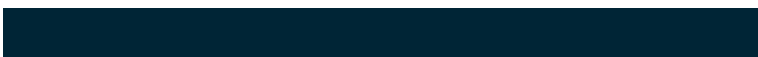
4291218922



4285166197



4278222517

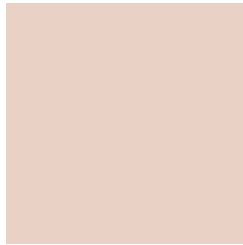


4278199606



# Previews

## White Background



This preview shows how the Android color 4293579206 looks on a white background.

## Color Contrast Check

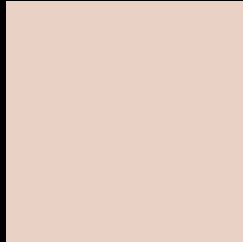
Large Text (above 18pt) WCAG AA × Fail

Any Text WCAG AA × Fail

Large Text (above 18pt) WCAG AAA × Fail

Any Text WCAG AAA × Fail

# Black Background



This preview shows how the Android color 4293579206 looks on a black background.

## Color Contrast Check

Large Text (above 18pt) WCAG AA ✓ Pass

Any Text WCAG AA ✓ Pass

Large Text (above 18pt) WCAG AAA ✓ Pass

Any Text WCAG AAA ✓ Pass

If you want to check with other color combinations, try the [Color Contrast Checker](#).



# Android 4293579206 Background



This preview shows how black text looks on a background with the Android color 4293579206.

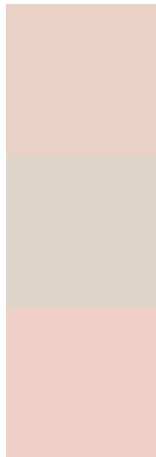


This preview shows how white text looks on a background with the Android color 4293579206.

# Color Blindness Simulation

Color vision deficiency is a very complex topic, and I could not describe the different causes any better than Wikipedia does, so if you want to learn more, you should check out their [article about color blindness](#).

## Dichromacy



**Original Color**  
4293579206

**Protanopia**  
4292728264

**Deuteranopia**  
4293971910



**Tritanopia**  
4293774814

# Trichromacy



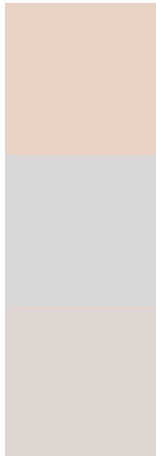
**Original Color**  
4293579206

**Protanomaly**  
4293055687

**Deuteranomaly**  
4293841094

**Tritanomaly**  
4293709525

# Monochromacy



**Original Color**  
4293579206

**Achromatopsia**  
4292335575

**Achromatomaly**  
4292793809

# CSS Examples

## Text

The CSS property to change the color of the text to Android 4293579206 is called "color". The color property can be set on classes, ids or directly on the HTML element.

This example shows how text in the color `rgb(234, 209, 198)` looks like.

```
.text, #text, p{  
    color:rgb(234, 209, 198)  
}
```

If you want to add a text shadow in that color use the text-shadow property, you can generate a text shadow directly with our [CSS Text Shadow Generator](#).

Here you see how black text with a 4 pixel rgb(234, 209, 198) colored shadow looks like.

```
.shadow{ text-shadow: 4px 4px 2px rgb(234, 209, 198) }
```

## Border

The CSS property to change the border of an element to Android 4293579206 is called "border". The border property can be set on classes, ids or directly on the HTML element.

This example shows the color as border, it can be applied via the CSS property "border" or "border-color".

```
.border, #border, table{ border:4px solid rgb(234, 209, 198) }
```

If only the border color should be changed use the property `border-color`.

```
.border{ border-color:rgb(234, 209, 198) }
```

If you want to add a box shadow in that color use:

Here you see how a box with a 4 pixel `rgb(234, 209, 198)` colored shadow looks like.

```
.boxshadow{ -moz-box-shadow:4px 4px 4px  
4px rgb(234, 209, 198); -webkit-box-  
shadow:4px 4px 4px 4px rgb(234, 209, 198);  
box-shadow:4px 4px 4px 4px rgb(234, 209,  
198) }
```

# Background

The CSS property to change the background color of an element to Android 4293579206 is called "background". The background property can be set on classes, ids or directly on the HTML element.

```
.background, #background, body{  
background: rgb(234, 209, 198) }
```

If only the background color should be changed can be used:

```
.background{ background-color: rgb(234,  
209, 198) }
```

This example shows the color as background, it is applied via the CSS property "background".

To optimize and compress your CSS code, you can use our [online CSS compressor and optimizer](#) based on csstidy. If you want to create a linear or radial gradient as background or border, check our [CSS Gradient Generator](#).



Hey! You found this booklet interesting? Support Converting Colors with the new Membership Option!

The pro membership hides all ads, plus gives you double the colors in the color bucket, and more awesome pro features!

**[Learn more, Memberships starting at \\$2.50/m!](#)**

**Follow me  
on Twitter!**

@ConvertingColor