

# Converting Colors

Android(4293580760)

Have a look what the booklet for  
Android(4293580760) contains.

<b>Android(4293580760)</b> .....	3
<b><i>Conversions</i></b> .....	4
<b><i>Details</i></b> .....	6
<b><i>Harmonies</i></b> .....	11
<b><i>Previews</i></b> .....	23
<b><i>Color Blindness Simulation</i></b> .....	26
<b><i>CSS Examples</i></b> .....	29

# **Color**

**Android(4293580760)**

# Conversions

## Conversions Part 1

Format	Color
Hex	EAD7D8
RGB	234, 215, 216
RGB Percent	92%, 84%, 85%
CMY	0.0824, 0.1569, 0.1529
CMYK	0.00, 0.08, 0.08, 0.08
HSL	357°, 31%, 88%
HSV	357°, 8%, 92%
XYZ	70.6268, 71.0512, 74.9576
YIQ	220.7950, 11.0030, 4.3390

# Conversions

## Conversions Part 2

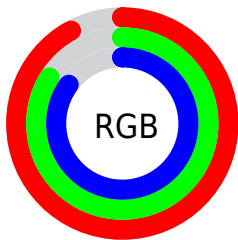
<b>Format</b>	<b>Color</b>
<b>R<sub>YB</sub></b>	234, 215, 216
Decimal	15390680
CIE Lab	87.51, 6.71, 1.87
CIE LCh	88, 6.969, 15.555
Yxy	71.0512, 0.3260, 0.3280
Android (android.graphics.Color)	4293580760 (0xFFEAD7D8)
YUV	220.7950, -2.3639, 11.5808
Hunter-Lab	84.2919, 2.0515, 6.2799

# Details

The Android color `4293580760` is a light color, and the websafe version is hex `CCCCCC`. A complement of this color would be `4292340457`, and the grayscale version is `4292730333`.

A 20% lighter version of the original color is `4294967295`, and `4289896609` is the 20% darker color. If you saturate the color by 10%, you get `4293574850`, and if you desaturate by 10%, it is `4293586670`.

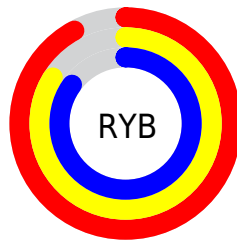
# Distribution



Red (92%)

Green (84%)

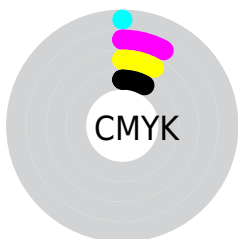
Blue (85%)



Red (92%)

Yellow (84%)

Blue (85%)

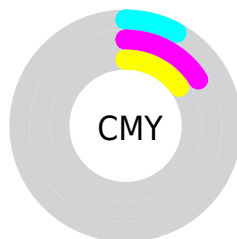


Cyan (0%)

Magenta (8%)

Yellow (8%)

Black (8%)



Cyan (8%)

Magenta (16%)

Yellow (15%)

# Brightness & Saturation Gradients

These gradients show how the Android color 4293580760 changes by changing the brightness by 10 percent. The first figure shows a shift by +10% for each color and the second figure -10%.


Similar to the brightness gradients but the following saturation gradients show a change of the Android color 4293580760 by changing the saturation by 10% instead.



 4293580760

 4293580760

4294967295

 4291738556

 4289896609

 4288120455

 4286410094

 4284765525

 4283186494

 4281673768

 4280292116

 4278190080

 4293580760

 4293580760

 4293574850

 4293586670

 4293568684

 4293591039

 4293562773

 4293556607

 4293550697

 4293544787

 4293538621

 4293532711

 4293526544

# Harmonies

## Analogous

The Analogous color harmony consists of three colors that are next to each other on the color wheel.



4293384159



4293580760



4293515474

# Triad

The Triadic color harmony groups three colors that are evenly spaced from another and form a triangle on the color wheel.



4293580760



4292206290



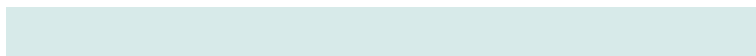
4291943912

# Complementary

The Complementary color scheme is a pair of colors which are on the opposite of each other on the color wheel.



4293580760



4292340457

# Split Complementary

Split-complementary colors differ from the complementary color scheme. The scheme consists of three colors, the original color and two neighbors of the complement color.



4291616740



4293580760



4291813336

# Square

The Square scheme is like the rectangle color scheme, but the four colors are evenly spaced on the color wheel.



4293580760



4292730063



4291616735



4292467688

# Rectangle

The Rectangle color scheme consists of four colors that form a rectangle on the color wheel.



4293580760



4293319119



4291616735



4291812839



# Sweetspot

The Sweet Spot groups the original color and five complimentary colors.



4293580760



4294966010



4293515242



4286610813



4278190080



4286611584

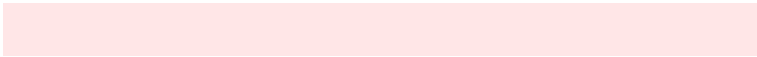


# Same Dimension

The Same Dimension uses a secret algorithm to generate beautiful new colors.



4293580760



4294960871



4293582807



4285885034



4290052106



4281729027

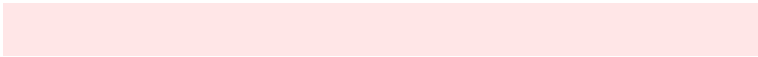


# Inverse Universe

The Inverse Universe completely reimagines the original color for something new.



4293580760



4294960871



4292338410



4285885034



4290052106

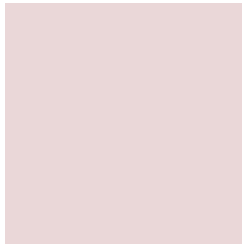


4281729027



# Previews

## White Background



This preview shows how the Android color 4293580760 looks on a white background.

## Color Contrast Check

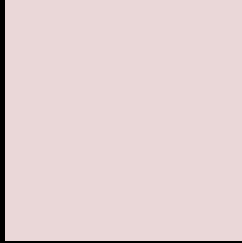
Large Text (above 18pt) WCAG AA × Fail

Any Text WCAG AA × Fail

Large Text (above 18pt) WCAG AAA × Fail

Any Text WCAG AAA × Fail

# Black Background



This preview shows how the Android color 4293580760 looks on a black background.

## Color Contrast Check

Large Text (above 18pt) WCAG AA ✓ Pass

Any Text WCAG AA ✓ Pass

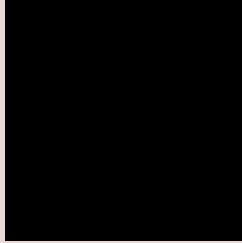
Large Text (above 18pt) WCAG AAA ✓ Pass

Any Text WCAG AAA ✓ Pass

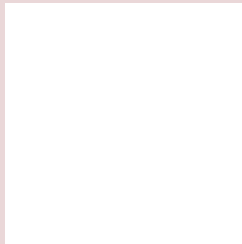
If you want to check with other color combinations, try the [Color Contrast Checker](#).



# Android 4293580760 Background



This preview shows how black text looks on a background with the Android color 4293580760.



This preview shows how white text looks on a background with the Android color 4293580760.

# Color Blindness Simulation

Color vision deficiency is a very complex topic, and I could not describe the different causes any better than Wikipedia does, so if you want to learn more, you should check out their [article about color blindness](#).

## Dichromacy

	<b>Original Color</b> 4293580760
	<b>Protanopia</b> 4292860634
	<b>Deuteranopia</b> 4294038745



**Tritanopia**  
4293711334

# Trichromacy



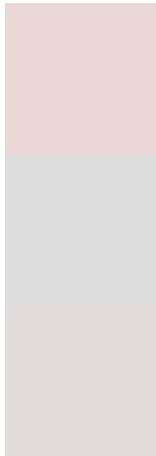
**Original Color**  
4293580760

**Protanomaly**  
4293122521

**Deuteranomaly**  
4293842393

**Tritanomaly**  
4293646049

# Monochromacy



**Original Color**  
4293580760

**Achromatopsia**  
4292730333

**Achromatomaly**  
4293057499

# CSS Examples

## Text

The CSS property to change the color of the text to Android 4293580760 is called "color". The color property can be set on classes, ids or directly on the HTML element.

This example shows how text in the color `rgb(234, 215, 216)` looks like.

```
.text, #text, p{  
    color:rgb(234, 215, 216)  
}
```

If you want to add a text shadow in that color use the text-shadow property, you can generate a text shadow directly with our [CSS Text Shadow Generator](#).

Here you see how black text with a 4 pixel rgb(234, 215, 216) colored shadow looks like.

```
.shadow{ text-shadow: 4px 4px 2px rgb(234, 215, 216) }
```

## Border

The CSS property to change the border of an element to Android 4293580760 is called "border". The border property can be set on classes, ids or directly on the HTML element.

This example shows the color as border, it can be applied via the CSS property "border" or "border-color".

```
.border, #border, table{ border:4px solid rgb(234, 215, 216) }
```

If only the border color should be changed use the property `border-color`.

```
.border{ border-color:rgb(234, 215, 216) }
```

If you want to add a box shadow in that color use:

Here you see how a box with a 4 pixel `rgb(234, 215, 216)` colored shadow looks like.

```
.boxshadow{ -moz-box-shadow:4px 4px 4px  
4px rgb(234, 215, 216); -webkit-box-  
shadow:4px 4px 4px 4px rgb(234, 215, 216);  
box-shadow:4px 4px 4px 4px rgb(234, 215,  
216) }
```

# Background

The CSS property to change the background color of an element to Android 4293580760 is called "background". The background property can be set on classes, ids or directly on the HTML element.

```
.background, #background, body{  
background: rgb(234, 215, 216) }
```

If only the background color should be changed can be used:

```
.background{ background-color: rgb(234,  
215, 216) }
```

This example shows the color as background, it is applied via the CSS property "background".

To optimize and compress your CSS code, you can use our [online CSS compressor and optimizer](#) based on csstidy. If you want to create a linear or radial gradient as background or border, check our [CSS Gradient Generator](#).



Hey! You found this booklet interesting? Support Converting Colors with the new Membership Option!

The pro membership hides all ads, plus gives you double the colors in the color bucket, and more awesome pro features!

**[Learn more, Memberships starting at \\$2.50/m!](#)**

**Follow me  
on Twitter!**

@ConvertingColor