

# Converting Colors

Android(4293596252)

Have a look what the booklet for  
Android(4293596252) contains.

<b>Android(4293596252)</b> .....	3
<i><b>Conversions</b></i> .....	4
<i><b>Details</b></i> .....	6
<i><b>Harmonies</b></i> .....	11
<i><b>Previews</b></i> .....	23
<i><b>Color Blindness Simulation</b></i> .....	26
<i><b>CSS Examples</b></i> .....	29

# Color

**Android(4293596252)**

# Conversions

## Conversions Part 1

Format	Color
Hex	EB145C
RGB	235, 20, 92
RGB Percent	92%, 8%, 36%
CMY	0.0784, 0.9216, 0.6392
CMYK	0.00, 0.91, 0.61, 0.08
HSL	340°, 84%, 50%
HSV	340°, 91%, 92%
XYZ	36.4429, 18.9352, 11.8593
YIQ	92.4930, 105.0280, 67.9720

# Conversions

## Conversions Part 2

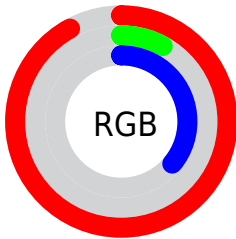
<b>Format</b>	<b>Color</b>
<a href="#">RYB</a>	<a href="#">235, 20, 92</a>
Decimal	<a href="#">15406172</a>
CIELab	<a href="#">50.61, 76.12, 19.33</a>
CIElCh	<a href="#">51, 78.540, 14.251</a>
Yxy	<a href="#">18.9352, 0.5420, 0.2816</a>
Android (android.graphics.Color)	<a href="#">4293596252 (0xFFEB145C)</a>
YUV	<a href="#">92.4930, -0.2430, 124.9786</a>
Hunter-Lab	<a href="#">43.5146, 73.3408, 14.3015</a>

# Details

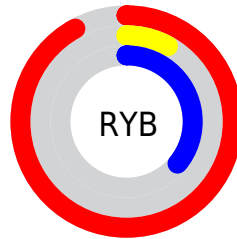
The Android color **4293596252** is a dark color, and the websafe version is hex **FF3366**. The color can be described as dark washed red. A complement of this color would be **4279561123**, and the grayscale version is **4284243036**.

A 20% lighter version of the original color is **4294927246**, and **4289396783** is the 20% darker color. If you saturate the color by 10%, you get **4293591119**, and if you desaturate by 10%, it is **4293602412**.

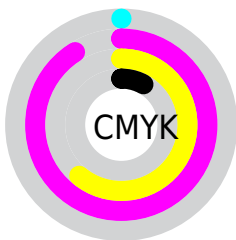
# Distribution



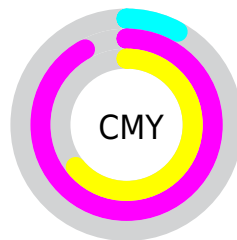
- Red (92%)
- Green (8%)
- Blue (36%)



- Red (92%)
- Yellow (8%)
- Blue (36%)



- Cyan (0%)
- Magenta (91%)
- Yellow (61%)
- Black (8%)



- Cyan (8%)
- Magenta (92%)
- Yellow (64%)

# Brightness & Saturation Gradients

These gradients show how the Android color 4293596252 changes by changing the brightness by 10 percent. The first figure shows a shift by +10% for each color and the second figure -10%.

Similar to the brightness gradients but the following saturation gradients show a change of the Android color 4293596252 by changing the saturation by 10% instead.





4293596252



4293596252

4294967295



4291493957



4294927246



4289396783



4294934952



4287365147



4294942659



4285333506



4294950367



4283367428



4294958076



4281270274



4294966015



4278190080



4293596252



4293596252



4293591119



4293602412

 4293608315

 4293614475

 4293620379

 4293626538

 4293632442

 4293638601

 4293644505

 4293650665

# Harmonies

## Analogous

The Analogous color harmony consists of three colors that are next to each other on the color wheel.



4292617375



4293596252



4292428825

# Triad

The Triadic color harmony groups three colors that are evenly spaced from another and form a triangle on the color wheel.



4293596252



4279143424



4278225659

# Complementary

The Complementary color scheme is a pair of colors which are on the opposite of each other on the color wheel.



4293596252



4279561123

# Split Complementary

Split-complementary colors differ from the complementary color scheme. The scheme consists of three colors, the original color and two neighbors of the complement color.



4278227926



4293596252



4278227793

# Square

The Square scheme is like the rectangle color scheme, but the four colors are evenly spaced on the color wheel.



4293596252



4285890304



4278228376



4278220540

# Rectangle

The Rectangle color scheme consists of four colors that form a rectangle on the color wheel.



4293596252



4290731520



4278228376



4278226674



# Sweetspot

The Sweet Spot groups the original color and five complimentary colors.



4293596252



4294949585



4288681195



4286601060



4278190080



4286611584



# Same Dimension

The Same Dimension uses a secret algorithm to generate beautiful new colors.



4293596252



4294901845



4293604372



4285885037



4290052157



4281729042



# Inverse Universe

The Inverse Universe completely reimagines the original color for something new.



4293596252



4294901845



4279553003



4285885037



4290052157



4281729042



# Previews

## White Background



This preview shows how the Android color 4293596252 looks on a white background.

## Color Contrast Check

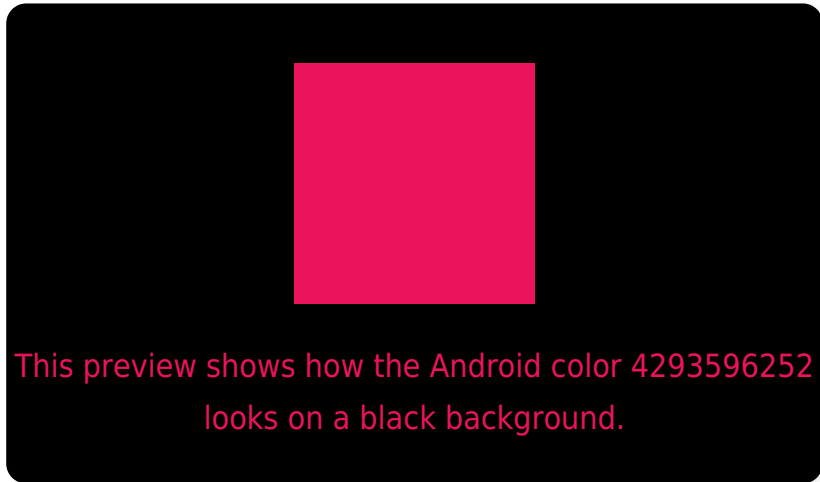
Large Text (above 18pt) WCAG AA ✓ Pass

Any Text WCAG AA ✗ Fail

Large Text (above 18pt) WCAG AAA ✗ Fail

Any Text WCAG AAA ✗ Fail

# Black Background



## Color Contrast Check

Large Text (above 18pt) WCAG AA ✓ Pass

Any Text WCAG AA ✓ Pass

Large Text (above 18pt) WCAG AAA ✓ Pass

Any Text WCAG AAA × Fail

If you want to check with other color combinations, try the [Color Contrast Checker](#).



# Android 4293596252 Background



This preview shows how black text looks on a background with the Android color 4293596252.



This preview shows how white text looks on a background with the Android color 4293596252.

# Color Blindness Simulation

Color vision deficiency is a very complex topic, and I could not describe the different causes any better than Wikipedia does, so if you want to learn more, you should check out their [article about color blindness](#).

## Dichromacy



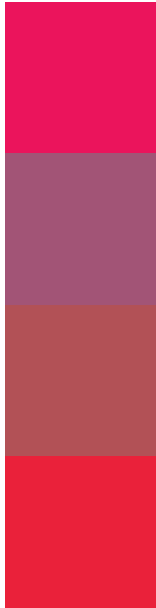
**Original Color**  
4293596252

**Protanopia**  
4286085509

**Deuteranopia**  
4287722578



# Trichromacy



**Original Color**  
4293596252

**Protanomaly**  
4288828534

**Deuteranomaly**  
4289876310

**Tritanomaly**  
4293534010

# Monochromacy



**Original Color**  
4293596252

**Achromatopsia**  
4284243036

**Achromatomaly**  
4287644252

# CSS Examples

## Text

The CSS property to change the color of the text to Android 4293596252 is called "color". The color property can be set on classes, ids or directly on the HTML element.

This example shows how text in the color `rgb(235, 20, 92)` looks like.

```
.text, #text, p{  
    color:rgb(235, 20, 92)  
}
```

If you want to add a text shadow in that color use the text-shadow property, you can generate a text shadow directly with our [CSS Text Shadow Generator](#).

Here you see how black text with a 4 pixel rgb(235, 20, 92) colored shadow looks like.

```
.shadow{ text-shadow: 4px 4px 2px rgb(235, 20, 92) }
```

## Border

The CSS property to change the border of an element to Android 4293596252 is called "border". The border property can be set on classes, ids or directly on the HTML element.

This example shows the color as border, it can be applied via the CSS property "border" or "border-color".

```
.border, #border, table{ border:4px solid rgb(235, 20, 92) }
```

If only the border color should be changed use the property border-color.

```
.border{ border-color:rgb(235, 20, 92) }
```

If you want to add a box shadow in that color use:

Here you see how a box with a 4 pixel rgb(235, 20, 92) colored shadow looks like.

```
.boxshadow{ -moz-box-shadow:4px 4px 4px  
4px rgb(235, 20, 92); -webkit-box-  
shadow:4px 4px 4px 4px rgb(235, 20, 92);  
box-shadow:4px 4px 4px 4px rgb(235, 20,  
92) }
```

# Background

The CSS property to change the background color of an element to Android 4293596252 is called "background". The background property can be set on classes, ids or directly on the HTML element.

```
.background, #background, body{  
background: rgb(235, 20, 92) }
```

If only the background color should be changed can be used:

```
.background{ background-color: rgb(235, 20,  
92) }
```

This example shows the color as background, it is applied via the CSS property "background".

To optimize and compress your CSS code, you can use our [online CSS compressor and optimizer](#) based on csstidy. If you want to create a linear or radial gradient as background or border, check our [CSS Gradient Generator](#).



Hey! You found this booklet interesting? Support Converting Colors with the new Membership Option!

The pro membership hides all ads, plus gives you double the colors in the color bucket, and more awesome pro features!

**[Learn more, Memberships starting at \\$2.50/m!](#)**

**Follow me  
on Twitter!**

@ConvertingColor