

Converting Colors

Android(4293599576)

Have a look what the booklet for
Android(4293599576) contains.

Android(4293599576)	3
<i>Conversions</i>	4
<i>Details</i>	6
<i>Harmonies</i>	11
<i>Previews</i>	23
<i>Color Blindness Simulation</i>	26
<i>CSS Examples</i>	29

Color

Android(4293599576)

Conversions

Conversions Part 1

Format	Color
Hex	EB2158
RGB	235, 33, 88
RGB Percent	92%, 13%, 35%
CMY	0.0784, 0.8706, 0.6549
CMYK	0.00, 0.86, 0.63, 0.08
HSL	344°, 83%, 53%
HSV	344°, 86%, 92%
XYZ	36.5663, 19.4545, 11.0603
YIQ	99.6680, 102.7370, 59.9290

Conversions

Conversions Part 2

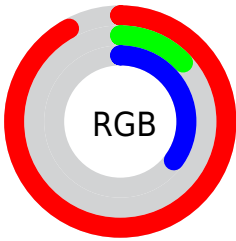
Format	Color
RYB	235, 33, 88
Decimal	15409496
CIELab	51.21, 73.93, 22.57
CIELCh	51, 77.300, 16.976
Yxy	19.4545, 0.5451, 0.2900
Android (android.graphics.Color)	4293599576 (0xFFEB2158)
YUV	99.6680, -5.7523, 118.6862
Hunter-Lab	44.1072, 70.7945, 16.0075

Details

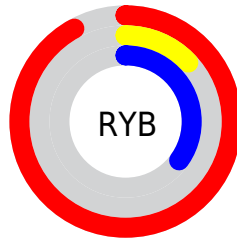
The Android color **4293599576** is a dark color, and the websafe version is hex **FF3366**. The color can be described as dark washed red. A complement of this color would be **4280413108**, and the grayscale version is **4284769380**.

A 20% lighter version of the original color is **4294928521**, and **4289396779** is the 20% darker color. If you saturate the color by 10%, you get **4293593671**, and if you desaturate by 10%, it is **4293605481**.

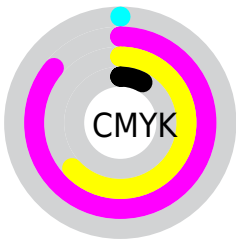
Distribution



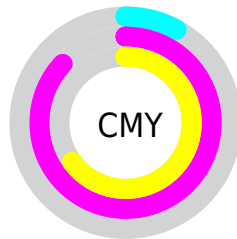
- Red (92%)
- Green (13%)
- Blue (35%)



- Red (92%)
- Yellow (13%)
- Blue (35%)



- Cyan (0%)
- Magenta (86%)
- Yellow (63%)
- Black (8%)



- Cyan (8%)
- Magenta (87%)
- Yellow (65%)

Brightness & Saturation Gradients

These gradients show how the Android color 4293599576 changes by changing the brightness by 10 percent. The first figure shows a shift by +10% for each color and the second figure -10%.

Similar to the brightness gradients but the following saturation gradients show a change of the Android color 4293599576 by changing the saturation by 10% instead.

 4293599576

 4293599576

4294967295

 4291493953

 4294928521

 4289396779

 4294936228

 4287365144


 4294943935

 4285333505

 4294951642

 4283367428

 4294959351

 4281270274

4294967039

 4278190080

 4293599576

 4293599576

 4293593671

 4293605481

■ 4293591104

■ 4293611642

■ 4293617803

■ 4293623708

■ 4293629614

■ 4293635775

■ 4293641936

■ 4293647841

■ 4293653746

Harmonies

Analogous

The Analogous color harmony consists of three colors that are next to each other on the color wheel.



4292814746



4293599576



4292299541

Triad

The Triadic color harmony groups three colors that are evenly spaced from another and form a triangle on the color wheel.



4293599576



4278226694



4278225660

Complementary

The Complementary color scheme is a pair of colors which are on the opposite of each other on the color wheel.



4293599576



4280413108

Split Complementary

Split-complementary colors differ from the complementary color scheme. The scheme consists of three colors, the original color and two neighbors of the complement color.



4278228186



4293599576



4278228058

Square

The Square scheme is like the rectangle color scheme, but the four colors are evenly spaced on the color wheel.



4293599576



4285628928



4278228639



4278220282

Rectangle

The Rectangle color scheme consists of four colors that form a rectangle on the color wheel.



4293599576



4290536192



4278228639



4278226933

Sweetspot

The Sweet Spot groups the original color and five complimentary colors.



4293599576



4294950351



4289864171



4286601315



4278190080



4286611584

Same Dimension

The Same Dimension uses a secret algorithm to generate beautiful new colors.



4293599576



4294901829



4293610785



4285885037



4290052145



4281729039

Inverse Universe

The Inverse Universe completely reimagines the original color for something new.



4293599576



4294901829



4280401899



4285885037



4290052145



4281729039

Previews

White Background



This preview shows how the Android color 4293599576 looks on a white background.

Color Contrast Check

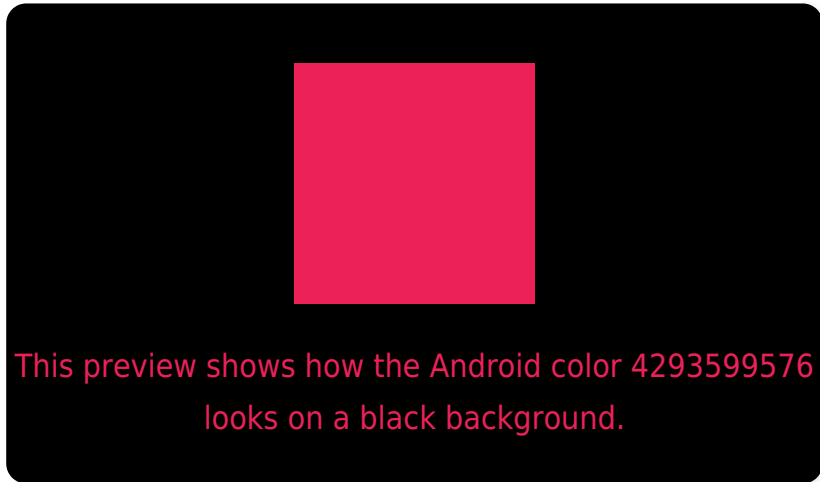
Large Text (above 18pt) WCAG AA ✓ Pass

Any Text WCAG AA ✗ Fail

Large Text (above 18pt) WCAG AAA ✗ Fail

Any Text WCAG AAA ✗ Fail

Black Background



Color Contrast Check

Large Text (above 18pt) WCAG AA ✓ Pass

Any Text WCAG AA ✓ Pass

Large Text (above 18pt) WCAG AAA ✓ Pass

Any Text WCAG AAA × Fail

If you want to check with other color combinations, try the [Color Contrast Checker](#).

Android 4293599576 Background



This preview shows how black text looks on a background with the Android color 4293599576.



This preview shows how white text looks on a background with the Android color 4293599576.

Color Blindness Simulation

Color vision deficiency is a very complex topic, and I could not describe the different causes any better than Wikipedia does, so if you want to learn more, you should check out their [article about color blindness](#).

Dichromacy

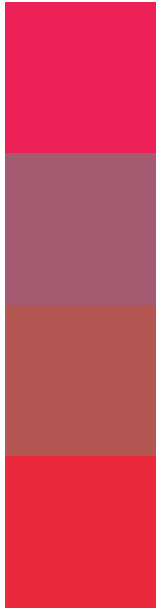


Original Color
4293599576

Protanopia
4286347901

Deuteranopia
4287919438

Trichromacy



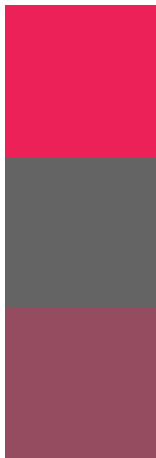
Original Color
4293599576

Protanomaly
4288961136

Deuteranomaly
4290008658

Tritanomaly
4293536061

Monochromacy



Original Color
4293599576

Achromatopsia
4284769380

Achromatomaly
4287974496

CSS Examples

Text

The CSS property to change the color of the text to Android 4293599576 is called "color". The color property can be set on classes, ids or directly on the HTML element.

This example shows how text in the color `rgb(235, 33, 88)` looks like.

```
.text, #text, p{  
    color:rgb(235, 33, 88)  
}
```

If you want to add a text shadow in that color use the text-shadow property, you can generate a text shadow directly with our [CSS Text Shadow Generator](#).

Here you see how black text with a 4 pixel rgb(235, 33, 88) colored shadow looks like.

```
.shadow{ text-shadow: 4px 4px 2px rgb(235, 33, 88) }
```

Border

The CSS property to change the border of an element to Android 4293599576 is called "border". The border property can be set on classes, ids or directly on the HTML element.

This example shows the color as border, it can be applied via the CSS property "border" or "border-color".

```
.border, #border, table{ border:4px solid rgb(235, 33, 88) }
```

If only the border color should be changed use the property border-color.

```
.border{ border-color:rgb(235, 33, 88) }
```

If you want to add a box shadow in that color use:

Here you see how a box with a 4 pixel rgb(235, 33, 88) colored shadow looks like.

```
.boxshadow{ -moz-box-shadow:4px 4px 4px  
4px rgb(235, 33, 88); -webkit-box-  
shadow:4px 4px 4px 4px rgb(235, 33, 88);  
box-shadow:4px 4px 4px 4px rgb(235, 33,  
88) }
```

Background

The CSS property to change the background color of an element to Android 4293599576 is called "background". The background property can be set on classes, ids or directly on the HTML element.

```
.background, #background, body{  
background: rgb(235, 33, 88) }
```

If only the background color should be changed can be used:

```
.background{ background-color: rgb(235, 33,  
88) }
```

This example shows the color as background, it is applied via the CSS property "background".

To optimize and compress your CSS code, you can use our [online CSS compressor and optimizer](#) based on csstidy. If you want to create a linear or radial gradient as background or border, check our [CSS Gradient Generator](#).

Hey! You found this booklet interesting? Support Converting Colors with the new Membership Option!

The pro membership hides all ads, plus gives you double the colors in the color bucket, and more awesome pro features!

[Learn more, Memberships starting at \\$2.50/m!](#)

**Follow me
on Twitter!**

@ConvertingColor