

Converting Colors

Android(4293604474)

Have a look what the booklet for
Android(4293604474) contains.

Android(4293604474)	3
<i>Conversions</i>	4
<i>Details</i>	6
<i>Harmonies</i>	11
<i>Previews</i>	23
<i>Color Blindness Simulation</i>	26
<i>CSS Examples</i>	29

Color

Android(4293604474)

Conversions

Conversions Part 1

Format	Color
Hex	EB347A
RGB	235, 52, 122
RGB Percent	92%, 20%, 48%
CMY	0.0784, 0.7961, 0.5216
CMYK	0.00, 0.78, 0.48, 0.08
HSL	337°, 82%, 56%
HSV	337°, 78%, 92%
XYZ	39.0018, 21.5233, 20.5111
YIQ	114.6970, 86.5980, 60.5660

Conversions

Conversions Part 2

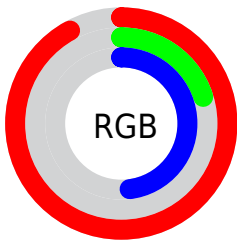
Format	Color
R_{YB}	235, 52, 122
Decimal	15414394
CIE _{Lab}	53.52, 71.91, 5.21
CIE _{LCh}	54, 72.095, 4.143
Yxy	21.5233, 0.4813, 0.2656
Android (android.graphics.Color)	4293604474 (0xFFEB347A)
YUV	114.6970, 3.6004, 105.5057
Hunter-Lab	46.3932, 68.8731, 6.2622

Details

The Android color **4293604474** is a dark color, and the websafe version is hex **CC0066**. The color can be described as middle washed rose. A complement of this color would be **4281658277**, and the grayscale version is **4285756275**.

A 20% lighter version of the original color is **4294931630**, and **4289527882** is the 20% darker color. If you saturate the color by 10%, you get **4293598571**, and if you desaturate by 10%, it is **4293610633**.

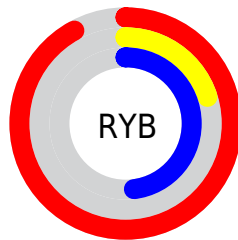
Distribution



Red (92%)

Green (20%)

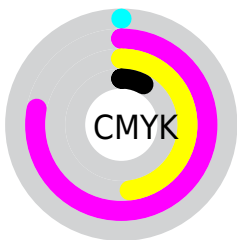
Blue (48%)



Red (92%)

Yellow (20%)

Blue (48%)

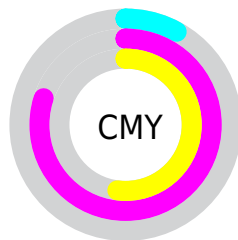


Cyan (0%)

Magenta (78%)

Yellow (48%)

Black (8%)



Cyan (8%)

Magenta (80%)

Yellow (52%)

Brightness & Saturation Gradients

These gradients show how the Android color 4293604474 changes by changing the brightness by 10 percent. The first figure shows a shift by +10% for each color and the second figure -10%.

Similar to the brightness gradients but the following saturation gradients show a change of the Android color 4293604474 by changing the saturation by 10% instead.

 4293604474

 4293604474

4294967295

 4291559521

 4294931630

 4289527882

 4294939081

 4287496244

 4294946789

 4285530143

 4294954239

 4283629573

 4294961919

 4281663490

 4278321152

 4278190080

 4293604474

 4293604474

 4293598571

 4293610633

 4293592413

 4293616535

 4293591130

 4293622694

 4293628596

 4293634755

 4293640657

 4293646816

 4293652718

 4293656573

Harmonies

Analogous

The Analogous color harmony consists of three colors that are next to each other on the color wheel.



4291840439



4293604474



4293150782

Triad

The Triadic color harmony groups three colors that are evenly spaced from another and form a triangle on the color wheel.



4293604474



4283600640



4278228208

Complementary

The Complementary color scheme is a pair of colors which are on the opposite of each other on the color wheel.



4293604474



4281658277

Split Complementary

Split-complementary colors differ from the complementary color scheme. The scheme consists of three colors, the original color and two neighbors of the complement color.



4278229700



4293604474



4278229062

Square

The Square scheme is like the rectangle color scheme, but the four colors are evenly spaced on the color wheel.



4293604474



4287856640



4278229895



4278224381

Rectangle

The Rectangle color scheme consists of four colors that form a rectangle on the color wheel.



4293604474



4291910931



4278229895



4278228964

Sweetspot

The Sweet Spot groups the original color and five complimentary colors.



4293604474



4294952155



4289017067



4286602345



4278190080



4286611584

Same Dimension

The Same Dimension uses a secret algorithm to generate beautiful new colors.



4293604474



4294906477



4293609780



4285885038



4290052165



4281729044

Inverse Universe

The Inverse Universe completely reimagines the original color for something new.



4293604474



4294906477



4281652971



4285885038



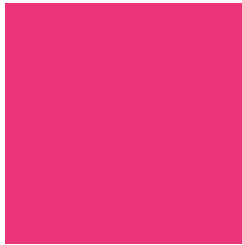
4290052165



4281729044

Previews

White Background



This preview shows how the Android color 4293604474 looks on a white background.

Color Contrast Check

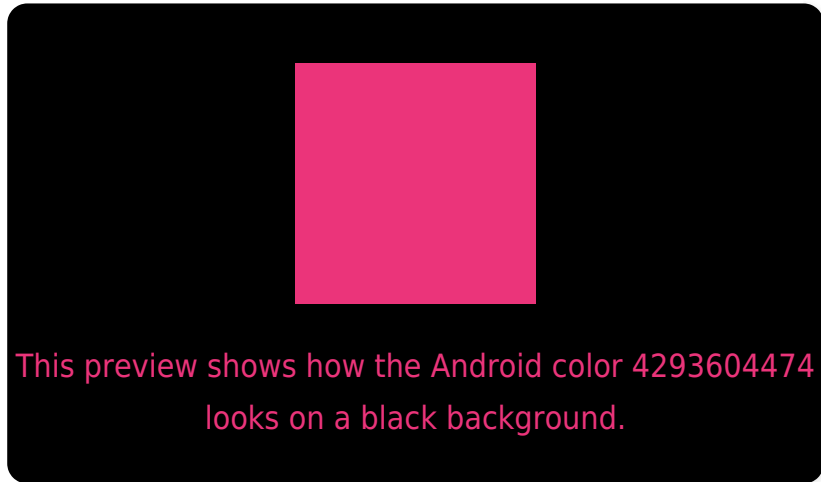
Large Text (above 18pt) WCAG AA ✓ Pass

Any Text WCAG AA ✗ Fail

Large Text (above 18pt) WCAG AAA ✗ Fail

Any Text WCAG AAA ✗ Fail

Black Background



Color Contrast Check

Large Text (above 18pt) WCAG AA ✓ Pass

Any Text WCAG AA ✓ Pass

Large Text (above 18pt) WCAG AAA ✓ Pass

Any Text WCAG AAA × Fail

If you want to check with other color combinations, try the [Color Contrast Checker](#).

Android 4293604474 Background



This preview shows how black text looks on a background with the Android color 4293604474.



This preview shows how white text looks on a background with the Android color 4293604474.

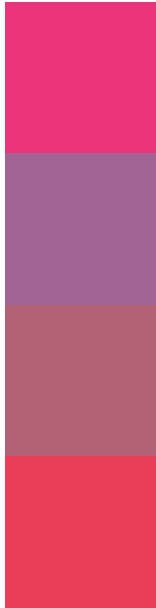
Color Blindness Simulation

Color vision deficiency is a very complex topic, and I could not describe the different causes any better than Wikipedia does, so if you want to learn more, you should check out their [article about color blindness](#).

Dichromacy



Trichromacy



Original Color
4293604474

Protanomaly
4288767125

Deuteranomaly
4289880692

Tritanomaly
4293475672

Monochromacy



Original Color
4293604474

Achromatopsia
4285756275

Achromatomaly
4288633974

CSS Examples

Text

The CSS property to change the color of the text to Android 4293604474 is called "color". The color property can be set on classes, ids or directly on the HTML element.

This example shows how text in the color `rgb(235, 52, 122)` looks like.

```
.text, #text, p{  
    color:rgb(235, 52, 122)  
}
```

If you want to add a text shadow in that color use the text-shadow property, you can generate a text shadow directly with our [CSS Text Shadow Generator](#).

Here you see how black text with a 4 pixel rgb(235, 52, 122) colored shadow looks like.

```
.shadow{ text-shadow: 4px 4px 2px rgb(235, 52, 122) }
```

Border

The CSS property to change the border of an element to Android 4293604474 is called "border". The border property can be set on classes, ids or directly on the HTML element.

This example shows the color as border, it can be applied via the CSS property "border" or "border-color".

```
.border, #border, table{ border:4px solid rgb(235, 52, 122) }
```

If only the border color should be changed use the property border-color.

```
.border{ border-color:rgb(235, 52, 122) }
```

If you want to add a box shadow in that color use:

Here you see how a box with a 4 pixel rgb(235, 52, 122) colored shadow looks like.

```
.boxshadow{ -moz-box-shadow:4px 4px 4px  
4px rgb(235, 52, 122); -webkit-box-  
shadow:4px 4px 4px 4px rgb(235, 52, 122);  
box-shadow:4px 4px 4px 4px rgb(235, 52,  
122) }
```

Background

The CSS property to change the background color of an element to Android 4293604474 is called "background". The background property can be set on classes, ids or directly on the HTML element.

```
.background, #background, body{  
background: rgb(235, 52, 122) }
```

If only the background color should be changed can be used:

```
.background{ background-color: rgb(235, 52,  
122) }
```

This example shows the color as background, it is applied via the CSS property "background".

To optimize and compress your CSS code, you can use our [online CSS compressor and optimizer](#) based on csstidy. If you want to create a linear or radial gradient as background or border, check our [CSS Gradient Generator](#).

Hey! You found this booklet interesting? Support Converting Colors with the new Membership Option!

The pro membership hides all ads, plus gives you double the colors in the color bucket, and more awesome pro features!

[Learn more, Memberships starting at \\$2.50/m!](#)

**Follow me
on Twitter!**

@ConvertingColor