

Converting Colors

Android(4293608058)

Have a look what the booklet for
Android(4293608058) contains.

Android(4293608058)	3
<i>Conversions</i>	4
<i>Details</i>	6
<i>Harmonies</i>	11
<i>Previews</i>	23
<i>Color Blindness Simulation</i>	26
<i>CSS Examples</i>	29

Color

Android(4293608058)

Conversions

Conversions Part 1

Format	Color
Hex	EB427A
RGB	235, 66, 122
RGB Percent	92%, 26%, 48%
CMY	0.0784, 0.7412, 0.5216
CMYK	0.00, 0.72, 0.48, 0.08
HSL	340°, 81%, 59%
HSV	340°, 72%, 92%
XYZ	39.7220, 22.9637, 20.7512
YIQ	122.9150, 82.7480, 53.2440

Conversions

Conversions Part 2

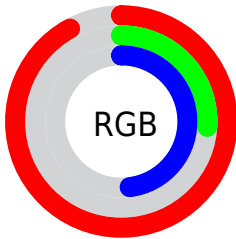
Format	Color
R_{YB}	235, 66, 122
Decimal	15417978
CIE _{Lab}	55.03, 67.64, 7.38
CIE _{LCh}	55, 68.040, 6.226
Yxy	22.9637, 0.4761, 0.2752
Android (android.graphics.Color)	4293608058 (0xFFEB427A)
YUV	122.9150, -0.4511, 98.2985
Hunter-Lab	47.9205, 64.1005, 7.8697

Details

The Android color **4293608058** is a dark color, and the websafe version is hex **CC3366**. The color can be described as middle muted rose. A complement of this color would be **4282575795**, and the grayscale version is **4286282619**.

A 20% lighter version of the original color is **4294934190**, and **4289527882** is the 20% darker color. If you saturate the color by 10%, you get **4293602154**, and if you desaturate by 10%, it is **4293614218**.

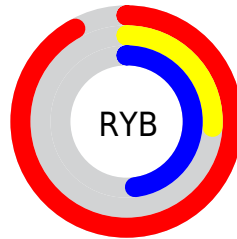
Distribution



Red (92%)

Green (26%)

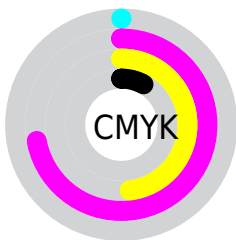
Blue (48%)



Red (92%)

Yellow (26%)

Blue (48%)

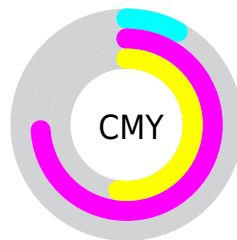


Cyan (0%)

Magenta (72%)

Yellow (48%)

Black (8%)



Cyan (8%)

Magenta (74%)

Yellow (52%)

Brightness & Saturation Gradients


These gradients show how the Android color 4293608058 changes by changing the brightness by 10 percent. The first figure shows a shift by +10% for each color and the second figure -10%.

Similar to the brightness gradients but the following saturation gradients show a change of the Android color 4293608058 by changing the saturation by 10% instead.

 4293608058

 4293608058

4294967295

 4291566945

 4294934190

 4289527882

 4294941641

 4287561780

 4294949093

 4285595679

 4294956543

 4283695109

 4294964223

 4281794562

 4278714368

 4278190080

 4293608058

 4293608058

 4293602154

 4293614218

 4293595995

 4293620121

 4293591118

 4293626281

 4293632185

 4293638345

 4293644248

 4293650408

 4293656312

 4293656575

Harmonies

Analogous

The Analogous color harmony consists of three colors that are next to each other on the color wheel.



4292039092



4293608058



4293088065

Triad

The Triadic color harmony groups three colors that are evenly spaced from another and form a triangle on the color wheel.



4293608058



4283732753



4278228720

Complementary

The Complementary color scheme is a pair of colors which are on the opposite of each other on the color wheel.



4293608058



4282575795

Split Complementary

Split-complementary colors differ from the complementary color scheme. The scheme consists of three colors, the original color and two neighbors of the complement color.



4278230472



4293608058



4278229841

Square

The Square scheme is like the rectangle color scheme, but the four colors are evenly spaced on the color wheel.



4293608058



4287857920



4278230671



4278224890

Rectangle

The Rectangle color scheme consists of four colors that form a rectangle on the color wheel.



4293608058



4291847708



4278230671



4278229477

Sweetspot

The Sweet Spot groups the original color and five complimentary colors.



4293608058



4294952921



4289938155



4286602857



4278190080



4286611584

Same Dimension

The Same Dimension uses a secret algorithm to generate beautiful new colors.



4293608058



4294911084



4293615170



4285885037



4290052156



4281729042

Inverse Universe

The Inverse Universe completely reimagines the original color for something new.



4293608058



4294911084



4282568683



4285885037



4290052156



4281729042

Previews

White Background



This preview shows how the Android color 4293608058 looks on a white background.

Color Contrast Check

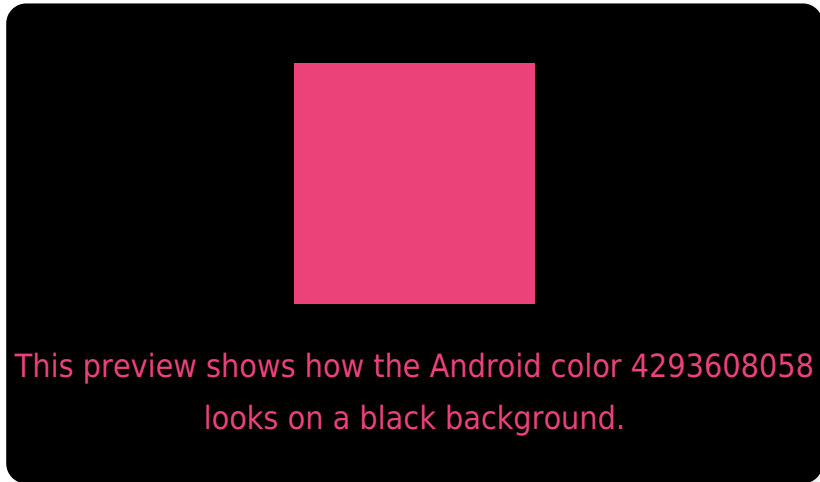
Large Text (above 18pt) WCAG AA ✓ Pass

Any Text WCAG AA × Fail

Large Text (above 18pt) WCAG AAA × Fail

Any Text WCAG AAA × Fail

Black Background



Color Contrast Check

Large Text (above 18pt) WCAG AA ✓ Pass

Any Text WCAG AA ✓ Pass

Large Text (above 18pt) WCAG AAA ✓ Pass

Any Text WCAG AAA × Fail

If you want to check with other color combinations, try the [Color Contrast Checker](#).

Android 4293608058 Background



This preview shows how black text looks on a background with the Android color 4293608058.



This preview shows how white text looks on a background with the Android color 4293608058.

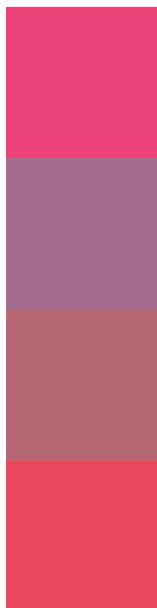
Color Blindness Simulation

Color vision deficiency is a very complex topic, and I could not describe the different causes any better than Wikipedia does, so if you want to learn more, you should check out their [article about color blindness](#).

Dichromacy



Trichromacy



Original Color

4293608058

Protanomaly

4289096593

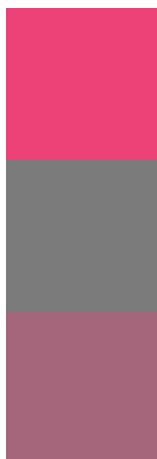
Deuteranomaly

4290144629

Tritanomaly

4293544031

Monochromacy



Original Color

4293608058

Achromatopsia

4286282619

Achromatomaly

4288964219

CSS Examples

Text

The CSS property to change the color of the text to Android 4293608058 is called "color". The color property can be set on classes, ids or directly on the HTML element.

This example shows how text in the color `rgb(235, 66, 122)` looks like.

```
.text, #text, p{  
  color:rgb(235, 66, 122)  
}
```

If you want to add a text shadow in that color use the text-shadow property, you can generate a text shadow directly with our [CSS Text Shadow Generator](#).

Here you see how black text with a 4 pixel rgb(235, 66, 122) colored shadow looks like.

```
.shadow{ text-shadow: 4px 4px 2px rgb(235, 66, 122) }
```

Border

The CSS property to change the border of an element to Android 4293608058 is called "border". The border property can be set on classes, ids or directly on the HTML element.

This example shows the color as border, it can be applied via the CSS property "border" or "border-color".

```
.border, #border, table{ border:4px solid rgb(235, 66, 122) }
```

If only the border color should be changed use the property `border-color`.

```
.border{ border-color:rgb(235, 66, 122) }
```

If you want to add a box shadow in that color use:

Here you see how a box with a 4 pixel `rgb(235, 66, 122)` colored shadow looks like.

```
.boxshadow{ -moz-box-shadow:4px 4px 4px  
4px rgb(235, 66, 122); -webkit-box-  
shadow:4px 4px 4px 4px rgb(235, 66, 122);  
box-shadow:4px 4px 4px 4px rgb(235, 66,  
122) }
```

Background

The CSS property to change the background color of an element to Android 4293608058 is called "background". The background property can be set on classes, ids or directly on the HTML element.

```
.background, #background, body{  
background: rgb(235, 66, 122) }
```

If only the background color should be changed can be used:

```
.background{ background-color: rgb(235, 66,  
122) }
```

This example shows the color as background, it is applied via the CSS property "background".

To optimize and compress your CSS code, you can use our [online CSS compressor and optimizer](#) based on csstidy. If you want to create a linear or radial gradient as background or border, check our [CSS Gradient Generator](#).

Hey! You found this booklet interesting? Support Converting Colors with the new Membership Option!

The pro membership hides all ads, plus gives you double the colors in the color bucket, and more awesome pro features!

[Learn more, Memberships starting at \\$2.50/m!](#)

**Follow me
on Twitter!**

@ConvertingColor