

Converting Colors

Android(4293613422)

Have a look what the booklet for
Android(4293613422) contains.

Android(4293613422)	3
<i>Conversions</i>	4
<i>Details</i>	6
<i>Harmonies</i>	11
<i>Previews</i>	23
<i>Color Blindness Simulation</i>	26
<i>CSS Examples</i>	29

Color

Android(4293613422)

Conversions

Conversions Part 1

Format	Color
Hex	EB576E
RGB	235, 87, 110
RGB Percent	92%, 34%, 43%
CMY	0.0784, 0.6588, 0.5686
CMYK	0.00, 0.63, 0.53, 0.08
HSL	351°, 79%, 63%
HSV	351°, 63%, 92%
XYZ	40.4836, 25.6043, 17.5603
YIQ	133.8740, 80.8250, 38.5290

Conversions

Conversions Part 2

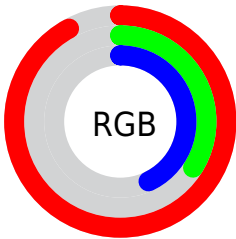
Format	Color
R_{YB}	235, 87, 110
Decimal	15423342
CIE _{Lab}	57.66, 58.70, 18.13
CIE _{LCh}	58, 61.438, 17.168
Yxy	25.6043, 0.4840, 0.3061
Android (android.graphics.Color)	4293613422 (0xFFEB576E)
YUV	133.8740, -11.7699, 88.6875
Hunter-Lab	50.6007, 54.2594, 14.8448

Details

The Android color **4293613422** is a dark color, and the websafe version is hex **FF6666**. The color can be described as middle muted rose. A complement of this color would be **4283952084**, and the grayscale version is **4287006342**.

A 20% lighter version of the original color is **4294938529**, and **4289599295** is the 20% darker color. If you saturate the color by 10%, you get **4293607258**, and if you desaturate by 10%, it is **4293619330**.

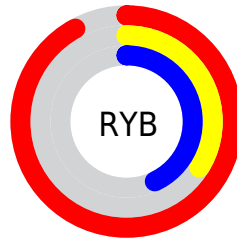
Distribution



Red (92%)

Green (34%)

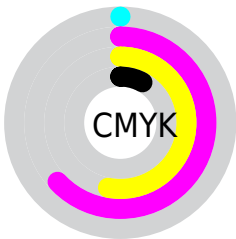
Blue (43%)



Red (92%)

Yellow (34%)

Blue (43%)

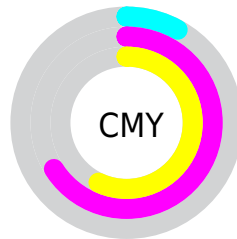


Cyan (0%)

Magenta (63%)

Yellow (53%)

Black (8%)



Cyan (8%)

Magenta (66%)

Yellow (57%)

Brightness & Saturation Gradients

These gradients show how the Android color 4293613422 changes by changing the brightness by 10 percent. The first figure shows a shift by +10% for each color and the second figure -10%.

Similar to the brightness gradients but the following saturation gradients show a change of the Android color 4293613422 by changing the saturation by 10% instead.

 4293613422

 4293613422

4294967295

 4291574358

 4294938529

 4289599295

 4294945980

 4287561769

 4294953176

 4285595669

 4294960884

 4283695104

 4281860098

 4279107584

 4278190080

 4293613422

 4293613422

 4293607258

 4293619330

 4293601350

 4293625494

 4293595442

 4293631658

 4293591077

 4293637565

 4293643473

 4293649637

 4293655545

 4293656575

Harmonies

Analogous

The Analogous color harmony consists of three colors that are next to each other on the color wheel.



4292893092



4293613422



4292569405

Triad

The Triadic color harmony groups three colors that are evenly spaced from another and form a triangle on the color wheel.



4293613422



4282883132



4278228979

Complementary

The Complementary color scheme is a pair of colors which are on the opposite of each other on the color wheel.



4293613422



4283952084

Split Complementary

Split-complementary colors differ from the complementary color scheme. The scheme consists of three colors, the original color and two neighbors of the complement color.



4278231512



4293613422



4278231665

Square

The Square scheme is like the rectangle color scheme, but the four colors are evenly spaced on the color wheel.



4293613422



4287140111



4278232233



4284188402

Rectangle

The Rectangle color scheme consists of four colors that form a rectangle on the color wheel.



4293613422



4291196960



4278232233



4278229997

Sweetspot

The Sweet Spot groups the original color and five complimentary colors.



4293613422



4294954966



4291975147



4286603879



4278190080



4286611584

Same Dimension

The Same Dimension uses a secret algorithm to generate beautiful new colors.



4293613422



4294917467



4293625943



4285885035



4290052124



4281729032

Inverse Universe

The Inverse Universe completely reimagines the original color for something new.



4293613422



4294917467



4283939563



4285885035



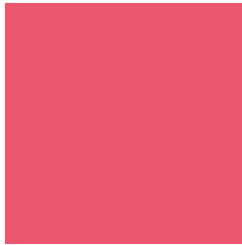
4290052124



4281729032

Previews

White Background



This preview shows how the Android color 4293613422 looks on a white background.

Color Contrast Check

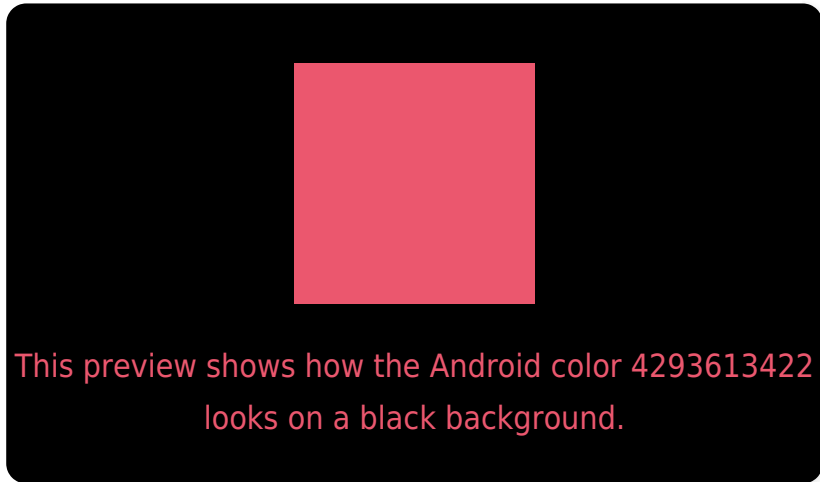
Large Text (above 18pt) WCAG AA ✓ Pass

Any Text WCAG AA ✗ Fail

Large Text (above 18pt) WCAG AAA ✗ Fail

Any Text WCAG AAA ✗ Fail

Black Background



Color Contrast Check

Large Text (above 18pt) WCAG AA ✓ Pass

Any Text WCAG AA ✓ Pass

Large Text (above 18pt) WCAG AAA ✓ Pass

Any Text WCAG AAA × Fail

If you want to check with other color combinations, try the [Color Contrast Checker](#).

Android 4293613422 Background



This preview shows how black text looks on a background with the Android color 4293613422.



This preview shows how white text looks on a background with the Android color 4293613422.

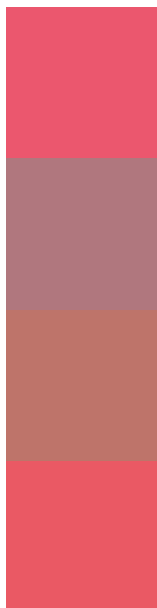
Color Blindness Simulation

Color vision deficiency is a very complex topic, and I could not describe the different causes any better than Wikipedia does, so if you want to learn more, you should check out their [article about color blindness](#).

Dichromacy



Trichromacy



Original Color

4293613422

Protanomaly

4289755006

Deuteranomaly

4290671722

Tritanomaly

4293548388

Monochromacy



Original Color

4293613422

Achromatopsia

4287006342

Achromatomaly

4289426813

CSS Examples

Text

The CSS property to change the color of the text to Android 4293613422 is called "color". The color property can be set on classes, ids or directly on the HTML element.

This example shows how text in the color `rgb(235, 87, 110)` looks like.

```
.text, #text, p{  
    color:rgb(235, 87, 110)  
}
```

If you want to add a text shadow in that color use the text-shadow property, you can generate a text shadow directly with our [CSS Text Shadow Generator](#).

Here you see how black text with a 4 pixel rgb(235, 87, 110) colored shadow looks like.

```
.shadow{ text-shadow: 4px 4px 2px rgb(235, 87, 110) }
```

Border

The CSS property to change the border of an element to Android 4293613422 is called "border". The border property can be set on classes, ids or directly on the HTML element.

This example shows the color as border, it can be applied via the CSS property "border" or "border-color".

```
.border, #border, table{ border:4px solid rgb(235, 87, 110) }
```

If only the border color should be changed use the property border-color.

```
.border{ border-color:rgb(235, 87, 110) }
```

If you want to add a box shadow in that color use:

Here you see how a box with a 4 pixel rgb(235, 87, 110) colored shadow looks like.

```
.boxshadow{ -moz-box-shadow:4px 4px 4px  
4px rgb(235, 87, 110); -webkit-box-  
shadow:4px 4px 4px 4px rgb(235, 87, 110);  
box-shadow:4px 4px 4px 4px rgb(235, 87,  
110) }
```

Background

The CSS property to change the background color of an element to Android 4293613422 is called "background". The background property can be set on classes, ids or directly on the HTML element.

```
.background, #background, body{  
background: rgb(235, 87, 110) }
```

If only the background color should be changed can be used:

```
.background{ background-color: rgb(235, 87,  
110) }
```

This example shows the color as background, it is applied via the CSS property "background".

To optimize and compress your CSS code, you can use our [online CSS compressor and optimizer](#) based on csstidy. If you want to create a linear or radial gradient as background or border, check our [CSS Gradient Generator](#).

Hey! You found this booklet interesting? Support Converting Colors with the new Membership Option!

The pro membership hides all ads, plus gives you double the colors in the color bucket, and more awesome pro features!

[Learn more, Memberships starting at \\$2.50/m!](#)

**Follow me
on Twitter!**

@ConvertingColor