

# Converting Colors

Android(4293616258)

Have a look what the booklet for  
Android(4293616258) contains.

<b>Android(4293616258)</b> .....	3
<i><b>Conversions</b></i> .....	4
<i><b>Details</b></i> .....	6
<i><b>Harmonies</b></i> .....	11
<i><b>Previews</b></i> .....	23
<i><b>Color Blindness Simulation</b></i> .....	26
<i><b>CSS Examples</b></i> .....	29

# **Color**

**Android(4293616258)**

# Conversions

## Conversions Part 1

<b>Format</b>	<b>Color</b>
Hex	EB6282
RGB	235, 98, 130
RGB Percent	92%, 38%, 51%
CMY	0.0784, 0.6157, 0.4902
CMYK	0.00, 0.58, 0.45, 0.08
HSL	346°, 77%, 65%
HSV	346°, 58%, 92%
XYZ	42.6579, 28.0092, 24.2771
YIQ	142.6110, 71.3800, 38.9960

# Conversions

## Conversions Part 2

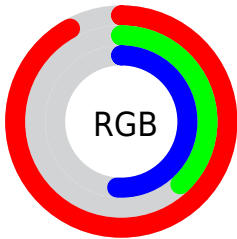
<b>Format</b>	<b>Color</b>
R <sub>Y</sub> B	235, 98, 130
Decimal	15426178
CIE Lab	59.90, 55.67, 9.58
CIE LCh	60, 56.492, 9.764
Yxy	28.0092, 0.4493, 0.2950
Android (android.graphics.Color)	4293616258 (0xFFEB6282)
YUV	142.6110, -6.2172, 81.0252
Hunter-Lab	52.9238, 51.2590, 9.8492

# Details

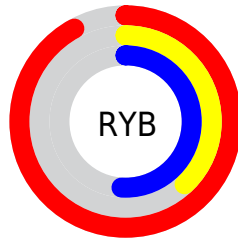
The Android color `4293616258` is a light color, and the websafe version is hex `FF6699`. A complement of this color would be `4284672971`, and the grayscale version is `4287598479`.

A 20% lighter version of the original color is `4294941367`, and `4289669201` is the 20% darker color. If you saturate the color by 10%, you get `4293610352`, and if you desaturate by 10%, it is `4293622420`.

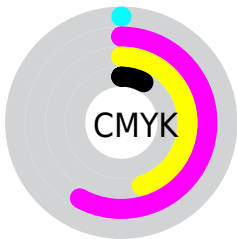
# Distribution



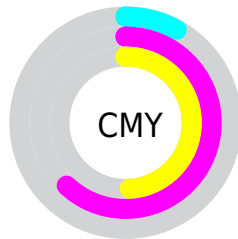
- Red (92%)
- Green (38%)
- Blue (51%)



- Red (92%)
- Yellow (38%)
- Blue (51%)



- Cyan (0%)
- Magenta (58%)
- Yellow (45%)
- Black (8%)



- Cyan (8%)
- Magenta (62%)
- Yellow (49%)

# Brightness & Saturation Gradients

These gradients show how the Android color 4293616258 changes by changing the brightness by 10 percent. The first figure shows a shift by +10% for each color and the second figure -10%.


Similar to the brightness gradients but the following saturation gradients show a change of the Android color 4293616258 by changing the saturation by 10% instead.



 4293616258

 4293616258

4294967295

 4291642985

 4294941367

 4289669201

 4294948562

 4287692858

 4294956015

 4285792293

 4294963455

 4283891728

 4282187779

 4279828481

 4278190080

 4293616258

 4293616258

 4293610352

 4293622420

 4293604190

 4293628326

 4293598284

 4293634488

 4293592122

 4293640394

 4293591095

 4293646556

 4293652462

 4293656575

# Harmonies

## Analogous

The Analogous color harmony consists of three colors that are next to each other on the color wheel.



4292438452



4293616258



4293094995

# Triad

The Triadic color harmony groups three colors that are evenly spaced from another and form a triangle on the color wheel.



4293616258



4284849983



4278231021

# Complementary

The Complementary color scheme is a pair of colors which are on the opposite of each other on the color wheel.



4293616258



4284672971

# Split Complementary

Split-complementary colors differ from the complementary color scheme. The scheme consists of three colors, the original color and two neighbors of the complement color.



4278232783



4293616258



4278232684

# Square

The Square scheme is like the rectangle color scheme, but the four colors are evenly spaced on the color wheel.



4293616258



4288385828



4278233248



4283142387

# Rectangle

The Rectangle color scheme consists of four colors that form a rectangle on the color wheel.



4293616258



4291918649



4278233248



4278231782



# Sweetspot

The Sweet Spot groups the original color and five complimentary colors.



4293616258



4294956254



4291388139



4286604908



4278190080



4286611584



# Same Dimension

The Same Dimension uses a secret algorithm to generate beautiful new colors.



4293616258



4294921590



4293624930



4285885036



4290052138



4281729037



# Inverse Universe

The Inverse Universe completely reimagines the original color for something new.



4293616258



4294921590



4284664299



4285885036



4290052138



4281729037



# Previews

## White Background



This preview shows how the Android color 4293616258 looks on a white background.

## Color Contrast Check

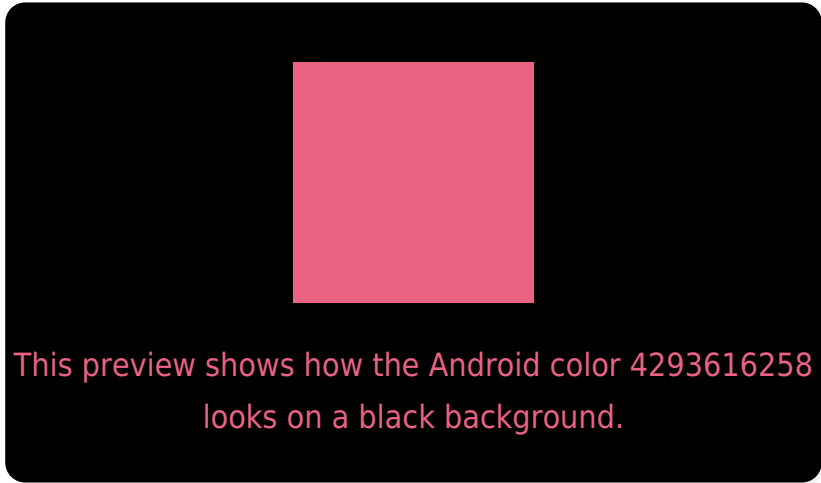
Large Text (above 18pt) WCAG AA ✓ Pass

Any Text WCAG AA ✗ Fail

Large Text (above 18pt) WCAG AAA ✗ Fail

Any Text WCAG AAA ✗ Fail

# Black Background



## Color Contrast Check

Large Text (above 18pt) WCAG AA ✓ Pass

Any Text WCAG AA ✓ Pass

Large Text (above 18pt) WCAG AAA ✓ Pass

Any Text WCAG AAA × Fail

If you want to check with other color combinations, try the [Color Contrast Checker](#).



# Android 4293616258 Background



This preview shows how black text looks on a background with the Android color 4293616258.

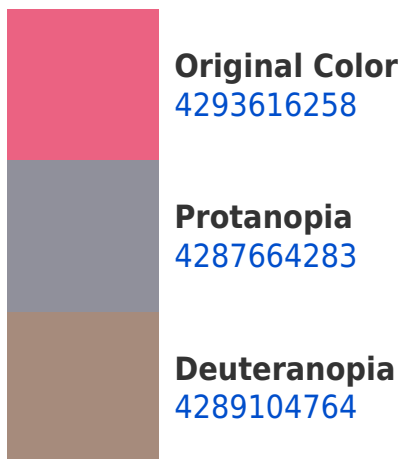


This preview shows how white text looks on a background with the Android color 4293616258.

# Color Blindness Simulation

Color vision deficiency is a very complex topic, and I could not describe the different causes any better than Wikipedia does, so if you want to learn more, you should check out their [article about color blindness](#).

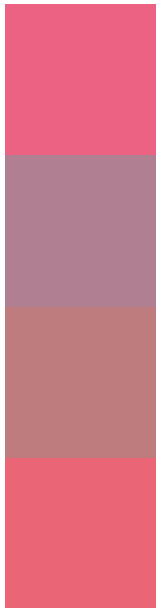
## Dichromacy





**Tritanopia**  
4293551725

# Trichromacy



**Original Color**  
4293616258

**Protanomaly**  
4289822610

**Deuteranomaly**  
4290739326

**Tritanomaly**  
4293551477

# Monochromacy



**Original Color**  
4293616258

**Achromatopsia**  
4287598479

**Achromatomaly**  
4289757066

# CSS Examples

## Text

The CSS property to change the color of the text to Android 4293616258 is called "color". The color property can be set on classes, ids or directly on the HTML element.

This example shows how text in the color `rgb(235, 98, 130)` looks like.

```
.text, #text, p{  
    color:rgb(235, 98, 130)  
}
```

If you want to add a text shadow in that color use the text-shadow property, you can generate a text shadow directly with our [CSS Text Shadow Generator](#).

Here you see how black text with a 4 pixel rgb(235, 98, 130) colored shadow looks like.

```
.shadow{ text-shadow: 4px 4px 2px rgb(235, 98, 130) }
```

## Border

The CSS property to change the border of an element to Android 4293616258 is called "border". The border property can be set on classes, ids or directly on the HTML element.

This example shows the color as border, it can be applied via the CSS property "border" or "border-color".

```
.border, #border, table{ border:4px solid rgb(235, 98, 130) }
```

If only the border color should be changed use the property `border-color`.

```
.border{ border-color:rgb(235, 98, 130) }
```

If you want to add a box shadow in that color use:

Here you see how a box with a 4 pixel `rgb(235, 98, 130)` colored shadow looks like.

```
.boxshadow{ -moz-box-shadow:4px 4px 4px  
4px rgb(235, 98, 130); -webkit-box-  
shadow:4px 4px 4px 4px rgb(235, 98, 130);  
box-shadow:4px 4px 4px 4px rgb(235, 98,  
130) }
```

# Background

The CSS property to change the background color of an element to Android 4293616258 is called "background". The background property can be set on classes, ids or directly on the HTML element.

```
.background, #background, body{  
background: rgb(235, 98, 130) }
```

If only the background color should be changed can be used:

```
.background{ background-color: rgb(235, 98,  
130) }
```

This example shows the color as background, it is applied via the CSS property "background".

To optimize and compress your CSS code, you can use our [online CSS compressor and optimizer](#) based on csstidy. If you want to create a linear or radial gradient as background or border, check our [CSS Gradient Generator](#).



Hey! You found this booklet interesting? Support Converting Colors with the new Membership Option!

The pro membership hides all ads, plus gives you double the colors in the color bucket, and more awesome pro features!

**[Learn more, Memberships starting at \\$2.50/m!](#)**

**Follow me  
on Twitter!**

@ConvertingColor