

Converting Colors

Android(4293617549)

Have a look what the booklet for
Android(4293617549) contains.

Android(4293617549)	3
<i>Conversions</i>	4
<i>Details</i>	6
<i>Harmonies</i>	11
<i>Previews</i>	23
<i>Color Blindness Simulation</i>	26
<i>CSS Examples</i>	29

Color

Android(4293617549)

Conversions

Conversions Part 1

Format	Color
Hex	EB678D
RGB	235, 103, 141
RGB Percent	92%, 40%, 55%
CMY	0.0784, 0.5961, 0.4471
CMYK	0.00, 0.56, 0.40, 0.08
HSL	343°, 77%, 66%
HSV	343°, 56%, 92%
XYZ	43.9189, 29.2858, 28.5372
YIQ	146.8000, 66.4740, 39.8020

Conversions

Conversions Part 2

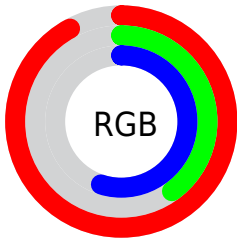
Format	Color
RYB	235, 103, 141
Decimal	15427469
CIELab	61.03, 54.51, 4.82
CIELCh	61, 54.726, 5.057
Yxy	29.2858, 0.4317, 0.2878
Android (android.graphics.Color)	4293617549 (0xFFEB678D)
YUV	146.8000, -2.8594, 77.3514
Hunter-Lab	54.1163, 50.1609, 6.6159

Details

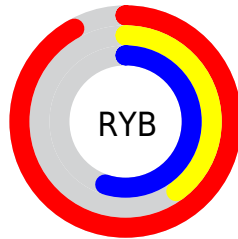
The Android color **4293617549** is a light color, and the websafe version is hex **FF6699**. A complement of this color would be **4285000645**, and the grayscale version is **4287861651**.

A 20% lighter version of the original color is **4294942402**, and **4289671003** is the 20% darker color. If you saturate the color by 10%, you get **4293611388**, and if you desaturate by 10%, it is **4293623710**.

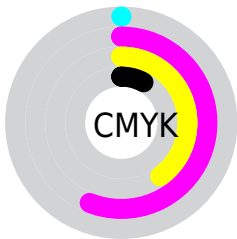
Distribution



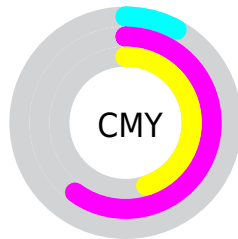
- Red (92%)
- Green (40%)
- Blue (55%)



- Red (92%)
- Yellow (40%)
- Blue (55%)



- Cyan (0%)
- Magenta (56%)
- Yellow (40%)
- Black (8%)



- Cyan (8%)
- Magenta (60%)
- Yellow (45%)

Brightness & Saturation Gradients

These gradients show how the Android color 4293617549 changes by changing the brightness by 10 percent. The first figure shows a shift by +10% for each color and the second figure -10%.

Similar to the brightness gradients but the following saturation gradients show a change of the Android color 4293617549 by changing the saturation by 10% instead.

 4293617549

 4293617549

4294967295

 4291644276

 4294942402

 4289671003

 4294949854

 4287760196

 4294957051

 4285857838

 4294964735

 4284022810

 4282318850

 4280090625

 4278190080

 4293617549

 4293617549

 4293611388

 4293623710

 4293605484

 4293629614

 4293599579

 4293635775

 4293593418

 4293641680

 4293591108

 4293647841

 4293653745

 4293656575

Harmonies

Analogous

The Analogous color harmony consists of three colors that are next to each other on the color wheel.



4292178109



4293617549



4293357662

Triad

The Triadic color harmony groups three colors that are evenly spaced from another and form a triangle on the color wheel.



4293617549



4285767743



4278232042

Complementary

The Complementary color scheme is a pair of colors which are on the opposite of each other on the color wheel.



4293617549



4285000645

Split Complementary

Split-complementary colors differ from the complementary color scheme. The scheme consists of three colors, the original color and two neighbors of the complement color.



4278233802



4293617549



4280395881

Square

The Square scheme is like the rectangle color scheme, but the four colors are evenly spaced on the color wheel.



4293617549



4289106731



4278234010



4282160884

Rectangle

The Rectangle color scheme consists of four colors that form a rectangle on the color wheel.



4293617549



4292377412



4278234010



4278232802

Sweetspot

The Sweet Spot groups the original color and five complimentary colors.



4293617549



4294956256



4290996203



4286604909



4278190080



4286611584

Same Dimension

The Same Dimension uses a secret algorithm to generate beautiful new colors.



4293617549



4294923397



4293624167



4285885037



4290052148



4281729039

Inverse Universe

The Inverse Universe completely reimagines the original color for something new.



4293617549



4294923397



4284994027



4285885037



4290052148



4281729039

Previews

White Background



This preview shows how the Android color 4293617549 looks on a white background.

Color Contrast Check

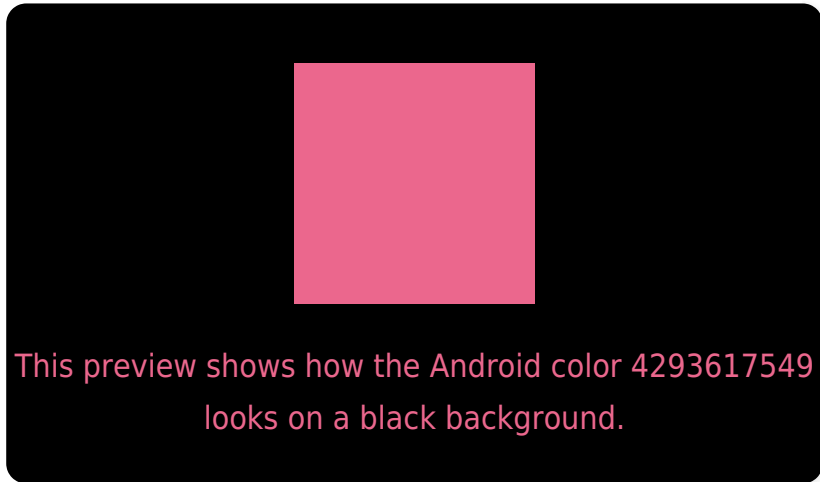
Large Text (above 18pt) WCAG AA ✓ Pass

Any Text WCAG AA ✗ Fail

Large Text (above 18pt) WCAG AAA ✗ Fail

Any Text WCAG AAA ✗ Fail

Black Background



Color Contrast Check

Large Text (above 18pt) WCAG AA ✓ Pass

Any Text WCAG AA ✓ Pass

Large Text (above 18pt) WCAG AAA ✓ Pass

Any Text WCAG AAA × Fail

If you want to check with other color combinations, try the [Color Contrast Checker](#).

Android 4293617549 Background



This preview shows how black text looks on a background with the Android color 4293617549.



This preview shows how white text looks on a background with the Android color 4293617549.

Color Blindness Simulation

Color vision deficiency is a very complex topic, and I could not describe the different causes any better than Wikipedia does, so if you want to learn more, you should check out their [article about color blindness](#).

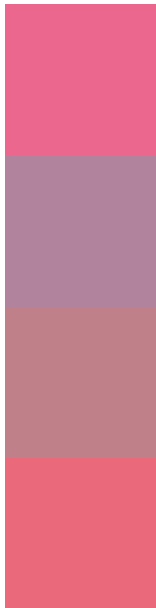
Dichromacy





Tritanopia
4293487731

Trichromacy



Original Color
4293617549

Protanomaly
4289889181

Deuteranomaly
4290805897

Tritanomaly
4293552764

Monochromacy



Original Color
4293617549

Achromatopsia
4287861651

Achromatomaly
4289954705

CSS Examples

Text

The CSS property to change the color of the text to Android 4293617549 is called "color". The color property can be set on classes, ids or directly on the HTML element.

This example shows how text in the color `rgb(235, 103, 141)` looks like.

```
.text, #text, p{  
    color:rgb(235, 103, 141)  
}
```

If you want to add a text shadow in that color use the text-shadow property, you can generate a text shadow directly with our [CSS Text Shadow Generator](#).

Here you see how black text with a 4 pixel rgb(235, 103, 141) colored shadow looks like.

```
.shadow{ text-shadow: 4px 4px 2px rgb(235, 103, 141) }
```

Border

The CSS property to change the border of an element to Android 4293617549 is called "border". The border property can be set on classes, ids or directly on the HTML element.

This example shows the color as border, it can be applied via the CSS property "border" or "border-color".

```
.border, #border, table{ border:4px solid rgb(235, 103, 141) }
```

If only the border color should be changed use the property `border-color`.

```
.border{ border-color:rgb(235, 103, 141) }
```

If you want to add a box shadow in that color use:

Here you see how a box with a 4 pixel `rgb(235, 103, 141)` colored shadow looks like.

```
.boxshadow{ -moz-box-shadow:4px 4px 4px  
4px rgb(235, 103, 141); -webkit-box-  
shadow:4px 4px 4px 4px rgb(235, 103, 141);  
box-shadow:4px 4px 4px 4px rgb(235, 103,  
141) }
```

Background

The CSS property to change the background color of an element to Android 4293617549 is called "background". The background property can be set on classes, ids or directly on the HTML element.

```
.background, #background, body{  
background: rgb(235, 103, 141) }
```

If only the background color should be changed can be used:

```
.background{ background-color: rgb(235,  
103, 141) }
```

This example shows the color as background, it is applied via the CSS property "background".

To optimize and compress your CSS code, you can use our [online CSS compressor and optimizer](#) based on csstidy. If you want to create a linear or radial gradient as background or border, check our [CSS Gradient Generator](#).

Hey! You found this booklet interesting? Support Converting Colors with the new Membership Option!

The pro membership hides all ads, plus gives you double the colors in the color bucket, and more awesome pro features!

[Learn more, Memberships starting at \\$2.50/m!](#)

**Follow me
on Twitter!**

@ConvertingColor