

Converting Colors

Android(4293619326)

Have a look what the booklet for
Android(4293619326) contains.

Android(4293619326)	3
<i>Conversions</i>	4
<i>Details</i>	6
<i>Harmonies</i>	11
<i>Previews</i>	23
<i>Color Blindness Simulation</i>	26
<i>CSS Examples</i>	29

Color

Android(4293619326)

Conversions

Conversions Part 1

Format	Color
Hex	EB6E7E
RGB	235, 110, 126
RGB Percent	92%, 43%, 49%
CMY	0.0784, 0.5686, 0.5059
CMYK	0.00, 0.53, 0.46, 0.08
HSL	352°, 76%, 68%
HSV	352°, 53%, 92%
XYZ	43.6028, 30.3204, 23.2930
YIQ	149.1990, 69.3640, 31.4760

Conversions

Conversions Part 2

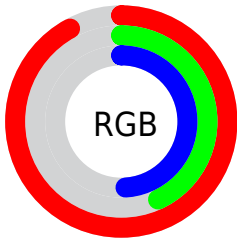
Format	Color
R _Y B	235, 110, 126
Decimal	15429246
CIE Lab	61.93, 49.72, 14.75
CIE LCh	62, 51.859, 16.521
Yxy	30.3204, 0.4485, 0.3119
Android (android.graphics.Color)	4293619326 (0xFFEB6E7E)
YUV	149.1990, -11.4371, 75.2475
Hunter-Lab	55.0640, 44.9846, 13.4641

Details

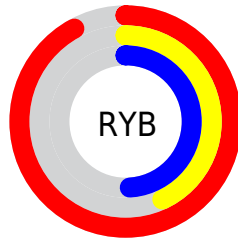
The Android color `4293619326` is a light color, and the websafe version is hex `CC6666`. A complement of this color would be `4285459419`, and the grayscale version is `4287993237`.

A 20% lighter version of the original color is `4294944179`, and `4289673293` is the 20% darker color. If you saturate the color by 10%, you get `4293613418`, and if you desaturate by 10%, it is `4293625490`.

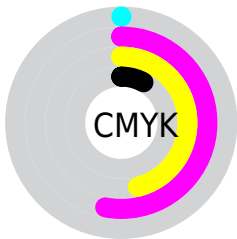
Distribution



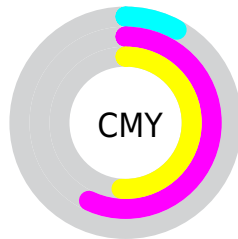
- Red (92%)
- Green (43%)
- Blue (49%)



- Red (92%)
- Yellow (43%)
- Blue (49%)



- Cyan (0%)
- Magenta (53%)
- Yellow (46%)
- Black (8%)



- Cyan (8%)
- Magenta (57%)
- Yellow (51%)

Brightness & Saturation Gradients

These gradients show how the Android color 4293619326 changes by changing the brightness by 10 percent. The first figure shows a shift by +10% for each color and the second figure -10%.

Similar to the brightness gradients but the following saturation gradients show a change of the Android color 4293619326 by changing the saturation by 10% instead.



4293619326



4293619326

4294967295



4291646309



4294944179



4289673293



4294951374



4287699511



4294958826



4285792290



4294966271



4283957260



4282187777



4280025089



4278190080



4293619326



4293619326

 4293613418

 4293625490

 4293607253

 4293631399

 4293601345

 4293637563

 4293595180

 4293643472

 4293591070

 4293649380

 4293655545

 4293656575

Harmonies

Analogous

The Analogous color harmony consists of three colors that are next to each other on the color wheel.



4292833452



4293619326



4292835925

Triad

The Triadic color harmony groups three colors that are evenly spaced from another and form a triangle on the color wheel.



4293619326



4284654932



4278231535

Complementary

The Complementary color scheme is a pair of colors which are on the opposite of each other on the color wheel.



4293619326



4285459419

Split Complementary

Split-complementary colors differ from the complementary color scheme. The scheme consists of three colors, the original color and two neighbors of the complement color.



4278233559



4293619326



4278233983

Square

The Square scheme is like the rectangle color scheme, but the four colors are evenly spaced on the color wheel.



4293619326



4288125752



4278234286



4285764334

Rectangle

The Rectangle color scheme consists of four colors that form a rectangle on the color wheel.



4293619326



4291593792



4278234286



4278232297

Sweetspot

The Sweet Spot groups the original color and five complimentary colors.



4293619326



4294956763



4292505323



4286605162



4278190080



4286611584

Same Dimension

The Same Dimension uses a secret algorithm to generate beautiful new colors.



4293619326



4294925425



4293631086



4285885035



4290052119



4281729031

Inverse Universe

The Inverse Universe completely reimagines the original color for something new.



4293619326



4294925425



4285447659



4285885035



4290052119



4281729031

Previews

White Background



This preview shows how the Android color 4293619326 looks on a white background.

Color Contrast Check

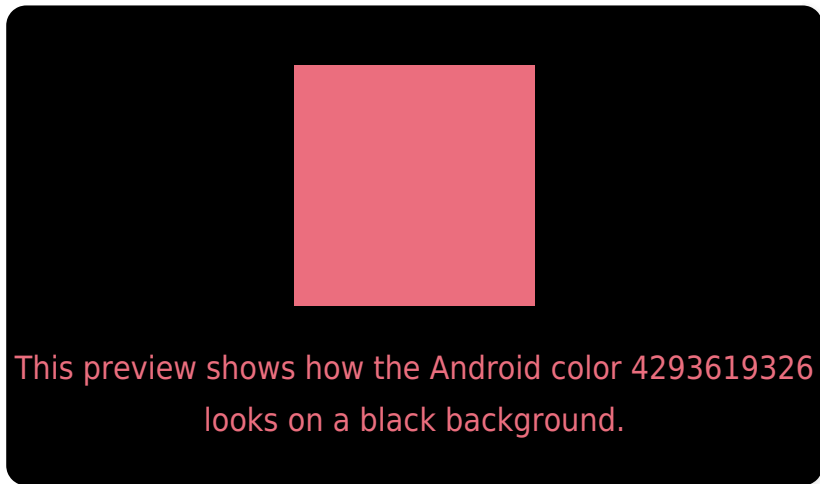
Large Text (above 18pt) WCAG AA × Fail

Any Text WCAG AA × Fail

Large Text (above 18pt) WCAG AAA × Fail

Any Text WCAG AAA × Fail

Black Background



Color Contrast Check

Large Text (above 18pt) WCAG AA ✓ Pass

Any Text WCAG AA ✓ Pass

Large Text (above 18pt) WCAG AAA ✓ Pass

Any Text WCAG AAA ✓ Pass

If you want to check with other color combinations, try the [Color Contrast Checker](#).

Android 4293619326 Background



This preview shows how black text looks on a background with the Android color 4293619326.



This preview shows how white text looks on a background with the Android color 4293619326.

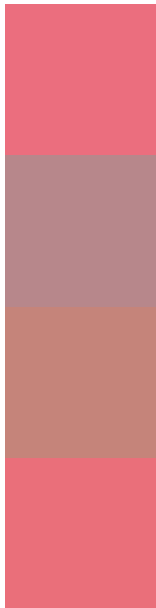
Color Blindness Simulation

Color vision deficiency is a very complex topic, and I could not describe the different causes any better than Wikipedia does, so if you want to learn more, you should check out their [article about color blindness](#).

Dichromacy



Trichromacy



Original Color
4293619326

Protanomaly
4290217867

Deuteranomaly
4291134586

Tritanomaly
4293554042

Monochromacy



Original Color
4293619326

Achromatopsia
4287993237

Achromatomaly
4290021261

CSS Examples

Text

The CSS property to change the color of the text to Android 4293619326 is called "color". The color property can be set on classes, ids or directly on the HTML element.

This example shows how text in the color `rgb(235, 110, 126)` looks like.

```
.text, #text, p{  
    color:rgb(235, 110, 126)  
}
```

If you want to add a text shadow in that color use the text-shadow property, you can generate a text shadow directly with our [CSS Text Shadow Generator](#).

Here you see how black text with a 4 pixel rgb(235, 110, 126) colored shadow looks like.

```
.shadow{ text-shadow: 4px 4px 2px rgb(235, 110, 126) }
```

Border

The CSS property to change the border of an element to Android 4293619326 is called "border". The border property can be set on classes, ids or directly on the HTML element.

This example shows the color as border, it can be applied via the CSS property "border" or "border-color".

```
.border, #border, table{ border:4px solid rgb(235, 110, 126) }
```

If only the border color should be changed use the property `border-color`.

```
.border{ border-color:rgb(235, 110, 126) }
```

If you want to add a box shadow in that color use:

Here you see how a box with a 4 pixel `rgb(235, 110, 126)` colored shadow looks like.

```
.boxshadow{ -moz-box-shadow:4px 4px 4px  
4px rgb(235, 110, 126); -webkit-box-  
shadow:4px 4px 4px 4px rgb(235, 110, 126);  
box-shadow:4px 4px 4px 4px rgb(235, 110,  
126) }
```

Background

The CSS property to change the background color of an element to Android 4293619326 is called "background". The background property can be set on classes, ids or directly on the HTML element.

```
.background, #background, body{  
background: rgb(235, 110, 126) }
```

If only the background color should be changed can be used:

```
.background{ background-color: rgb(235,  
110, 126) }
```

This example shows the color as background, it is applied via the CSS property "background".

To optimize and compress your CSS code, you can use our [online CSS compressor and optimizer](#) based on csstidy. If you want to create a linear or radial gradient as background or border, check our [CSS Gradient Generator](#).

Hey! You found this booklet interesting? Support Converting Colors with the new Membership Option!

The pro membership hides all ads, plus gives you double the colors in the color bucket, and more awesome pro features!

[Learn more, Memberships starting at \\$2.50/m!](#)

**Follow me
on Twitter!**

@ConvertingColor