

# Converting Colors

Android(4293628332)

Have a look what the booklet for  
Android(4293628332) contains.

<b>Android(4293628332)</b> .....	3
<b><i>Conversions</i></b> .....	4
<b><i>Details</i></b> .....	6
<b><i>Harmonies</i></b> .....	11
<b><i>Previews</i></b> .....	23
<b><i>Color Blindness Simulation</i></b> .....	26
<b><i>CSS Examples</i></b> .....	29

# **Color**

**Android(4293628332)**

# Conversions

## Conversions Part 1

Format	Color
Hex	EB91AC
RGB	235, 145, 172
RGB Percent	92%, 57%, 67%
CMY	0.0784, 0.4314, 0.3255
CMYK	0.00, 0.38, 0.27, 0.08
HSL	342°, 69%, 75%
HSV	342°, 38%, 92%
XYZ	51.8327, 40.8915, 44.1907
YIQ	174.9880, 44.9730, 27.4770

# Conversions

## Conversions Part 2

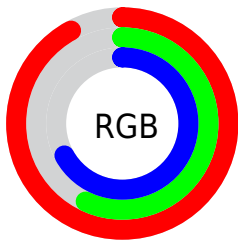
Format	Color
R <sub>Y</sub> B	235, 145, 172
Decimal	15438252
CIE Lab	70.10, 37.38, 0.37
CIE LCh	70, 37.382, 0.569
Yxy	40.8915, 0.3786, 0.2987
Android (android.graphics.Color)	4293628332 (0xFFEB91AC)
YUV	174.9880, -1.4731, 52.6305
Hunter-Lab	63.9465, 32.7794, 3.7897

# Details

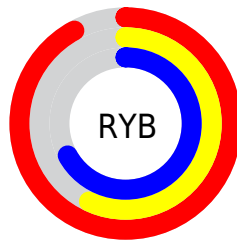
The Android color `4293628332` is a light color, and the websafe version is hex `FF99CC`. A complement of this color would be `4287753168`, and the grayscale version is `4289703855`.

A 20% lighter version of the original color is `4294953187`, and `4289813880` is the 20% darker color. If you saturate the color by 10%, you get `4293622428`, and if you desaturate by 10%, it is `4293634492`.

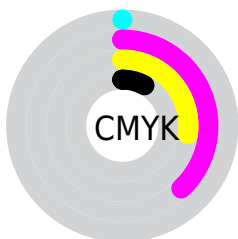
# Distribution



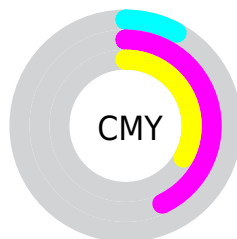
- Red (92%)
- Green (57%)
- Blue (67%)



- Red (92%)
- Yellow (57%)
- Blue (67%)



- Cyan (0%)
- Magenta (38%)
- Yellow (27%)
- Black (8%)



- Cyan (8%)
- Magenta (43%)
- Yellow (33%)

# Brightness & Saturation Gradients

These gradients show how the Android color 4293628332 changes by changing the brightness by 10 percent. The first figure shows a shift by +10% for each color and the second figure -10%.

Similar to the brightness gradients but the following saturation gradients show a change of the Android color 4293628332 by changing the saturation by 10% instead.



 4293628332

 4293628332

4294967295

 4291721105

 4294953187

 4289813880


 4294960383

 4287972191

 4286196296

 4284419889

 4282712092

 4281335810

 4278190080

 4293628332

 4293628332

 4293622428

 4293634492

 4293616267

 4293640397

 4293610363

 4293646301

 4293604202

 4293652462

 4293598042

 4293656574

 4293592137

 4293656575

 4293591111

# Harmonies

## Analogous

The Analogous color harmony consists of three colors that are next to each other on the color wheel.



4292319181



4293628332



4293694603

# Triad

The Triadic color harmony groups three colors that are evenly spaced from another and form a triangle on the color wheel.



4293628332



4288590960



4282431718

# Complementary

The Complementary color scheme is a pair of colors which are on the opposite of each other on the color wheel.



4293628332



4287753168

# Split Complementary

Split-complementary colors differ from the complementary color scheme. The scheme consists of three colors, the original color and two neighbors of the complement color.



4280139213



4293628332



4285905545

# Square

The Square scheme is like the rectangle color scheme, but the four colors are evenly spaced on the color wheel.



4293628332



4290881895



4282891691



4286295791

# Rectangle

The Rectangle color scheme consists of four colors that form a rectangle on the color wheel.



4293628332



4293171832



4282891691



4281187039



# Sweetspot

The Sweet Spot groups the original color and five complimentary colors.



4293628332



4294960107



4291858923



4286607220



4278190080



4286611584



# Same Dimension

The Same Dimension uses a secret algorithm to generate beautiful new colors.



4293628332



4294937261



4293632913



4285885037



4290052150



4281729040



# Inverse Universe

The Inverse Universe completely reimagines the original color for something new.



4293628332



4294937261



4287748587



4285885037



4290052150

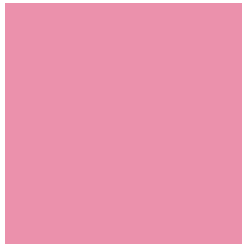


4281729040



# Previews

## White Background



This preview shows how the Android color 4293628332 looks on a white background.

## Color Contrast Check

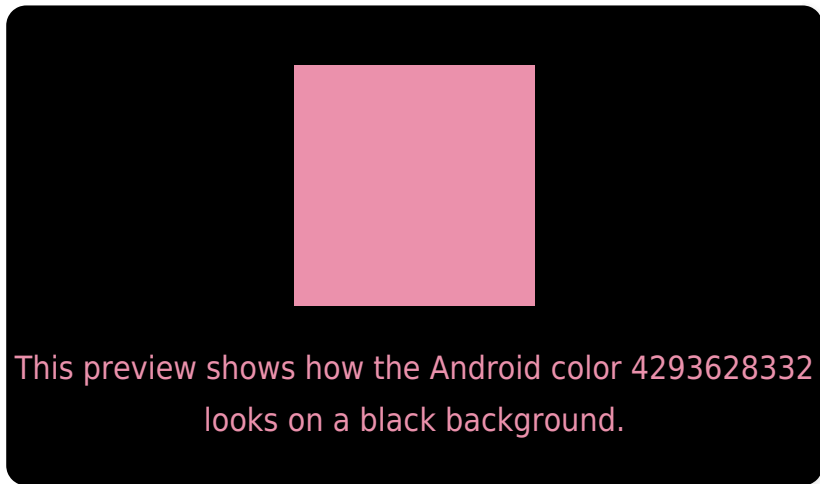
Large Text (above 18pt) WCAG AA × Fail

Any Text WCAG AA × Fail

Large Text (above 18pt) WCAG AAA × Fail

Any Text WCAG AAA × Fail

# Black Background



## Color Contrast Check

Large Text (above 18pt) WCAG AA ✓ Pass

Any Text WCAG AA ✓ Pass

Large Text (above 18pt) WCAG AAA ✓ Pass

Any Text WCAG AAA ✓ Pass

If you want to check with other color combinations, try the [Color Contrast Checker](#).



# Android 4293628332 Background



This preview shows how black text looks on a background with the Android color 4293628332.




This preview shows how white text looks on a background with the Android color 4293628332.

# Color Blindness Simulation

Color vision deficiency is a very complex topic, and I could not describe the different causes any better than Wikipedia does, so if you want to learn more, you should check out their [article about color blindness](#).

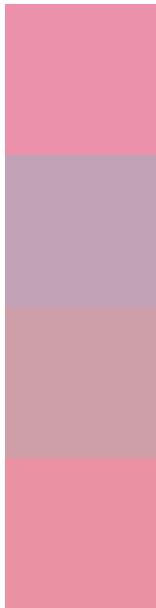
## Dichromacy





**Tritanopia**  
4293563294

# Trichromacy



**Original Color**  
4293628332

**Protanomaly**  
4290945718

**Deuteranomaly**  
4291731113

**Tritanomaly**  
4293563043

# Monochromacy



**Original Color**  
4293628332

**Achromatopsia**  
4289703855

**Achromatomaly**  
4291142830

# CSS Examples

## Text

The CSS property to change the color of the text to Android 4293628332 is called "color". The color property can be set on classes, ids or directly on the HTML element.

This example shows how text in the color `rgb(235, 145, 172)` looks like.

```
.text, #text, p{  
    color:rgb(235, 145, 172)  
}
```

If you want to add a text shadow in that color use the text-shadow property, you can generate a text shadow directly with our [CSS Text Shadow Generator](#).

Here you see how black text with a 4 pixel rgb(235, 145, 172) colored shadow looks like.

```
.shadow{ text-shadow: 4px 4px 2px rgb(235, 145, 172) }
```

## Border

The CSS property to change the border of an element to Android 4293628332 is called "border". The border property can be set on classes, ids or directly on the HTML element.

This example shows the color as border, it can be applied via the CSS property "border" or "border-color".

```
.border, #border, table{ border:4px solid rgb(235, 145, 172) }
```

If only the border color should be changed use the property `border-color`.

```
.border{ border-color:rgb(235, 145, 172) }
```

If you want to add a box shadow in that color use:

Here you see how a box with a 4 pixel `rgb(235, 145, 172)` colored shadow looks like.

```
.boxshadow{ -moz-box-shadow:4px 4px 4px  
4px rgb(235, 145, 172); -webkit-box-  
shadow:4px 4px 4px 4px rgb(235, 145, 172);  
box-shadow:4px 4px 4px 4px rgb(235, 145,  
172) }
```

# Background

The CSS property to change the background color of an element to Android 4293628332 is called "background". The background property can be set on classes, ids or directly on the HTML element.

```
.background, #background, body{  
background: rgb(235, 145, 172) }
```

If only the background color should be changed can be used:

```
.background{ background-color: rgb(235,  
145, 172) }
```

This example shows the color as background, it is applied via the CSS property "background".

To optimize and compress your CSS code, you can use our [online CSS compressor and optimizer](#) based on csstidy. If you want to create a linear or radial gradient as background or border, check our [CSS Gradient Generator](#).



Hey! You found this booklet interesting? Support Converting Colors with the new Membership Option!

The pro membership hides all ads, plus gives you double the colors in the color bucket, and more awesome pro features!

**[Learn more, Memberships starting at \\$2.50/m!](#)**

**Follow me  
on Twitter!**

@ConvertingColor