

Converting Colors

Android(4293631671)

Have a look what the booklet for
Android(4293631671) contains.

Android(4293631671)	3
<i>Conversions</i>	4
<i>Details</i>	6
<i>Harmonies</i>	11
<i>Previews</i>	23
<i>Color Blindness Simulation</i>	26
<i>CSS Examples</i>	29

Color

Android(4293631671)

Conversions

Conversions Part 1

Format	Color
Hex	EB9EB7
RGB	235, 158, 183
RGB Percent	92%, 62%, 72%
CMY	0.0784, 0.3804, 0.2824
CMYK	0.00, 0.33, 0.22, 0.08
HSL	341°, 66%, 77%
HSV	341°, 33%, 92%
XYZ	55.0351, 45.5348, 50.6882
YIQ	183.8730, 37.8670, 24.0990

Conversions

Conversions Part 2

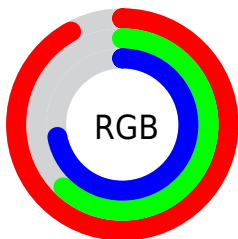
Format	Color
R _Y B	235, 158, 183
Decimal	15441591
CIE Lab	73.24, 32.08, -1.14
CIE LCh	73, 32.099, 357.968
Yxy	45.5348, 0.3638, 0.3010
Android (android.graphics.Color)	4293631671 (0xFFEB9EB7)
YUV	183.8730, -0.4304, 44.8384
Hunter-Lab	67.4795, 27.4924, 2.6991

Details

The Android color `4293631671` is a light color, and the websafe version is hex `FF99CC`. A complement of this color would be `4288605138`, and the grayscale version is `4290295992`.

A 20% lighter version of the original color is `4294956527`, and `4289882754` is the 20% darker color. If you saturate the color by 10%, you get `4293625767`, and if you desaturate by 10%, it is `4293637831`.

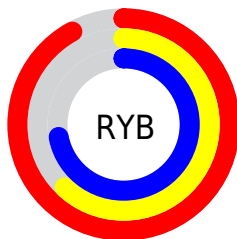
Distribution



Red (92%)

Green (62%)

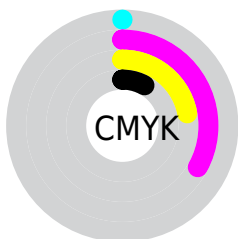
Blue (72%)



Red (92%)

Yellow (62%)

Blue (72%)

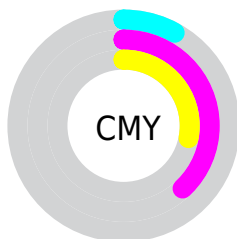


Cyan (0%)

Magenta (33%)

Yellow (22%)

Black (8%)



Cyan (8%)

Magenta (38%)

Yellow (28%)

Brightness & Saturation Gradients

These gradients show how the Android color 4293631671 changes by changing the brightness by 10 percent. The first figure shows a shift by +10% for each color and the second figure -10%.

Similar to the brightness gradients but the following saturation gradients show a change of the Android color 4293631671 by changing the saturation by 10% instead.



4293631671



4293631671

4294967295



4291724188



4294956527



4289882754



4294963967



4288041065



4286265425



4284555322



4282844709



4281335823



4278714368



4278190080

 4293631671

 4293631671

 4293625767

 4293637831

 4293619607

 4293643735

 4293613703

 4293649895

 4293607544

 4293655798

 4293601640

 4293656575

 4293595480

 4293591116

Harmonies

Analogous

The Analogous color harmony consists of three colors that are next to each other on the color wheel.



4292322259



4293631671



4293828762

Triad

The Triadic color harmony groups three colors that are evenly spaced from another and form a triangle on the color wheel.



4293631671



4289510015



4284661733

Complementary

The Complementary color scheme is a pair of colors which are on the opposite of each other on the color wheel.



4293631671



4288605138

Split Complementary

Split-complementary colors differ from the complementary color scheme. The scheme consists of three colors, the original color and two neighbors of the complement color.



4283745230



4293631671



4287218068

Square

The Square scheme is like the rectangle color scheme, but the four colors are evenly spaced on the color wheel.



4293631671



4291473785



4285056177



4287281134

Rectangle

The Rectangle color scheme consists of four colors that form a rectangle on the color wheel.



4293631671



4293371017



4285056177



4284072415

Sweetspot

The Sweet Spot groups the original color and five complimentary colors.



4293631671



4294960878



4291927787



4286607477



4278190080



4286611584

Same Dimension

The Same Dimension uses a secret algorithm to generate beautiful new colors.



4293631671



4294941884



4293634974



4285885037



4290052155



4281729041

Inverse Universe

The Inverse Universe completely reimagines the original color for something new.



4293631671



4294941884



4288601835



4285885037



4290052155



4281729041

Previews

White Background



This preview shows how the Android color 4293631671 looks on a white background.

Color Contrast Check

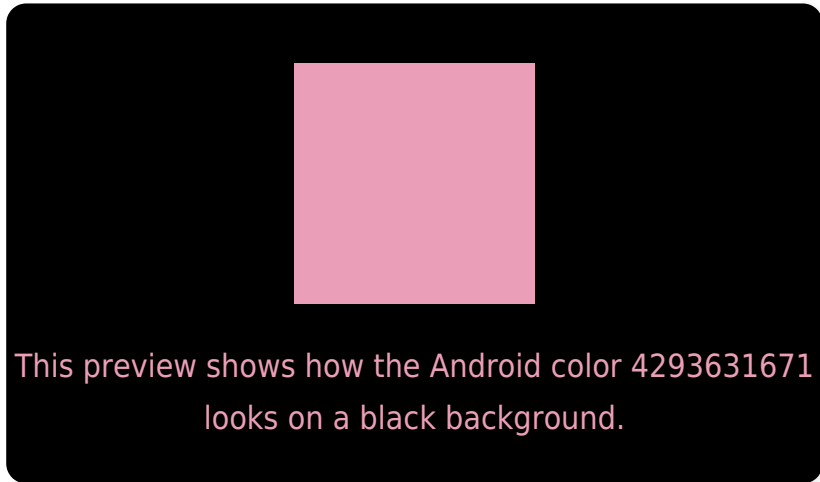
Large Text (above 18pt) WCAG AA × Fail

Any Text WCAG AA × Fail

Large Text (above 18pt) WCAG AAA × Fail

Any Text WCAG AAA × Fail

Black Background



Color Contrast Check

Large Text (above 18pt) WCAG AA ✓ Pass

Any Text WCAG AA ✓ Pass

Large Text (above 18pt) WCAG AAA ✓ Pass

Any Text WCAG AAA ✓ Pass

If you want to check with other color combinations, try the [Color Contrast Checker](#).

Android 4293631671 Background



This preview shows how black text looks on a background with the Android color 4293631671.



This preview shows how white text looks on a background with the Android color 4293631671.

Color Blindness Simulation

Color vision deficiency is a very complex topic, and I could not describe the different causes any better than Wikipedia does, so if you want to learn more, you should check out their [article about color blindness](#).


Dichromacy



Original Color
4293631671

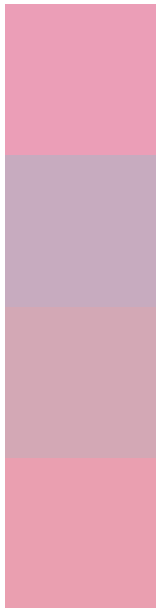
Protanopia
4289967044

Deuteranopia
4291210932



Tritanopia
4293566636

Trichromacy



Original Color
4293631671

Protanomaly
4291275711

Deuteranomaly
4292061365

Tritanomaly
4293566384

Monochromacy



Original Color
4293631671

Achromatopsia
4290295992

Achromatomaly
4291538872

CSS Examples

Text

The CSS property to change the color of the text to Android 4293631671 is called "color". The color property can be set on classes, ids or directly on the HTML element.

This example shows how text in the color `rgb(235, 158, 183)` looks like.

```
.text, #text, p{  
    color:rgb(235, 158, 183)  
}
```

If you want to add a text shadow in that color use the text-shadow property, you can generate a text shadow directly with our [CSS Text Shadow Generator](#).

Here you see how black text with a 4 pixel rgb(235, 158, 183) colored shadow looks like.

```
.shadow{ text-shadow: 4px 4px 2px rgb(235, 158, 183) }
```

Border

The CSS property to change the border of an element to Android 4293631671 is called "border". The border property can be set on classes, ids or directly on the HTML element.

This example shows the color as border, it can be applied via the CSS property "border" or "border-color".

```
.border, #border, table{ border:4px solid rgb(235, 158, 183) }
```

If only the border color should be changed use the property `border-color`.

```
.border{ border-color:rgb(235, 158, 183) }
```

If you want to add a box shadow in that color use:

Here you see how a box with a 4 pixel `rgb(235, 158, 183)` colored shadow looks like.

```
.boxshadow{ -moz-box-shadow:4px 4px 4px  
4px rgb(235, 158, 183); -webkit-box-  
shadow:4px 4px 4px 4px rgb(235, 158, 183);  
box-shadow:4px 4px 4px 4px rgb(235, 158,  
183) }
```

Background

The CSS property to change the background color of an element to Android 4293631671 is called "background". The background property can be set on classes, ids or directly on the HTML element.

```
.background, #background, body{  
background: rgb(235, 158, 183) }
```

If only the background color should be changed can be used:

```
.background{ background-color: rgb(235,  
158, 183) }
```

This example shows the color as background, it is applied via the CSS property "background".

To optimize and compress your CSS code, you can use our [online CSS compressor and optimizer](#) based on csstidy. If you want to create a linear or radial gradient as background or border, check our [CSS Gradient Generator](#).

Hey! You found this booklet interesting? Support Converting Colors with the new Membership Option!

The pro membership hides all ads, plus gives you double the colors in the color bucket, and more awesome pro features!

[Learn more, Memberships starting at \\$2.50/m!](#)

**Follow me
on Twitter!**

@ConvertingColor