

Converting Colors

Android(4293638626)

Have a look what the booklet for
Android(4293638626) contains.

Android(4293638626)	3
<i>Conversions</i>	4
<i>Details</i>	6
<i>Harmonies</i>	11
<i>Previews</i>	23
<i>Color Blindness Simulation</i>	26
<i>CSS Examples</i>	29

Color

Android(4293638626)

Conversions

Conversions Part 1

Format	Color
Hex	EBB9E2
RGB	235, 185, 226
RGB Percent	92%, 73%, 89%
CMY	0.0784, 0.2745, 0.1137
CMYK	0.00, 0.21, 0.04, 0.08
HSL	311°, 56%, 82%
HSV	311°, 21%, 92%
XYZ	65.3374, 57.8511, 79.6742
YIQ	204.6240, 16.6390, 23.3510

Conversions

Conversions Part 2

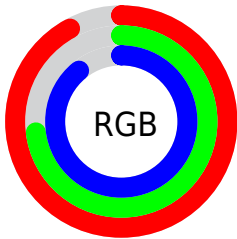
Format	Color
R _Y B	235, 185, 226
Decimal	15448546
CIE Lab	80.66, 24.66, -13.58
CIE LCh	81, 28.147, 331.160
Yxy	57.8511, 0.3221, 0.2852
Android (android.graphics.Color)	4293638626 (0xFFEBB9E2)
YUV	204.6240, 10.5384, 26.6398
Hunter-Lab	76.0599, 20.2312, -8.8655

Details

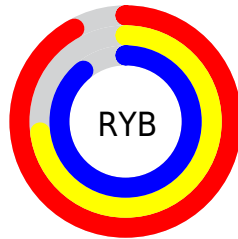
The Android color `4293638626` is a light color, and the websafe version is hex `FFCCFF`. A complement of this color would be `4290374594`, and the grayscale version is `4291677645`.

A 20% lighter version of the original color is `4294963711`, and `4289954987` is the 20% darker color. If you saturate the color by 10%, you get `4293632734`, and if you desaturate by 10%, it is `4293644774`.

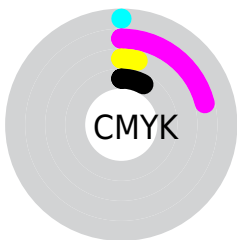
Distribution



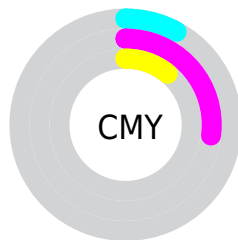
- Red (92%)
- Green (73%)
- Blue (89%)



- Red (92%)
- Yellow (73%)
- Blue (89%)



- Cyan (0%)
- Magenta (21%)
- Yellow (4%)
- Black (8%)



- Cyan (8%)
- Magenta (27%)
- Yellow (11%)

Brightness & Saturation Gradients

These gradients show how the Android color 4293638626 changes by changing the brightness by 10 percent. The first figure shows a shift by +10% for each color and the second figure -10%.

Similar to the brightness gradients but the following saturation gradients show a change of the Android color 4293638626 by changing the saturation by 10% instead.

 4293638626

 4293638626

4294967295

 4291796678

 4294963711

 4289954987

 4288178832

 4286402934

 4284758622

 4283114310

 4281601328

 4280352795

 4278190080

 4293638626

 4293638626

 4293632734

 4293644774

 4293626586

 4293650666

 4293620693

 4293656559

 4293614545

 4293656563

 4293608653

 4293656567

 4293602505

 4293656571

 4293596612

 4293656575

 4293591233

Harmonies

Analogous

The Analogous color harmony consists of three colors that are next to each other on the color wheel.



4291740149



4293638626



4294686152

Triad

The Triadic color harmony groups three colors that are evenly spaced from another and form a triangle on the color wheel.



4293638626



4292593556



4286306018

Complementary

The Complementary color scheme is a pair of colors which are on the opposite of each other on the color wheel.



4293638626



4290374594

Split Complementary

Split-complementary colors differ from the complementary color scheme. The scheme consists of three colors, the original color and two neighbors of the complement color.



4287027144



4293638626



4290695067

Square

The Square scheme is like the rectangle color scheme, but the four colors are evenly spaced on the color wheel.



4293638626



4294033051



4288730286



4287222517

Rectangle

The Rectangle color scheme consists of four colors that form a rectangle on the color wheel.



4293638626



4294882998



4288730286



4286371802

Sweetspot

The Sweet Spot groups the original color and five complimentary colors.



4293638626



4294963452



4290886123



4286609278



4278190080



4286611584

Same Dimension

The Same Dimension uses a secret algorithm to generate beautiful new colors.



4293638626



4294950387



4293638602



4285885043



4290052244



4281729068

Inverse Universe

The Inverse Universe completely reimagines the original color for something new.



4293638626



4294950387



4290374618



4285885043



4290052244



4281729068

Previews

White Background



This preview shows how the Android color 4293638626 looks on a white background.

Color Contrast Check

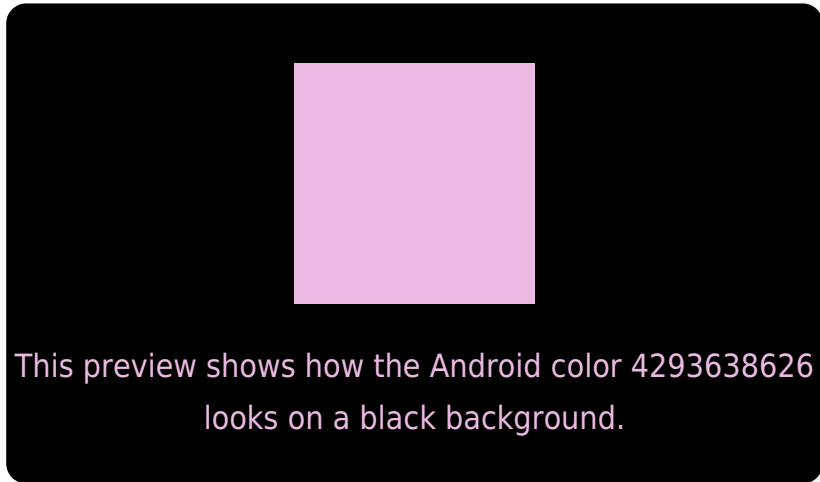
Large Text (above 18pt) WCAG AA × Fail

Any Text WCAG AA × Fail

Large Text (above 18pt) WCAG AAA × Fail

Any Text WCAG AAA × Fail

Black Background



Color Contrast Check

Large Text (above 18pt) WCAG AA ✓ Pass

Any Text WCAG AA ✓ Pass

Large Text (above 18pt) WCAG AAA ✓ Pass

Any Text WCAG AAA ✓ Pass

If you want to check with other color combinations, try the [Color Contrast Checker](#).

Android 4293638626 Background



This preview shows how black text looks on a background with the Android color 4293638626.




This preview shows how white text looks on a background with the Android color 4293638626.

Color Blindness Simulation

Color vision deficiency is a very complex topic, and I could not describe the different causes any better than Wikipedia does, so if you want to learn more, you should check out their [article about color blindness](#).

Dichromacy



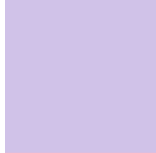


Tritanopia
4293443020

Trichromacy



Original Color
4293638626



Protanomaly
4291871464



Deuteranomaly
4292526049

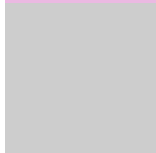


Tritanomaly
4293508308

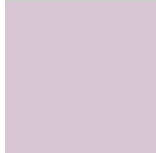
Monochromacy



Original Color
4293638626



Achromatopsia
4291677645



Achromatomaly
4292396757

CSS Examples

Text

The CSS property to change the color of the text to Android 4293638626 is called "color". The color property can be set on classes, ids or directly on the HTML element.

This example shows how text in the color `rgb(235, 185, 226)` looks like.

```
.text, #text, p{  
    color:rgb(235, 185, 226)  
}
```

If you want to add a text shadow in that color use the text-shadow property, you can generate a text shadow directly with our [CSS Text Shadow Generator](#).

Here you see how black text with a 4 pixel rgb(235, 185, 226) colored shadow looks like.

```
.shadow{ text-shadow: 4px 4px 2px rgb(235, 185, 226) }
```

Border

The CSS property to change the border of an element to Android 4293638626 is called "border". The border property can be set on classes, ids or directly on the HTML element.

This example shows the color as border, it can be applied via the CSS property "border" or "border-color".

```
.border, #border, table{ border:4px solid rgb(235, 185, 226) }
```

If only the border color should be changed use the property `border-color`.

```
.border{ border-color:rgb(235, 185, 226) }
```

If you want to add a box shadow in that color use:

Here you see how a box with a 4 pixel `rgb(235, 185, 226)` colored shadow looks like.

```
.boxshadow{ -moz-box-shadow:4px 4px 4px  
4px rgb(235, 185, 226); -webkit-box-  
shadow:4px 4px 4px 4px rgb(235, 185, 226);  
box-shadow:4px 4px 4px 4px rgb(235, 185,  
226) }
```

Background

The CSS property to change the background color of an element to Android 4293638626 is called "background". The background property can be set on classes, ids or directly on the HTML element.

```
.background, #background, body{  
background: rgb(235, 185, 226) }
```

If only the background color should be changed can be used:

```
.background{ background-color: rgb(235,  
185, 226) }
```

This example shows the color as background, it is applied via the CSS property "background".

To optimize and compress your CSS code, you can use our [online CSS compressor and optimizer](#) based on csstidy. If you want to create a linear or radial gradient as background or border, check our [CSS Gradient Generator](#).

Hey! You found this booklet interesting? Support Converting Colors with the new Membership Option!

The pro membership hides all ads, plus gives you double the colors in the color bucket, and more awesome pro features!

[Learn more, Memberships starting at \\$2.50/m!](#)

**Follow me
on Twitter!**

@ConvertingColor