

Converting Colors

Android(4293639403)

Have a look what the booklet for
Android(4293639403) contains.

Android(4293639403)	3
<i>Conversions</i>	4
<i>Details</i>	6
<i>Harmonies</i>	11
<i>Previews</i>	23
<i>Color Blindness Simulation</i>	26
<i>CSS Examples</i>	29

Color

Android(4293639403)

Conversions

Conversions Part 1

Format	Color
Hex	EBBCEB
RGB	235, 188, 235
RGB Percent	92%, 74%, 92%
CMY	0.0784, 0.2627, 0.0784
CMYK	0.00, 0.20, 0.00, 0.08
HSL	300°, 54%, 83%
HSV	300°, 20%, 92%
XYZ	67.2396, 59.6268, 86.5625
YIQ	207.4110, 12.9250, 24.5810

Conversions

Conversions Part 2

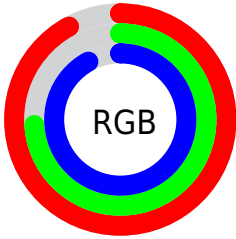
Format	Color
R _Y B	235, 188, 235
Decimal	15449323
CIE Lab	81.63, 24.68, -16.94
CIE LCh	82, 29.933, 325.532
Yxy	59.6268, 0.3150, 0.2794
Android (android.graphics.Color)	4293639403 (0xFFEBBCEB)
YUV	207.4110, 13.6014, 24.1956
Hunter-Lab	77.2184, 20.3006, -12.4118

Details

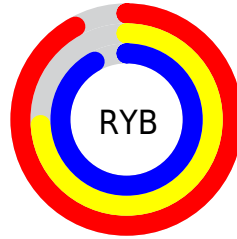
The Android color `4293639403` is a light color, and the websafe version is hex `FFCCFF`. A complement of this color would be `4290571196`, and the grayscale version is `4291809231`.

A 20% lighter version of the original color is `4294964479`, and `4289955507` is the 20% darker color. If you saturate the color by 10%, you get `4293633515`, and if you desaturate by 10%, it is `4293645547`.

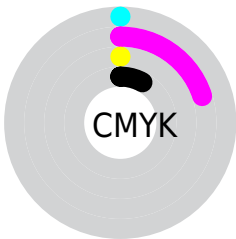
Distribution



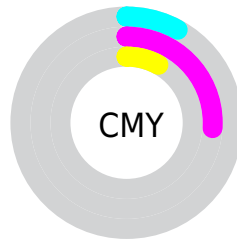
- Red (92%)
- Green (74%)
- Blue (92%)



- Red (92%)
- Yellow (74%)
- Blue (92%)



- Cyan (0%)
- Magenta (20%)
- Yellow (0%)
- Black (8%)



- Cyan (8%)
- Magenta (26%)
- Yellow (8%)

Brightness & Saturation Gradients

These gradients show how the Android color 4293639403 changes by changing the brightness by 10 percent. The first figure shows a shift by +10% for each color and the second figure -10%.

Similar to the brightness gradients but the following saturation gradients show a change of the Android color 4293639403 by changing the saturation by 10% instead.

 4293639403

 4293639403

4294967295

 4291797455

 4294964479

 4289955507

 4288179608

 4286403710

 4284759141

 4283115085

 4281602102

 4280352801

 4278190086

 4293639403

 4293639403

 4293633515

 4293645547

 4293627371

 4293651435

 4293621483

 4293656555

 4293615339

 4293609451

 4293603307

 4293597419

 4293591275

Harmonies

Analogous

The Analogous color harmony consists of three colors that are next to each other on the color wheel.



4291479037



4293639403



4294948816

Triad

The Triadic color harmony groups three colors that are evenly spaced from another and form a triangle on the color wheel.



4293639403



4293118099



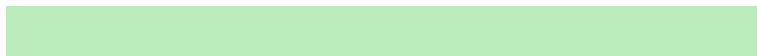
4286044898

Complementary

The Complementary color scheme is a pair of colors which are on the opposite of each other on the color wheel.



4293639403



4290571196

Split Complementary

Split-complementary colors differ from the complementary color scheme. The scheme consists of three colors, the original color and two neighbors of the complement color.



4287158982



4293639403



4291219864

Square

The Square scheme is like the rectangle color scheme, but the four colors are evenly spaced on the color wheel.



4293639403



4294557342



4289124266



4286699256

Rectangle

The Rectangle color scheme consists of four colors that form a rectangle on the color wheel.



4293639403



4294948797



4289124266



4286241753

Sweetspot

The Sweet Spot groups the original color and five complimentary colors.



4293639403



4294963455



4290559211



4286609280



4278190080



4286611584

Same Dimension

The Same Dimension uses a secret algorithm to generate beautiful new colors.



4293639403



4294951679



4293639379



4285885045



4290052277



4281729078

Inverse Universe

The Inverse Universe completely reimagines the original color for something new.



4293639403



4294951679



4290571219



4285885045



4290052277



4281729078

Previews

White Background



This preview shows how the Android color 4293639403 looks on a white background.

Color Contrast Check

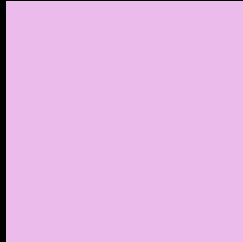
Large Text (above 18pt) WCAG AA × Fail

Any Text WCAG AA × Fail

Large Text (above 18pt) WCAG AAA × Fail

Any Text WCAG AAA × Fail

Black Background



This preview shows how the Android color 4293639403 looks on a black background.

Color Contrast Check

Large Text (above 18pt) WCAG AA ✓ Pass

Any Text WCAG AA ✓ Pass

Large Text (above 18pt) WCAG AAA ✓ Pass

Any Text WCAG AAA ✓ Pass

If you want to check with other color combinations, try the [Color Contrast Checker](#).

Android 4293639403 Background



This preview shows how black text looks on a background with the Android color 4293639403.




This preview shows how white text looks on a background with the Android color 4293639403.

Color Blindness Simulation

Color vision deficiency is a very complex topic, and I could not describe the different causes any better than Wikipedia does, so if you want to learn more, you should check out their [article about color blindness](#).

Dichromacy





Tritanopia
4293378512

Trichromacy



Original Color

4293639403



Protanomaly

4291937521



Deuteranomaly

4292526826



Tritanomaly

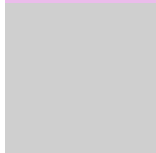
4293443546

Monochromacy



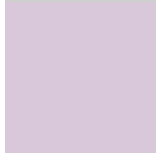
Original Color

4293639403



Achromatopsia

4291809231



Achromatomaly

4292462809

CSS Examples

Text

The CSS property to change the color of the text to Android 4293639403 is called "color". The color property can be set on classes, ids or directly on the HTML element.

This example shows how text in the color `rgb(235, 188, 235)` looks like.

```
.text, #text, p{  
    color:rgb(235, 188, 235)  
}
```

If you want to add a text shadow in that color use the text-shadow property, you can generate a text shadow directly with our [CSS Text Shadow Generator](#).

Here you see how black text with a 4 pixel rgb(235, 188, 235) colored shadow looks like.

```
.shadow{ text-shadow: 4px 4px 2px rgb(235, 188, 235) }
```

Border

The CSS property to change the border of an element to Android 4293639403 is called "border". The border property can be set on classes, ids or directly on the HTML element.

This example shows the color as border, it can be applied via the CSS property "border" or "border-color".

```
.border, #border, table{ border:4px solid rgb(235, 188, 235) }
```

If only the border color should be changed use the property `border-color`.

```
.border{ border-color:rgb(235, 188, 235) }
```

If you want to add a box shadow in that color use:

Here you see how a box with a 4 pixel `rgb(235, 188, 235)` colored shadow looks like.

```
.boxshadow{ -moz-box-shadow:4px 4px 4px  
4px rgb(235, 188, 235); -webkit-box-  
shadow:4px 4px 4px 4px rgb(235, 188, 235);  
box-shadow:4px 4px 4px 4px rgb(235, 188,  
235) }
```

Background

The CSS property to change the background color of an element to Android 4293639403 is called "background". The background property can be set on classes, ids or directly on the HTML element.

```
.background, #background, body{  
background: rgb(235, 188, 235) }
```

If only the background color should be changed can be used:

```
.background{ background-color: rgb(235,  
188, 235) }
```

This example shows the color as background, it is applied via the CSS property "background".

To optimize and compress your CSS code, you can use our [online CSS compressor and optimizer](#) based on csstidy. If you want to create a linear or radial gradient as background or border, check our [CSS Gradient Generator](#).

Hey! You found this booklet interesting? Support Converting Colors with the new Membership Option!

The pro membership hides all ads, plus gives you double the colors in the color bucket, and more awesome pro features!

[Learn more, Memberships starting at \\$2.50/m!](#)

**Follow me
on Twitter!**

@ConvertingColor