

Converting Colors

Android(4293640372)

Have a look what the booklet for
Android(4293640372) contains.

Android(4293640372)	3
<i>Conversions</i>	4
<i>Details</i>	6
<i>Harmonies</i>	11
<i>Previews</i>	23
<i>Color Blindness Simulation</i>	26
<i>CSS Examples</i>	29

Color

Android(4293640372)

Conversions

Conversions Part 1

Format	Color
Hex	EBC0B4
RGB	235, 192, 180
RGB Percent	92%, 75%, 71%
CMY	0.0784, 0.2471, 0.2941
CMYK	0.00, 0.18, 0.23, 0.08
HSL	13°, 58%, 81%
HSV	13°, 23%, 92%
XYZ	61.3488, 58.6567, 51.2685
YIQ	203.4890, 29.4800, 5.3840

Conversions

Conversions Part 2

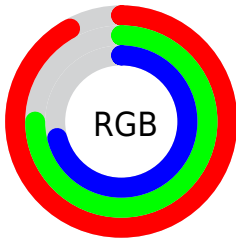
Format	Color
R _Y B	235, 195, 180
Decimal	15450292
CIE Lab	81.10, 13.56, 11.82
CIE LCh	81, 17.993, 41.082
Yxy	58.6567, 0.3582, 0.3425
Android (android.graphics.Color)	4293640372 (0xFFEBC0B4)
YUV	203.4890, -11.5801, 27.6351
Hunter-Lab	76.5877, 8.9549, 13.9221

Details

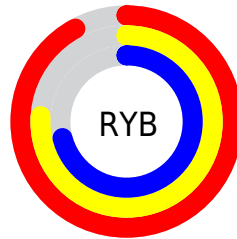
The Android color `4293640372` is a light color, and the websafe version is hex `FFCCCC`. A complement of this color would be `4290043883`, and the grayscale version is `4291611852`.

A 20% lighter version of the original color is `4294965484`, and `4289890943` is the 20% darker color. If you saturate the color by 10%, you get `4293635741`, and if you desaturate by 10%, it is `4293645004`.

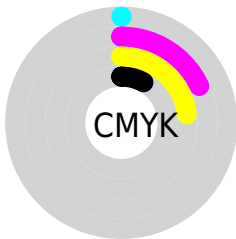
Distribution



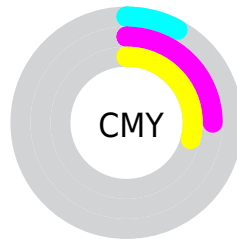
- Red (92%)
- Green (75%)
- Blue (71%)



- Red (92%)
- Yellow (76%)
- Blue (71%)



- Cyan (0%)
- Magenta (18%)
- Yellow (23%)
- Black (8%)



- Cyan (8%)
- Magenta (25%)
- Yellow (29%)

Brightness & Saturation Gradients

These gradients show how the Android color 4293640372 changes by changing the brightness by 10 percent. The first figure shows a shift by +10% for each color and the second figure -10%.

Similar to the brightness gradients but the following saturation gradients show a change of the Android color 4293640372 by changing the saturation by 10% instead.

 4293640372

 4293640372

4294967295

 4291732889

 4294965484

 4289890943

 4288115046

 4286404686

 4284694839

 4283050786

 4281472524

 4280090624

 4278190080

 4293640372

 4293640372

 4293635741

 4293645004

 4293630853

 4293649891

 4293626222

 4293654523

 4293621590

 4293656575

 4293616703

 4293612071

 4293607184

 4293604096

Harmonies

Analogous

The Analogous color harmony consists of three colors that are next to each other on the color wheel.



4293770948



4293640372



4292986282

Triad

The Triadic color harmony groups three colors that are evenly spaced from another and form a triangle on the color wheel.



4293640372



4289450686



4290759146

Complementary

The Complementary color scheme is a pair of colors which are on the opposite of each other on the color wheel.



4293640372



4290043883

Split Complementary

Split-complementary colors differ from the complementary color scheme. The scheme consists of three colors, the original color and two neighbors of the complement color.



4289449705



4293640372



4288664527

Square

The Square scheme is like the rectangle color scheme, but the four colors are evenly spaced on the color wheel.



4293640372



4290629552



4288598751



4292133859

Rectangle

The Rectangle color scheme consists of four colors that form a rectangle on the color wheel.



4293640372



4292266152



4288598751



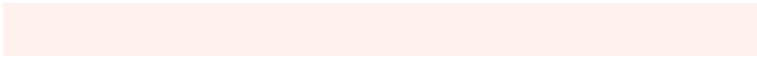
4290300907

Sweetspot

The Sweet Spot groups the original color and five complimentary colors.



4293640372



4294963693



4293637343



4286609525



4278190080



4286611584

Same Dimension

The Same Dimension uses a secret algorithm to generate beautiful new colors.



4293640372



4294952888



4293647284



4285885546



4290062336



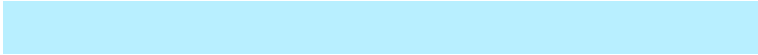
4281732096

Inverse Universe

The Inverse Universe completely reimagines the original color for something new.



4290043883



4290310143



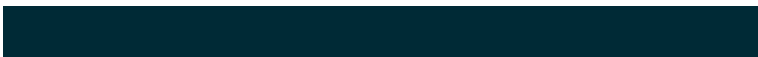
4290036971



4285166453



4278226613



4278200886

Previews

White Background



This preview shows how the Android color 4293640372 looks on a white background.

Color Contrast Check

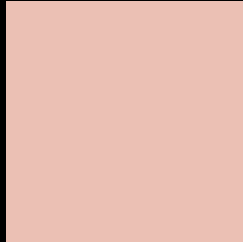
Large Text (above 18pt) WCAG AA × Fail

Any Text WCAG AA × Fail

Large Text (above 18pt) WCAG AAA × Fail

Any Text WCAG AAA × Fail

Black Background



This preview shows how the Android color 4293640372 looks on a black background.

Color Contrast Check

Large Text (above 18pt) WCAG AA ✓ Pass

Any Text WCAG AA ✓ Pass

Large Text (above 18pt) WCAG AAA ✓ Pass

Any Text WCAG AAA ✓ Pass

If you want to check with other color combinations, try the [Color Contrast Checker](#).

Android 4293640372 Background



This preview shows how black text looks on a background with the Android color 4293640372.

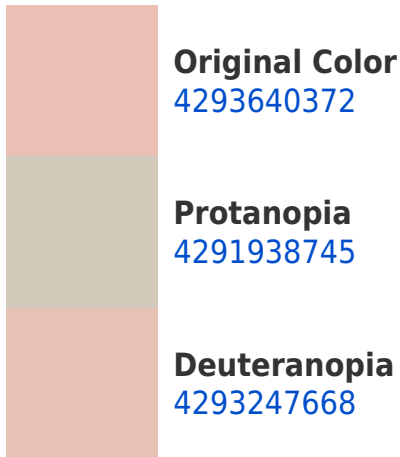


This preview shows how white text looks on a background with the Android color 4293640372.

Color Blindness Simulation

Color vision deficiency is a very complex topic, and I could not describe the different causes any better than Wikipedia does, so if you want to learn more, you should check out their [article about color blindness](#).

Dichromacy





Tritanopia
4293836235

Trichromacy



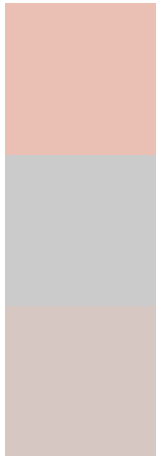
Original Color
4293640372

Protanomaly
4292527799

Deuteranomaly
4293378484

Tritanomaly
4293770947

Monochromacy



Original Color
4293640372

Achromatopsia
4291546059

Achromatomaly
4292331459

CSS Examples

Text

The CSS property to change the color of the text to Android 4293640372 is called "color". The color property can be set on classes, ids or directly on the HTML element.

This example shows how text in the color `rgb(235, 192, 180)` looks like.

```
.text, #text, p{  
    color:rgb(235, 192, 180)  
}
```

If you want to add a text shadow in that color use the text-shadow property, you can generate a text shadow directly with our [CSS Text Shadow Generator](#).

Here you see how black text with a 4 pixel rgb(235, 192, 180) colored shadow looks like.

```
.shadow{ text-shadow: 4px 4px 2px rgb(235, 192, 180) }
```

Border

The CSS property to change the border of an element to Android 4293640372 is called "border". The border property can be set on classes, ids or directly on the HTML element.

This example shows the color as border, it can be applied via the CSS property "border" or "border-color".

```
.border, #border, table{ border:4px solid rgb(235, 192, 180) }
```

If only the border color should be changed use the property border-color.

```
.border{ border-color:rgb(235, 192, 180) }
```

If you want to add a box shadow in that color use:

Here you see how a box with a 4 pixel rgb(235, 192, 180) colored shadow looks like.

```
.boxshadow{ -moz-box-shadow:4px 4px 4px  
4px rgb(235, 192, 180); -webkit-box-  
shadow:4px 4px 4px 4px rgb(235, 192, 180);  
box-shadow:4px 4px 4px 4px rgb(235, 192,  
180) }
```

Background

The CSS property to change the background color of an element to Android 4293640372 is called "background". The background property can be set on classes, ids or directly on the HTML element.

```
.background, #background, body{  
background: rgb(235, 192, 180) }
```

If only the background color should be changed can be used:

```
.background{ background-color: rgb(235,  
192, 180) }
```

This example shows the color as background, it is applied via the CSS property "background".

To optimize and compress your CSS code, you can use our [online CSS compressor and optimizer](#) based on csstidy. If you want to create a linear or radial gradient as background or border, check our [CSS Gradient Generator](#).

Hey! You found this booklet interesting? Support Converting Colors with the new Membership Option!

The pro membership hides all ads, plus gives you double the colors in the color bucket, and more awesome pro features!

[Learn more, Memberships starting at \\$2.50/m!](#)

**Follow me
on Twitter!**

@ConvertingColor