

Converting Colors

Android(4293642171)

Have a look what the booklet for
Android(4293642171) contains.

Android(4293642171)	3
<i>Conversions</i>	4
<i>Details</i>	6
<i>Harmonies</i>	11
<i>Previews</i>	23
<i>Color Blindness Simulation</i>	26
<i>CSS Examples</i>	29

Color

Android(4293642171)

Conversions

Conversions Part 1

Format	Color
Hex	EBC7BB
RGB	235, 199, 187
RGB Percent	92%, 78%, 73%
CMY	0.0784, 0.2196, 0.2667
CMYK	0.00, 0.15, 0.20, 0.08
HSL	15°, 55%, 83%
HSV	15°, 20%, 92%
XYZ	63.6540, 62.0969, 55.6447
YIQ	208.3960, 25.3080, 3.9000

Conversions

Conversions Part 2

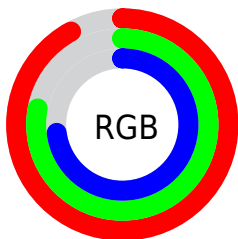
Format	Color
R_{YB}	235, 203, 187
Decimal	15452091
CIE _{Lab}	82.96, 10.88, 10.73
CIE _{LCh}	83, 15.280, 44.594
Yxy	62.0969, 0.3509, 0.3423
Android (android.graphics.Color)	4293642171 (0xFFEBC7BB)
YUV	208.3960, -10.5482, 23.3317
Hunter-Lab	78.8016, 6.2853, 13.2943

Details

The Android color `4293642171` is a light color, and the websafe version is hex `FFCCCC`. A complement of this color would be `4290502635`, and the grayscale version is `4291875024`.

A 20% lighter version of the original color is `4294967283`, and `4289958278` is the 20% darker color. If you saturate the color by 10%, you get `4293637540`, and if you desaturate by 10%, it is `4293646803`.

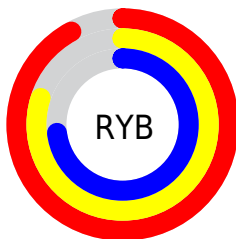
Distribution



Red (92%)

Green (78%)

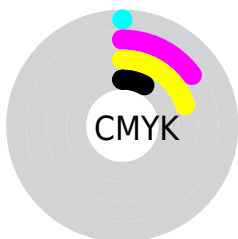
Blue (73%)



Red (92%)

Yellow (80%)

Blue (73%)

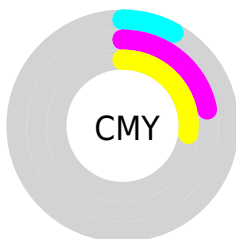


Cyan (0%)

Magenta (15%)

Yellow (20%)

Black (8%)



Cyan (8%)

Magenta (22%)

Yellow (27%)

Brightness & Saturation Gradients

These gradients show how the Android color 4293642171 changes by changing the brightness by 10 percent. The first figure shows a shift by +10% for each color and the second figure -10%.

Similar to the brightness gradients but the following saturation gradients show a change of the Android color 4293642171 by changing the saturation by 10% instead.

 4293642171

 4293642171

4294967295

 4291800224

 4294967283

 4289958278

 4288182125

 4286406484

 4284761917

 4283117607

 4281539347

 4280222208

 4278190080

 4293642171

 4293642171

 4293637540

 4293646803

 4293633164

 4293651178

 4293628533

 4293655807

 4293624157

 4293656575

 4293619526

 4293614894

 4293610519

 4293606144

Harmonies

Analogous

The Analogous color harmony consists of three colors that are next to each other on the color wheel.



4293772744



4293642171



4292987827

Triad

The Triadic color harmony groups three colors that are evenly spaced from another and form a triangle on the color wheel.



4293642171



4289976262



4291349994

Complementary

The Complementary color scheme is a pair of colors which are on the opposite of each other on the color wheel.



4293642171



4290502635

Split Complementary

Split-complementary colors differ from the complementary color scheme. The scheme consists of three colors, the original color and two neighbors of the complement color.



4290237162



4293642171



4289451989

Square

The Square scheme is like the rectangle color scheme, but the four colors are evenly spaced on the color wheel.



4293642171



4290958522



4289517282



4292528611

Rectangle

The Rectangle color scheme consists of four colors that form a rectangle on the color wheel.



4293642171



4292398770



4289517282



4290957291

Sweetspot

The Sweet Spot groups the original color and five complimentary colors.



4293642171



4294964464



4293639135



4286609783



4278190080



4286611584

Same Dimension

The Same Dimension uses a secret algorithm to generate beautiful new colors.



4293642171



4294954943



4293648315



4285885802



4290063616



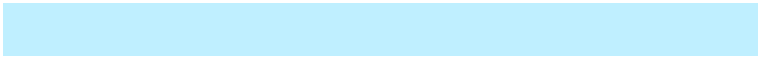
4281732352

Inverse Universe

The Inverse Universe completely reimagines the original color for something new.



4290502635



4290768895



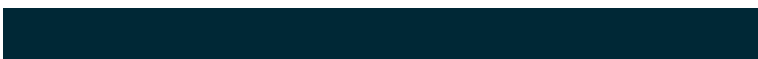
4290496491



4285166197



4278225077



4278200374

Previews

White Background



This preview shows how the Android color 4293642171 looks on a white background.

Color Contrast Check

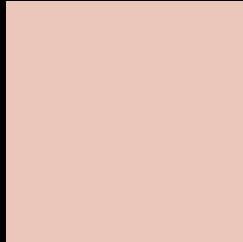
Large Text (above 18pt) WCAG AA × Fail

Any Text WCAG AA × Fail

Large Text (above 18pt) WCAG AAA × Fail

Any Text WCAG AAA × Fail

Black Background



This preview shows how the Android color 4293642171 looks on a black background.

Color Contrast Check

Large Text (above 18pt) WCAG AA ✓ Pass

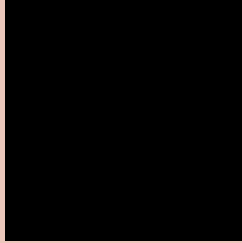
Any Text WCAG AA ✓ Pass

Large Text (above 18pt) WCAG AAA ✓ Pass

Any Text WCAG AAA ✓ Pass

If you want to check with other color combinations, try the [Color Contrast Checker](#).

Android 4293642171 Background



This preview shows how black text looks on a background with the Android color 4293642171.

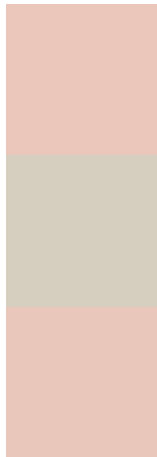


This preview shows how white text looks on a background with the Android color 4293642171.

Color Blindness Simulation

Color vision deficiency is a very complex topic, and I could not describe the different causes any better than Wikipedia does, so if you want to learn more, you should check out their [article about color blindness](#).

Dichromacy



Original Color
4293642171

Protanopia
4292267711

Deuteranopia
4293576635



Tritanopia
4293837779

Trichromacy



Original Color
4293642171

Protanomaly
4292791230

Deuteranomaly
4293576635

Tritanomaly
4293772490

Monochromacy



Original Color
4293642171

Achromatopsia
4291875024

Achromatomaly
4292529608

CSS Examples

Text

The CSS property to change the color of the text to Android 4293642171 is called "color". The color property can be set on classes, ids or directly on the HTML element.

This example shows how text in the color `rgb(235, 199, 187)` looks like.

```
.text, #text, p{  
    color:rgb(235, 199, 187)  
}
```

If you want to add a text shadow in that color use the text-shadow property, you can generate a text shadow directly with our [CSS Text Shadow Generator](#).

Here you see how black text with a 4 pixel rgb(235, 199, 187) colored shadow looks like.

```
.shadow{ text-shadow: 4px 4px 2px rgb(235, 199, 187) }
```

Border

The CSS property to change the border of an element to Android 4293642171 is called "border". The border property can be set on classes, ids or directly on the HTML element.

This example shows the color as border, it can be applied via the CSS property "border" or "border-color".

```
.border, #border, table{ border:4px solid rgb(235, 199, 187) }
```

If only the border color should be changed use the property `border-color`.

```
.border{ border-color:rgb(235, 199, 187) }
```

If you want to add a box shadow in that color use:

Here you see how a box with a 4 pixel `rgb(235, 199, 187)` colored shadow looks like.

```
.boxshadow{ -moz-box-shadow:4px 4px 4px  
4px rgb(235, 199, 187); -webkit-box-  
shadow:4px 4px 4px 4px rgb(235, 199, 187);  
box-shadow:4px 4px 4px 4px rgb(235, 199,  
187) }
```

Background

The CSS property to change the background color of an element to Android 4293642171 is called "background". The background property can be set on classes, ids or directly on the HTML element.

```
.background, #background, body{  
background: rgb(235, 199, 187) }
```

If only the background color should be changed can be used:

```
.background{ background-color: rgb(235,  
199, 187) }
```

This example shows the color as background, it is applied via the CSS property "background".

To optimize and compress your CSS code, you can use our [online CSS compressor and optimizer](#) based on csstidy. If you want to create a linear or radial gradient as background or border, check our [CSS Gradient Generator](#).

Hey! You found this booklet interesting? Support Converting Colors with the new Membership Option!

The pro membership hides all ads, plus gives you double the colors in the color bucket, and more awesome pro features!

[Learn more, Memberships starting at \\$2.50/m!](#)

**Follow me
on Twitter!**

@ConvertingColor