

# Converting Colors

Android(4293644754)

Have a look what the booklet for  
Android(4293644754) contains.

<b>Android(4293644754)</b> .....	3
<b><i>Conversions</i></b> .....	4
<b><i>Details</i></b> .....	6
<b><i>Harmonies</i></b> .....	11
<b><i>Previews</i></b> .....	23
<b><i>Color Blindness Simulation</i></b> .....	26
<b><i>CSS Examples</i></b> .....	29

# **Color**

**Android(4293644754)**

# Conversions

## Conversions Part 1

Format	Color
Hex	EBD1D2
RGB	235, 209, 210
RGB Percent	92%, 82%, 82%
CMY	0.0784, 0.1804, 0.1765
CMYK	0.00, 0.11, 0.11, 0.08
HSL	358°, 39%, 87%
HSV	358°, 11%, 92%
XYZ	68.6943, 67.9162, 70.4613
YIQ	216.8880, 15.1750, 5.8230

# Conversions

## Conversions Part 2

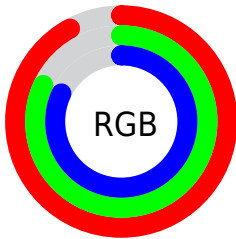
Format	Color
R <sub>Y</sub> B	235, 209, 210
Decimal	15454674
CIE Lab	85.96, 9.21, 2.81
CIE LCh	86, 9.625, 16.966
Yxy	67.9162, 0.3317, 0.3280
Android (android.graphics.Color)	4293644754 (0xFFEBD1D2)
YUV	216.8880, -3.3958, 15.8842
Hunter-Lab	82.4113, 4.5696, 6.9952

# Details

The Android color `4293644754` is a light color, and the websafe version is hex `FFCCCC`. A complement of this color would be `4291947498`, and the grayscale version is `4292467161`.

A 20% lighter version of the original color is `4294967295`, and `4289960860` is the 20% darker color. If you saturate the color by 10%, you get `4293638843`, and if you desaturate by 10%, it is `4293650921`.

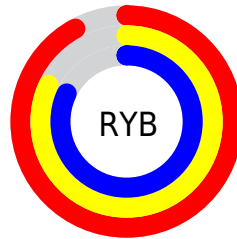
# Distribution



Red (92%)

Green (82%)

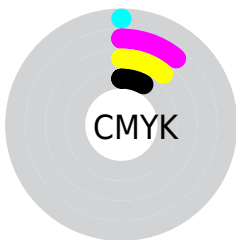
Blue (82%)



Red (92%)

Yellow (82%)

Blue (82%)

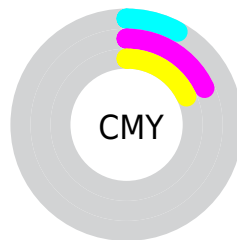


Cyan (0%)

Magenta (11%)

Yellow (11%)

Black (8%)



Cyan (8%)

Magenta (18%)

Yellow (18%)

# Brightness & Saturation Gradients

These gradients show how the Android color 4293644754 changes by changing the brightness by 10 percent. The first figure shows a shift by +10% for each color and the second figure -10%.


Similar to the brightness gradients but the following saturation gradients show a change of the Android color 4293644754 by changing the saturation by 10% instead.



 4293644754

 4293644754

4294967295

 4291802550


 4289960860

 4288184706

 4286474088

 4284829520

 4283250746

 4281738020

 4280356367

 4278190080

 4293644754

 4293644754

 4293638843

 4293650921

 4293632677

 4293656575

 4293626766

 4293620600

 4293614689

 4293608522

 4293602612

 4293596445

 4293591049

# Harmonies

## Analogous

The Analogous color harmony consists of three colors that are next to each other on the color wheel.



4293382619



4293644754



4293513930

# Triad

The Triadic color harmony groups three colors that are evenly spaced from another and form a triangle on the color wheel.



4293644754



4291746762



4291418600

# Complementary

The Complementary color scheme is a pair of colors which are on the opposite of each other on the color wheel.



4293644754



4291947498

# Split Complementary

Split-complementary colors differ from the complementary color scheme. The scheme consists of three colors, the original color and two neighbors of the complement color.



4290960356



4293644754



4291222739

# Square

The Square scheme is like the rectangle color scheme, but the four colors are evenly spaced on the color wheel.



4293644754



4292466886



4290895068



4292138728

# Rectangle

The Rectangle color scheme consists of four colors that form a rectangle on the color wheel.



4293644754



4293252294



4290895068



4291222247



# Sweetspot

The Sweet Spot groups the original color and five complimentary colors.



4293644754



4294965240



4293579243



4286610043



4278190080



4286611584

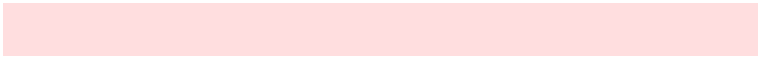


# Same Dimension

The Same Dimension uses a secret algorithm to generate beautiful new colors.



4293644754



4294958815



4293647825



4285885034



4290052103



4281729026

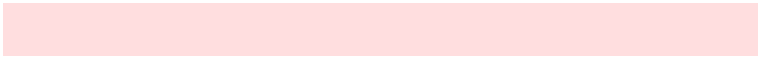


# Inverse Universe

The Inverse Universe completely reimagines the original color for something new.



4293644754



4294958815



4291944427



4285885034



4290052103

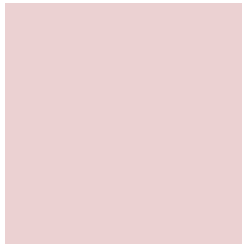


4281729026



# Previews

## White Background



This preview shows how the Android color 4293644754 looks on a white background.

## Color Contrast Check

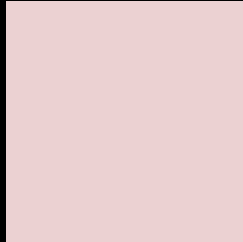
Large Text (above 18pt) WCAG AA × Fail

Any Text WCAG AA × Fail

Large Text (above 18pt) WCAG AAA × Fail

Any Text WCAG AAA × Fail

# Black Background



This preview shows how the Android color 4293644754 looks on a black background.

## Color Contrast Check

Large Text (above 18pt) WCAG AA ✓ Pass

Any Text WCAG AA ✓ Pass

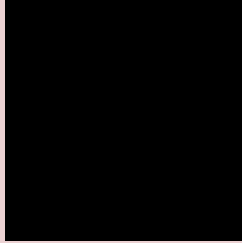
Large Text (above 18pt) WCAG AAA ✓ Pass

Any Text WCAG AAA ✓ Pass

If you want to check with other color combinations, try the [Color Contrast Checker](#).



# Android 4293644754 Background



This preview shows how black text looks on a background with the Android color 4293644754.



This preview shows how white text looks on a background with the Android color 4293644754.

# Color Blindness Simulation

Color vision deficiency is a very complex topic, and I could not describe the different causes any better than Wikipedia does, so if you want to learn more, you should check out their [article about color blindness](#).

## Dichromacy



**Original Color**  
4293644754

**Protanopia**  
4292597461

**Deuteranopia**  
4293841106



**Tritanopia**  
4293775327

# Trichromacy



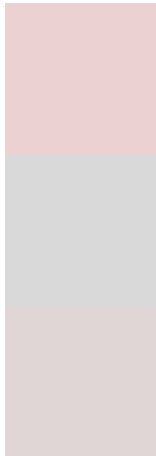
**Original Color**  
4293644754

**Protanomaly**  
4292990164

**Deuteranomaly**  
4293775570

**Tritanomaly**  
4293710042

# Monochromacy



**Original Color**  
4293644754

**Achromatopsia**  
4292467161

**Achromatomaly**  
4292925142

# CSS Examples

## Text

The CSS property to change the color of the text to Android 4293644754 is called "color". The color property can be set on classes, ids or directly on the HTML element.

This example shows how text in the color `rgb(235, 209, 210)` looks like.

```
.text, #text, p{  
    color:rgb(235, 209, 210)  
}
```

If you want to add a text shadow in that color use the text-shadow property, you can generate a text shadow directly with our [CSS Text Shadow Generator](#).

Here you see how black text with a 4 pixel rgb(235, 209, 210) colored shadow looks like.

```
.shadow{ text-shadow: 4px 4px 2px rgb(235, 209, 210) }
```

## Border

The CSS property to change the border of an element to Android 4293644754 is called "border". The border property can be set on classes, ids or directly on the HTML element.

This example shows the color as border, it can be applied via the CSS property "border" or "border-color".

```
.border, #border, table{ border:4px solid rgb(235, 209, 210) }
```

If only the border color should be changed use the property `border-color`.

```
.border{ border-color:rgb(235, 209, 210) }
```

If you want to add a box shadow in that color use:

Here you see how a box with a 4 pixel `rgb(235, 209, 210)` colored shadow looks like.

```
.boxshadow{ -moz-box-shadow:4px 4px 4px  
4px rgb(235, 209, 210); -webkit-box-  
shadow:4px 4px 4px 4px rgb(235, 209, 210);  
box-shadow:4px 4px 4px 4px rgb(235, 209,  
210) }
```

# Background

The CSS property to change the background color of an element to Android 4293644754 is called "background". The background property can be set on classes, ids or directly on the HTML element.

```
.background, #background, body{  
background: rgb(235, 209, 210) }
```

If only the background color should be changed can be used:

```
.background{ background-color: rgb(235,  
209, 210) }
```

This example shows the color as background, it is applied via the CSS property "background".

To optimize and compress your CSS code, you can use our [online CSS compressor and optimizer](#) based on csstidy. If you want to create a linear or radial gradient as background or border, check our [CSS Gradient Generator](#).



Hey! You found this booklet interesting? Support Converting Colors with the new Membership Option!

The pro membership hides all ads, plus gives you double the colors in the color bucket, and more awesome pro features!

**[Learn more, Memberships starting at \\$2.50/m!](#)**

**Follow me  
on Twitter!**

@ConvertingColor