

Converting Colors

Android(4293645267)

Have a look what the booklet for
Android(4293645267) contains.

Android(4293645267)	3
<i>Conversions</i>	4
<i>Details</i>	6
<i>Harmonies</i>	11
<i>Previews</i>	23
<i>Color Blindness Simulation</i>	26
<i>CSS Examples</i>	29

Color

Android(4293645267)

Conversions

Conversions Part 1

Format	Color
Hex	EBD3D3
RGB	235, 211, 211
RGB Percent	92%, 83%, 83%
CMY	0.0784, 0.1725, 0.1725
CMYK	0.00, 0.10, 0.10, 0.08
HSL	0°, 37%, 87%
HSV	0°, 10%, 92%
XYZ	69.3131, 68.9538, 71.2842
YIQ	218.1760, 14.3040, 5.0880

Conversions

Conversions Part 2

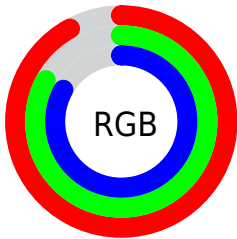
Format	Color
R _Y B	235, 211, 211
Decimal	15455187
CIE Lab	86.48, 8.32, 3.03
CIE LCh	86, 8.856, 19.997
Yxy	68.9538, 0.3308, 0.3291
Android (android.graphics.Color)	4293645267 (0xFFEBD3D3)
YUV	218.1760, -3.5378, 14.7546
Hunter-Lab	83.0385, 3.6786, 7.2295

Details

The Android color `4293645267` is a light color, and the websafe version is hex `CCCCCC`. A complement of this color would be `4292078571`, and the grayscale version is `4292532954`.

A 20% lighter version of the original color is `4294967295`, and `4289961117` is the 20% darker color. If you saturate the color by 10%, you get `4293639099`, and if you desaturate by 10%, it is `4293651178`.

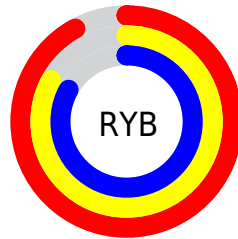
Distribution



Red (92%)

Green (83%)

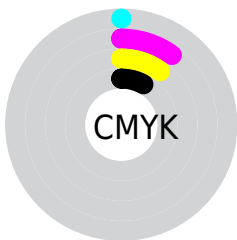
Blue (83%)



Red (92%)

Yellow (83%)

Blue (83%)

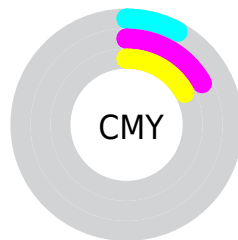


Cyan (0%)

Magenta (10%)

Yellow (10%)

Black (8%)



Cyan (8%)

Magenta (17%)

Yellow (17%)

Brightness & Saturation Gradients

These gradients show how the Android color 4293645267 changes by changing the brightness by 10 percent. The first figure shows a shift by +10% for each color and the second figure -10%.

Similar to the brightness gradients but the following saturation gradients show a change of the Android color 4293645267 by changing the saturation by 10% instead.

 4293645267

 4293645267

4294967295

 4291803063

 4289961117

 4288184962

 4286474601

 4284830033

 4283251258

 4281738277

 4280356880

 4278190080

 4293645267

 4293645267

 4293639099

 4293651178

 4293633188

 4293656575

 4293627277

 4293621109

 4293615198

 4293609030

 4293603119

 4293596951

 4293591040

Harmonies

Analogous

The Analogous color harmony consists of three colors that are next to each other on the color wheel.



4293448668



4293645267



4293514444

Triad

The Triadic color harmony groups three colors that are evenly spaced from another and form a triangle on the color wheel.



4293645267



4291878093



4291681001

Complementary

The Complementary color scheme is a pair of colors which are on the opposite of each other on the color wheel.



4293645267



4292078571

Split Complementary

Split-complementary colors differ from the complementary color scheme. The scheme consists of three colors, the original color and two neighbors of the complement color.



4291222757



4293645267



4291354069

Square

The Square scheme is like the rectangle color scheme, but the four colors are evenly spaced on the color wheel.



4293645267



4292467401



4291091934



4292335592

Rectangle

The Rectangle color scheme consists of four colors that form a rectangle on the color wheel.



4293645267



4293252809



4291091934



4291484648

Sweetspot

The Sweet Spot groups the original color and five complimentary colors.



4293645267



4294965239



4293645291



4286610042



4278190080



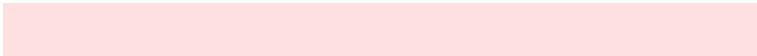
4286611584

Same Dimension

The Same Dimension uses a secret algorithm to generate beautiful new colors.



4293645267



4294959328



4293648339



4285885034



4290052096



4281729024

Inverse Universe

The Inverse Universe completely reimagines the original color for something new.



4292078571



4292935679



4292075499



4285166965



4278236597



4278203958

Previews

White Background



This preview shows how the Android color 4293645267 looks on a white background.

Color Contrast Check

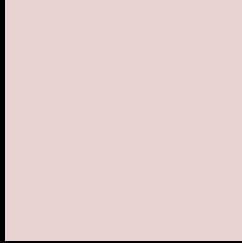
Large Text (above 18pt) WCAG AA × Fail

Any Text WCAG AA × Fail

Large Text (above 18pt) WCAG AAA × Fail

Any Text WCAG AAA × Fail

Black Background



This preview shows how the Android color 4293645267 looks on a black background.

Color Contrast Check

Large Text (above 18pt) WCAG AA ✓ Pass

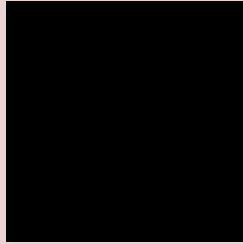
Any Text WCAG AA ✓ Pass

Large Text (above 18pt) WCAG AAA ✓ Pass

Any Text WCAG AAA ✓ Pass

If you want to check with other color combinations, try the [Color Contrast Checker](#).

Android 4293645267 Background



This preview shows how black text looks on a background with the Android color 4293645267.

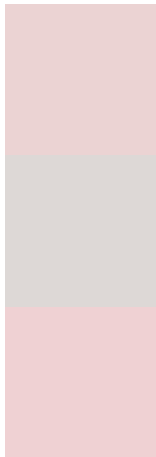


This preview shows how white text looks on a background with the Android color 4293645267.

Color Blindness Simulation

Color vision deficiency is a very complex topic, and I could not describe the different causes any better than Wikipedia does, so if you want to learn more, you should check out their [article about color blindness](#).

Dichromacy



Original Color
4293645267

Protanopia
4292729046

Deuteranopia
4293906899



Tritanopia
4293775841

Trichromacy



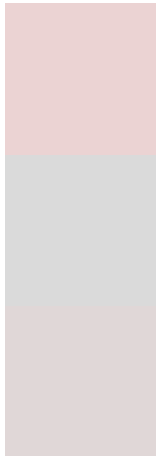
Original Color
4293645267

Protanomaly
4293056213

Deuteranomaly
4293841619

Tritanomaly
4293710556

Monochromacy



Original Color
4293645267

Achromatopsia
4292532954

Achromatomaly
4292925399

CSS Examples

Text

The CSS property to change the color of the text to Android 4293645267 is called "color". The color property can be set on classes, ids or directly on the HTML element.

This example shows how text in the color `rgb(235, 211, 211)` looks like.

```
.text, #text, p{  
    color:rgb(235, 211, 211)  
}
```

If you want to add a text shadow in that color use the text-shadow property, you can generate a text shadow directly with our [CSS Text Shadow Generator](#).

Here you see how black text with a 4 pixel rgb(235, 211, 211) colored shadow looks like.

```
.shadow{ text-shadow: 4px 4px 2px rgb(235, 211, 211) }
```

Border

The CSS property to change the border of an element to Android 4293645267 is called "border". The border property can be set on classes, ids or directly on the HTML element.

This example shows the color as border, it can be applied via the CSS property "border" or "border-color".

```
.border, #border, table{ border:4px solid rgb(235, 211, 211) }
```

If only the border color should be changed use the property `border-color`.

```
.border{ border-color:rgb(235, 211, 211) }
```

If you want to add a box shadow in that color use:

Here you see how a box with a 4 pixel `rgb(235, 211, 211)` colored shadow looks like.

```
.boxshadow{ -moz-box-shadow:4px 4px 4px  
4px rgb(235, 211, 211); -webkit-box-  
shadow:4px 4px 4px 4px rgb(235, 211, 211);  
box-shadow:4px 4px 4px 4px rgb(235, 211,  
211) }
```

Background

The CSS property to change the background color of an element to Android 4293645267 is called "background". The background property can be set on classes, ids or directly on the HTML element.

```
.background, #background, body{  
background: rgb(235, 211, 211) }
```

If only the background color should be changed can be used:

```
.background{ background-color: rgb(235,  
211, 211) }
```

This example shows the color as background, it is applied via the CSS property "background".

To optimize and compress your CSS code, you can use our [online CSS compressor and optimizer](#) based on csstidy. If you want to create a linear or radial gradient as background or border, check our [CSS Gradient Generator](#).

Hey! You found this booklet interesting? Support Converting Colors with the new Membership Option!

The pro membership hides all ads, plus gives you double the colors in the color bucket, and more awesome pro features!

[Learn more, Memberships starting at \\$2.50/m!](#)

**Follow me
on Twitter!**

@ConvertingColor