

# Converting Colors

Android(4293661544)

Have a look what the booklet for  
Android(4293661544) contains.

<b>Android(4293661544)</b> .....	3
<i><b>Conversions</b></i> .....	4
<i><b>Details</b></i> .....	6
<i><b>Harmonies</b></i> .....	11
<i><b>Previews</b></i> .....	23
<i><b>Color Blindness Simulation</b></i> .....	26
<i><b>CSS Examples</b></i> .....	29

**Color**

**Android(4293661544)**

# Conversions

## Conversions Part 1

Format	Color
Hex	EC1368
RGB	236, 19, 104
RGB Percent	93%, 7%, 41%
CMY	0.0745, 0.9255, 0.5922
CMYK	0.00, 0.92, 0.56, 0.07
HSL	336°, 85%, 50%
HSV	336°, 92%, 93%
XYZ	37.3236, 19.2981, 14.8544
YIQ	93.5730, 102.0470, 72.4390

# Conversions

## Conversions Part 2

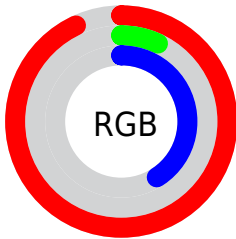
<b>Format</b>	<b>Color</b>
R <sub>Y</sub> B	236, 19, 104
Decimal	15471464
CIE Lab	51.03, 77.20, 12.62
CIE LCh	51, 78.228, 9.282
Yxy	19.2981, 0.5222, 0.2700
Android (android.graphics.Color)	4293661544 (0xFFEC1368)
YUV	93.5730, 5.1405, 124.9085
Hunter-Lab	43.9296, 74.7811, 10.7023

# Details

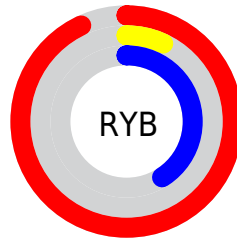
The Android color **4293661544** is a dark color, and the websafe version is hex **FF0066**. The color can be described as dark washed rose. A complement of this color would be **4279495831**, and the grayscale version is **4284308829**.

A 20% lighter version of the original color is **4294927259**, and **4289527866** is the 20% darker color. If you saturate the color by 10%, you get **4293656668**, and if you desaturate by 10%, it is **4293667702**.

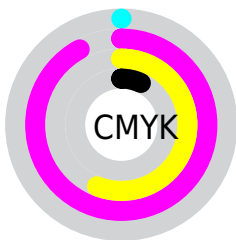
# Distribution



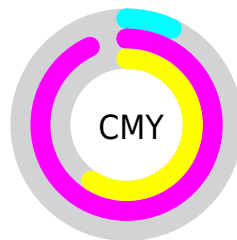
- Red (93%)
- Green (7%)
- Blue (41%)



- Red (93%)
- Yellow (7%)
- Blue (41%)



- Cyan (0%)
- Magenta (92%)
- Yellow (56%)
- Black (7%)



- Cyan (7%)
- Magenta (93%)
- Yellow (59%)

# Brightness & Saturation Gradients

These gradients show how the Android color 4293661544 changes by changing the brightness by 10 percent. The first figure shows a shift by +10% for each color and the second figure -10%.


Similar to the brightness gradients but the following saturation gradients show a change of the Android color 4293661544 by changing the saturation by 10% instead.



 4293661544

 4293661544

4294967295

 4291559504

 4294927259

 4289527866

 4294935221

 4287430693

 4294942929

 4285464592

 4294950637

 4283498500

 4294958335

 4281401346

 4294966271

 4278190080

 4293661544

 4293661544

 4293656668

 4293667702

 4293673605

 4293679763

 4293685665

 4293691824

 4293697982

 4293703884

 4293710043

 4293715945

# Harmonies

## Analogous

The Analogous color harmony consists of three colors that are next to each other on the color wheel.



4292226986



4293661544



4292820775

# Triad

The Triadic color harmony groups three colors that are evenly spaced from another and form a triangle on the color wheel.



4293661544



4281437184



4278226680

# Complementary

The Complementary color scheme is a pair of colors which are on the opposite of each other on the color wheel.



4293661544



4279495831

# Split Complementary

Split-complementary colors differ from the complementary color scheme. The scheme consists of three colors, the original color and two neighbors of the complement color.



4278228429



4293661544



4278227783

# Square

The Square scheme is like the rectangle color scheme, but the four colors are evenly spaced on the color wheel.



4293661544



4286676480



4278228621



4278222079

# Rectangle

The Rectangle color scheme consists of four colors that form a rectangle on the color wheel.



4293661544



4291254528



4278228621



4278227437



# Sweetspot

The Sweet Spot groups the original color and five complimentary colors.



4293661544



4294949076



4287960044



4286600293



4278190080



4286611584



# Same Dimension

The Same Dimension uses a secret algorithm to generate beautiful new colors.



4293661544



4294901860



4293667091



4285885038



4290052167



4281729045



# Inverse Universe

The Inverse Universe completely reimagines the original color for something new.



4293661544



4294901860



4279490284



4285885038



4290052167



4281729045



# Previews

## White Background



This preview shows how the Android color 4293661544 looks on a white background.

## Color Contrast Check

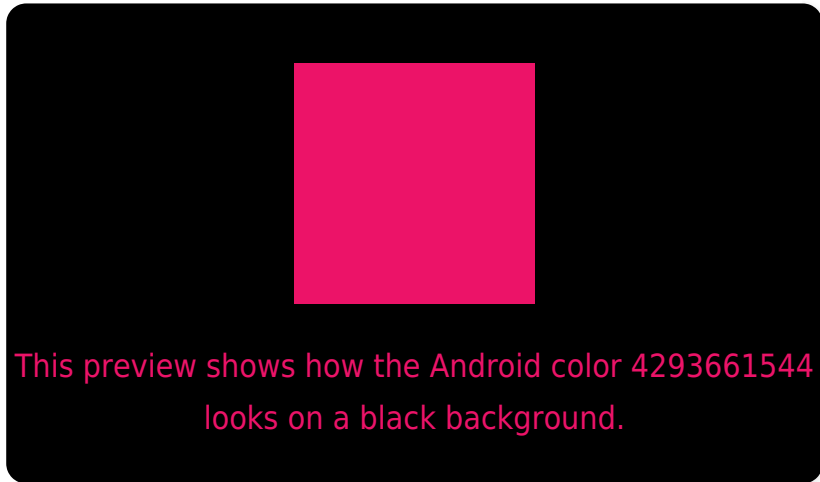
Large Text (above 18pt) WCAG AA ✓ Pass

Any Text WCAG AA ✗ Fail

Large Text (above 18pt) WCAG AAA ✗ Fail

Any Text WCAG AAA ✗ Fail

# Black Background



## Color Contrast Check

Large Text (above 18pt) WCAG AA ✓ Pass

Any Text WCAG AA ✓ Pass

Large Text (above 18pt) WCAG AAA ✓ Pass

Any Text WCAG AAA × Fail

If you want to check with other color combinations, try the [Color Contrast Checker](#).



# Android 4293661544 Background



This preview shows how black text looks on a background with the Android color 4293661544.



This preview shows how white text looks on a background with the Android color 4293661544.

# Color Blindness Simulation

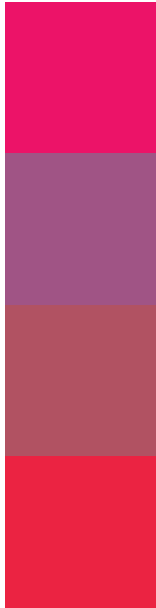
Color vision deficiency is a very complex topic, and I could not describe the different causes any better than Wikipedia does, so if you want to learn more, you should check out their [article about color blindness](#).

## Dichromacy





# Trichromacy



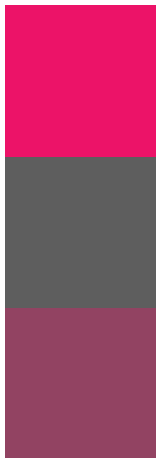
**Original Color**  
4293661544

**Protanomaly**  
4288697477

**Deuteranomaly**  
4289811042

**Tritanomaly**  
4293600066

# Monochromacy



**Original Color**  
4293661544

**Achromatopsia**  
4284374622

**Achromatomaly**  
4287775586

# CSS Examples

## Text

The CSS property to change the color of the text to Android 4293661544 is called "color". The color property can be set on classes, ids or directly on the HTML element.

This example shows how text in the color `rgb(236, 19, 104)` looks like.

```
.text, #text, p{  
    color:rgb(236, 19, 104)  
}
```

If you want to add a text shadow in that color use the text-shadow property, you can generate a text shadow directly with our [CSS Text Shadow Generator](#).

Here you see how black text with a 4 pixel rgb(236, 19, 104) colored shadow looks like.

```
.shadow{ text-shadow: 4px 4px 2px rgb(236, 19, 104) }
```

## Border

The CSS property to change the border of an element to Android 4293661544 is called "border". The border property can be set on classes, ids or directly on the HTML element.

This example shows the color as border, it can be applied via the CSS property "border" or "border-color".

```
.border, #border, table{ border:4px solid rgb(236, 19, 104) }
```

If only the border color should be changed use the property border-color.

```
.border{ border-color:rgb(236, 19, 104) }
```

If you want to add a box shadow in that color use:

Here you see how a box with a 4 pixel rgb(236, 19, 104) colored shadow looks like.

```
.boxshadow{ -moz-box-shadow:4px 4px 4px  
4px rgb(236, 19, 104); -webkit-box-  
shadow:4px 4px 4px 4px rgb(236, 19, 104);  
box-shadow:4px 4px 4px 4px rgb(236, 19,  
104) }
```

# Background

The CSS property to change the background color of an element to Android 4293661544 is called "background". The background property can be set on classes, ids or directly on the HTML element.

```
.background, #background, body{  
background: rgb(236, 19, 104) }
```

If only the background color should be changed can be used:

```
.background{ background-color: rgb(236, 19,  
104) }
```

This example shows the color as background, it is applied via the CSS property "background".

To optimize and compress your CSS code, you can use our [online CSS compressor and optimizer](#) based on csstidy. If you want to create a linear or radial gradient as background or border, check our [CSS Gradient Generator](#).



Hey! You found this booklet interesting? Support Converting Colors with the new Membership Option!

The pro membership hides all ads, plus gives you double the colors in the color bucket, and more awesome pro features!

**[Learn more, Memberships starting at \\$2.50/m!](#)**

**Follow me  
on Twitter!**

@ConvertingColor