

Converting Colors

Android(4293669242)

Have a look what the booklet for
Android(4293669242) contains.

Android(4293669242)	3
<i>Conversions</i>	4
<i>Details</i>	6
<i>Harmonies</i>	11
<i>Previews</i>	23
<i>Color Blindness Simulation</i>	26
<i>CSS Examples</i>	29

Color

Android(4293669242)

Conversions

Conversions Part 1

Format	Color
Hex	EC317A
RGB	236, 49, 122
RGB Percent	93%, 19%, 48%
CMY	0.0745, 0.8078, 0.5216
CMYK	0.00, 0.79, 0.48, 0.07
HSL	337°, 83%, 56%
HSV	337°, 79%, 93%
XYZ	39.2032, 21.4346, 20.4834
YIQ	113.2350, 88.0190, 62.3470

Conversions

Conversions Part 2

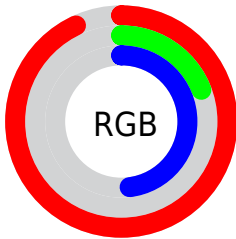
Format	Color
R_{YB}	236, 49, 122
Decimal	15479162
CIE _{Lab}	53.42, 72.96, 5.09
CIE _{LCh}	53, 73.135, 3.995
Yxy	21.4346, 0.4833, 0.2642
Android (android.graphics.Color)	4293669242 (0xFFEC317A)
YUV	113.2350, 4.3211, 107.6649
Hunter-Lab	46.2976, 70.1272, 6.1766

Details

The Android color **4293669242** is a dark color, and the websafe version is hex **CC0066**. The color can be described as middle washed rose. A complement of this color would be **4281461923**, and the grayscale version is **4285624689**.

A 20% lighter version of the original color is **4294931118**, and **4289593418** is the 20% darker color. If you saturate the color by 10%, you get **4293663084**, and if you desaturate by 10%, it is **4293675400**.

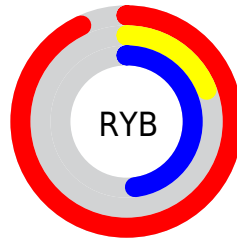
Distribution



Red (93%)

Green (19%)

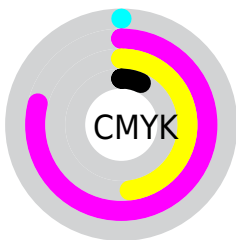
Blue (48%)



Red (93%)

Yellow (19%)

Blue (48%)

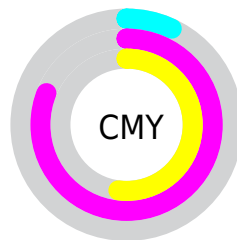


Cyan (0%)

Magenta (79%)

Yellow (48%)

Black (7%)



Cyan (7%)

Magenta (81%)

Yellow (52%)

Brightness & Saturation Gradients


These gradients show how the Android color 4293669242 changes by changing the brightness by 10 percent. The first figure shows a shift by +10% for each color and the second figure -10%.

Similar to the brightness gradients but the following saturation gradients show a change of the Android color 4293669242 by changing the saturation by 10% instead.

 4293669242

 4293669242

4294967295

 4291625057

 4294931118

 4289593418

 4294938825

 4287561780

 4294946277

 4285595679

 4294953983

 4283695109

 4294961663

 4281663490

 4278452224

 4278190080

 4293669242

 4293669242

 4293663084

 4293675400

 4293657181

 4293681303

 4293656668

 4293687461

 4293693364

 4293699522

 4293705680

 4293711583

 4293717741

 4293722107

Harmonies

Analogous

The Analogous color harmony consists of three colors that are next to each other on the color wheel.



4291839928



4293669242



4293215805

Triad

The Triadic color harmony groups three colors that are evenly spaced from another and form a triangle on the color wheel.



4293669242



4283535104



4278228209

Complementary

The Complementary color scheme is a pair of colors which are on the opposite of each other on the color wheel.



4293669242



4281461923

Split Complementary

Split-complementary colors differ from the complementary color scheme. The scheme consists of three colors, the original color and two neighbors of the complement color.



4278229701



4293669242



4278229060

Square

The Square scheme is like the rectangle color scheme, but the four colors are evenly spaced on the color wheel.



4293669242



4287856640



4278229895



4278224383

Rectangle

The Rectangle color scheme consists of four colors that form a rectangle on the color wheel.



4293669242



4291976208



4278229895



4278228965

Sweetspot

The Sweet Spot groups the original color and five complimentary colors.



4293669242



4294951642



4288754156



4286602089



4278190080



4286611584

Same Dimension

The Same Dimension uses a secret algorithm to generate beautiful new colors.



4293669242



4294905195



4293674033



4285885038



4290052167



4281729045

Inverse Universe

The Inverse Universe completely reimagines the original color for something new.



4293669242



4294905195



4281457132



4285885038



4290052167



4281729045

Previews

White Background



This preview shows how the Android color 4293669242 looks on a white background.

Color Contrast Check

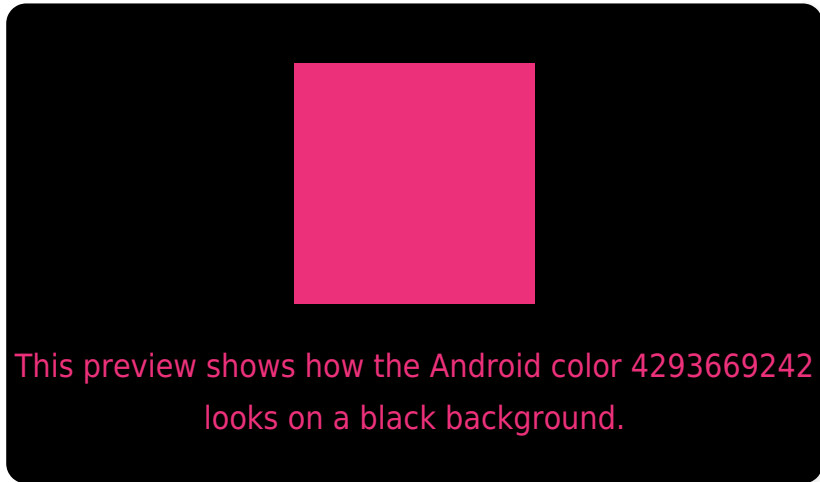
Large Text (above 18pt) WCAG AA ✓ Pass

Any Text WCAG AA ✗ Fail

Large Text (above 18pt) WCAG AAA ✗ Fail

Any Text WCAG AAA ✗ Fail

Black Background



Color Contrast Check

Large Text (above 18pt) WCAG AA ✓ Pass

Any Text WCAG AA ✓ Pass

Large Text (above 18pt) WCAG AAA ✓ Pass

Any Text WCAG AAA × Fail

If you want to check with other color combinations, try the [Color Contrast Checker](#).

Android 4293669242 Background



This preview shows how black text looks on a background with the Android color 4293669242.



This preview shows how white text looks on a background with the Android color 4293669242.

Color Blindness Simulation

Color vision deficiency is a very complex topic, and I could not describe the different causes any better than Wikipedia does, so if you want to learn more, you should check out their [article about color blindness](#).

Dichromacy

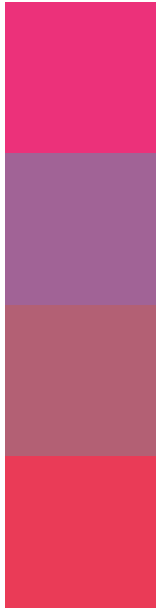


Original Color
4293669242

Protanopia
4285956006

Deuteranopia
4287789937

Trichromacy



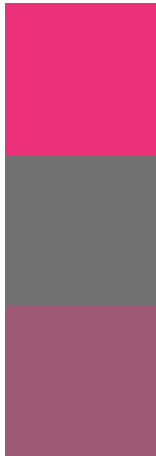
Original Color
4293669242

Protanomaly
4288766870

Deuteranomaly
4289945716

Tritanomaly
4293540695

Monochromacy



Original Color
4293669242

Achromatopsia
4285624689

Achromatomaly
4288567924

CSS Examples

Text

The CSS property to change the color of the text to Android 4293669242 is called "color". The color property can be set on classes, ids or directly on the HTML element.

This example shows how text in the color `rgb(236, 49, 122)` looks like.

```
.text, #text, p{  
    color:rgb(236, 49, 122)  
}
```

If you want to add a text shadow in that color use the text-shadow property, you can generate a text shadow directly with our [CSS Text Shadow Generator](#).

Here you see how black text with a 4 pixel rgb(236, 49, 122) colored shadow looks like.

```
.shadow{ text-shadow: 4px 4px 2px rgb(236, 49, 122) }
```

Border

The CSS property to change the border of an element to Android 4293669242 is called "border". The border property can be set on classes, ids or directly on the HTML element.

This example shows the color as border, it can be applied via the CSS property "border" or "border-color".

```
.border, #border, table{ border:4px solid rgb(236, 49, 122) }
```

If only the border color should be changed use the property `border-color`.

```
.border{ border-color:rgb(236, 49, 122) }
```

If you want to add a box shadow in that color use:

Here you see how a box with a 4 pixel `rgb(236, 49, 122)` colored shadow looks like.

```
.boxshadow{ -moz-box-shadow:4px 4px 4px  
4px rgb(236, 49, 122); -webkit-box-  
shadow:4px 4px 4px 4px rgb(236, 49, 122);  
box-shadow:4px 4px 4px 4px rgb(236, 49,  
122) }
```

Background

The CSS property to change the background color of an element to Android 4293669242 is called "background". The background property can be set on classes, ids or directly on the HTML element.

```
.background, #background, body{  
background: rgb(236, 49, 122) }
```

If only the background color should be changed can be used:

```
.background{ background-color: rgb(236, 49,  
122) }
```

This example shows the color as background, it is applied via the CSS property "background".

To optimize and compress your CSS code, you can use our [online CSS compressor and optimizer](#) based on csstidy. If you want to create a linear or radial gradient as background or border, check our [CSS Gradient Generator](#).

Hey! You found this booklet interesting? Support Converting Colors with the new Membership Option!

The pro membership hides all ads, plus gives you double the colors in the color bucket, and more awesome pro features!

[Learn more, Memberships starting at \\$2.50/m!](#)

**Follow me
on Twitter!**

@ConvertingColor