

# Converting Colors

Android(4293672046)

Have a look what the booklet for  
Android(4293672046) contains.

<b>Android(4293672046)</b> .....	3
<b><i>Conversions</i></b> .....	4
<b><i>Details</i></b> .....	6
<b><i>Harmonies</i></b> .....	11
<b><i>Previews</i></b> .....	23
<b><i>Color Blindness Simulation</i></b> .....	26
<b><i>CSS Examples</i></b> .....	29

# Color

**Android(4293672046)**

# Conversions

## Conversions Part 1

<b>Format</b>	<b>Color</b>
Hex	EC3C6E
RGB	236, 60, 110
RGB Percent	93%, 24%, 43%
CMY	0.0745, 0.7647, 0.5686
CMYK	0.00, 0.75, 0.53, 0.07
HSL	343°, 82%, 58%
HSV	343°, 75%, 93%
XYZ	39.0224, 22.1904, 16.9783
YIQ	118.3240, 88.8460, 52.8620

# Conversions

## Conversions Part 2

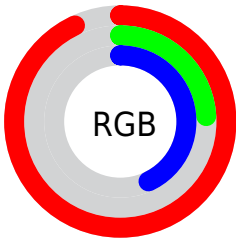
<b>Format</b>	<b>Color</b>
<b>R<sub>YB</sub></b>	236, 60, 110
Decimal	15481966
CIE <sub>Lab</sub>	54.23, 68.91, 13.43
CIE <sub>LCh</sub>	54, 70.205, 11.033
Yxy	22.1904, 0.4991, 0.2838
Android (android.graphics.Color)	4293672046 (0xFFEC3C6E)
YUV	118.3240, -4.1037, 103.2019
Hunter-Lab	47.1067, 65.4299, 11.6052

# Details

The Android color **4293672046** is a dark color, and the websafe version is hex **CC3366**. The color can be described as dark washed rose. A complement of this color would be **4282182842**, and the grayscale version is **4285953654**.

A 20% lighter version of the original color is **4294932897**, and **4289593407** is the 20% darker color. If you saturate the color by 10%, you get **4293665885**, and if you desaturate by 10%, it is **4293678207**.

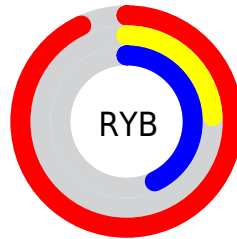
# Distribution



Red (93%)

Green (24%)

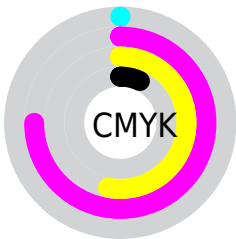
Blue (43%)



Red (93%)

Yellow (24%)

Blue (43%)

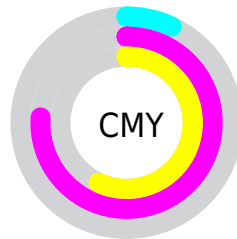


Cyan (0%)

Magenta (75%)

Yellow (53%)

Black (7%)



Cyan (7%)

Magenta (76%)

Yellow (57%)

# Brightness & Saturation Gradients

These gradients show how the Android color 4293672046 changes by changing the brightness by 10 percent. The first figure shows a shift by +10% for each color and the second figure -10%.


Similar to the brightness gradients but the following saturation gradients show a change of the Android color 4293672046 by changing the saturation by 10% instead.



 4293672046

 4293672046

4294967295

 4291629398

 4294932897

 4289593407

 4294940348

 4287561770

 4294948056

 4285595670

 4294955508

 4283629570

 4294963199

 4281663490

 4278321152

 4278190080

 4293672046

 4293672046

 4293665885

 4293678207

 4293659980

 4293684112

 4293656643

 4293690273

 4293696178

 4293702338

 4293708499

 4293714404

 4293720565

 4293722111

# Harmonies

## Analogous

The Analogous color harmony consists of three colors that are next to each other on the color wheel.



4292429739



4293672046



4292825908

# Triad

The Triadic color harmony groups three colors that are evenly spaced from another and form a triangle on the color wheel.



4293672046



4282553109



4278227957

# Complementary

The Complementary color scheme is a pair of colors which are on the opposite of each other on the color wheel.



4293672046



4282182842

# Split Complementary

Split-complementary colors differ from the complementary color scheme. The scheme consists of three colors, the original color and two neighbors of the complement color.



4278229968



4293672046



4278229592

# Square

The Square scheme is like the rectangle color scheme, but the four colors are evenly spaced on the color wheel.



4293672046



4287137280



4278230423



4278223610

# Rectangle

The Rectangle color scheme consists of four colors that form a rectangle on the color wheel.



4293672046



4291389189



4278230423



4278228972



# Sweetspot

The Sweet Spot groups the original color and five complimentary colors.



4293672046



4294952919



4290198764



4286602856



4278190080



4286611584



# Same Dimension

The Same Dimension uses a secret algorithm to generate beautiful new colors.



4293672046



4294909021



4293680956



4285885037



4290052147



4281729039



# Inverse Universe

The Inverse Universe completely reimagines the original color for something new.



4293672046



4294909021



4282173932



4285885037



4290052147



4281729039



# Previews

## White Background



This preview shows how the Android color 4293672046 looks on a white background.

## Color Contrast Check

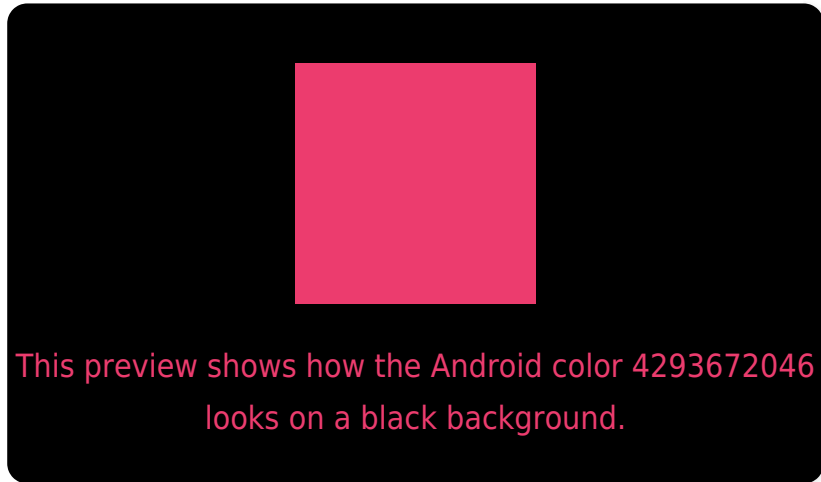
Large Text (above 18pt) WCAG AA ✓ Pass

Any Text WCAG AA ✗ Fail

Large Text (above 18pt) WCAG AAA ✗ Fail

Any Text WCAG AAA ✗ Fail

# Black Background



## Color Contrast Check

Large Text (above 18pt) WCAG AA ✓ Pass

Any Text WCAG AA ✓ Pass

Large Text (above 18pt) WCAG AAA ✓ Pass

Any Text WCAG AAA × Fail

If you want to check with other color combinations, try the [Color Contrast Checker](#).



# Android 4293672046 Background



This preview shows how black text looks on a background with the Android color 4293672046.

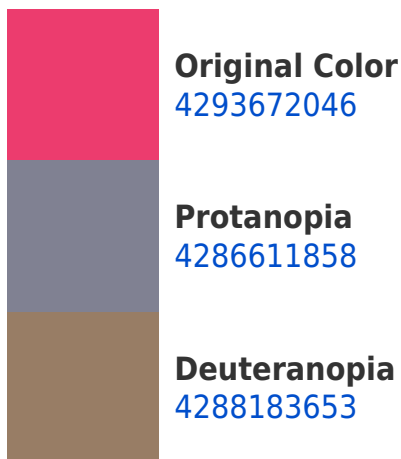


This preview shows how white text looks on a background with the Android color 4293672046.

# Color Blindness Simulation

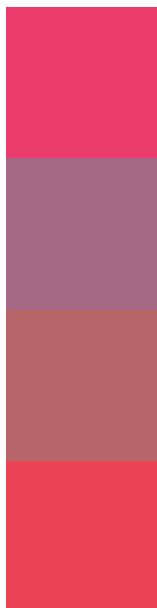
Color vision deficiency is a very complex topic, and I could not describe the different causes any better than Wikipedia does, so if you want to learn more, you should check out their [article about color blindness](#).

## Dichromacy





# Trichromacy



**Original Color**

4293672046

**Protanomaly**

4289161349

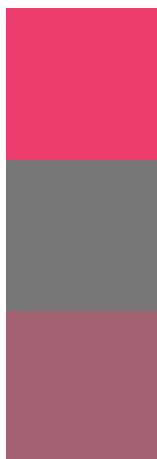
**Deuteranomaly**

4290209128

**Tritanomaly**

4293608022

# Monochromacy



**Original Color**

4293672046

**Achromatopsia**

4285953654

**Achromatomaly**

4288766323

# CSS Examples

## Text

The CSS property to change the color of the text to Android 4293672046 is called "color". The color property can be set on classes, ids or directly on the HTML element.

This example shows how text in the color `rgb(236, 60, 110)` looks like.

```
.text, #text, p{  
    color:rgb(236, 60, 110)  
}
```

If you want to add a text shadow in that color use the text-shadow property, you can generate a text shadow directly with our [CSS Text Shadow Generator](#).

Here you see how black text with a 4 pixel rgb(236, 60, 110) colored shadow looks like.

```
.shadow{ text-shadow: 4px 4px 2px rgb(236, 60, 110) }
```

## Border

The CSS property to change the border of an element to Android 4293672046 is called "border". The border property can be set on classes, ids or directly on the HTML element.

This example shows the color as border, it can be applied via the CSS property "border" or "border-color".

```
.border, #border, table{ border:4px solid rgb(236, 60, 110) }
```

If only the border color should be changed use the property `border-color`.

```
.border{ border-color:rgb(236, 60, 110) }
```

If you want to add a box shadow in that color use:

Here you see how a box with a 4 pixel `rgb(236, 60, 110)` colored shadow looks like.

```
.boxshadow{ -moz-box-shadow:4px 4px 4px  
4px rgb(236, 60, 110); -webkit-box-  
shadow:4px 4px 4px 4px rgb(236, 60, 110);  
box-shadow:4px 4px 4px 4px rgb(236, 60,  
110) }
```

# Background

The CSS property to change the background color of an element to Android 4293672046 is called "background". The background property can be set on classes, ids or directly on the HTML element.

```
.background, #background, body{  
background: rgb(236, 60, 110) }
```

If only the background color should be changed can be used:

```
.background{ background-color: rgb(236, 60,  
110) }
```

This example shows the color as background, it is applied via the CSS property "background".

To optimize and compress your CSS code, you can use our [online CSS compressor and optimizer](#) based on csstidy. If you want to create a linear or radial gradient as background or border, check our [CSS Gradient Generator](#).



Hey! You found this booklet interesting? Support Converting Colors with the new Membership Option!

The pro membership hides all ads, plus gives you double the colors in the color bucket, and more awesome pro features!

**[Learn more, Memberships starting at \\$2.50/m!](#)**

**Follow me  
on Twitter!**

@ConvertingColor