

# Converting Colors

Android(4293674634)

Have a look what the booklet for  
Android(4293674634) contains.

<b>Android(4293674634)</b> .....	3
<b><i>Conversions</i></b> .....	4
<b><i>Details</i></b> .....	6
<b><i>Harmonies</i></b> .....	11
<b><i>Previews</i></b> .....	23
<b><i>Color Blindness Simulation</i></b> .....	26
<b><i>CSS Examples</i></b> .....	29

**Color**

**Android(4293674634)**

# Conversions

## Conversions Part 1

<b>Format</b>	<b>Color</b>
Hex	EC468A
RGB	236, 70, 138
RGB Percent	93%, 27%, 54%
CMY	0.0745, 0.7255, 0.4588
CMYK	0.00, 0.70, 0.42, 0.07
HSL	335°, 81%, 60%
HSV	335°, 70%, 93%
XYZ	41.3697, 24.0482, 26.5061
YIQ	127.3860, 77.1080, 56.3400

# Conversions

## Conversions Part 2

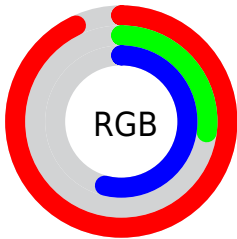
<b>Format</b>	<b>Color</b>
R <sub>Y</sub> B	236, 70, 138
Decimal	15484554
CIE Lab	56.14, 67.99, -0.51
CIE LCh	56, 67.994, 359.572
Yxy	24.0482, 0.4500, 0.2616
Android (android.graphics.Color)	4293674634 (0xFFEC468A)
YUV	127.3860, 5.2327, 95.2545
Hunter-Lab	49.0389, 64.7661, 2.2803

# Details

The Android color **4293674634** is a dark color, and the websafe version is hex **FF6699**. The color can be described as middle muted rose. A complement of this color would be **4282838184**, and the grayscale version is **4286545791**.

A 20% lighter version of the original color is **4294935231**, and **4289658968** is the 20% darker color. If you saturate the color by 10%, you get **4293668476**, and if you desaturate by 10%, it is **4293680792**.

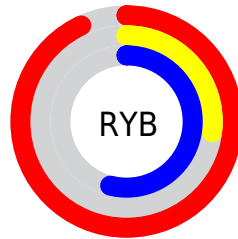
# Distribution



Red (93%)

Green (27%)

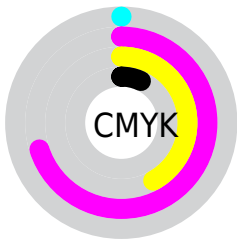
Blue (54%)



Red (93%)

Yellow (27%)

Blue (54%)

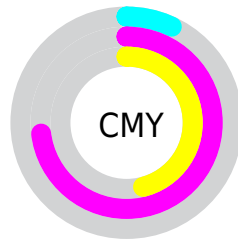


Cyan (0%)

Magenta (70%)

Yellow (42%)

Black (7%)



Cyan (7%)

Magenta (73%)

Yellow (46%)

# Brightness & Saturation Gradients

These gradients show how the Android color 4293674634 changes by changing the brightness by 10 percent. The first figure shows a shift by +10% for each color and the second figure -10%.


Similar to the brightness gradients but the following saturation gradients show a change of the Android color 4293674634 by changing the saturation by 10% instead.



 4293674634

 4293674634

4294967295

 4291633777

 4294935231

 4289658968

 4294942683

 4287692865

 4294950136

 4285726763

 4294957567

 4283826199

 4294965247

 4281991170

 4279435264

 4278190080

 4293674634

 4293674634

 4293668476

 4293680792

 4293662574

 4293686694

 4293656673

 4293692852

 4293698754

 4293704912

 4293711070

 4293716972

 4293722105

 4293722111

# Harmonies

## Analogous

The Analogous color harmony consists of three colors that are next to each other on the color wheel.



4291582659



4293674634



4293611856

# Triad

The Triadic color harmony groups three colors that are evenly spaced from another and form a triangle on the color wheel.



4293674634



4285043712



4278229996

# Complementary

The Complementary color scheme is a pair of colors which are on the opposite of each other on the color wheel.



4293674634



4282838184

# Split Complementary

Split-complementary colors differ from the complementary color scheme. The scheme consists of three colors, the original color and two neighbors of the complement color.



4278231488



4293674634



4278230343

# Square

The Square scheme is like the rectangle color scheme, but the four colors are evenly spaced on the color wheel.



4293674634



4288840704



4278231428



4278226686

# Rectangle

The Rectangle color scheme consists of four colors that form a rectangle on the color wheel.



4293674634



4292567852



4278231428



4278230752



# Sweetspot

The Sweet Spot groups the original color and five complimentary colors.



4293674634



4294953439



4289152748



4286603373



4278190080



4286611584



# Same Dimension

The Same Dimension uses a secret algorithm to generate beautiful new colors.



4293674634



4294912385



4293678150



4285885038



4290052170



4281729046



# Inverse Universe

The Inverse Universe completely reimagines the original color for something new.



4293674634



4294912385



4282834668



4285885038



4290052170



4281729046



# Previews

## White Background



This preview shows how the Android color 4293674634 looks on a white background.

## Color Contrast Check

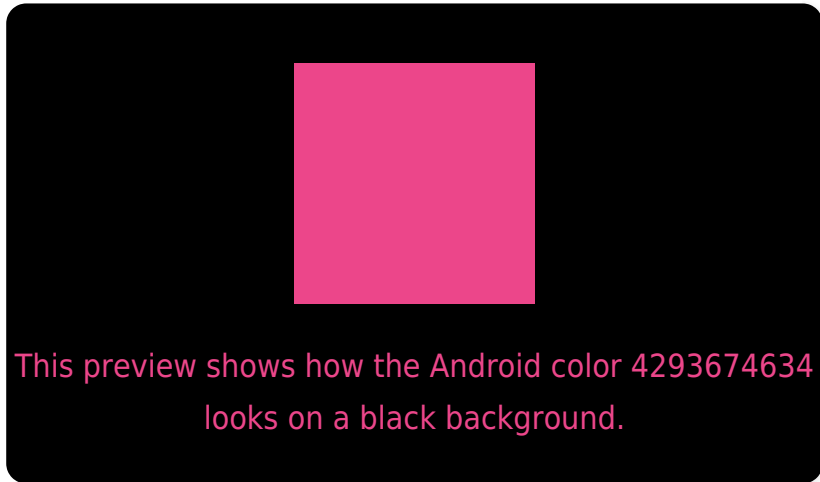
Large Text (above 18pt) WCAG AA ✓ Pass

Any Text WCAG AA ✗ Fail

Large Text (above 18pt) WCAG AAA ✗ Fail

Any Text WCAG AAA ✗ Fail

# Black Background



## Color Contrast Check

Large Text (above 18pt) WCAG AA ✓ Pass

Any Text WCAG AA ✓ Pass

Large Text (above 18pt) WCAG AAA ✓ Pass

Any Text WCAG AAA × Fail

If you want to check with other color combinations, try the [Color Contrast Checker](#).



# Android 4293674634 Background



This preview shows how black text looks on a background with the Android color 4293674634.



This preview shows how white text looks on a background with the Android color 4293674634.

# Color Blindness Simulation

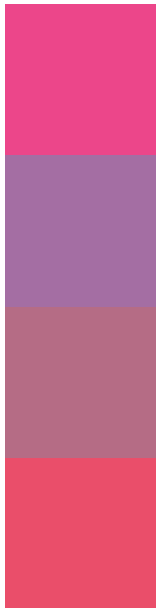
Color vision deficiency is a very complex topic, and I could not describe the different causes any better than Wikipedia does, so if you want to learn more, you should check out their [article about color blindness](#).

## Dichromacy





# Trichromacy



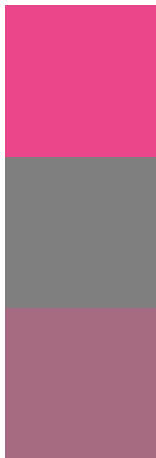
**Original Color**  
4293674634

**Protanomaly**  
4288966307

**Deuteranomaly**  
4290079877

**Tritanomaly**  
4293545578

# Monochromacy



**Original Color**  
4293674634

**Achromatopsia**  
4286545791

**Achromatomaly**  
4289161859

# CSS Examples

## Text

The CSS property to change the color of the text to Android 4293674634 is called "color". The color property can be set on classes, ids or directly on the HTML element.

This example shows how text in the color `rgb(236, 70, 138)` looks like.

```
.text, #text, p{  
    color:rgb(236, 70, 138)  
}
```

If you want to add a text shadow in that color use the text-shadow property, you can generate a text shadow directly with our [CSS Text Shadow Generator](#).

Here you see how black text with a 4 pixel rgb(236, 70, 138) colored shadow looks like.

```
.shadow{ text-shadow: 4px 4px 2px rgb(236, 70, 138) }
```

## Border

The CSS property to change the border of an element to Android 4293674634 is called "border". The border property can be set on classes, ids or directly on the HTML element.

This example shows the color as border, it can be applied via the CSS property "border" or "border-color".

```
.border, #border, table{ border:4px solid rgb(236, 70, 138) }
```

If only the border color should be changed use the property `border-color`.

```
.border{ border-color:rgb(236, 70, 138) }
```

If you want to add a box shadow in that color use:

Here you see how a box with a 4 pixel `rgb(236, 70, 138)` colored shadow looks like.

```
.boxshadow{ -moz-box-shadow:4px 4px 4px  
4px rgb(236, 70, 138); -webkit-box-  
shadow:4px 4px 4px 4px rgb(236, 70, 138);  
box-shadow:4px 4px 4px 4px rgb(236, 70,  
138) }
```

# Background

The CSS property to change the background color of an element to Android 4293674634 is called "background". The background property can be set on classes, ids or directly on the HTML element.

```
.background, #background, body{  
background: rgb(236, 70, 138) }
```

If only the background color should be changed can be used:

```
.background{ background-color: rgb(236, 70,  
138) }
```

This example shows the color as background, it is applied via the CSS property "background".

To optimize and compress your CSS code, you can use our [online CSS compressor and optimizer](#) based on csstidy. If you want to create a linear or radial gradient as background or border, check our [CSS Gradient Generator](#).



Hey! You found this booklet interesting? Support Converting Colors with the new Membership Option!

The pro membership hides all ads, plus gives you double the colors in the color bucket, and more awesome pro features!

**[Learn more, Memberships starting at \\$2.50/m!](#)**

**Follow me  
on Twitter!**

@ConvertingColor