

Converting Colors

Android(4293683074)

Have a look what the booklet for
Android(4293683074) contains.

Android(4293683074)	3
<i>Conversions</i>	4
<i>Details</i>	6
<i>Harmonies</i>	11
<i>Previews</i>	23
<i>Color Blindness Simulation</i>	26
<i>CSS Examples</i>	29

Color

Android(4293683074)

Conversions

Conversions Part 1

Format	Color
Hex	EC6782
RGB	236, 103, 130
RGB Percent	93%, 40%, 51%
CMY	0.0745, 0.5961, 0.4902
CMYK	0.00, 0.56, 0.45, 0.07
HSL	348°, 78%, 66%
HSV	348°, 56%, 93%
XYZ	43.4716, 29.1451, 24.4534
YIQ	145.8450, 70.6010, 36.5930

Conversions

Conversions Part 2

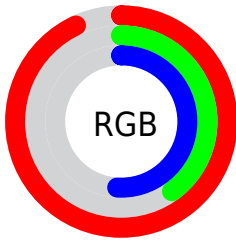
Format	Color
R _Y B	236, 103, 130
Decimal	15492994
CIE Lab	60.91, 53.73, 11.03
CIE LCh	61, 54.850, 11.605
Yxy	29.1451, 0.4478, 0.3002
Android (android.graphics.Color)	4293683074 (0xFFEC6782)
YUV	145.8450, -7.8116, 79.0659
Hunter-Lab	53.9862, 49.2587, 10.9345

Details

The Android color **4293683074** is a light color, and the websafe version is hex **FF6699**. A complement of this color would be **4285000913**, and the grayscale version is **4287795858**.

A 20% lighter version of the original color is **4294942391**, and **4289736529** is the 20% darker color. If you saturate the color by 10%, you get **4293676911**, and if you desaturate by 10%, it is **4293689237**.

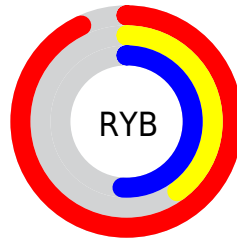
Distribution



Red (93%)

Green (40%)

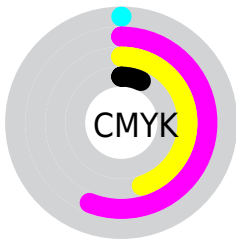
Blue (51%)



Red (93%)

Yellow (40%)

Blue (51%)

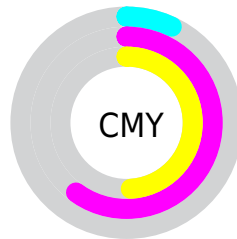


Cyan (0%)

Magenta (56%)

Yellow (45%)

Black (7%)



Cyan (7%)

Magenta (60%)

Yellow (49%)

Brightness & Saturation Gradients

These gradients show how the Android color 4293683074 changes by changing the brightness by 10 percent. The first figure shows a shift by +10% for each color and the second figure -10%.

Similar to the brightness gradients but the following saturation gradients show a change of the Android color 4293683074 by changing the saturation by 10% instead.



4293683074



4293683074

4294967295



4291710057



4294942391



4289736529



4294949842



4287760442



4294957039



4285857829



4294964735



4283957264



4282253314



4280025089



4278190080



4293683074



4293683074

 4293676911

 4293689237

 4293671004

 4293695144

 4293664842

 4293701306

 4293658935

 4293707213

 4293656624

 4293713376

 4293719539

 4293722111

Harmonies

Analogous

The Analogous color harmony consists of three colors that are next to each other on the color wheel.



4292635827



4293683074



4293096277

Triad

The Triadic color harmony groups three colors that are evenly spaced from another and form a triangle on the color wheel.



4293683074



4284916294



4278231279

Complementary

The Complementary color scheme is a pair of colors which are on the opposite of each other on the color wheel.



4293683074



4285000913

Split Complementary

Split-complementary colors differ from the complementary color scheme. The scheme consists of three colors, the original color and two neighbors of the complement color.



4278233298



4293683074



4278233459

Square

The Square scheme is like the rectangle color scheme, but the four colors are evenly spaced on the color wheel.



4293683074



4288386604



4278234021



4284125938

Rectangle

The Rectangle color scheme consists of four colors that form a rectangle on the color wheel.



4293683074



4291919677



4278234021



4278232296

Sweetspot

The Sweet Spot groups the original color and five complimentary colors.



4293683074



4294956252



4291782636



4286604907



4278190080



4286611584

Same Dimension

The Same Dimension uses a secret algorithm to generate beautiful new colors.



4293683074



4294922869



4293692775



4285885036



4290052133



4281729035

Inverse Universe

The Inverse Universe completely reimagines the original color for something new.



4293683074



4294922869



4284991212



4285885036



4290052133



4281729035

Previews

White Background



This preview shows how the Android color 4293683074 looks on a white background.

Color Contrast Check

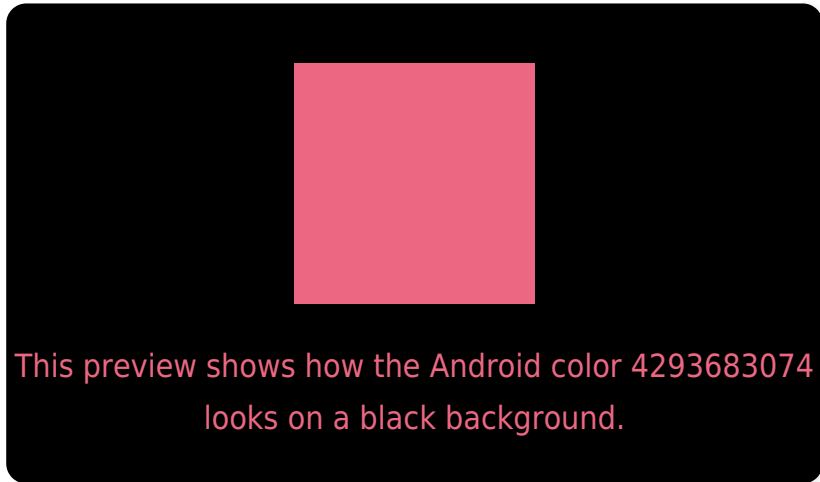
Large Text (above 18pt) WCAG AA ✓ Pass

Any Text WCAG AA ✗ Fail

Large Text (above 18pt) WCAG AAA ✗ Fail

Any Text WCAG AAA ✗ Fail

Black Background



Color Contrast Check

Large Text (above 18pt) WCAG AA ✓ Pass

Any Text WCAG AA ✓ Pass

Large Text (above 18pt) WCAG AAA ✓ Pass

Any Text WCAG AAA × Fail

If you want to check with other color combinations, try the [Color Contrast Checker](#).

Android 4293683074 Background



This preview shows how black text looks on a background with the Android color 4293683074.



This preview shows how white text looks on a background with the Android color 4293683074.

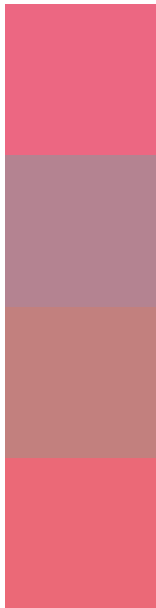
Color Blindness Simulation

Color vision deficiency is a very complex topic, and I could not describe the different causes any better than Wikipedia does, so if you want to learn more, you should check out their [article about color blindness](#).

Dichromacy



Trichromacy



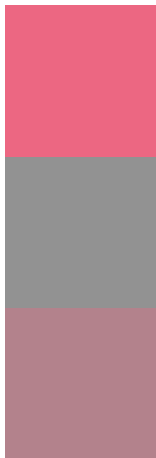
Original Color
4293683074

Protanomaly
4290020241

Deuteranomaly
4290936958

Tritanomaly
4293618039

Monochromacy



Original Color
4293683074

Achromatopsia
4287795858

Achromatomaly
4289954444

CSS Examples

Text

The CSS property to change the color of the text to Android 4293683074 is called "color". The color property can be set on classes, ids or directly on the HTML element.

This example shows how text in the color `rgb(236, 103, 130)` looks like.

```
.text, #text, p{  
    color:rgb(236, 103, 130)  
}
```

If you want to add a text shadow in that color use the text-shadow property, you can generate a text shadow directly with our [CSS Text Shadow Generator](#).

Here you see how black text with a 4 pixel rgb(236, 103, 130) colored shadow looks like.

```
.shadow{ text-shadow: 4px 4px 2px rgb(236, 103, 130) }
```

Border

The CSS property to change the border of an element to Android 4293683074 is called "border". The border property can be set on classes, ids or directly on the HTML element.

This example shows the color as border, it can be applied via the CSS property "border" or "border-color".

```
.border, #border, table{ border:4px solid rgb(236, 103, 130) }
```

If only the border color should be changed use the property `border-color`.

```
.border{ border-color:rgb(236, 103, 130) }
```

If you want to add a box shadow in that color use:

Here you see how a box with a 4 pixel `rgb(236, 103, 130)` colored shadow looks like.

```
.boxshadow{ -moz-box-shadow:4px 4px 4px  
4px rgb(236, 103, 130); -webkit-box-  
shadow:4px 4px 4px 4px rgb(236, 103, 130);  
box-shadow:4px 4px 4px 4px rgb(236, 103,  
130) }
```

Background

The CSS property to change the background color of an element to Android 4293683074 is called "background". The background property can be set on classes, ids or directly on the HTML element.

```
.background, #background, body{  
background: rgb(236, 103, 130) }
```

If only the background color should be changed can be used:

```
.background{ background-color: rgb(236,  
103, 130) }
```

This example shows the color as background, it is applied via the CSS property "background".

To optimize and compress your CSS code, you can use our [online CSS compressor and optimizer](#) based on csstidy. If you want to create a linear or radial gradient as background or border, check our [CSS Gradient Generator](#).

Hey! You found this booklet interesting? Support Converting Colors with the new Membership Option!

The pro membership hides all ads, plus gives you double the colors in the color bucket, and more awesome pro features!

[Learn more, Memberships starting at \\$2.50/m!](#)

**Follow me
on Twitter!**

@ConvertingColor