

Converting Colors

Android(4293685119)

Have a look what the booklet for
Android(4293685119) contains.

Android(4293685119)	3
<i>Conversions</i>	4
<i>Details</i>	6
<i>Harmonies</i>	11
<i>Previews</i>	23
<i>Color Blindness Simulation</i>	26
<i>CSS Examples</i>	29

Color

Android(4293685119)

Conversions

Conversions Part 1

Format	Color
Hex	EC6F7F
RGB	236, 111, 127
RGB Percent	93%, 44%, 50%
CMY	0.0745, 0.5647, 0.5020
CMYK	0.00, 0.53, 0.46, 0.07
HSL	352°, 77%, 68%
HSV	352°, 53%, 93%
XYZ	44.1073, 30.7341, 23.6862
YIQ	150.1990, 69.3640, 31.4760

Conversions

Conversions Part 2

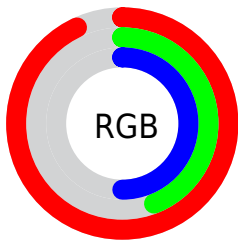
Format	Color
R_{YB}	236, 111, 127
Decimal	15495039
CIE _{Lab}	62.28, 49.68, 14.69
CIE _{LCh}	62, 51.804, 16.468
Yxy	30.7341, 0.4477, 0.3119
Android (android.graphics.Color)	4293685119 (0xFFEC6F7F)
YUV	150.1990, -11.4371, 75.2475
Hunter-Lab	55.4383, 44.9994, 13.4749

Details

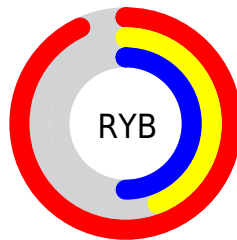
The Android color **4293685119** is a light color, and the websafe version is hex **CC6666**. A complement of this color would be **4285525212**, and the grayscale version is **4288059030**.

A 20% lighter version of the original color is **4294944436**, and **4289739086** is the 20% darker color. If you saturate the color by 10%, you get **4293678954**, and if you desaturate by 10%, it is **4293691284**.

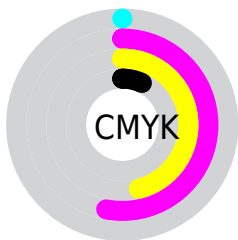
Distribution



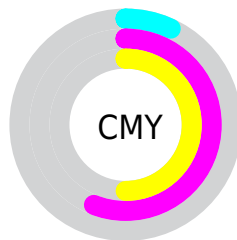
- Red (93%)
- Green (44%)
- Blue (50%)



- Red (93%)
- Yellow (44%)
- Blue (50%)



- Cyan (0%)
- Magenta (53%)
- Yellow (46%)
- Black (7%)



- Cyan (7%)
- Magenta (56%)
- Yellow (50%)

Brightness & Saturation Gradients


These gradients show how the Android color 4293685119 changes by changing the brightness by 10 percent. The first figure shows a shift by +10% for each color and the second figure -10%.

Similar to the brightness gradients but the following saturation gradients show a change of the Android color 4293685119 by changing the saturation by 10% instead.

 4293685119

 4293685119

4294967295

 4291712102

 4294944436

 4289739086

 4294951631

 4287765304

 4294959083

 4285857826

 4294966527

 4284022797

 4282253313

 4280156161

 4278190080

 4293685119

 4293685119

 4293678954

 4293691284

 4293673046

 4293697192

 4293666881

 4293703357

 4293660973

 4293709265

 4293656606

 4293715430

 4293721594

 4293722111

Harmonies

Analogous

The Analogous color harmony consists of three colors that are next to each other on the color wheel.



4292899245



4293685119



4292901718

Triad

The Triadic color harmony groups three colors that are evenly spaced from another and form a triangle on the color wheel.



4293685119



4284720724



4278231792

Complementary

The Complementary color scheme is a pair of colors which are on the opposite of each other on the color wheel.



4293685119



4285525212

Split Complementary

Split-complementary colors differ from the complementary color scheme. The scheme consists of three colors, the original color and two neighbors of the complement color.



4278233816



4293685119



4278234239

Square

The Square scheme is like the rectangle color scheme, but the four colors are evenly spaced on the color wheel.



4293685119



4288191545



4278234543



4285830127

Rectangle

The Rectangle color scheme consists of four colors that form a rectangle on the color wheel.



4293685119



4291659585



4278234543



4278232554

Sweetspot

The Sweet Spot groups the original color and five complimentary colors.



4293685119



4294956763



4292571116



4286605162



4278190080



4286611584

Same Dimension

The Same Dimension uses a secret algorithm to generate beautiful new colors.



4293685119



4294925425



4293696879



4285885035



4290052119



4281729031

Inverse Universe

The Inverse Universe completely reimagines the original color for something new.



4293685119



4294925425



4285513452



4285885035



4290052119



4281729031

Previews

White Background



This preview shows how the Android color 4293685119 looks on a white background.

Color Contrast Check

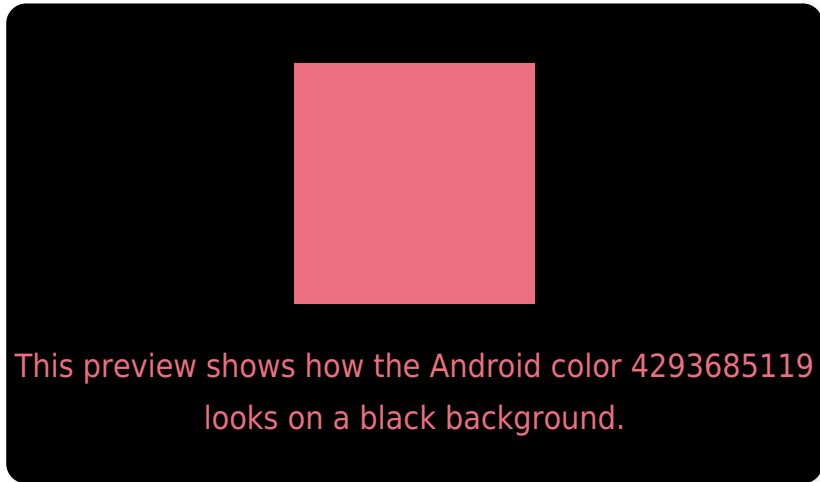
Large Text (above 18pt) WCAG AA × Fail

Any Text WCAG AA × Fail

Large Text (above 18pt) WCAG AAA × Fail

Any Text WCAG AAA × Fail

Black Background



Color Contrast Check

Large Text (above 18pt) WCAG AA ✓ Pass

Any Text WCAG AA ✓ Pass

Large Text (above 18pt) WCAG AAA ✓ Pass

Any Text WCAG AAA ✓ Pass

If you want to check with other color combinations, try the [Color Contrast Checker](#).

Android 4293685119 Background



This preview shows how black text looks on a background with the Android color 4293685119.




This preview shows how white text looks on a background with the Android color 4293685119.

Color Blindness Simulation

Color vision deficiency is a very complex topic, and I could not describe the different causes any better than Wikipedia does, so if you want to learn more, you should check out their [article about color blindness](#).

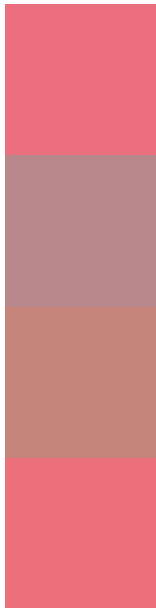
Dichromacy





Tritanopia
4293619832

Trichromacy



Original Color
4293685119

Protanomaly
4290283660

Deuteranomaly
4291200379

Tritanomaly
4293619835

Monochromacy



Original Color
4293685119

Achromatopsia
4288059030

Achromatomaly
4290087054

CSS Examples

Text

The CSS property to change the color of the text to Android 4293685119 is called "color". The color property can be set on classes, ids or directly on the HTML element.

This example shows how text in the color `rgb(236, 111, 127)` looks like.

```
.text, #text, p{  
    color:rgb(236, 111, 127)  
}
```

If you want to add a text shadow in that color use the text-shadow property, you can generate a text shadow directly with our [CSS Text Shadow Generator](#).

Here you see how black text with a 4 pixel rgb(236, 111, 127) colored shadow looks like.

```
.shadow{ text-shadow: 4px 4px 2px rgb(236, 111, 127) }
```

Border

The CSS property to change the border of an element to Android 4293685119 is called "border". The border property can be set on classes, ids or directly on the HTML element.

This example shows the color as border, it can be applied via the CSS property "border" or "border-color".

```
.border, #border, table{ border:4px solid rgb(236, 111, 127) }
```

If only the border color should be changed use the property `border-color`.

```
.border{ border-color:rgb(236, 111, 127) }
```

If you want to add a box shadow in that color use:

Here you see how a box with a 4 pixel `rgb(236, 111, 127)` colored shadow looks like.

```
.boxshadow{ -moz-box-shadow:4px 4px 4px  
4px rgb(236, 111, 127); -webkit-box-  
shadow:4px 4px 4px 4px rgb(236, 111, 127);  
box-shadow:4px 4px 4px 4px rgb(236, 111,  
127) }
```

Background

The CSS property to change the background color of an element to Android 4293685119 is called "background". The background property can be set on classes, ids or directly on the HTML element.

```
.background, #background, body{  
background: rgb(236, 111, 127) }
```

If only the background color should be changed can be used:

```
.background{ background-color: rgb(236,  
111, 127) }
```

This example shows the color as background, it is applied via the CSS property "background".

To optimize and compress your CSS code, you can use our [online CSS compressor and optimizer](#) based on csstidy. If you want to create a linear or radial gradient as background or border, check our [CSS Gradient Generator](#).

Hey! You found this booklet interesting? Support Converting Colors with the new Membership Option!

The pro membership hides all ads, plus gives you double the colors in the color bucket, and more awesome pro features!

[Learn more, Memberships starting at \\$2.50/m!](#)

**Follow me
on Twitter!**

@ConvertingColor