

# Converting Colors

Android(4293686415)

Have a look what the booklet for  
Android(4293686415) contains.

<b>Android(4293686415)</b> .....	3
<i><b>Conversions</b></i> .....	4
<i><b>Details</b></i> .....	6
<i><b>Harmonies</b></i> .....	11
<i><b>Previews</b></i> .....	23
<i><b>Color Blindness Simulation</b></i> .....	26
<i><b>CSS Examples</b></i> .....	29

# **Color**

**Android(4293686415)**

# Conversions

## Conversions Part 1

Format	Color
Hex	EC748F
RGB	236, 116, 143
RGB Percent	93%, 45%, 56%
CMY	0.0745, 0.5451, 0.4392
CMYK	0.00, 0.51, 0.39, 0.07
HSL	346°, 76%, 69%
HSV	346°, 51%, 93%
XYZ	45.7954, 32.3068, 29.8088
YIQ	154.9580, 62.8530, 33.8370

# Conversions

## Conversions Part 2

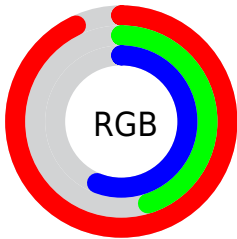
<b>Format</b>	<b>Color</b>
<a href="#">RYB</a>	<a href="#">236, 116, 143</a>
Decimal	<a href="#">15496335</a>
CIELab	<a href="#">63.60, 48.90, 7.37</a>
CIELCh	<a href="#">64, 49.448, 8.571</a>
Yxy	<a href="#">32.3068, 0.4244, 0.2994</a>
Android (android.graphics.Color)	<a href="#">4293686415</a> ( <a href="#">0xFFEC748F</a> )
YUV	<a href="#">154.9580, -5.8953, 71.0738</a>
Hunter-Lab	<a href="#">56.8391, 44.3495, 8.6932</a>

# Details

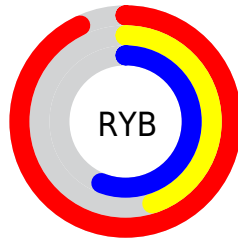
The Android color **4293686415** is a light color, and the websafe version is hex **FF6699**. A complement of this color would be **4285852881**, and the grayscale version is **4288387995**.

A 20% lighter version of the original color is **4294945733**, and **4289805917** is the 20% darker color. If you saturate the color by 10%, you get **4293680253**, and if you desaturate by 10%, it is **4293692577**.

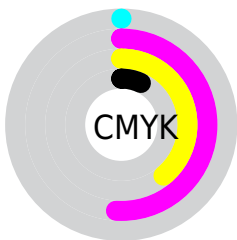
# Distribution



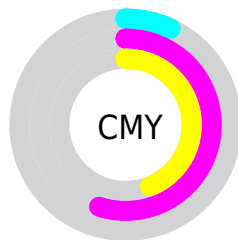
- Red (93%)
- Green (45%)
- Blue (56%)



- Red (93%)
- Yellow (45%)
- Blue (56%)



- Cyan (0%)
- Magenta (51%)
- Yellow (39%)
- Black (7%)



- Cyan (7%)
- Magenta (55%)
- Yellow (44%)

# Brightness & Saturation Gradients

These gradients show how the Android color 4293686415 changes by changing the brightness by 10 percent. The first figure shows a shift by +10% for each color and the second figure -10%.

Similar to the brightness gradients but the following saturation gradients show a change of the Android color 4293686415 by changing the saturation by 10% instead.





4293686415



4293686415

4294967295



4291713397



4294945733



4289805917



4294952929



4287898181



4294960381



4285988911



4284153883



4282449921



4280483841



4278190080



4293686415



4293686415

 4293680253

 4293692577

 4293674346

 4293698484

 4293668184

 4293704646

 4293662278

 4293710552

 4293656629

 4293716714

 4293722109

 4293722111

# Harmonies

## Analogous

The Analogous color harmony consists of three colors that are next to each other on the color wheel.



4292508347



4293686415



4293295205

# Triad

The Triadic color harmony groups three colors that are evenly spaced from another and form a triangle on the color wheel.



4293686415



4286097234



4278233067

# Complementary

The Complementary color scheme is a pair of colors which are on the opposite of each other on the color wheel.



4293686415



4285852881

# Split Complementary

Split-complementary colors differ from the complementary color scheme. The scheme consists of three colors, the original color and two neighbors of the complement color.



4278234832



4293686415



4281642616

# Square

The Square scheme is like the rectangle color scheme, but the four colors are evenly spaced on the color wheel.



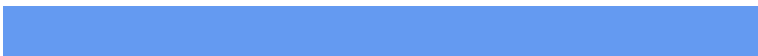
4293686415



4289174591



4278235302



4284783345

# Rectangle

The Rectangle color scheme consists of four colors that form a rectangle on the color wheel.



4293686415



4292314959



4278235302



4278233828



# Sweetspot

The Sweet Spot groups the original color and five complimentary colors.



4293686415



4294957537



4291851500



4286605678



4278190080



4286611584



# Same Dimension

The Same Dimension uses a secret algorithm to generate beautiful new colors.



4293686415



4294927238



4293694580



4285885036



4290052137



4281729036



# Inverse Universe

The Inverse Universe completely reimagines the original color for something new.



4293686415



4294927238



4285844716



4285885036



4290052137



4281729036



# Previews

## White Background



This preview shows how the Android color 4293686415 looks on a white background.

## Color Contrast Check

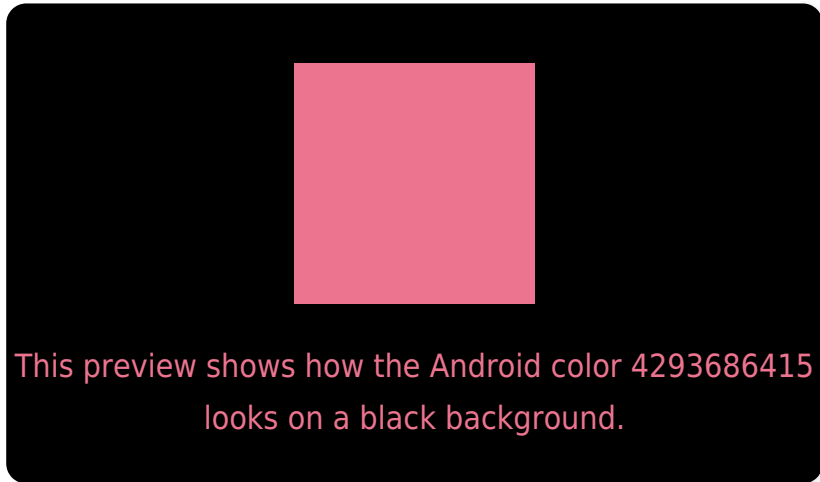
Large Text (above 18pt) WCAG AA × Fail

Any Text WCAG AA × Fail

Large Text (above 18pt) WCAG AAA × Fail

Any Text WCAG AAA × Fail

# Black Background



## Color Contrast Check

Large Text (above 18pt) WCAG AA ✓ Pass

Any Text WCAG AA ✓ Pass

Large Text (above 18pt) WCAG AAA ✓ Pass

Any Text WCAG AAA ✓ Pass

If you want to check with other color combinations, try the [Color Contrast Checker](#).



# Android 4293686415 Background



This preview shows how black text looks on a background with the Android color 4293686415.



This preview shows how white text looks on a background with the Android color 4293686415.

# Color Blindness Simulation

Color vision deficiency is a very complex topic, and I could not describe the different causes any better than Wikipedia does, so if you want to learn more, you should check out their [article about color blindness](#).

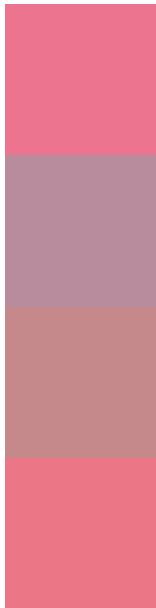
## Dichromacy





**Tritanopia**  
4293621631

# Trichromacy



**Original Color**  
4293686415

**Protanomaly**  
4290284700

**Deuteranomaly**  
4291135884

**Tritanomaly**  
4293621381

# Monochromacy



**Original Color**  
4293686415

**Achromatopsia**  
4288387995

**Achromatomaly**  
4290284951

# CSS Examples

## Text

The CSS property to change the color of the text to Android 4293686415 is called "color". The color property can be set on classes, ids or directly on the HTML element.

This example shows how text in the color `rgb(236, 116, 143)` looks like.

```
.text, #text, p{  
    color:rgb(236, 116, 143)  
}
```

If you want to add a text shadow in that color use the text-shadow property, you can generate a text shadow directly with our [CSS Text Shadow Generator](#).

Here you see how black text with a 4 pixel rgb(236, 116, 143) colored shadow looks like.

```
.shadow{ text-shadow: 4px 4px 2px rgb(236, 116, 143) }
```

## Border

The CSS property to change the border of an element to Android 4293686415 is called "border". The border property can be set on classes, ids or directly on the HTML element.

This example shows the color as border, it can be applied via the CSS property "border" or "border-color".

```
.border, #border, table{ border:4px solid rgb(236, 116, 143) }
```

If only the border color should be changed use the property `border-color`.

```
.border{ border-color:rgb(236, 116, 143) }
```

If you want to add a box shadow in that color use:

Here you see how a box with a 4 pixel `rgb(236, 116, 143)` colored shadow looks like.

```
.boxshadow{ -moz-box-shadow:4px 4px 4px  
4px rgb(236, 116, 143); -webkit-box-  
shadow:4px 4px 4px 4px rgb(236, 116, 143);  
box-shadow:4px 4px 4px 4px rgb(236, 116,  
143) }
```

# Background

The CSS property to change the background color of an element to Android 4293686415 is called "background". The background property can be set on classes, ids or directly on the HTML element.

```
.background, #background, body{  
background: rgb(236, 116, 143) }
```

If only the background color should be changed can be used:

```
.background{ background-color: rgb(236,  
116, 143) }
```

This example shows the color as background, it is applied via the CSS property "background".

To optimize and compress your CSS code, you can use our [online CSS compressor and optimizer](#) based on csstidy. If you want to create a linear or radial gradient as background or border, check our [CSS Gradient Generator](#).



Hey! You found this booklet interesting? Support Converting Colors with the new Membership Option!

The pro membership hides all ads, plus gives you double the colors in the color bucket, and more awesome pro features!

**[Learn more, Memberships starting at \\$2.50/m!](#)**

**Follow me  
on Twitter!**

@ConvertingColor