

# Converting Colors

Android(4293689755)

Have a look what the booklet for  
Android(4293689755) contains.

<b>Android(4293689755)</b> .....	3
<i><b>Conversions</b></i> .....	4
<i><b>Details</b></i> .....	6
<i><b>Harmonies</b></i> .....	11
<i><b>Previews</b></i> .....	23
<i><b>Color Blindness Simulation</b></i> .....	26
<i><b>CSS Examples</b></i> .....	29

# **Color**

**Android(4293689755)**

# Conversions

## Conversions Part 1

Format	Color
Hex	EC819B
RGB	236, 129, 155
RGB Percent	93%, 51%, 61%
CMY	0.0745, 0.4941, 0.3922
CMYK	0.00, 0.45, 0.34, 0.07
HSL	345°, 74%, 72%
HSV	345°, 45%, 93%
XYZ	48.3587, 35.8999, 35.3909
YIQ	163.9570, 55.4260, 30.7700

# Conversions

## Conversions Part 2

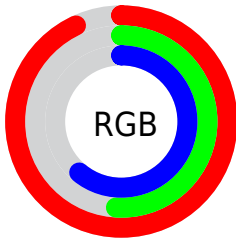
Format	Color
R <sub>Y</sub> B	236, 129, 155
Decimal	15499675
CIE Lab	66.44, 43.80, 4.63
CIE LCh	66, 44.046, 6.036
Yxy	35.8999, 0.4042, 0.3000
Android (android.graphics.Color)	4293689755 (0xFFEC819B)
YUV	163.9570, -4.4158, 63.1817
Hunter-Lab	59.9166, 39.2136, 6.9207

# Details

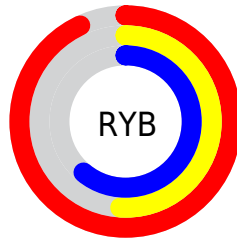
The Android color **4293689755** is a light color, and the websafe version is hex **FF9999**. A complement of this color would be **4286704850**, and the grayscale version is **4288980132**.

A 20% lighter version of the original color is **4294949073**, and **4289809512** is the 20% darker color. If you saturate the color by 10%, you get **4293683593**, and if you desaturate by 10%, it is **4293695917**.

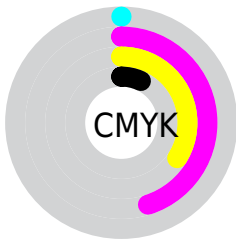
# Distribution



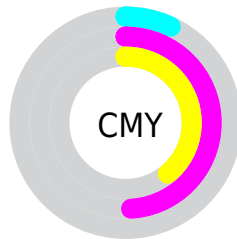
- Red (93%)
- Green (51%)
- Blue (61%)



- Red (93%)
- Yellow (51%)
- Blue (61%)



- Cyan (0%)
- Magenta (45%)
- Yellow (34%)
- Black (7%)



- Cyan (7%)
- Magenta (49%)
- Yellow (39%)

# Brightness & Saturation Gradients

These gradients show how the Android color 4293689755 changes by changing the brightness by 10 percent. The first figure shows a shift by +10% for each color and the second figure -10%.

Similar to the brightness gradients but the following saturation gradients show a change of the Android color 4293689755 by changing the saturation by 10% instead.



 4293689755

 4293689755

4294967295

 4291716737

 4294949073

 4289809512

 4294956270

 4287967824

 4294963711

 4286125625

 4284284964

 4282515470

 4280877057

 4278190080

 4293689755

 4293689755

 4293683593

 4293695917

 4293677687

 4293701823

 4293671525

 4293707985

 4293665620

 4293713890

 4293659458

 4293720052

 4293656633

 4293722111

# Harmonies

## Analogous

The Analogous color harmony consists of three colors that are next to each other on the color wheel.



4292446147



4293689755



4293494645

# Triad

The Triadic color harmony groups three colors that are evenly spaced from another and form a triangle on the color wheel.



4293689755



4287147360



4278234857

# Complementary

The Complementary color scheme is a pair of colors which are on the opposite of each other on the color wheel.



4293689755



4286704850

# Split Complementary

Split-complementary colors differ from the complementary color scheme. The scheme consists of three colors, the original color and two neighbors of the complement color.



4278236623



4293689755



4283741312

# Square

The Square scheme is like the rectangle color scheme, but the four colors are evenly spaced on the color wheel.



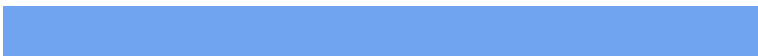
4293689755



4289897041



4278236841



4285572080

# Rectangle

The Rectangle color scheme consists of four colors that form a rectangle on the color wheel.



4293689755



4292710241



4278236841



4278235618



# Sweetspot

The Sweet Spot groups the original color and five complimentary colors.



4293689755



4294958052



4291920364



4286605935



4278190080



4286611584



# Same Dimension

The Same Dimension uses a secret algorithm to generate beautiful new colors.



4293689755



4294931863



4293696641



4285885036



4290052140



4281729037



# Inverse Universe

The Inverse Universe completely reimagines the original color for something new.



4293689755



4294931863



4286697964



4285885036



4290052140



4281729037



# Previews

## White Background



This preview shows how the Android color 4293689755 looks on a white background.

## Color Contrast Check

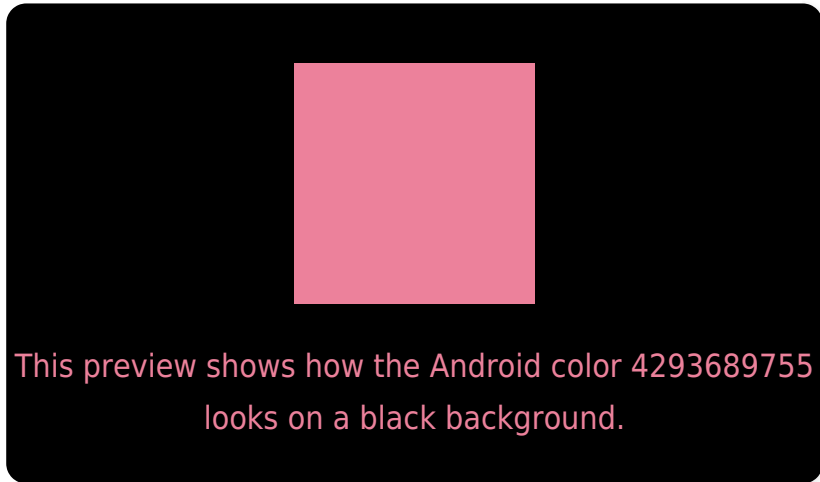
Large Text (above 18pt) WCAG AA × Fail

Any Text WCAG AA × Fail

Large Text (above 18pt) WCAG AAA × Fail

Any Text WCAG AAA × Fail

# Black Background



## Color Contrast Check

Large Text (above 18pt) WCAG AA ✓ Pass

Any Text WCAG AA ✓ Pass

Large Text (above 18pt) WCAG AAA ✓ Pass

Any Text WCAG AAA ✓ Pass

If you want to check with other color combinations, try the [Color Contrast Checker](#).



# Android 4293689755 Background



This preview shows how black text looks on a background with the Android color 4293689755.




This preview shows how white text looks on a background with the Android color 4293689755.

# Color Blindness Simulation

Color vision deficiency is a very complex topic, and I could not describe the different causes any better than Wikipedia does, so if you want to learn more, you should check out their [article about color blindness](#).

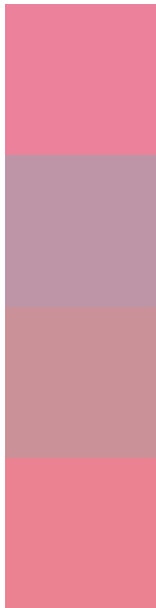
## Dichromacy





**Tritanopia**  
4293624717

# Trichromacy



**Original Color**  
4293689755

**Protanomaly**  
4290614694

**Deuteranomaly**  
4291465880

**Tritanomaly**  
4293624466

# Monochromacy



**Original Color**  
4293689755

**Achromatopsia**  
4288980132

**Achromatomaly**  
4290680737

# CSS Examples

## Text

The CSS property to change the color of the text to Android 4293689755 is called "color". The color property can be set on classes, ids or directly on the HTML element.

This example shows how text in the color `rgb(236, 129, 155)` looks like.

```
.text, #text, p{  
    color:rgb(236, 129, 155)  
}
```

If you want to add a text shadow in that color use the text-shadow property, you can generate a text shadow directly with our [CSS Text Shadow Generator](#).

Here you see how black text with a 4 pixel rgb(236, 129, 155) colored shadow looks like.

```
.shadow{ text-shadow: 4px 4px 2px rgb(236, 129, 155) }
```

## Border

The CSS property to change the border of an element to Android 4293689755 is called "border". The border property can be set on classes, ids or directly on the HTML element.

This example shows the color as border, it can be applied via the CSS property "border" or "border-color".

```
.border, #border, table{ border:4px solid rgb(236, 129, 155) }
```

If only the border color should be changed use the property `border-color`.

```
.border{ border-color:rgb(236, 129, 155) }
```

If you want to add a box shadow in that color use:

Here you see how a box with a 4 pixel `rgb(236, 129, 155)` colored shadow looks like.

```
.boxshadow{ -moz-box-shadow:4px 4px 4px 4px rgb(236, 129, 155); -webkit-box-shadow:4px 4px 4px 4px rgb(236, 129, 155); box-shadow:4px 4px 4px 4px rgb(236, 129, 155) }
```

# Background

The CSS property to change the background color of an element to Android 4293689755 is called "background". The background property can be set on classes, ids or directly on the HTML element.

```
.background, #background, body{  
background: rgb(236, 129, 155) }
```

If only the background color should be changed can be used:

```
.background{ background-color: rgb(236,  
129, 155) }
```

This example shows the color as background, it is applied via the CSS property "background".

To optimize and compress your CSS code, you can use our [online CSS compressor and optimizer](#) based on csstidy. If you want to create a linear or radial gradient as background or border, check our [CSS Gradient Generator](#).



Hey! You found this booklet interesting? Support Converting Colors with the new Membership Option!

The pro membership hides all ads, plus gives you double the colors in the color bucket, and more awesome pro features!

**[Learn more, Memberships starting at \\$2.50/m!](#)**

**Follow me  
on Twitter!**

@ConvertingColor