

Converting Colors

Android(4293696434)

Have a look what the booklet for
Android(4293696434) contains.

Android(4293696434)	3
<i>Conversions</i>	4
<i>Details</i>	6
<i>Harmonies</i>	11
<i>Previews</i>	23
<i>Color Blindness Simulation</i>	26
<i>CSS Examples</i>	29

Color

Android(4293696434)

Conversions

Conversions Part 1

Format	Color
Hex	EC9BB2
RGB	236, 155, 178
RGB Percent	93%, 61%, 70%
CMY	0.0745, 0.3922, 0.3020
CMYK	0.00, 0.34, 0.25, 0.07
HSL	343°, 68%, 77%
HSV	343°, 34%, 93%
XYZ	54.3493, 44.4899, 47.8424
YIQ	181.8410, 40.8930, 24.3250

Conversions

Conversions Part 2

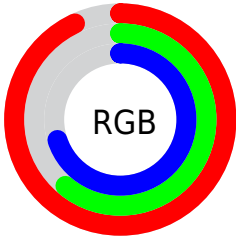
Format	Color
R_{YB}	236, 155, 178
Decimal	15506354
CIE _{Lab}	72.55, 33.31, 0.63
CIE _{LCh}	73, 33.311, 1.088
Yxy	44.4899, 0.3705, 0.3033
Android (android.graphics.Color)	4293696434 (0xFFEC9BB2)
YUV	181.8410, -1.8936, 47.4974
Hunter-Lab	66.7008, 28.7195, 4.1637

Details

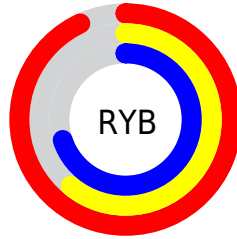
The Android color `4293696434` is a light color, and the websafe version is hex `FF99CC`. A complement of this color would be `4288408789`, and the grayscale version is `4290164406`.

A 20% lighter version of the original color is `4294955754`, and `4289947517` is the 20% darker color. If you saturate the color by 10%, you get `4293690273`, and if you desaturate by 10%, it is `4293702595`.

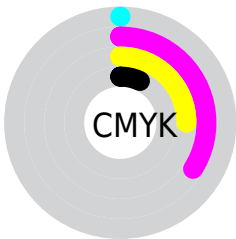
Distribution



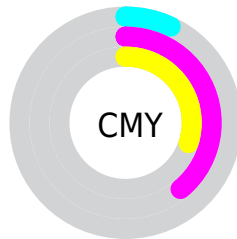
- Red (93%)
- Green (61%)
- Blue (70%)



- Red (93%)
- Yellow (61%)
- Blue (70%)



- Cyan (0%)
- Magenta (34%)
- Yellow (25%)
- Black (7%)



- Cyan (7%)
- Magenta (39%)
- Yellow (30%)

Brightness & Saturation Gradients

These gradients show how the Android color 4293696434 changes by changing the brightness by 10 percent. The first figure shows a shift by +10% for each color and the second figure -10%.

Similar to the brightness gradients but the following saturation gradients show a change of the Android color 4293696434 by changing the saturation by 10% instead.

 4293696434

 4293696434

4294967295

 4291788951

 4294955754

 4289947517

 4294963199

 4288105829

 4286330189

 4284554550

 4282843425

 4281401353

 4278386688

 4278190080

 4293696434

 4293696434

 4293690273

 4293702595

 4293684368

 4293708500

 4293678207

 4293714661

 4293672302

 4293720566

 4293666142

 4293722111

 4293659981

 4293656643

Harmonies

Analogous

The Analogous color harmony consists of three colors that are next to each other on the color wheel.



4292518096



4293696434



4293762708

Triad

The Triadic color harmony groups three colors that are evenly spaced from another and form a triangle on the color wheel.



4293696434



4289116797



4284399078

Complementary

The Complementary color scheme is a pair of colors which are on the opposite of each other on the color wheel.



4293696434



4288408789

Split Complementary

Split-complementary colors differ from the complementary color scheme. The scheme consists of three colors, the original color and two neighbors of the complement color.



4283089616



4293696434



4286759060

Square

The Square scheme is like the rectangle color scheme, but the four colors are evenly spaced on the color wheel.



4293696434



4291211381



4284466098



4287345902

Rectangle

The Rectangle color scheme consists of four colors that form a rectangle on the color wheel.



4293696434



4293239684



4284466098



4283678688

Sweetspot

The Sweet Spot groups the original color and five complimentary colors.



4293696434



4294960877



4292123628



4286607477



4278190080



4286611584

Same Dimension

The Same Dimension uses a secret algorithm to generate beautiful new colors.



4293696434



4294940340



4293700507



4285885037



4290052147



4281729039

Inverse Universe

The Inverse Universe completely reimagines the original color for something new.



4293696434



4294940340



4288404716



4285885037



4290052147



4281729039

Previews

White Background



This preview shows how the Android color 4293696434 looks on a white background.

Color Contrast Check

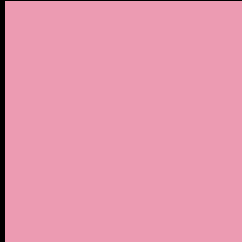
Large Text (above 18pt) WCAG AA × Fail

Any Text WCAG AA × Fail

Large Text (above 18pt) WCAG AAA × Fail

Any Text WCAG AAA × Fail

Black Background



This preview shows how the Android color 4293696434 looks on a black background.

Color Contrast Check

Large Text (above 18pt) WCAG AA ✓ Pass

Any Text WCAG AA ✓ Pass

Large Text (above 18pt) WCAG AAA ✓ Pass

Any Text WCAG AAA ✓ Pass

If you want to check with other color combinations, try the [Color Contrast Checker](#).

Android 4293696434 Background



This preview shows how black text looks on a background with the Android color 4293696434.



This preview shows how white text looks on a background with the Android color 4293696434.

Color Blindness Simulation

Color vision deficiency is a very complex topic, and I could not describe the different causes any better than Wikipedia does, so if you want to learn more, you should check out their [article about color blindness](#).


Dichromacy



Original Color
4293696434

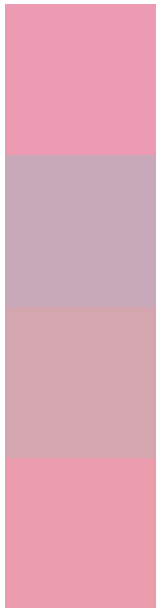
Protanopia
4289900991

Deuteranopia
4291145135



Tritanopia
4293631400

Trichromacy



Original Color
4293696434

Protanomaly
4291275194

Deuteranomaly
4292060848

Tritanomaly
4293631148

Monochromacy



Original Color
4293696434

Achromatopsia
4290164406

Achromatomaly
4291472565

CSS Examples

Text

The CSS property to change the color of the text to Android 4293696434 is called "color". The color property can be set on classes, ids or directly on the HTML element.

This example shows how text in the color `rgb(236, 155, 178)` looks like.

```
.text, #text, p{  
    color:rgb(236, 155, 178)  
}
```

If you want to add a text shadow in that color use the text-shadow property, you can generate a text shadow directly with our [CSS Text Shadow Generator](#).

Here you see how black text with a 4 pixel rgb(236, 155, 178) colored shadow looks like.

```
.shadow{ text-shadow: 4px 4px 2px rgb(236, 155, 178) }
```

Border

The CSS property to change the border of an element to Android 4293696434 is called "border". The border property can be set on classes, ids or directly on the HTML element.

This example shows the color as border, it can be applied via the CSS property "border" or "border-color".

```
.border, #border, table{ border:4px solid rgb(236, 155, 178) }
```

If only the border color should be changed use the property `border-color`.

```
.border{ border-color:rgb(236, 155, 178) }
```

If you want to add a box shadow in that color use:

Here you see how a box with a 4 pixel `rgb(236, 155, 178)` colored shadow looks like.

```
.boxshadow{ -moz-box-shadow:4px 4px 4px 4px rgb(236, 155, 178); -webkit-box-shadow:4px 4px 4px 4px rgb(236, 155, 178); box-shadow:4px 4px 4px 4px rgb(236, 155, 178) }
```

Background

The CSS property to change the background color of an element to Android 4293696434 is called "background". The background property can be set on classes, ids or directly on the HTML element.

```
.background, #background, body{  
background: rgb(236, 155, 178) }
```

If only the background color should be changed can be used:

```
.background{ background-color: rgb(236,  
155, 178) }
```

This example shows the color as background, it is applied via the CSS property "background".

To optimize and compress your CSS code, you can use our [online CSS compressor and optimizer](#) based on csstidy. If you want to create a linear or radial gradient as background or border, check our [CSS Gradient Generator](#).

Hey! You found this booklet interesting? Support Converting Colors with the new Membership Option!

The pro membership hides all ads, plus gives you double the colors in the color bucket, and more awesome pro features!

[Learn more, Memberships starting at \\$2.50/m!](#)

**Follow me
on Twitter!**

@ConvertingColor