

# Converting Colors

Android(4293696694)

Have a look what the booklet for  
Android(4293696694) contains.

<b>Android(4293696694)</b> .....	3
<i><b>Conversions</b></i> .....	4
<i><b>Details</b></i> .....	6
<i><b>Harmonies</b></i> .....	11
<i><b>Previews</b></i> .....	23
<i><b>Color Blindness Simulation</b></i> .....	26
<i><b>CSS Examples</b></i> .....	29

# **Color**

**Android(4293696694)**

# Conversions

## Conversions Part 1

<b>Format</b>	<b>Color</b>
Hex	EC9CB6
RGB	236, 156, 182
RGB Percent	93%, 61%, 71%
CMY	0.0745, 0.3882, 0.2863
CMYK	0.00, 0.34, 0.23, 0.07
HSL	340°, 68%, 77%
HSV	340°, 34%, 93%
XYZ	54.9240, 44.9872, 50.0446
YIQ	182.8840, 39.3340, 25.0460

# Conversions

## Conversions Part 2

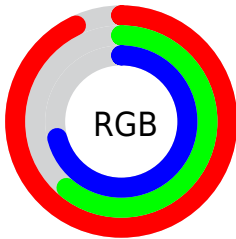
Format	Color
R <sub>Y</sub> B	236, 156, 182
Decimal	15506614
CIE Lab	72.88, 33.35, -1.10
CIE LCh	73, 33.364, 358.113
Yxy	44.9872, 0.3663, 0.3000
Android (android.graphics.Color)	4293696694 (0xFFEC9CB6)
YUV	182.8840, -0.4358, 46.5827
Hunter-Lab	67.0725, 28.7924, 2.7129

# Details

The Android color `4293696694` is a light color, and the websafe version is hex `FF99CC`. A complement of this color would be `4288474322`, and the grayscale version is `4290230199`.

A 20% lighter version of the original color is `4294956014`, and `4289947777` is the 20% darker color. If you saturate the color by 10%, you get `4293690534`, and if you desaturate by 10%, it is `4293702854`.

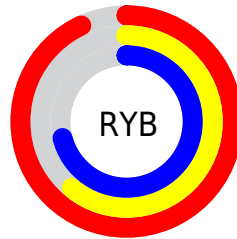
# Distribution



Red (93%)

Green (61%)

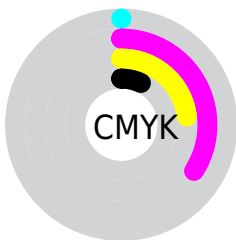
Blue (71%)



Red (93%)

Yellow (61%)

Blue (71%)

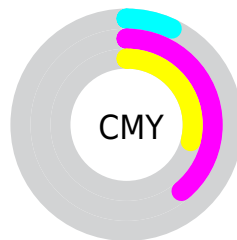


Cyan (0%)

Magenta (34%)

Yellow (23%)

Black (7%)



Cyan (7%)

Magenta (39%)

Yellow (29%)

# Brightness & Saturation Gradients

These gradients show how the Android color 4293696694 changes by changing the brightness by 10 percent. The first figure shows a shift by +10% for each color and the second figure -10%.

Similar to the brightness gradients but the following saturation gradients show a change of the Android color 4293696694 by changing the saturation by 10% instead.



 4293696694

 4293696694

4294967295

 4291789211

 4294956014

 4289947777

 4294963455

 4288106088

 4286330448

 4284554809

 4282909220

 4281401358

 4278648832

 4278190080

 4293696694

 4293696694

 4293690534

 4293702854

 4293684630

 4293708758

 4293678470

 4293714918

 4293672566

 4293720822

 4293666406

 4293722111

 4293660246

 4293656653

# Harmonies

## Analogous

The Analogous color harmony consists of three colors that are next to each other on the color wheel.



4292387540



4293696694



4293893784

# Triad

The Triadic color harmony groups three colors that are evenly spaced from another and form a triangle on the color wheel.



4293696694



4289378940



4284202982

# Complementary

The Complementary color scheme is a pair of colors which are on the opposite of each other on the color wheel.



4293696694



4288474322

# Split Complementary

Split-complementary colors differ from the complementary color scheme. The scheme consists of three colors, the original color and two neighbors of the complement color.



4283220943



4293696694



4287021202

# Square

The Square scheme is like the rectangle color scheme, but the four colors are evenly spaced on the color wheel.



4293696694



4291473526



4284728240



4287084271

# Rectangle

The Rectangle color scheme consists of four colors that form a rectangle on the color wheel.



4293696694



4293436295



4284728240



4283547871



# Sweetspot

The Sweet Spot groups the original color and five complimentary colors.



4293696694



4294960878



4291927276



4286607477



4278190080



4286611584



# Same Dimension

The Same Dimension uses a secret algorithm to generate beautiful new colors.



4293696694



4294940344



4293699996



4285885037



4290052155



4281729041



# Inverse Universe

The Inverse Universe completely reimagines the original color for something new.



4293696694



4294940344



4288471020



4285885037



4290052155



4281729041



# Previews

## White Background



This preview shows how the Android color 4293696694 looks on a white background.

## Color Contrast Check

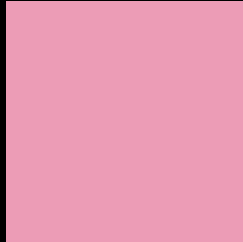
Large Text (above 18pt) WCAG AA × Fail

Any Text WCAG AA × Fail

Large Text (above 18pt) WCAG AAA × Fail

Any Text WCAG AAA × Fail

# Black Background



This preview shows how the Android color 4293696694 looks on a black background.

## Color Contrast Check

Large Text (above 18pt) WCAG AA ✓ Pass

Any Text WCAG AA ✓ Pass

Large Text (above 18pt) WCAG AAA ✓ Pass

Any Text WCAG AAA ✓ Pass

If you want to check with other color combinations, try the [Color Contrast Checker](#).



# Android 4293696694 Background



This preview shows how black text looks on a background with the Android color 4293696694.



This preview shows how white text looks on a background with the Android color 4293696694.

# Color Blindness Simulation

Color vision deficiency is a very complex topic, and I could not describe the different causes any better than Wikipedia does, so if you want to learn more, you should check out their [article about color blindness](#).

## Dichromacy



**Original Color**  
4293696694

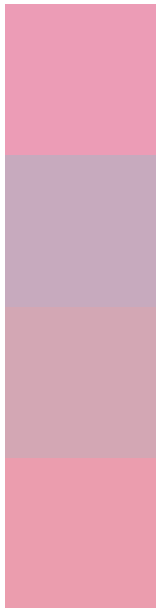
**Protanopia**  
4289901251

**Deuteranopia**  
4291145395



**Tritanopia**  
4293631658

# Trichromacy



**Original Color**  
4293696694

**Protanomaly**  
4291275454

**Deuteranomaly**  
4292061108

**Tritanomaly**  
4293631406

# Monochromacy



**Original Color**  
4293696694

**Achromatopsia**  
4290230199

**Achromatomaly**  
4291472823

# CSS Examples

## Text

The CSS property to change the color of the text to Android 4293696694 is called "color". The color property can be set on classes, ids or directly on the HTML element.

This example shows how text in the color `rgb(236, 156, 182)` looks like.

```
.text, #text, p{  
    color:rgb(236, 156, 182)  
}
```

If you want to add a text shadow in that color use the text-shadow property, you can generate a text shadow directly with our [CSS Text Shadow Generator](#).

Here you see how black text with a 4 pixel rgb(236, 156, 182) colored shadow looks like.

```
.shadow{ text-shadow: 4px 4px 2px rgb(236, 156, 182) }
```

## Border

The CSS property to change the border of an element to Android 4293696694 is called "border". The border property can be set on classes, ids or directly on the HTML element.

This example shows the color as border, it can be applied via the CSS property "border" or "border-color".

```
.border, #border, table{ border:4px solid rgb(236, 156, 182) }
```

If only the border color should be changed use the property `border-color`.

```
.border{ border-color:rgb(236, 156, 182) }
```

If you want to add a box shadow in that color use:

Here you see how a box with a 4 pixel `rgb(236, 156, 182)` colored shadow looks like.

```
.boxshadow{ -moz-box-shadow:4px 4px 4px  
4px rgb(236, 156, 182); -webkit-box-  
shadow:4px 4px 4px 4px rgb(236, 156, 182);  
box-shadow:4px 4px 4px 4px rgb(236, 156,  
182) }
```

# Background

The CSS property to change the background color of an element to Android 4293696694 is called "background". The background property can be set on classes, ids or directly on the HTML element.

```
.background, #background, body{  
background: rgb(236, 156, 182) }
```

If only the background color should be changed can be used:

```
.background{ background-color: rgb(236,  
156, 182) }
```

This example shows the color as background, it is applied via the CSS property "background".

To optimize and compress your CSS code, you can use our [online CSS compressor and optimizer](#) based on csstidy. If you want to create a linear or radial gradient as background or border, check our [CSS Gradient Generator](#).



Hey! You found this booklet interesting? Support Converting Colors with the new Membership Option!

The pro membership hides all ads, plus gives you double the colors in the color bucket, and more awesome pro features!

**[Learn more, Memberships starting at \\$2.50/m!](#)**

**Follow me  
on Twitter!**

@ConvertingColor