

Converting Colors

Android(4293698223)

Have a look what the booklet for
Android(4293698223) contains.

| | |
|--|----|
| Android(4293698223) | 3 |
| <i>Conversions</i> | 4 |
| <i>Details</i> | 6 |
| <i>Harmonies</i> | 11 |
| <i>Previews</i> | 23 |
| <i>Color Blindness Simulation</i> | 26 |
| <i>CSS Examples</i> | 29 |

Color

Android(4293698223)

Conversions

Conversions Part 1

| Format | Color |
|-------------|----------------------------|
| Hex | ECA2AF |
| RGB | 236, 162, 175 |
| RGB Percent | 93%, 64%, 69% |
| CMY | 0.0745, 0.3647, 0.3137 |
| CMYK | 0.00, 0.31, 0.26, 0.07 |
| HSL | 349°, 66%, 78% |
| HSV | 349°, 31%, 93% |
| XYZ | 55.2503, 46.7687, 46.6727 |
| YIQ | 185.6080, 39.9310, 19.7310 |

Conversions

Conversions Part 2

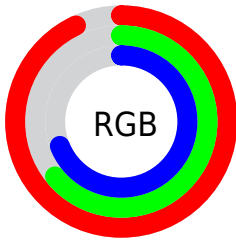
| Format | Color |
|-------------------------------------|-------------------------------|
| R _Y B | 236, 162, 175 |
| Decimal | 15508143 |
| CIE Lab | 74.04, 29.18, 4.45 |
| CIE LCh | 74, 29.514, 8.663 |
| Yxy | 46.7687, 0.3716, 0.3145 |
| Android (android.graphics.Color) | 4293698223 (0xFFECA2AF) |
| YUV | 185.6080, -5.2297, 44.1938 |
| Hunter-Lab | 68.3876, 24.5316, 7.4075 |

Details

The Android color `4293698223` is a light color, and the websafe version is hex `CC9999`. A complement of this color would be `4288867551`, and the grayscale version is `4290427578`.

A 20% lighter version of the original color is `4294957542`, and `4289949307` is the 20% darker color. If you saturate the color by 10%, you get `4293692060`, and if you desaturate by 10%, it is `4293704386`.

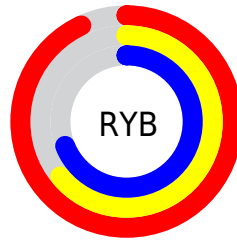
Distribution



Red (93%)

Green (64%)

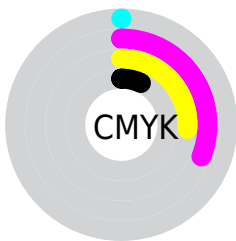
Blue (69%)



Red (93%)

Yellow (64%)

Blue (69%)

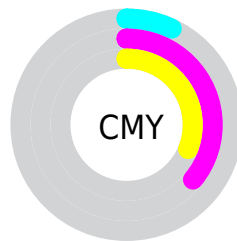


Cyan (0%)

Magenta (31%)

Yellow (26%)

Black (7%)



Cyan (7%)

Magenta (36%)

Yellow (31%)

Brightness & Saturation Gradients

These gradients show how the Android color 4293698223 changes by changing the brightness by 10 percent. The first figure shows a shift by +10% for each color and the second figure -10%.

Similar to the brightness gradients but the following saturation gradients show a change of the Android color 4293698223 by changing the saturation by 10% instead.

 4293698223

 4293698223

4294967295

 4291790740

 4294957542

 4289949307

 4294964991

 4288107618

 4286331978

 4284622132

 4282911775

 4281401349

 4278779904

 4278190080

 4293698223

 4293698223

 4293692060

 4293704386

 4293686152

 4293710294

 4293679989

 4293716457

 4293674081

 4293722109

 4293667918

 4293722111

 4293661754

 4293656617

Harmonies

Analogous

The Analogous color harmony consists of three colors that are next to each other on the color wheel.



4292847050



4293698223



4293568149

Triad

The Triadic color harmony groups three colors that are evenly spaced from another and form a triangle on the color wheel.



4293698223



4288987019



4286168808

Complementary

The Complementary color scheme is a pair of colors which are on the opposite of each other on the color wheel.



4293698223



4288867551

Split Complementary

Split-complementary colors differ from the complementary color scheme. The scheme consists of three colors, the original color and two neighbors of the complement color.



4284728279



4293698223



4286890913

Square

The Square scheme is like the rectangle color scheme, but the four colors are evenly spaced on the color wheel.



4293698223



4290951040



4285187517



4288657131

Rectangle

The Rectangle color scheme consists of four colors that form a rectangle on the color wheel.



4293698223



4292979593



4285187517



4285513955

Sweetspot

The Sweet Spot groups the original color and five complimentary colors.



4293698223



4294961388



4292780780



4286607732



4278190080



4286611584

Same Dimension

The Same Dimension uses a secret algorithm to generate beautiful new colors.



4293698223



4294942383



4293704098



4285885036



4290052128



4281729033

Inverse Universe

The Inverse Universe completely reimagines the original color for something new.



4293698223



4294942383



4288861676



4285885036



4290052128



4281729033

Previews

White Background



This preview shows how the Android color 4293698223 looks on a white background.

Color Contrast Check

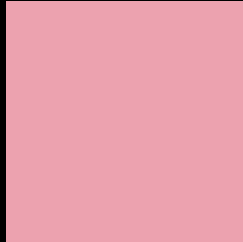
Large Text (above 18pt) WCAG AA × Fail

Any Text WCAG AA × Fail

Large Text (above 18pt) WCAG AAA × Fail

Any Text WCAG AAA × Fail

Black Background



This preview shows how the Android color 4293698223 looks on a black background.

Color Contrast Check

Large Text (above 18pt) WCAG AA ✓ Pass

Any Text WCAG AA ✓ Pass

Large Text (above 18pt) WCAG AAA ✓ Pass

Any Text WCAG AAA ✓ Pass

If you want to check with other color combinations, try the [Color Contrast Checker](#).

Android 4293698223 Background



This preview shows how black text looks on a background with the Android color 4293698223.



This preview shows how white text looks on a background with the Android color 4293698223.

Color Blindness Simulation

Color vision deficiency is a very complex topic, and I could not describe the different causes any better than Wikipedia does, so if you want to learn more, you should check out their [article about color blindness](#).


Dichromacy



Original Color
4293698223

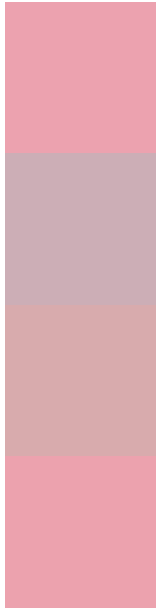
Protanopia
4290360762

Deuteranopia
4291604652



Tritanopia
4293698222

Trichromacy



Original Color
4293698223

Protanomaly
4291604150

Deuteranomaly
4292389805

Tritanomaly
4293698222

Monochromacy



Original Color
4293698223

Achromatopsia
4290427578

Achromatomaly
4291604918

CSS Examples

Text

The CSS property to change the color of the text to Android 4293698223 is called "color". The color property can be set on classes, ids or directly on the HTML element.

This example shows how text in the color `rgb(236, 162, 175)` looks like.

```
.text, #text, p{  
    color:rgb(236, 162, 175)  
}
```

If you want to add a text shadow in that color use the text-shadow property, you can generate a text shadow directly with our [CSS Text Shadow Generator](#).

Here you see how black text with a 4 pixel rgb(236, 162, 175) colored shadow looks like.

```
.shadow{ text-shadow: 4px 4px 2px rgb(236, 162, 175) }
```

Border

The CSS property to change the border of an element to Android 4293698223 is called "border". The border property can be set on classes, ids or directly on the HTML element.

This example shows the color as border, it can be applied via the CSS property "border" or "border-color".

```
.border, #border, table{ border:4px solid rgb(236, 162, 175) }
```

If only the border color should be changed use the property `border-color`.

```
.border{ border-color:rgb(236, 162, 175) }
```

If you want to add a box shadow in that color use:

Here you see how a box with a 4 pixel `rgb(236, 162, 175)` colored shadow looks like.

```
.boxshadow{ -moz-box-shadow:4px 4px 4px  
4px rgb(236, 162, 175); -webkit-box-  
shadow:4px 4px 4px 4px rgb(236, 162, 175);  
box-shadow:4px 4px 4px 4px rgb(236, 162,  
175) }
```

Background

The CSS property to change the background color of an element to Android 4293698223 is called "background". The background property can be set on classes, ids or directly on the HTML element.

```
.background, #background, body{  
background: rgb(236, 162, 175) }
```

If only the background color should be changed can be used:

```
.background{ background-color: rgb(236,  
162, 175) }
```

This example shows the color as background, it is applied via the CSS property "background".

To optimize and compress your CSS code, you can use our [online CSS compressor and optimizer](#) based on csstidy. If you want to create a linear or radial gradient as background or border, check our [CSS Gradient Generator](#).

Hey! You found this booklet interesting? Support Converting Colors with the new Membership Option!

The pro membership hides all ads, plus gives you double the colors in the color bucket, and more awesome pro features!

[Learn more, Memberships starting at \\$2.50/m!](#)

**Follow me
on Twitter!**

@ConvertingColor