

Converting Colors

Android(4293710037)

Have a look what the booklet for
Android(4293710037) contains.

Android(4293710037)	3
<i>Conversions</i>	4
<i>Details</i>	6
<i>Harmonies</i>	11
<i>Previews</i>	23
<i>Color Blindness Simulation</i>	26
<i>CSS Examples</i>	29

Color

Android(4293710037)

Conversions

Conversions Part 1

Format	Color
Hex	ECD0D5
RGB	236, 208, 213
RGB Percent	93%, 82%, 84%
CMY	0.0745, 0.1843, 0.1647
CMYK	0.00, 0.12, 0.10, 0.07
HSL	349°, 42%, 87%
HSV	349°, 12%, 93%
XYZ	69.1582, 67.7487, 72.3826
YIQ	216.9420, 15.0830, 7.4910

Conversions

Conversions Part 2

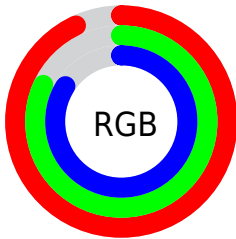
Format	Color
R _Y B	236, 208, 213
Decimal	15519957
CIE Lab	85.88, 10.58, 1.11
CIE LCh	86, 10.633, 5.969
Yxy	67.7487, 0.3304, 0.3237
Android (android.graphics.Color)	4293710037 (0xFFECD0D5)
YUV	216.9420, -1.9434, 16.7139
Hunter-Lab	82.3096, 5.9375, 5.4775

Details

The Android color `4293710037` is a light color, and the websafe version is hex `FFCCCC`. A complement of this color would be `4291882215`, and the grayscale version is `4292467161`.

A 20% lighter version of the original color is `4294967295`, and `4290026142` is the 20% darker color. If you saturate the color by 10%, you get `4293703874`, and if you desaturate by 10%, it is `4293716200`.

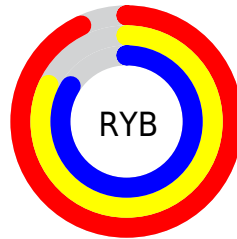
Distribution



Red (93%)

Green (82%)

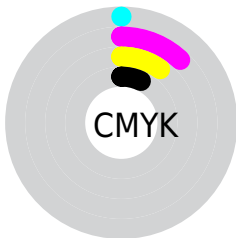
Blue (84%)



Red (93%)

Yellow (82%)

Blue (84%)

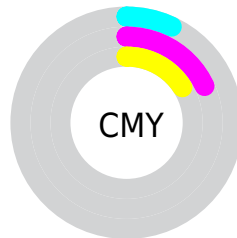


Cyan (0%)

Magenta (12%)

Yellow (10%)

Black (7%)



Cyan (7%)

Magenta (18%)

Yellow (16%)

Brightness & Saturation Gradients


These gradients show how the Android color 4293710037 changes by changing the brightness by 10 percent. The first figure shows a shift by +10% for each color and the second figure -10%.

Similar to the brightness gradients but the following saturation gradients show a change of the Android color 4293710037 by changing the saturation by 10% instead.

 4293710037

 4293710037

4294967295

 4291867833

 4290026142

 4288249988

 4286539627

 4284894803

 4283316284

 4281737766

 4280356114

 4278190080

 4293710037

 4293710037

 4293703874

 4293716200

 4293697966

 4293722108

 4293691803

 4293722111

 4293685895

 4293679732

 4293673569

 4293667661

 4293661498

 4293656618

Harmonies

Analogous

The Analogous color harmony consists of three colors that are next to each other on the color wheel.



4293317087



4293710037



4293710283

Triad

The Triadic color harmony groups three colors that are evenly spaced from another and form a triangle on the color wheel.



4293710037



4292008646



4291091177

Complementary

The Complementary color scheme is a pair of colors which are on the opposite of each other on the color wheel.



4293710037



4291882215

Split Complementary

Split-complementary colors differ from the complementary color scheme. The scheme consists of three colors, the original color and two neighbors of the complement color.



4290698466



4293710037



4291288270

Square

The Square scheme is like the rectangle color scheme, but the four colors are evenly spaced on the color wheel.



4293710037



4292728771



4290764248



4291811307

Rectangle

The Rectangle color scheme consists of four colors that form a rectangle on the color wheel.



4293710037



4293513926



4290764248



4290894823

Sweetspot

The Sweet Spot groups the original color and five complimentary colors.



4293710037



4294964727



4293382380



4286609786



4278190080



4286611584

Same Dimension

The Same Dimension uses a secret algorithm to generate beautiful new colors.



4293710037



4294958050



4293712336



4285885036



4290052128



4281729034

Inverse Universe

The Inverse Universe completely reimagines the original color for something new.



4293710037



4294958050



4291879916



4285885036



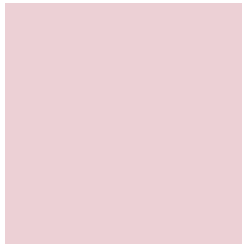
4290052128



4281729034

Previews

White Background



This preview shows how the Android color 4293710037 looks on a white background.

Color Contrast Check

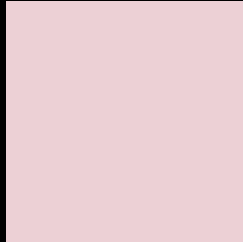
Large Text (above 18pt) WCAG AA × Fail

Any Text WCAG AA × Fail

Large Text (above 18pt) WCAG AAA × Fail

Any Text WCAG AAA × Fail

Black Background



This preview shows how the Android color 4293710037 looks on a black background.

Color Contrast Check

Large Text (above 18pt) WCAG AA ✓ Pass

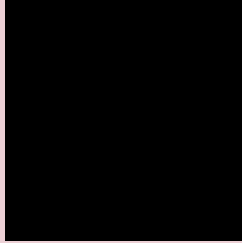
Any Text WCAG AA ✓ Pass

Large Text (above 18pt) WCAG AAA ✓ Pass

Any Text WCAG AAA ✓ Pass

If you want to check with other color combinations, try the [Color Contrast Checker](#).

Android 4293710037 Background



This preview shows how black text looks on a background with the Android color 4293710037.



This preview shows how white text looks on a background with the Android color 4293710037.

Color Blindness Simulation

Color vision deficiency is a very complex topic, and I could not describe the different causes any better than Wikipedia does, so if you want to learn more, you should check out their [article about color blindness](#).

Dichromacy





Tritanopia
4293775071

Trichromacy



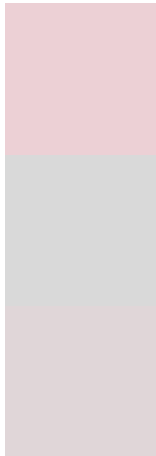
Original Color
4293710037

Protanomaly
4292990167

Deuteranomaly
4293710037

Tritanomaly
4293775323

Monochromacy



Original Color
4293710037

Achromatopsia
4292467161

Achromatomaly
4292925144

CSS Examples

Text

The CSS property to change the color of the text to Android 4293710037 is called "color". The color property can be set on classes, ids or directly on the HTML element.

This example shows how text in the color `rgb(236, 208, 213)` looks like.

```
.text, #text, p{  
    color:rgb(236, 208, 213)  
}
```

If you want to add a text shadow in that color use the text-shadow property, you can generate a text shadow directly with our [CSS Text Shadow Generator](#).

Here you see how black text with a 4 pixel rgb(236, 208, 213) colored shadow looks like.

```
.shadow{ text-shadow: 4px 4px 2px rgb(236, 208, 213) }
```

Border

The CSS property to change the border of an element to Android 4293710037 is called "border". The border property can be set on classes, ids or directly on the HTML element.

This example shows the color as border, it can be applied via the CSS property "border" or "border-color".

```
.border, #border, table{ border:4px solid rgb(236, 208, 213) }
```

If only the border color should be changed use the property `border-color`.

```
.border{ border-color:rgb(236, 208, 213) }
```

If you want to add a box shadow in that color use:

Here you see how a box with a 4 pixel `rgb(236, 208, 213)` colored shadow looks like.

```
.boxshadow{ -moz-box-shadow:4px 4px 4px  
4px rgb(236, 208, 213); -webkit-box-  
shadow:4px 4px 4px 4px rgb(236, 208, 213);  
box-shadow:4px 4px 4px 4px rgb(236, 208,  
213) }
```

Background

The CSS property to change the background color of an element to Android 4293710037 is called "background". The background property can be set on classes, ids or directly on the HTML element.

```
.background, #background, body{  
background: rgb(236, 208, 213) }
```

If only the background color should be changed can be used:

```
.background{ background-color: rgb(236,  
208, 213) }
```

This example shows the color as background, it is applied via the CSS property "background".

To optimize and compress your CSS code, you can use our [online CSS compressor and optimizer](#) based on csstidy. If you want to create a linear or radial gradient as background or border, check our [CSS Gradient Generator](#).

Hey! You found this booklet interesting? Support Converting Colors with the new Membership Option!

The pro membership hides all ads, plus gives you double the colors in the color bucket, and more awesome pro features!

[Learn more, Memberships starting at \\$2.50/m!](#)

**Follow me
on Twitter!**

@ConvertingColor