

Converting Colors

Android(4293726306)

Have a look what the booklet for
Android(4293726306) contains.

Android(4293726306)	3
<i>Conversions</i>	4
<i>Details</i>	6
<i>Harmonies</i>	11
<i>Previews</i>	23
<i>Color Blindness Simulation</i>	26
<i>CSS Examples</i>	29

Color

Android(4293726306)

Conversions

Conversions Part 1

Format	Color
Hex	ED1062
RGB	237, 16, 98
RGB Percent	93%, 6%, 38%
CMY	0.0706, 0.9373, 0.6157
CMYK	0.00, 0.93, 0.59, 0.07
HSL	338°, 87%, 50%
HSV	338°, 93%, 93%
XYZ	37.3149, 19.2569, 13.3055
YIQ	91.4270, 105.3940, 72.3540

Conversions

Conversions Part 2

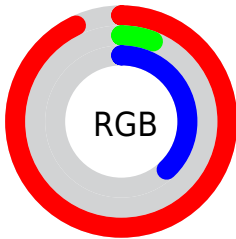
Format	Color
RYB	237, 16, 98
Decimal	15536226
CIELab	50.99, 77.38, 16.25
CIELCh	51, 79.068, 11.857
Yxy	19.2569, 0.5340, 0.2756
Android (android.graphics.Color)	4293726306 (0xFFED1062)
YUV	91.4270, 3.2405, 127.6675
Hunter-Lab	43.8827, 74.9897, 12.7408

Details

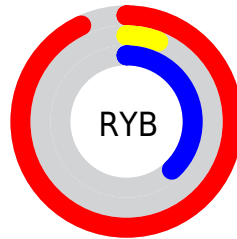
The Android color **4293726306** is a dark color, and the websafe version is hex **FF0066**. The color can be described as dark washed rose. A complement of this color would be **4279299483**, and the grayscale version is **4284177243**.

A 20% lighter version of the original color is **4294926996**, and **4289527860** is the 20% darker color. If you saturate the color by 10%, you get **4293722200**, and if you desaturate by 10%, it is **4293732465**.

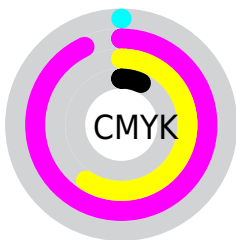
Distribution



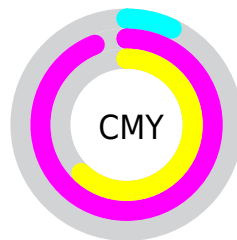
- Red (93%)
- Green (6%)
- Blue (38%)



- Red (93%)
- Yellow (6%)
- Blue (38%)



- Cyan (0%)
- Magenta (93%)
- Yellow (59%)
- Black (7%)



- Cyan (7%)
- Magenta (94%)
- Yellow (62%)

Brightness & Saturation Gradients


These gradients show how the Android color 4293726306 changes by changing the brightness by 10 percent. The first figure shows a shift by +10% for each color and the second figure -10%.

Similar to the brightness gradients but the following saturation gradients show a change of the Android color 4293726306 by changing the saturation by 10% instead.

 4293726306

 4293726306

4294967295

 4291625035

 4294926996

 4289527860

 4294934959

 4287496224

 4294942666

 4285464584

 4294950374

 4283498500

 4294958079

 4281401346

 4294966015

 4278190080

 4293726306

 4293726306

 4293722200

 4293732465

 4293738368

 4293744527

 4293750686

 4293756589

 4293762747

 4293768906

 4293775065

 4293780968

Harmonies

Analogous

The Analogous color harmony consists of three colors that are next to each other on the color wheel.



4292487589



4293726306



4292690207

Triad

The Triadic color harmony groups three colors that are evenly spaced from another and form a triangle on the color wheel.



4293726306



4280388864



4278226427

Complementary

The Complementary color scheme is a pair of colors which are on the opposite of each other on the color wheel.



4293726306



4279299483

Split Complementary

Split-complementary colors differ from the complementary color scheme. The scheme consists of three colors, the original color and two neighbors of the complement color.



4278228435



4293726306



4278227788

Square

The Square scheme is like the rectangle color scheme, but the four colors are evenly spaced on the color wheel.



4293726306



4286283520



4278228627



4278221311

Rectangle

The Rectangle color scheme consists of four colors that form a rectangle on the color wheel.



4293726306



4291058688



4278228627



4278227185

Sweetspot

The Sweet Spot groups the original color and five complimentary colors.



4293726306



4294949074



4288155885



4286600292



4278190080



4286611584

Same Dimension

The Same Dimension uses a secret algorithm to generate beautiful new colors.



4293726306



4294901855



4293732880



4285885038



4290052163



4281729044

Inverse Universe

The Inverse Universe completely reimagines the original color for something new.



4293726306



4294901855



4279292909



4285885038



4290052163



4281729044

Previews

White Background



This preview shows how the Android color 4293726306 looks on a white background.

Color Contrast Check

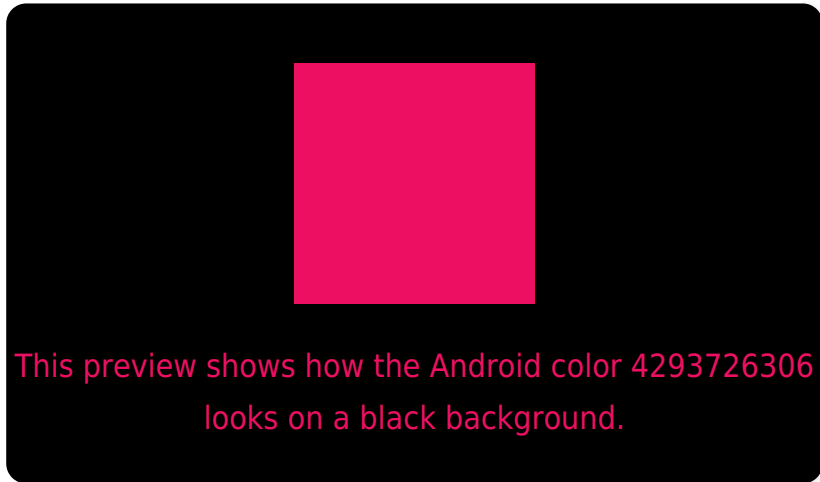
Large Text (above 18pt) WCAG AA ✓ Pass

Any Text WCAG AA ✗ Fail

Large Text (above 18pt) WCAG AAA ✗ Fail

Any Text WCAG AAA ✗ Fail

Black Background



Color Contrast Check

Large Text (above 18pt) WCAG AA ✓ Pass

Any Text WCAG AA ✓ Pass

Large Text (above 18pt) WCAG AAA ✓ Pass

Any Text WCAG AAA × Fail

If you want to check with other color combinations, try the [Color Contrast Checker](#).

Android 4293726306 Background



This preview shows how black text looks on a background with the Android color 4293726306.

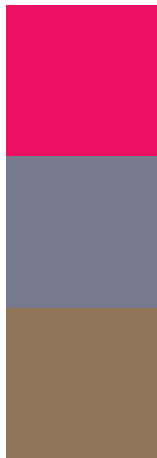


This preview shows how white text looks on a background with the Android color 4293726306.

Color Blindness Simulation

Color vision deficiency is a very complex topic, and I could not describe the different causes any better than Wikipedia does, so if you want to learn more, you should check out their [article about color blindness](#).

Dichromacy

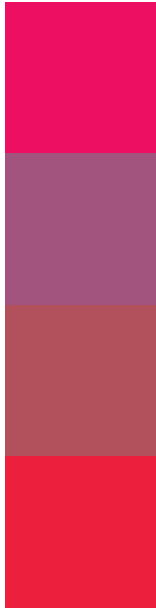


Original Color
4293726306

Protanopia
4286019982

Deuteranopia
4287722840

Trichromacy



Original Color
4293726306

Protanomaly
4288828286

Deuteranomaly
4289876060

Tritanomaly
4293664829

Monochromacy



Original Color
4293726306

Achromatopsia
4284177243

Achromatomaly
4287643742

CSS Examples

Text

The CSS property to change the color of the text to Android 4293726306 is called "color". The color property can be set on classes, ids or directly on the HTML element.

This example shows how text in the color `rgb(237, 16, 98)` looks like.

```
.text, #text, p{  
    color:rgb(237, 16, 98)  
}
```

If you want to add a text shadow in that color use the text-shadow property, you can generate a text shadow directly with our [CSS Text Shadow Generator](#).

Here you see how black text with a 4 pixel rgb(237, 16, 98) colored shadow looks like.

```
.shadow{ text-shadow: 4px 4px 2px rgb(237, 16, 98) }
```

Border

The CSS property to change the border of an element to Android 4293726306 is called "border". The border property can be set on classes, ids or directly on the HTML element.

This example shows the color as border, it can be applied via the CSS property "border" or "border-color".

```
.border, #border, table{ border:4px solid rgb(237, 16, 98) }
```

If only the border color should be changed use the property border-color.

```
.border{ border-color:rgb(237, 16, 98) }
```

If you want to add a box shadow in that color use:

Here you see how a box with a 4 pixel rgb(237, 16, 98) colored shadow looks like.

```
.boxshadow{ -moz-box-shadow:4px 4px 4px  
4px rgb(237, 16, 98); -webkit-box-  
shadow:4px 4px 4px 4px rgb(237, 16, 98);  
box-shadow:4px 4px 4px 4px rgb(237, 16,  
98) }
```

Background

The CSS property to change the background color of an element to Android 4293726306 is called "background". The background property can be set on classes, ids or directly on the HTML element.

```
.background, #background, body{  
background: rgb(237, 16, 98) }
```

If only the background color should be changed can be used:

```
.background{ background-color: rgb(237, 16,  
98) }
```

This example shows the color as background, it is applied via the CSS property "background".

To optimize and compress your CSS code, you can use our [online CSS compressor and optimizer](#) based on csstidy. If you want to create a linear or radial gradient as background or border, check our [CSS Gradient Generator](#).

Hey! You found this booklet interesting? Support Converting Colors with the new Membership Option!

The pro membership hides all ads, plus gives you double the colors in the color bucket, and more awesome pro features!

[Learn more, Memberships starting at \\$2.50/m!](#)

**Follow me
on Twitter!**

@ConvertingColor