

# Converting Colors

Android(4293726817)

Have a look what the booklet for  
Android(4293726817) contains.

<b>Android(4293726817)</b> .....	3
<i><b>Conversions</b></i> .....	4
<i><b>Details</b></i> .....	6
<i><b>Harmonies</b></i> .....	11
<i><b>Previews</b></i> .....	23
<i><b>Color Blindness Simulation</b></i> .....	26
<i><b>CSS Examples</b></i> .....	29

**Color**

**Android(4293726817)**

# Conversions

## Conversions Part 1

<b>Format</b>	<b>Color</b>
Hex	ED1261
RGB	237, 18, 97
RGB Percent	93%, 7%, 38%
CMY	0.0706, 0.9294, 0.6196
CMYK	0.00, 0.92, 0.59, 0.07
HSL	338°, 86%, 50%
HSV	338°, 92%, 93%
XYZ	37.2990, 19.3002, 13.0687
YIQ	92.4870, 105.1650, 70.9970

# Conversions

## Conversions Part 2

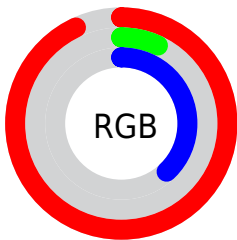
Format	Color
<a href="#">RYB</a>	<a href="#">237, 18, 97</a>
Decimal	<a href="#">15536737</a>
CIELab	<a href="#">51.04, 77.11, 16.92</a>
CIELCh	<a href="#">51, 78.948, 12.379</a>
Yxy	<a href="#">19.3002, 0.5354, 0.2770</a>
Android (android.graphics.Color)	<a href="#">4293726817 (0xFFED1261)</a>
YUV	<a href="#">92.4870, 2.2249, 126.7379</a>
Hunter-Lab	<a href="#">43.9320, 74.6686, 13.1151</a>

# Details

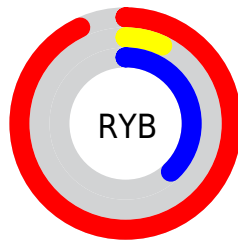
The Android color **4293726817** is a dark color, and the websafe version is hex **FF0066**. The color can be described as dark washed rose. A complement of this color would be **4279430558**, and the grayscale version is **4284243036**.

A 20% lighter version of the original color is **4294927251**, and **4289527859** is the 20% darker color. If you saturate the color by 10%, you get **4293722197**, and if you desaturate by 10%, it is **4293732976**.

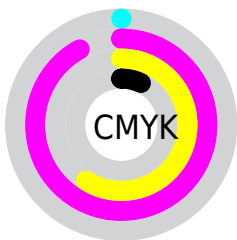
# Distribution



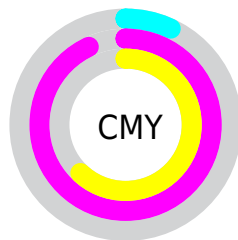
- Red (93%)
- Green (7%)
- Blue (38%)



- Red (93%)
- Yellow (7%)
- Blue (38%)



- Cyan (0%)
- Magenta (92%)
- Yellow (59%)
- Black (7%)



- Cyan (7%)
- Magenta (93%)
- Yellow (62%)

# Brightness & Saturation Gradients

These gradients show how the Android color 4293726817 changes by changing the brightness by 10 percent. The first figure shows a shift by +10% for each color and the second figure -10%.


Similar to the brightness gradients but the following saturation gradients show a change of the Android color 4293726817 by changing the saturation by 10% instead.



 4293726817

 4293726817

4294967295

 4291625034

 4294927251

 4289527859

 4294935214

 4287496223

 4294942921

 4285464583

 4294950629

 4283498500

 4294958335

 4281401346

 4294966015

 4278190080

 4293726817

 4293726817

 4293722197

 4293732976

 4293738879

 4293745038

 4293751198

 4293757101

 4293763260

 4293769419

 4293775578

 4293781481

# Harmonies

## Analogous

The Analogous color harmony consists of three colors that are next to each other on the color wheel.



4292552868



4293726817



4292624926

# Triad

The Triadic color harmony groups three colors that are evenly spaced from another and form a triangle on the color wheel.



4293726817



4280257792



4278226171

# Complementary

The Complementary color scheme is a pair of colors which are on the opposite of each other on the color wheel.



4293726817



4279430558

# Split Complementary

Split-complementary colors differ from the complementary color scheme. The scheme consists of three colors, the original color and two neighbors of the complement color.



4278228436



4293726817



4278228046

# Square

The Square scheme is like the rectangle color scheme, but the four colors are evenly spaced on the color wheel.



4293726817



4286218240



4278228629



4278221311

# Rectangle

The Rectangle color scheme consists of four colors that form a rectangle on the color wheel.



4293726817



4290993408



4278228629



4278227186



# Sweetspot

The Sweet Spot groups the original color and five complimentary colors.



4293726817



4294949073



4288484077



4286600292



4278190080



4286611584



# Same Dimension

The Same Dimension uses a secret algorithm to generate beautiful new colors.



4293726817



4294901852



4293734162



4285885038



4290052161



4281729043



# Inverse Universe

The Inverse Universe completely reimagines the original color for something new.



4293726817



4294901852



4279423213



4285885038



4290052161



4281729043



# Previews

## White Background



This preview shows how the Android color 4293726817 looks on a white background.

## Color Contrast Check

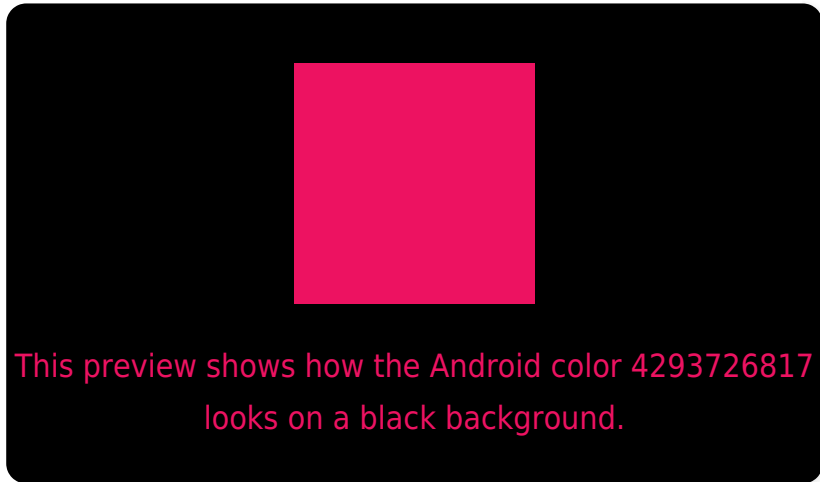
Large Text (above 18pt) WCAG AA ✓ Pass

Any Text WCAG AA ✗ Fail

Large Text (above 18pt) WCAG AAA ✗ Fail

Any Text WCAG AAA ✗ Fail

# Black Background



## Color Contrast Check

Large Text (above 18pt) WCAG AA ✓ Pass

Any Text WCAG AA ✓ Pass

Large Text (above 18pt) WCAG AAA ✓ Pass

Any Text WCAG AAA × Fail

If you want to check with other color combinations, try the [Color Contrast Checker](#).



# Android 4293726817 Background



This preview shows how black text looks on a background with the Android color 4293726817.



This preview shows how white text looks on a background with the Android color 4293726817.

# Color Blindness Simulation

Color vision deficiency is a very complex topic, and I could not describe the different causes any better than Wikipedia does, so if you want to learn more, you should check out their [article about color blindness](#).

## Dichromacy



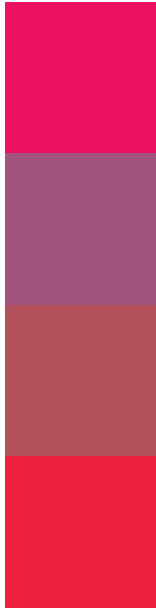
**Original Color**  
4293726817

**Protanopia**  
4286020236

**Deuteranopia**  
4287788375



# Trichromacy



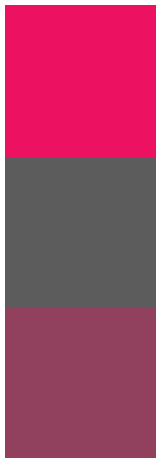
**Original Color**  
4293726817

**Protanomaly**  
4288828540

**Deuteranomaly**  
4289941851

**Tritanomaly**  
4293665085

# Monochromacy



**Original Color**  
4293726817

**Achromatopsia**  
4284243036

**Achromatomaly**  
4287709534

# CSS Examples

## Text

The CSS property to change the color of the text to Android 4293726817 is called "color". The color property can be set on classes, ids or directly on the HTML element.

This example shows how text in the color `rgb(237, 18, 97)` looks like.

```
.text, #text, p{  
    color:rgb(237, 18, 97)  
}
```

If you want to add a text shadow in that color use the text-shadow property, you can generate a text shadow directly with our [CSS Text Shadow Generator](#).

Here you see how black text with a 4 pixel rgb(237, 18, 97) colored shadow looks like.

```
.shadow{ text-shadow: 4px 4px 2px rgb(237, 18, 97) }
```

## Border

The CSS property to change the border of an element to Android 4293726817 is called "border". The border property can be set on classes, ids or directly on the HTML element.

This example shows the color as border, it can be applied via the CSS property "border" or "border-color".

```
.border, #border, table{ border:4px solid rgb(237, 18, 97) }
```

If only the border color should be changed use the property `border-color`.

```
.border{ border-color:rgb(237, 18, 97) }
```

If you want to add a box shadow in that color use:

Here you see how a box with a 4 pixel `rgb(237, 18, 97)` colored shadow looks like.

```
.boxshadow{ -moz-box-shadow:4px 4px 4px  
4px rgb(237, 18, 97); -webkit-box-  
shadow:4px 4px 4px 4px rgb(237, 18, 97);  
box-shadow:4px 4px 4px 4px rgb(237, 18,  
97) }
```

# Background

The CSS property to change the background color of an element to Android 4293726817 is called "background". The background property can be set on classes, ids or directly on the HTML element.

```
.background, #background, body{  
background: rgb(237, 18, 97) }
```

If only the background color should be changed can be used:

```
.background{ background-color: rgb(237, 18,  
97) }
```

This example shows the color as background, it is applied via the CSS property "background".

To optimize and compress your CSS code, you can use our [online CSS compressor and optimizer](#) based on csstidy. If you want to create a linear or radial gradient as background or border, check our [CSS Gradient Generator](#).



Hey! You found this booklet interesting? Support Converting Colors with the new Membership Option!

The pro membership hides all ads, plus gives you double the colors in the color bucket, and more awesome pro features!

**[Learn more, Memberships starting at \\$2.50/m!](#)**

**Follow me  
on Twitter!**

@ConvertingColor