

Converting Colors

Android(4293736308)

Have a look what the booklet for
Android(4293736308) contains.

Android(4293736308)	3
<i>Conversions</i>	4
<i>Details</i>	6
<i>Harmonies</i>	11
<i>Previews</i>	23
<i>Color Blindness Simulation</i>	26
<i>CSS Examples</i>	29

Color

Android(4293736308)

Conversions

Conversions Part 1

Format	Color
Hex	ED3774
RGB	237, 55, 116
RGB Percent	93%, 22%, 45%
CMY	0.0706, 0.7843, 0.5451
CMYK	0.00, 0.77, 0.51, 0.07
HSL	340°, 83%, 57%
HSV	340°, 77%, 93%
XYZ	39.4436, 21.9979, 18.6901
YIQ	116.3720, 88.8910, 57.5550

Conversions

Conversions Part 2

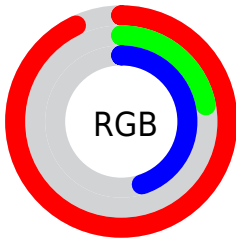
Format	Color
R_{YB}	237, 55, 116
Decimal	15546228
CIE _{Lab}	54.02, 71.12, 9.58
CIE _{LCh}	54, 71.761, 7.673
Yxy	21.9979, 0.4922, 0.2745
Android (android.graphics.Color)	4293736308 (0xFFED3774)
YUV	116.3720, -0.1834, 105.7908
Hunter-Lab	46.9019, 68.0370, 9.2046

Details

The Android color **4293736308** is a dark color, and the websafe version is hex **CC3366**. The color can be described as middle washed rose. A complement of this color would be **4281855408**, and the grayscale version is **4285822068**.

A 20% lighter version of the original color is **4294932136**, and **4289658948** is the 20% darker color. If you saturate the color by 10%, you get **4293730148**, and if you desaturate by 10%, it is **4293742468**.

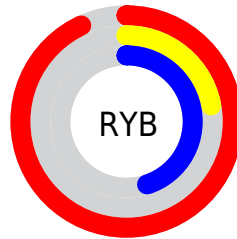
Distribution



Red (93%)

Green (22%)

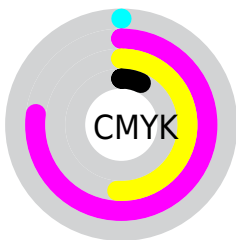
Blue (45%)



Red (93%)

Yellow (22%)

Blue (45%)

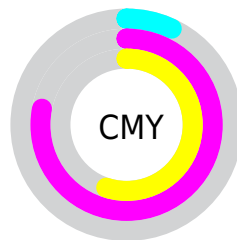


Cyan (0%)

Magenta (77%)

Yellow (51%)

Black (7%)



Cyan (7%)

Magenta (78%)

Yellow (55%)

Brightness & Saturation Gradients


These gradients show how the Android color 4293736308 changes by changing the brightness by 10 percent. The first figure shows a shift by +10% for each color and the second figure -10%.

Similar to the brightness gradients but the following saturation gradients show a change of the Android color 4293736308 by changing the saturation by 10% instead.

 4293736308

 4293736308

4294967295

 4291690844

 4294932136

 4289658948

 4294939587

 4287627311

 4294947295

 4285661211

 4294954747

 4283695106

 4294962431

 4281729026

 4278583296

 4278190080

 4293736308

 4293736308

 4293730148

 4293742468

 4293724244

 4293748372

 4293722191

 4293754531

 4293760691

 4293766851

 4293772755

 4293778914

 4293785074

 4293787647

Harmonies

Analogous

The Analogous color harmony consists of three colors that are next to each other on the color wheel.



4292233138



4293736308



4293086776

Triad

The Triadic color harmony groups three colors that are evenly spaced from another and form a triangle on the color wheel.



4293736308



4283011584



4278228212

Complementary

The Complementary color scheme is a pair of colors which are on the opposite of each other on the color wheel.



4293736308



4281855408

Split Complementary

Split-complementary colors differ from the complementary color scheme. The scheme consists of three colors, the original color and two neighbors of the complement color.



4278229964



4293736308



4278229583

Square

The Square scheme is like the rectangle color scheme, but the four colors are evenly spaced on the color wheel.



4293736308



4287529984



4278230160



4278224125

Rectangle

The Rectangle color scheme consists of four colors that form a rectangle on the color wheel.



4293736308



4291715850



4278230160



4278228970

Sweetspot

The Sweet Spot groups the original color and five complimentary colors.



4293736308



4294952152



4289542125



4286602344



4278190080



4286611584

Same Dimension

The Same Dimension uses a secret algorithm to generate beautiful new colors.



4293736308



4294906979



4293743159



4285885038



4290052157



4281729042

Inverse Universe

The Inverse Universe completely reimagines the original color for something new.



4293736308



4294906979



4281848557



4285885038



4290052157



4281729042

Previews

White Background



This preview shows how the Android color 4293736308 looks on a white background.

Color Contrast Check

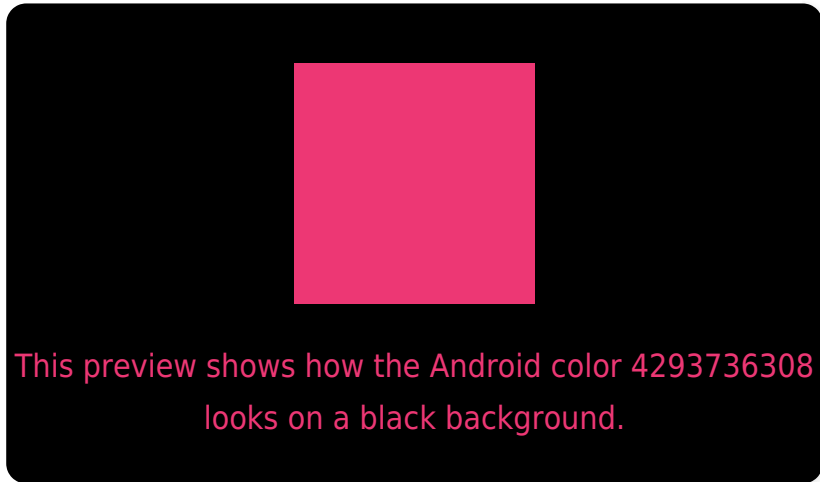
Large Text (above 18pt) WCAG AA ✓ Pass

Any Text WCAG AA ✗ Fail

Large Text (above 18pt) WCAG AAA ✗ Fail

Any Text WCAG AAA ✗ Fail

Black Background



Color Contrast Check

Large Text (above 18pt) WCAG AA ✓ Pass

Any Text WCAG AA ✓ Pass

Large Text (above 18pt) WCAG AAA ✓ Pass

Any Text WCAG AAA × Fail

If you want to check with other color combinations, try the [Color Contrast Checker](#).

Android 4293736308 Background



This preview shows how black text looks on a background with the Android color 4293736308.



This preview shows how white text looks on a background with the Android color 4293736308.

Color Blindness Simulation

Color vision deficiency is a very complex topic, and I could not describe the different causes any better than Wikipedia does, so if you want to learn more, you should check out their [article about color blindness](#).

Dichromacy

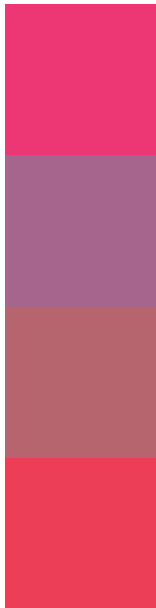


Original Color
4293736308

Protanopia
4286349467

Deuteranopia
4288052587

Trichromacy



Original Color
4293736308

Protanomaly
4289029517

Deuteranomaly
4290143342

Tritanomaly
4293672791

Monochromacy



Original Color
4293736308

Achromatopsia
4285822068

Achromatomaly
4288700020

CSS Examples

Text

The CSS property to change the color of the text to Android 4293736308 is called "color". The color property can be set on classes, ids or directly on the HTML element.

This example shows how text in the color `rgb(237, 55, 116)` looks like.

```
.text, #text, p{  
    color:rgb(237, 55, 116)  
}
```

If you want to add a text shadow in that color use the text-shadow property, you can generate a text shadow directly with our [CSS Text Shadow Generator](#).

Here you see how black text with a 4 pixel rgb(237, 55, 116) colored shadow looks like.

```
.shadow{ text-shadow: 4px 4px 2px rgb(237, 55, 116) }
```

Border

The CSS property to change the border of an element to Android 4293736308 is called "border". The border property can be set on classes, ids or directly on the HTML element.

This example shows the color as border, it can be applied via the CSS property "border" or "border-color".

```
.border, #border, table{ border:4px solid rgb(237, 55, 116) }
```

If only the border color should be changed use the property border-color.

```
.border{ border-color:rgb(237, 55, 116) }
```

If you want to add a box shadow in that color use:

Here you see how a box with a 4 pixel rgb(237, 55, 116) colored shadow looks like.

```
.boxshadow{ -moz-box-shadow:4px 4px 4px  
4px rgb(237, 55, 116); -webkit-box-  
shadow:4px 4px 4px 4px rgb(237, 55, 116);  
box-shadow:4px 4px 4px 4px rgb(237, 55,  
116) }
```

Background

The CSS property to change the background color of an element to Android 4293736308 is called "background". The background property can be set on classes, ids or directly on the HTML element.

```
.background, #background, body{  
background: rgb(237, 55, 116) }
```

If only the background color should be changed can be used:

```
.background{ background-color: rgb(237, 55,  
116) }
```

This example shows the color as background, it is applied via the CSS property "background".

To optimize and compress your CSS code, you can use our [online CSS compressor and optimizer](#) based on csstidy. If you want to create a linear or radial gradient as background or border, check our [CSS Gradient Generator](#).

Hey! You found this booklet interesting? Support Converting Colors with the new Membership Option!

The pro membership hides all ads, plus gives you double the colors in the color bucket, and more awesome pro features!

[Learn more, Memberships starting at \\$2.50/m!](#)

**Follow me
on Twitter!**

@ConvertingColor