

# Converting Colors

Android(4293745810)

Have a look what the booklet for  
Android(4293745810) contains.

<b>Android(4293745810)</b> .....	3
<i><b>Conversions</b></i> .....	4
<i><b>Details</b></i> .....	6
<i><b>Harmonies</b></i> .....	11
<i><b>Previews</b></i> .....	23
<i><b>Color Blindness Simulation</b></i> .....	26
<i><b>CSS Examples</b></i> .....	29

# **Color**

**Android(4293745810)**

# Conversions

## Conversions Part 1

Format	Color
Hex	ED5C92
RGB	237, 92, 146
RGB Percent	93%, 36%, 57%
CMY	0.0706, 0.6392, 0.4275
CMYK	0.00, 0.61, 0.38, 0.07
HSL	338°, 80%, 65%
HSV	338°, 61%, 93%
XYZ	43.9405, 27.7341, 30.2314
YIQ	141.5110, 69.0860, 47.5340

# Conversions

## Conversions Part 2

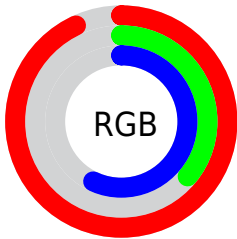
Format	Color
R <sub>Y</sub> B	237, 92, 146
Decimal	15555730
CIE Lab	59.65, 60.55, -0.05
CIE LCh	60, 60.547, 359.954
Yxy	27.7341, 0.4312, 0.2722
Android (android.graphics.Color)	4293745810 (0xFFED5C92)
YUV	141.5110, 2.2131, 83.7439
Hunter-Lab	52.6632, 56.7741, 2.8287

# Details

The Android color **4293745810** is a light color, and the websafe version is hex **FF6699**. The color can be described as light muted rose. A complement of this color would be **4284280247**, and the grayscale version is **4287466893**.

A 20% lighter version of the original color is **4294939848**, and **4289797472** is the 20% darker color. If you saturate the color by 10%, you get **4293739651**, and if you desaturate by 10%, it is **4293751969**.

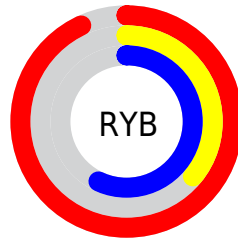
# Distribution



Red (93%)

Green (36%)

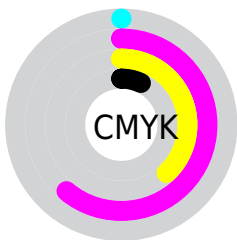
Blue (57%)



Red (93%)

Yellow (36%)

Blue (57%)

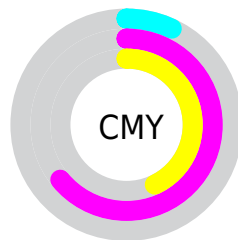


Cyan (0%)

Magenta (61%)

Yellow (38%)

Black (7%)



Cyan (7%)

Magenta (64%)

Yellow (43%)

# Brightness & Saturation Gradients

These gradients show how the Android color 4293745810 changes by changing the brightness by 10 percent. The first figure shows a shift by +10% for each color and the second figure -10%.

Similar to the brightness gradients but the following saturation gradients show a change of the Android color 4293745810 by changing the saturation by 10% instead.



 4293745810

 4293745810

4294967295

 4291772280

 4294939848

 4289797472

 4294947300

 4287823944

 4294954751

 4285923378

 4294962175

 4284022813

 4282384387

 4280090625

 4278190080

 4293745810

 4293745810

 4293739651

 4293751969

 4293733748

 4293757872

 4293727589

 4293764031

 4293722200

 4293770189

 4293776348

 4293782251

 4293787642

 4293787647

# Harmonies

## Analogous

The Analogous color harmony consists of three colors that are next to each other on the color wheel.



4291848902



4293745810



4293682270

# Triad

The Triadic color harmony groups three colors that are evenly spaced from another and form a triangle on the color wheel.



4293745810



4285897769



4278232043

# Complementary

The Complementary color scheme is a pair of colors which are on the opposite of each other on the color wheel.



4293745810



4284280247

# Split Complementary

Split-complementary colors differ from the complementary color scheme. The scheme consists of three colors, the original color and two neighbors of the complement color.



4278233283



4293745810



4279936344

# Square

The Square scheme is like the rectangle color scheme, but the four colors are evenly spaced on the color wheel.



4293745810



4289432852



4278233486



4278228730

# Rectangle

The Rectangle color scheme consists of four colors that form a rectangle on the color wheel.



4293745810



4292768063



4278233486



4278232544



# Sweetspot

The Sweet Spot groups the original color and five complimentary colors.



4293745810



4294955490



4290075885



4286604142



4278190080



4286611584



# Same Dimension

The Same Dimension uses a secret algorithm to generate beautiful new colors.



4293745810



4294919562



4293750108



4285885038



4290052163



4281729044



# Inverse Universe

The Inverse Universe completely reimagines the original color for something new.



4293745810



4294919562



4284275949



4285885038



4290052163



4281729044



# Previews

## White Background



This preview shows how the Android color 4293745810 looks on a white background.

## Color Contrast Check

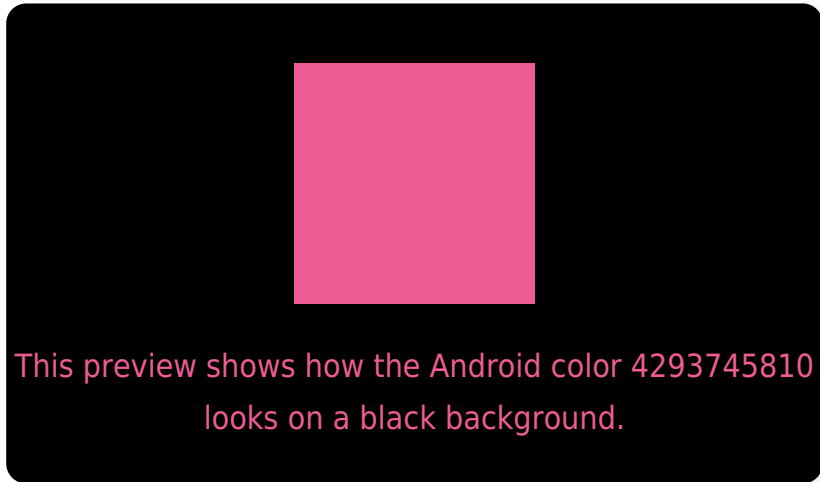
Large Text (above 18pt) WCAG AA ✓ Pass

Any Text WCAG AA ✗ Fail

Large Text (above 18pt) WCAG AAA ✗ Fail

Any Text WCAG AAA ✗ Fail

# Black Background



## Color Contrast Check

Large Text (above 18pt) WCAG AA ✓ Pass

Any Text WCAG AA ✓ Pass

Large Text (above 18pt) WCAG AAA ✓ Pass

Any Text WCAG AAA × Fail

If you want to check with other color combinations, try the [Color Contrast Checker](#).



# Android 4293745810 Background



This preview shows how black text looks on a background with the Android color 4293745810.



This preview shows how white text looks on a background with the Android color 4293745810.

# Color Blindness Simulation

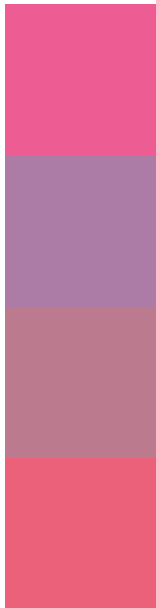
Color vision deficiency is a very complex topic, and I could not describe the different causes any better than Wikipedia does, so if you want to learn more, you should check out their [article about color blindness](#).

## Dichromacy





# Trichromacy



**Original Color**  
4293745810

**Protanomaly**  
4289559718

**Deuteranomaly**  
4290542222

**Tritanomaly**  
4293615993

# Monochromacy



**Original Color**  
4293745810

**Achromatopsia**  
4287532686

**Achromatomaly**  
4289821839

# CSS Examples

## Text

The CSS property to change the color of the text to Android 4293745810 is called "color". The color property can be set on classes, ids or directly on the HTML element.

This example shows how text in the color `rgb(237, 92, 146)` looks like.

```
.text, #text, p{  
    color:rgb(237, 92, 146)  
}
```

If you want to add a text shadow in that color use the text-shadow property, you can generate a text shadow directly with our [CSS Text Shadow Generator](#).

Here you see how black text with a 4 pixel rgb(237, 92, 146) colored shadow looks like.

```
.shadow{ text-shadow: 4px 4px 2px rgb(237, 92, 146) }
```

## Border

The CSS property to change the border of an element to Android 4293745810 is called "border". The border property can be set on classes, ids or directly on the HTML element.

This example shows the color as border, it can be applied via the CSS property "border" or "border-color".

```
.border, #border, table{ border:4px solid rgb(237, 92, 146) }
```

If only the border color should be changed use the property border-color.

```
.border{ border-color:rgb(237, 92, 146) }
```

If you want to add a box shadow in that color use:

Here you see how a box with a 4 pixel rgb(237, 92, 146) colored shadow looks like.

```
.boxshadow{ -moz-box-shadow:4px 4px 4px  
4px rgb(237, 92, 146); -webkit-box-  
shadow:4px 4px 4px 4px rgb(237, 92, 146);  
box-shadow:4px 4px 4px 4px rgb(237, 92,  
146) }
```

# Background

The CSS property to change the background color of an element to Android 4293745810 is called "background". The background property can be set on classes, ids or directly on the HTML element.

```
.background, #background, body{  
background: rgb(237, 92, 146) }
```

If only the background color should be changed can be used:

```
.background{ background-color: rgb(237, 92,  
146) }
```

This example shows the color as background, it is applied via the CSS property "background".

To optimize and compress your CSS code, you can use our [online CSS compressor and optimizer](#) based on csstidy. If you want to create a linear or radial gradient as background or border, check our [CSS Gradient Generator](#).



Hey! You found this booklet interesting? Support Converting Colors with the new Membership Option!

The pro membership hides all ads, plus gives you double the colors in the color bucket, and more awesome pro features!

**[Learn more, Memberships starting at \\$2.50/m!](#)**

**Follow me  
on Twitter!**

@ConvertingColor