

Converting Colors

Android(4293748347)

Have a look what the booklet for
Android(4293748347) contains.

Android(4293748347)	3
<i>Conversions</i>	4
<i>Details</i>	6
<i>Harmonies</i>	11
<i>Previews</i>	23
<i>Color Blindness Simulation</i>	26
<i>CSS Examples</i>	29

Color

Android(4293748347)

Conversions

Conversions Part 1

Format	Color
Hex	ED667B
RGB	237, 102, 123
RGB Percent	93%, 40%, 48%
CMY	0.0706, 0.6000, 0.5176
CMYK	0.00, 0.57, 0.48, 0.07
HSL	351°, 79%, 66%
HSV	351°, 57%, 93%
XYZ	43.2516, 28.9373, 22.0447
YIQ	144.7590, 73.7190, 35.1510

Conversions

Conversions Part 2

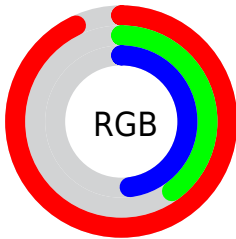
Format	Color
R _{YB}	237, 102, 123
Decimal	15558267
CIE Lab	60.73, 53.87, 14.85
CIE LCh	61, 55.876, 15.410
Yxy	28.9373, 0.4590, 0.3071
Android (android.graphics.Color)	4293748347 (0xFFED667B)
YUV	144.7590, -10.7272, 80.8954
Hunter-Lab	53.7934, 49.3810, 13.3581

Details

The Android color `4293748347` is a light color, and the websafe version is hex `CC6666`. A complement of this color would be `4284935640`, and the grayscale version is `4287730065`.

A 20% lighter version of the original color is `4294942127`, and `4289736267` is the 20% darker color. If you saturate the color by 10%, you get `4293742183`, and if you desaturate by 10%, it is `4293754511`.

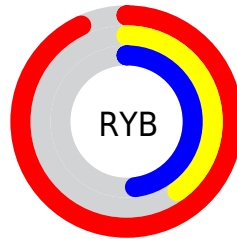
Distribution



Red (93%)

Green (40%)

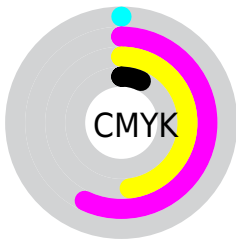
Blue (48%)



Red (93%)

Yellow (40%)

Blue (48%)

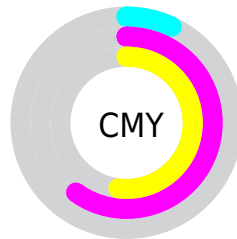


Cyan (0%)

Magenta (57%)

Yellow (48%)

Black (7%)



Cyan (7%)

Magenta (60%)

Yellow (52%)

Brightness & Saturation Gradients

These gradients show how the Android color 4293748347 changes by changing the brightness by 10 percent. The first figure shows a shift by +10% for each color and the second figure -10%.

Similar to the brightness gradients but the following saturation gradients show a change of the Android color 4293748347 by changing the saturation by 10% instead.



4293748347



4293748347

4294967295



4291709538



4294942127



4289736267



4294949579



4287825204



4294956775



4285857823



4294964479



4284022791



4282253314



4279959553



4278190080



4293748347



4293748347

 4293742183

 4293754511

 4293736275

 4293760419

 4293730111

 4293766583

 4293723947

 4293772747

 4293722149

 4293778655

 4293784819

 4293787647

Harmonies

Analogous

The Analogous color harmony consists of three colors that are next to each other on the color wheel.



4292897197



4293748347



4292899918

Triad

The Triadic color harmony groups three colors that are evenly spaced from another and form a triangle on the color wheel.



4293748347



4284261193



4278231026

Complementary

The Complementary color scheme is a pair of colors which are on the opposite of each other on the color wheel.



4293748347



4284935640

Split Complementary

Split-complementary colors differ from the complementary color scheme. The scheme consists of three colors, the original color and two neighbors of the complement color.



4278233304



4293748347



4278233464

Square

The Square scheme is like the rectangle color scheme, but the four colors are evenly spaced on the color wheel.



4293748347



4287993899



4278233771



4284911602

Rectangle

The Rectangle color scheme consists of four colors that form a rectangle on the color wheel.



4293748347



4291658039



4278233771



4278231788

Sweetspot

The Sweet Spot groups the original color and five complimentary colors.



4293748347



4294956250



4292306669



4286604906



4278190080



4286611584

Same Dimension

The Same Dimension uses a secret algorithm to generate beautiful new colors.



4293748347



4294922861



4293759846



4285885035



4290052124



4281729032

Inverse Universe

The Inverse Universe completely reimagines the original color for something new.



4293748347



4294922861



4284924141



4285885035



4290052124



4281729032

Previews

White Background



This preview shows how the Android color 4293748347 looks on a white background.

Color Contrast Check

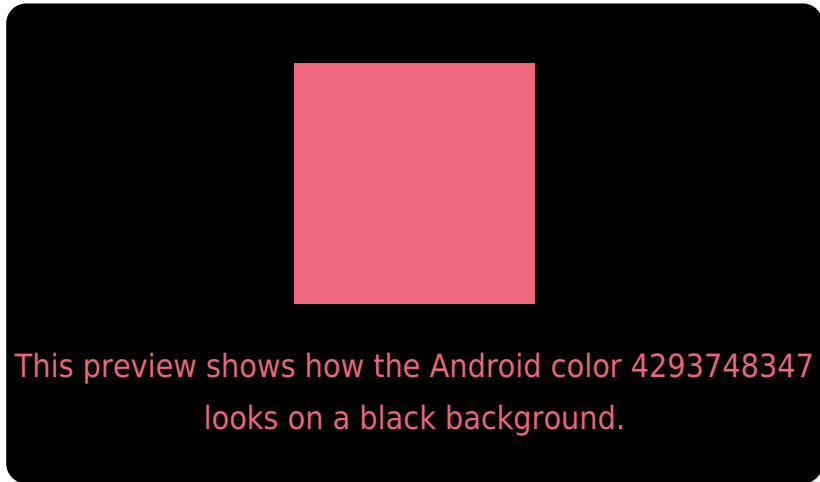
Large Text (above 18pt) WCAG AA ✓ Pass

Any Text WCAG AA ✗ Fail

Large Text (above 18pt) WCAG AAA ✗ Fail

Any Text WCAG AAA ✗ Fail

Black Background



Color Contrast Check

Large Text (above 18pt) WCAG AA ✓ Pass

Any Text WCAG AA ✓ Pass

Large Text (above 18pt) WCAG AAA ✓ Pass

Any Text WCAG AAA × Fail

If you want to check with other color combinations, try the [Color Contrast Checker](#).

Android 4293748347 Background



This preview shows how black text looks on a background with the Android color 4293748347.

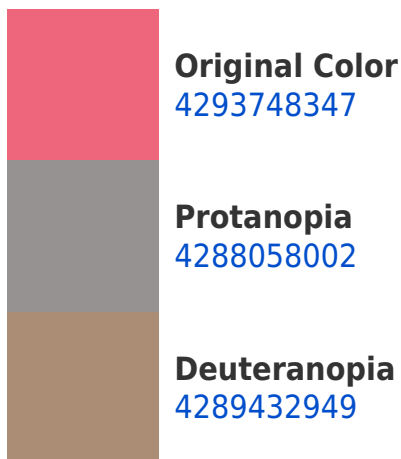



This preview shows how white text looks on a background with the Android color 4293748347.

Color Blindness Simulation

Color vision deficiency is a very complex topic, and I could not describe the different causes any better than Wikipedia does, so if you want to learn more, you should check out their [article about color blindness](#).

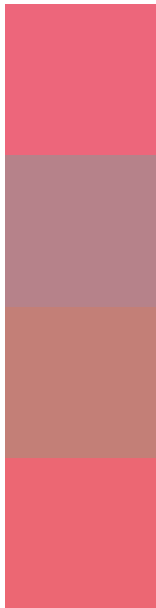
Dichromacy





Tritanopia
4293683311

Trichromacy



Original Color
4293748347

Protanomaly
4290151050

Deuteranomaly
4291002231

Tritanomaly
4293683059

Monochromacy



Original Color
4293748347

Achromatopsia
4287730065

Achromatomaly
4289888649

CSS Examples

Text

The CSS property to change the color of the text to Android 4293748347 is called "color". The color property can be set on classes, ids or directly on the HTML element.

This example shows how text in the color `rgb(237, 102, 123)` looks like.

```
.text, #text, p{  
    color:rgb(237, 102, 123)  
}
```

If you want to add a text shadow in that color use the text-shadow property, you can generate a text shadow directly with our [CSS Text Shadow Generator](#).

Here you see how black text with a 4 pixel rgb(237, 102, 123) colored shadow looks like.

```
.shadow{ text-shadow: 4px 4px 2px rgb(237, 102, 123) }
```

Border

The CSS property to change the border of an element to Android 4293748347 is called "border". The border property can be set on classes, ids or directly on the HTML element.

This example shows the color as border, it can be applied via the CSS property "border" or "border-color".

```
.border, #border, table{ border:4px solid rgb(237, 102, 123) }
```

If only the border color should be changed use the property `border-color`.

```
.border{ border-color:rgb(237, 102, 123) }
```

If you want to add a box shadow in that color use:

Here you see how a box with a 4 pixel `rgb(237, 102, 123)` colored shadow looks like.

```
.boxshadow{ -moz-box-shadow:4px 4px 4px  
4px rgb(237, 102, 123); -webkit-box-  
shadow:4px 4px 4px 4px rgb(237, 102, 123);  
box-shadow:4px 4px 4px 4px rgb(237, 102,  
123) }
```

Background

The CSS property to change the background color of an element to Android 4293748347 is called "background". The background property can be set on classes, ids or directly on the HTML element.

```
.background, #background, body{  
background: rgb(237, 102, 123) }
```

If only the background color should be changed can be used:

```
.background{ background-color: rgb(237,  
102, 123) }
```

This example shows the color as background, it is applied via the CSS property "background".

To optimize and compress your CSS code, you can use our [online CSS compressor and optimizer](#) based on csstidy. If you want to create a linear or radial gradient as background or border, check our [CSS Gradient Generator](#).

Hey! You found this booklet interesting? Support Converting Colors with the new Membership Option!

The pro membership hides all ads, plus gives you double the colors in the color bucket, and more awesome pro features!

[Learn more, Memberships starting at \\$2.50/m!](#)

**Follow me
on Twitter!**

@ConvertingColor