

Converting Colors

Android(4293754270)

Have a look what the booklet for
Android(4293754270) contains.

Android(4293754270)	3
<i>Conversions</i>	4
<i>Details</i>	6
<i>Harmonies</i>	11
<i>Previews</i>	23
<i>Color Blindness Simulation</i>	26
<i>CSS Examples</i>	29

Color

Android(4293754270)

Conversions

Conversions Part 1

Format	Color
Hex	ED7D9E
RGB	237, 125, 158
RGB Percent	93%, 49%, 62%
CMY	0.0706, 0.5098, 0.3804
CMYK	0.00, 0.47, 0.33, 0.07
HSL	342°, 76%, 71%
HSV	342°, 47%, 93%
XYZ	48.4302, 35.1404, 36.5780
YIQ	162.2500, 56.1590, 34.0070

Conversions

Conversions Part 2

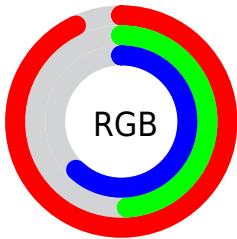
Format	Color
R_{YB}	237, 125, 158
Decimal	15564190
CIE _{Lab}	65.86, 46.52, 2.10
CIE _{LCh}	66, 46.570, 2.586
Yxy	35.1404, 0.4031, 0.2925
Android (android.graphics.Color)	4293754270 (0xFFED7D9E)
YUV	162.2500, -2.0953, 65.5558
Hunter-Lab	59.2793, 42.0927, 4.9110

Details

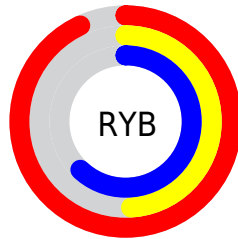
The Android color **4293754270** is a light color, and the websafe version is hex **CC6699**. A complement of this color would be **4286442956**, and the grayscale version is **4288848546**.

A 20% lighter version of the original color is **4294948053**, and **4289874027** is the 20% darker color. If you saturate the color by 10%, you get **4293748109**, and if you desaturate by 10%, it is **4293760431**.

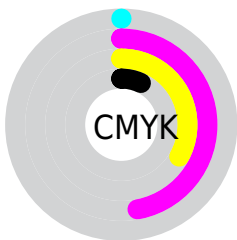
Distribution



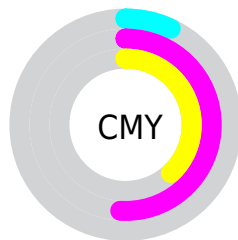
- Red (93%)
- Green (49%)
- Blue (62%)



- Red (93%)
- Yellow (49%)
- Blue (62%)



- Cyan (0%)
- Magenta (47%)
- Yellow (33%)
- Black (7%)



- Cyan (7%)
- Magenta (51%)
- Yellow (38%)

Brightness & Saturation Gradients

These gradients show how the Android color 4293754270 changes by changing the brightness by 10 percent. The first figure shows a shift by +10% for each color and the second figure -10%.

Similar to the brightness gradients but the following saturation gradients show a change of the Android color 4293754270 by changing the saturation by 10% instead.

 4293754270

 4293754270

4294967295

 4291781252

 4294948053

 4289874027

 4294955249

 4287966547

 4294962687

 4286123324

 4284350502

 4282581009

 4280942593

 4278190080

 4293754270

 4293754270

 4293748109

 4293760431

 4293742205

 4293766335

 4293736044

 4293772496

 4293729883

 4293778657

 4293723722

 4293784562

 4293722182

 4293787647

Harmonies

Analogous

The Analogous color harmony consists of three colors that are next to each other on the color wheel.



4292314311



4293754270



4293689973

Triad

The Triadic color harmony groups three colors that are evenly spaced from another and form a triangle on the color wheel.



4293754270



4287277911



4278234857

Complementary

The Complementary color scheme is a pair of colors which are on the opposite of each other on the color wheel.



4293754270



4286442956

Split Complementary

Split-complementary colors differ from the complementary color scheme. The scheme consists of three colors, the original color and two neighbors of the complement color.



4278236364



4293754270



4283740792

Square

The Square scheme is like the rectangle color scheme, but the four colors are evenly spaced on the color wheel.



4293754270



4290158410



4278236578



4284457971

Rectangle

The Rectangle color scheme consists of four colors that form a rectangle on the color wheel.



4293754270



4292905823



4278236578



4278235617

Sweetspot

The Sweet Spot groups the original color and five complimentary colors.



4293754270



4294958054



4291526125



4286605936



4278190080



4286611584

Same Dimension

The Same Dimension uses a secret algorithm to generate beautiful new colors.



4293754270



4294930072



4293759869



4285885037



4290052149



4281729040

Inverse Universe

The Inverse Universe completely reimagines the original color for something new.



4293754270



4294930072



4286437357



4285885037



4290052149



4281729040

Previews

White Background



This preview shows how the Android color 4293754270 looks on a white background.

Color Contrast Check

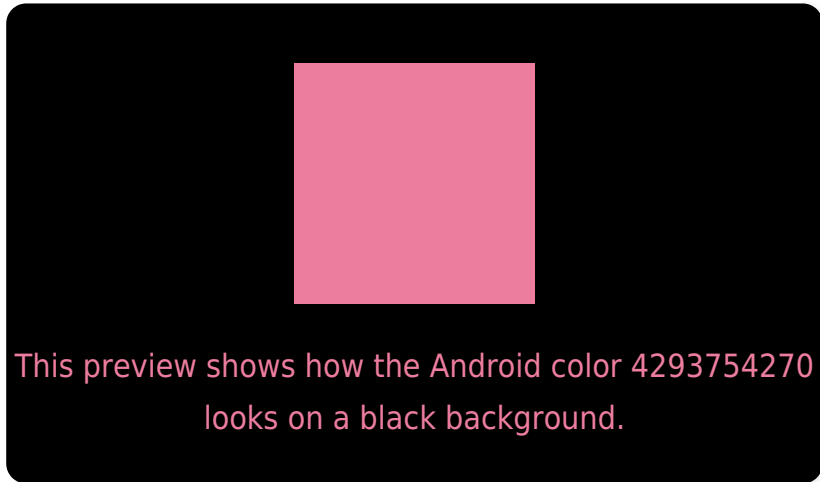
Large Text (above 18pt) WCAG AA × Fail

Any Text WCAG AA × Fail

Large Text (above 18pt) WCAG AAA × Fail

Any Text WCAG AAA × Fail

Black Background



Color Contrast Check

Large Text (above 18pt) WCAG AA ✓ Pass

Any Text WCAG AA ✓ Pass

Large Text (above 18pt) WCAG AAA ✓ Pass

Any Text WCAG AAA ✓ Pass

If you want to check with other color combinations, try the [Color Contrast Checker](#).

Android 4293754270 Background



This preview shows how black text looks on a background with the Android color 4293754270.



This preview shows how white text looks on a background with the Android color 4293754270.

Color Blindness Simulation

Color vision deficiency is a very complex topic, and I could not describe the different causes any better than Wikipedia does, so if you want to learn more, you should check out their [article about color blindness](#).

Dichromacy

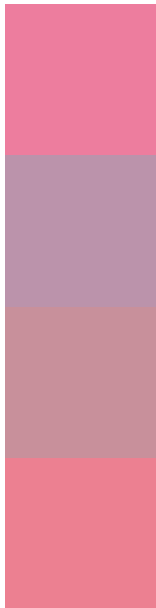


Original Color
4293754270

Protanopia
4288585650

Deuteranopia
4289960857

Trichromacy



Original Color
4293754270

Protanomaly
4290483115

Deuteranomaly
4291334299

Tritanomaly
4293689489

Monochromacy



Original Color
4293754270

Achromatopsia
4288848546

Achromatomaly
4290614689

CSS Examples

Text

The CSS property to change the color of the text to Android 4293754270 is called "color". The color property can be set on classes, ids or directly on the HTML element.

This example shows how text in the color `rgb(237, 125, 158)` looks like.

```
.text, #text, p{  
    color:rgb(237, 125, 158)  
}
```

If you want to add a text shadow in that color use the text-shadow property, you can generate a text shadow directly with our [CSS Text Shadow Generator](#).

Here you see how black text with a 4 pixel rgb(237, 125, 158) colored shadow looks like.

```
.shadow{ text-shadow: 4px 4px 2px rgb(237, 125, 158) }
```

Border

The CSS property to change the border of an element to Android 4293754270 is called "border". The border property can be set on classes, ids or directly on the HTML element.

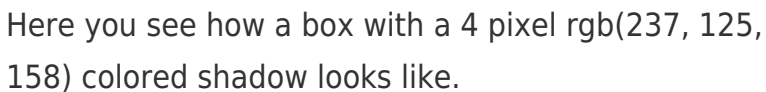
This example shows the color as border, it can be applied via the CSS property "border" or "border-color".

```
.border, #border, table{ border:4px solid rgb(237, 125, 158) }
```

If only the border color should be changed use the property `border-color`.

```
.border{ border-color:rgb(237, 125, 158) }
```

If you want to add a box shadow in that color use:



Here you see how a box with a 4 pixel `rgb(237, 125, 158)` colored shadow looks like.

```
.boxshadow{ -moz-box-shadow:4px 4px 4px 4px rgb(237, 125, 158); -webkit-box-shadow:4px 4px 4px 4px rgb(237, 125, 158); box-shadow:4px 4px 4px 4px rgb(237, 125, 158) }
```

Background

The CSS property to change the background color of an element to Android 4293754270 is called "background". The background property can be set on classes, ids or directly on the HTML element.

```
.background, #background, body{  
background: rgb(237, 125, 158) }
```

If only the background color should be changed can be used:

```
.background{ background-color: rgb(237,  
125, 158) }
```

This example shows the color as background, it is applied via the CSS property "background".

To optimize and compress your CSS code, you can use our [online CSS compressor and optimizer](#) based on csstidy. If you want to create a linear or radial gradient as background or border, check our [CSS Gradient Generator](#).

Hey! You found this booklet interesting? Support Converting Colors with the new Membership Option!

The pro membership hides all ads, plus gives you double the colors in the color bucket, and more awesome pro features!

[Learn more, Memberships starting at \\$2.50/m!](#)

**Follow me
on Twitter!**

@ConvertingColor