

Converting Colors

Android(4293756310)

Have a look what the booklet for
Android(4293756310) contains.

Android(4293756310)	3
<i>Conversions</i>	4
<i>Details</i>	6
<i>Harmonies</i>	11
<i>Previews</i>	23
<i>Color Blindness Simulation</i>	26
<i>CSS Examples</i>	29

Color

Android(4293756310)

Conversions

Conversions Part 1

Format	Color
Hex	ED8596
RGB	237, 133, 150
RGB Percent	93%, 52%, 59%
CMY	0.0706, 0.4784, 0.4118
CMYK	0.00, 0.44, 0.37, 0.07
HSL	350°, 74%, 73%
HSV	350°, 44%, 93%
XYZ	48.8176, 36.9816, 33.4194
YIQ	166.0340, 56.5270, 27.3350

Conversions

Conversions Part 2

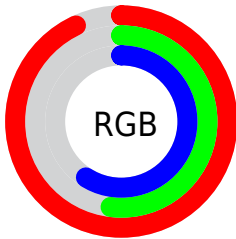
Format	Color
R_{YB}	237, 133, 150
Decimal	15566230
CIE _{Lab}	67.26, 41.53, 8.65
CIE _{LCh}	67, 42.418, 11.763
Yxy	36.9816, 0.4095, 0.3102
Android (android.graphics.Color)	4293756310 (0xFFED8596)
YUV	166.0340, -7.9048, 62.2372
Hunter-Lab	60.8125, 36.8701, 9.9861

Details

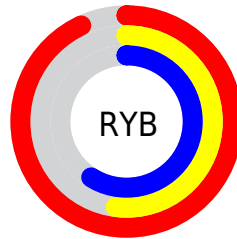
The Android color `4293756310` is a light color, and the websafe version is hex `FF9999`. A complement of this color would be `4286967260`, and the grayscale version is `4289111718`.

A 20% lighter version of the original color is `4294950092`, and `4289876323` is the 20% darker color. If you saturate the color by 10%, you get `4293750146`, and if you desaturate by 10%, it is `4293762474`.

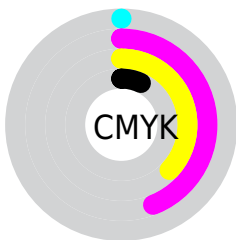
Distribution



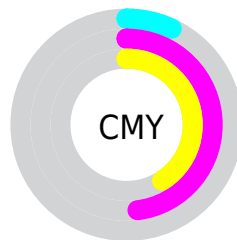
- Red (93%)
- Green (52%)
- Blue (59%)



- Red (93%)
- Yellow (52%)
- Blue (59%)



- Cyan (0%)
- Magenta (44%)
- Yellow (37%)
- Black (7%)



- Cyan (7%)
- Magenta (48%)
- Yellow (41%)

Brightness & Saturation Gradients

These gradients show how the Android color 4293756310 changes by changing the brightness by 10 percent. The first figure shows a shift by +10% for each color and the second figure -10%.

Similar to the brightness gradients but the following saturation gradients show a change of the Android color 4293756310 by changing the saturation by 10% instead.

 4293756310

 4293756310

4294967295

 4291783548

 4294950092

 4289876323

 4294957288

 4288034636

 4294964735

 4286127157

 4284350496

 4282581000

 4280942593

 4278190080

 4293756310

 4293756310

 4293750146

 4293762474

 4293744238

 4293768382

 4293738075

 4293774545

 4293731911

 4293780709

 4293726003

 4293786617

 4293722151

 4293787647

Harmonies

Analogous

The Analogous color harmony consists of three colors that are next to each other on the color wheel.



4292839613



4293756310



4293299315

Triad

The Triadic color harmony groups three colors that are evenly spaced from another and form a triangle on the color wheel.



4293756310



4286820457



4281249516

Complementary

The Complementary color scheme is a pair of colors which are on the opposite of each other on the color wheel.



4293756310



4286967260

Split Complementary

Split-complementary colors differ from the complementary color scheme. The scheme consists of three colors, the original color and two neighbors of the complement color.



4278236630



4293756310



4283414155

Square

The Square scheme is like the rectangle color scheme, but the four colors are evenly spaced on the color wheel.



4293756310



4289570391



4278237362



4286751470

Rectangle

The Rectangle color scheme consists of four colors that form a rectangle on the color wheel.



4293756310



4292449633



4278237362



4278235622

Sweetspot

The Sweet Spot groups the original color and five complimentary colors.



4293756310



4294958819



4292642285



4286606190



4278190080



4286611584

Same Dimension

The Same Dimension uses a secret algorithm to generate beautiful new colors.



4293756310



4294932622



4293765253



4285885035



4290052126



4281729033

Inverse Universe

The Inverse Universe completely reimagines the original color for something new.



4293756310



4294932622



4286958317



4285885035



4290052126



4281729033

Previews

White Background



This preview shows how the Android color 4293756310 looks on a white background.

Color Contrast Check

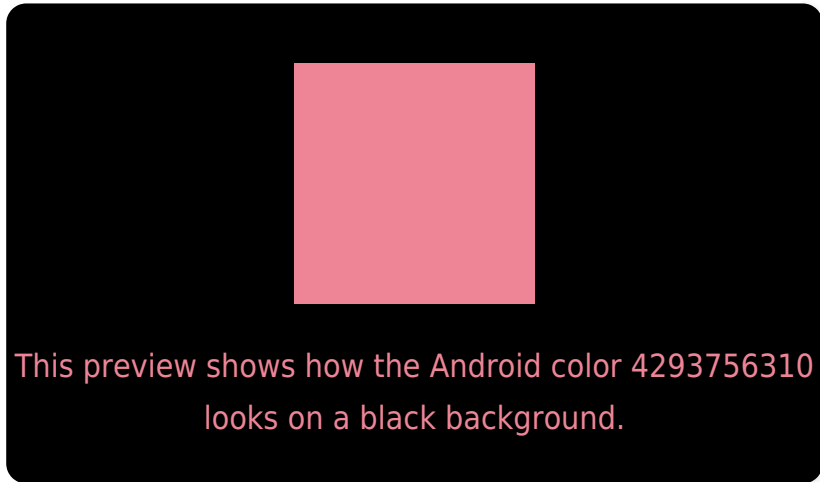
Large Text (above 18pt) WCAG AA × Fail

Any Text WCAG AA × Fail

Large Text (above 18pt) WCAG AAA × Fail

Any Text WCAG AAA × Fail

Black Background



Color Contrast Check

Large Text (above 18pt) WCAG AA ✓ Pass

Any Text WCAG AA ✓ Pass

Large Text (above 18pt) WCAG AAA ✓ Pass

Any Text WCAG AAA ✓ Pass

If you want to check with other color combinations, try the [Color Contrast Checker](#).

Android 4293756310 Background



This preview shows how black text looks on a background with the Android color 4293756310.




This preview shows how white text looks on a background with the Android color 4293756310.

Color Blindness Simulation

Color vision deficiency is a very complex topic, and I could not describe the different causes any better than Wikipedia does, so if you want to learn more, you should check out their [article about color blindness](#).

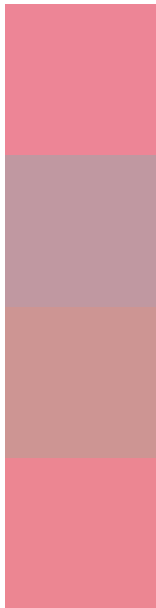
Dichromacy





Tritanopia
4293691024

Trichromacy



Original Color
4293756310

Protanomaly
4290812065

Deuteranomaly
4291663251

Tritanomaly
4293691026

Monochromacy



Original Color
4293756310

Achromatopsia
4289111718

Achromatomaly
4290812576

CSS Examples

Text

The CSS property to change the color of the text to Android 4293756310 is called "color". The color property can be set on classes, ids or directly on the HTML element.

This example shows how text in the color `rgb(237, 133, 150)` looks like.

```
.text, #text, p{  
    color:rgb(237, 133, 150)  
}
```

If you want to add a text shadow in that color use the text-shadow property, you can generate a text shadow directly with our [CSS Text Shadow Generator](#).

Here you see how black text with a 4 pixel rgb(237, 133, 150) colored shadow looks like.

```
.shadow{ text-shadow: 4px 4px 2px rgb(237, 133, 150) }
```

Border

The CSS property to change the border of an element to Android 4293756310 is called "border". The border property can be set on classes, ids or directly on the HTML element.

This example shows the color as border, it can be applied via the CSS property "border" or "border-color".

```
.border, #border, table{ border:4px solid rgb(237, 133, 150) }
```

If only the border color should be changed use the property `border-color`.

```
.border{ border-color:rgb(237, 133, 150) }
```

If you want to add a box shadow in that color use:

Here you see how a box with a 4 pixel `rgb(237, 133, 150)` colored shadow looks like.

```
.boxshadow{ -moz-box-shadow:4px 4px 4px  
4px rgb(237, 133, 150); -webkit-box-  
shadow:4px 4px 4px 4px rgb(237, 133, 150);  
box-shadow:4px 4px 4px 4px rgb(237, 133,  
150) }
```

Background

The CSS property to change the background color of an element to Android 4293756310 is called "background". The background property can be set on classes, ids or directly on the HTML element.

```
.background, #background, body{  
background: rgb(237, 133, 150) }
```

If only the background color should be changed can be used:

```
.background{ background-color: rgb(237,  
133, 150) }
```

This example shows the color as background, it is applied via the CSS property "background".

To optimize and compress your CSS code, you can use our [online CSS compressor and optimizer](#) based on csstidy. If you want to create a linear or radial gradient as background or border, check our [CSS Gradient Generator](#).

Hey! You found this booklet interesting? Support Converting Colors with the new Membership Option!

The pro membership hides all ads, plus gives you double the colors in the color bucket, and more awesome pro features!

[Learn more, Memberships starting at \\$2.50/m!](#)

**Follow me
on Twitter!**

@ConvertingColor